

**ALL THE ADVANTAGES OF CONCRETE PAVING WITHOUT ADDED COSTS**

PAVING STONES can be used commercially or for residential purposes such as patios, driveways, walkways and pool sides and can withstand extreme temperatures and heavy traffic! Unlike asphalt or poured concrete, frost or severe temperature changes leave them unaffected.

**NATIONAL BLOCK CO.**  
 39000 FORD ROAD  
 JUST EAST OF I-275  
 WESTLAND, MI 48185  
 (313) 721-4056

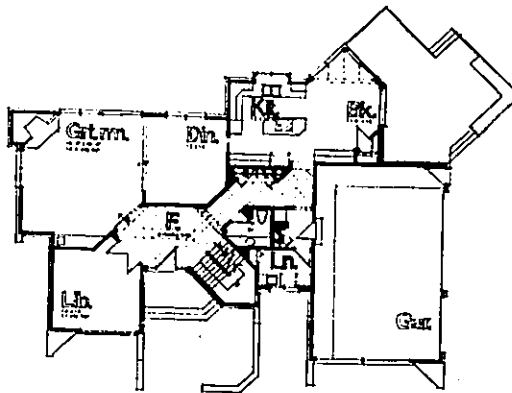
Mon.-Fri. 7:00 A.M.-5 P.M., SAT. 8:00-12 NOON

• DO-IT-YOURSELF •  
 • TOOL RENTALS AVAILABLE •

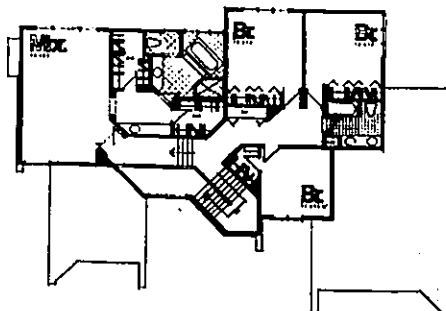


**The Bradley**

Unusual with its octagonal design, the Bradley is a 4-bedroom, 3,250-square-foot contemporary with brick and cedar wood siding. Other features include an island cooktop in kitchen, greenhouse windows in triangle-shaped nook which opens to a patio. The master bedroom has a cathedral ceiling and two walk-in closets. The master bath has a glass-enclosed, two-person shower, whirlpool, dressing area with vanity. The library features a wall of windows. Step-down great room includes dining room area, six-foot windows, mirrored marble fireplace, wet bar and wine rack. Price range is \$375,000-425,000. Interior design by Nancy Feldman.



First Level Floor Plan



Second Level Floor Plan

**THE BOLD LOOK OF KOHLER**

OPEN  
 Tues.-Fri.  
 10:00-5:30  
 Sat. 9:30-4:00

**BATH MAGIC**

SALES CENTER & SHOWROOM

547-5252

11 MILE  
 LINCOLN  
 332 B  
 1/2 10 MILE

333 E. Lincoln  
 (10 1/2 Mile E. of Main)  
 Royal Oak, MI  
 48062