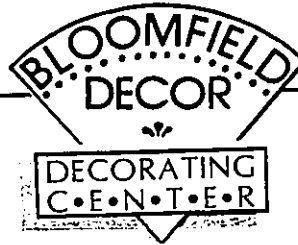
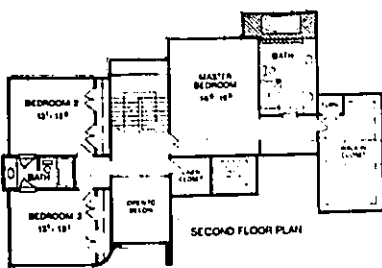
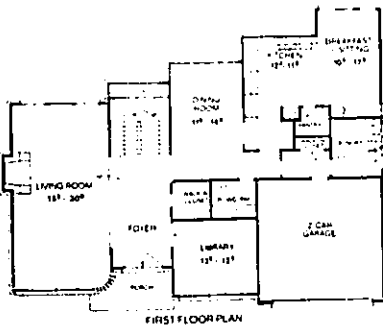


The Looking Glass

With its rough sawn cedar, brick exterior, the four-bedroom Looking Glass model features an extensive use of butt glazing and glass block throughout. A 10-foot entrance door with glass panels lead to a foyer with wood and marble flooring. An open stairway leads to a dramatic glass block bridge. The island kitchen, with oak flooring, has a large pantry, European appliances, and a 10-foot ceiling to continue a feeling of airiness. That same open feeling dominates in the spacious master suite, featuring cathedral ceiling, eight-foot double doors, built-in dress and two-person whirlpool. Impressive architectural columns in the dining room create an elegant look. Approximately 4,700 square feet, the model is priced at \$375,000-\$425,000. Interior design by Ellen Letourneau.



4185 Orchard Lk. Rd.
S. of Pontiac Trail
in Wilkins Corners
626-0609

Mon., Fri. 8:30-7:30
Tues., Wed., Thurs. 8:30-5:30
Sat. 9-5
AN EXCLUSIVE
BENJAMIN MOORE
DEALER

**Best Wallpaper Library in the Area
including 1100 designer collections!**



**HUNDREDS OF STYLES & COLORS
TO CHOOSE FROM**

Top of the line carpets
Including Stainmaster DuPont



We Sell The Best!



See our decorating at Home #2 "The Looking Glass"



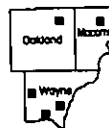
SHOWCASE OF HOMES

Single Family Homes and Condominiums



- **CANTON TOWNSHIP**
Sunflower Village VI
Ranches & Colonials
\$109,990 - \$128,990
455-6230
- **RIVERVIEW**
Crown Pointe of Riverview
Luxury Condominiums
from \$102,990
282-2456
- **ROCHESTER HILLS**
Wildflower
Ranches & Colonials
from \$129,990 - \$144,990
852-2405
- **STERLING HEIGHTS**
Carrage Park at Lakeside
Luxury Condominiums
from \$90,990
855-4636 (Main Office)
- **WOODHAVEN**
Woodhall Forest II
Ranches, Colonials &
Story and a half
\$93,990 - \$99,990
675-5670

All Models
Open Daily
12:30 - 6:00
Closed Thursday



Sales by
Barton Richards

Phone 855-4636