

CHIC! brings rich colors, fabrics



DUANE BURLESON

A five-color leather, alligator embossed handbag, \$235. Green suede, shaped heel pump by Petra, \$145. Purple suede, spiral sculpted heel by Petra, \$145. Heavy gold Chanel chain with dog tag, \$190. Jacobson's.

HERE'S how Fall Chic shapes up from the fashion retailer's point of view.

At Sak's Fifth Avenue, Troy store fashion coordinator Cheryl Hall predicts:

"It's going to be a rich fall — rich colors, rich fabrics, rich looks. Imperial purple, Oriental spices and East Indian gemstone colors will flatter the finest of fabrics. Tapestry prints, passementerie, embroidery, soutache and other such trappings of royalty will adorn the collars, cuffs and shoulders of the season's elite, but, for the most part, with a spare, subdued style as in a little goes a long way."

"Proportions are princely," she continues, "short over long or long over short. Evening is elegance in princess taffeta ballgowns with sequins and beading at one end of the spectrum and British "dandies" in perfectly tailored, ascot evening suits at the other end. There are also queenly columns in velvet and wool crepe for more understated yet equally impressive entrances and exits."

Karen Bohnhoff, vice president for trend directions at Hultson's, adds a business outlook.

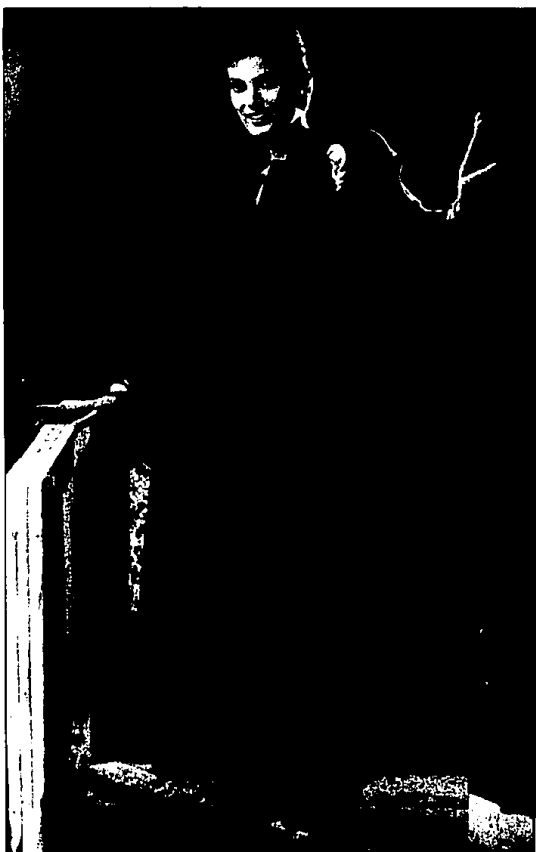
"The strongest trend for fall is color for both men and women. Key colors are red, purple, and emerald green."

"Suited looks for women are most important, with long or short, shaped jackets. Skirt lengths hover around the knee or slide down to mid-calf, depending on the appropriateness and the work environment. Pant suits emerge as



RANDY BORST

A red wool cape (left) covers a purple wool gabardine capelet dress by Chella B. Cape, \$220; dress, \$230. Jacobson's. A royal wool topper coat swings over black suede pull-on pants and turtle neck sweater with a challis Perry Ellis scarf, \$62. Topper, \$255; pant, \$140; sweater, \$54. Lord & Taylor.



RANDY BORST

Becky Bisoulla uses amethyst wool jersey for a fitted dress with matching cape and then sparks it with chartreuse gloves. Dress, \$630; cape, \$420; gloves, \$18. Roz & Sperm, Bloomfield Plaza, Birmingham



RANDY BORST

Leather comes to life combined with a red wool turtleneck sweater. Jacket, \$630; pants, \$318; sweater, \$130. Ray & Ida, Applegate Square, Southfield.