

exhibitions

DETROIT INSTITUTE OF ART

Tuesday, Nov. 15 — "Andrew Wyeth: The Helga Pictures," is the last stop for this highly publicized exhibit before it goes to Paris. Will continue through Sunday, Jan. 22. Open during regular museum hours, 9:30 a.m. to 5:30 p.m. Tuesday-Sunday. Closed holidays. Admission charge, \$200 Woodward, Detroit.

HABATAT GALLERIES

Saturday, Nov. 12 — Recent sculptures by KeKe Cribbs and Michael Cohn and "Scale/Detail," an exhibition exploring the nobility of demure and down-scaled objects, continue through November. Opening reception to meet the artists at 8 p.m. Saturday, 12125 Southfield, Lathrup Village.

CRANBROOK ACADEMY OF ART MUSEUM

Sunday, Nov. 13 — "Saarinen in Finland," continues through Jan. 8. This exhibit, organized by the Museum of Finnish Architecture, Helsinki, contains drawings, furniture and photographs of Saarinen's work in Finland and Europe, 1899-1921. Also on exhibit are recent acquisitions, "Cranbrook/Mexico: Face to Face" and recent work by current artists-in-residence. Hours are 1-5 p.m. Tuesday-Sunday, 600 Lone Pine, Bloomfield Hills.

RUBINER GALLERY

Wednesday, Nov. 16 — Paintings, watercolors and drawings by Richard Jerzy continue on display through Dec. 14. Reception 7-9 p.m. Wednesday. Hours are 11 a.m. to 6 p.m. Tuesday-Saturday and until 8 p.m. Wednesday, 7001 Orchard Lake, West Bloomfield.

JOY EMERY GALLERY

"Art of Design: Objects by 19th and 20th Century Artists" continues through the year. Hours are 11 a.m. to 6 p.m. Tuesday-Saturday, until 8 p.m. Thursday, 131 Kercheval, Grosse Pointe Farms.

PARK WEST GALLERY

Paintings by Andras Markos are on display through November. Markos, born in Romania in 1950, has received many awards in Europe and South America, 29469 Northwestern, Southfield.

DONALD MORRIS GALLERY

Paintings by Louise Matthiasdottir, born and raised in Iceland, are on display through Nov. 26. This is her first one-per-

son showing at this gallery. Hours are 10:30 a.m. to 5:30 p.m. Tuesday-Saturday, 105 Townsend, Birmingham.

MUCCIOLI STUDIO GALLERY

Winter show includes works by Thelma Abel, Esther Bryant, Jay Holland, Pat Lichty, Larry Lumetta, Nancy Propp, Nelson Singer, Donald Stiles, Janina Wayonjer, Benni White and Edgar Yeager. Hours are 11 a.m. to 6 p.m. Tuesday-Saturday, 511 Beaubien, Detroit.

BIRMINGHAM COMMUNITY HOUSE

Paintings by M. Stirling Allardice of Grosse Pointe and photographs by Joe Clark, 62, of Farmington. Open during regular hours. Art works are hung throughout the Community House, 380 S. Bates, Birmingham.

OAKLAND COUNTY GALLERY

"Animals in Art II" features work by contemporary artists and that loaned by collectors. Cats dominate, but kangaroos, otters, cows and steers are in the show, along with small sculptures by Craig Hinshaw of all kinds of animals. Continues through Dec. 15. Hours are 8:30 a.m. to 5 p.m. Monday-Friday, Executive Office Building, Oakland County complex, 1200 North Telegraph, Pontiac.

ARIANA GALLERY

Carolyn A. Johnson and John C. Diem Jewelry. Using traditional techniques and materials, Johnson and Diem create a contemporary artistic statement for the discriminating collector of wearable art forms. Show continues through Dec. 5. Monday through Saturday, 10-5 p.m.; Thursday, 10-8:30 p.m. 386 E. Maple, Birmingham.

SHELDON ROSS GALLERY

Claire Moore (1917-88) The Last Years 1985-88 Acrylics on Paper. Show continues through Nov. 26. 250 Martin, Birmingham.

SARKIS GALLERIES

Koutroulis; Linburg; Steiner. Sabbatical leave exhibition. Sarkis Galleries is affiliated with the Center for Creative Studies, College of Art and Design, 245 E. Kirby, Detroit.

Christmas Walk set

Northville's charming historical Mill Race Village — dressed up in holiday finery — will be open to visitors two weekends this month as part of a "Christmas Walk."

Dates are Saturday and Sunday, Nov. 19-20, and the following weekend, Nov. 26-27. Hours are from 11 a.m. to 5 p.m. Saturdays and noon to 5 p.m. Sundays. Adult donation is \$5, each accompanied child \$3, and families (two adults and children) \$15. Tickets may be purchased at the gate or in some downtown businesses. For more information, call the Northville Historical Society office, 348-1845, Monday through Friday, 9 a.m. to 1 p.m.

Go for it!

Be an Observer & Eccentric Newspaper carrier. Call 691-0500 for details

OPEN OPEN OPEN OPEN
SPEND THE HOLIDAYS
IN YOUR NEW
EISTER CUSTOM HOME!
 You may have seen our lovely models in Suttonburg Station. You may be one of the many people who were impressed by our quality & gorgeous wood detailing. Now you could be the one to receive our \$10,000 off season discount.
 Now \$123,900 - \$154,900
 Directions: 9 Mile Rd., 1/4 mi. E. of US-23
CALL BEA JOHNSTON
THE MICHIGAN GROUP
 (313) 477-0711 (313) 449-7377
 Models open 3-6 Tues., Wed., Thurs.; 12-4 Sunday
 Call for more information
OPEN OPEN OPEN OPEN

more than just the scores

ROLLING OAKS WEST FARMINGTON HILLS

Magnificent new home features large sun room, two luxury/living areas and double ovens and Jenn-Aire cooktop. Exquisite master suite and three bedrooms located on upper level. Lot #15. \$274,900.

Fabulous new home features great room, wet bar, library with French door entrance, kitchen with walk-in pantry, a beautiful master bedroom suite plus three bedrooms, 2 1/2 baths. Lot #21. \$265,900.

Dramatic new home with French entry doors leading to foyer and great room. Generous use of windows bring a southern exposure to all living areas. Cabinets galore and double oven highlight kitchen. First floor master suite contains two walk-in closets and attached bath. Three bedrooms upstairs include double closets each. Lot #45. \$284,900.

Extraordinary new home with open floor plan features great room with cathedral ceiling, fireplace, library, ceramic floors in foyer, large kitchen, first floor master bedroom suite with whirlpool tub, three large bedrooms upstairs, skylight and abundance of windows. Alarm system installed and fully landscaped. Lot #47. \$283,500.

For further information, please visit our model homes located off of Drake Road, 1/4 mile south of Fourteen Mile. Open daily 1-6 p.m., closed Thursday.

Carol Wieland
661-6886 or 661-6321
 Sales Model Residence
RELIANT REALTY
 Associates, Inc.

Merrill Lynch Realty



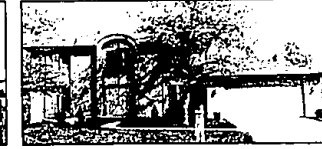
OPEN SUN. 2-5, 27200 Scenic Highway, S. of 14 Mile, E. of Inlander. FRANKLIN RANCH is updated yet retains its original, historic charm with oak and maple floors, library, gourmet kitchen, great room, fireplace, built-ins and many more amenities. \$364,000 626-9100 2-B-1492



OPEN SUN. 2-5, 38987 Turtle Creek, W. of Drake, S. of 14 Mile. LOVELY FARMINGTON HILLS Colonial Contemporary is situated on treed lot and features 5 bedrooms, 3 1/2 baths, cathedral ceilings, viewing gallery, jacuzzi, family room, central air, deck and many extras. \$299,900 626-9100 2-B-1166



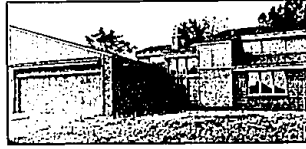
OPEN SAT. & SUN. 2-5, 39340 Heatherbrook, N. of 12 Mile, E. of Haggerty. Amenities abound in this FARMINGTON HILLS Colonial with neutral decor, crown moldings, family room, fireplace, bay windows, central air, deck, full walkout basement and more. \$239,900 626-9100 2-B-1561



OPEN SUN. 2-5, 38050 Eric Ct., N. of 9 Mile, W. of Halstead. SPACIOUS FARMINGTON HILLS Colonial offers family room, library, fireplace, full basement, 4 bedrooms, 2 1/2 baths, central air, patio and quiet setting. \$239,900 626-9100 2-B-1734



OPEN SUN. 2-5, 35687 Cats Ct., N. of 9 Mile, E. of Halstead. PRIME FARMINGTON HILLS location! Beautifully maintained Colonial offers family room, fireplace, 3 bedrooms, 2 1/2 baths, sunken tub, central air, deck and 3 car attached garage. \$219,900 626-9100 2-B-1760



OPEN SAT. 2-5, 36721 Tanglewood Ln., S. side of 14 Mile between Drake & Halstead. Contemporary Townhouse features 3 bedrooms, 2 1/2 baths, great room, formal dining, library, fireplace, skylights and loft. \$204,900 478-5000 7-B-0419



OPEN SUN. 2-5, 5823 Glen Eagles, N. of Walnut Lk., E. of Drake. WEST BLOOMFIELD. Enjoy the hilltop setting, wooded lot and golf course view from this 4 bedroom Colonial with neutral decor, family room, rec room and 2 1/2 baths. \$199,900 478-5000 7-B-1452



OPEN SUN. 2-5, 25407 Westmoreland, S. of 11 Mile, E. of Orchard Lake. Surrounded by two ponds and nature setting, this custom Ranch is gorgeous with open courtyard, great room with fireplace, 4 bedrooms, deck and 3 car garage. \$169,500 626-9100 2-B-1382



OPEN SUN. 1-4, 24384 Knollwood, N. of 10 Mile, E. of Meadowbrook. Exceptionally well maintained and extensively updated, this NOVI Ranch offers rec room with wet bar and entertainment center, family room with fireplace, 3 bedrooms, central air and patio. \$119,900 478-5000 7-B-1825



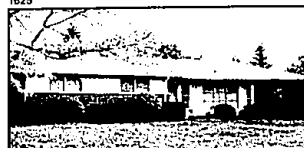
OPEN SAT. 1-4, 21773 Farmington Rd., S. of 9 Mile. Newly painted and carpeted, this FARMINGTON HILLS Ranch features neutral decor, family room, fireplace, 3 bedrooms, 2 baths, full basement, large kitchen and excellent location and neighborhood. \$119,900 626-9100 7-B-1700



OPEN SUN. 1-4, 24344 Hampton Hill, N. of 10 Mile, W. of Meadowbrook. Tastefully decorated Colonial in NOVI offers neutral decor, family room with fireplace, hardwood floors, finished basement, 3 bedrooms, patio and fenced yard. \$115,900 478-5000 7-B-1789



OPEN SUN. 2-5, 29779 Aberdeen, N. of 12 Mile, E. of Pierson. Walk to schools from this charming 4 bedroom Colonial in SOUTHFIELD. Family room with fireplace, 2 1/2 baths, central air, patio and quiet setting. \$32,900 648-6000 1-A-1720



OPEN SUN. 1-4, 24384 Knollwood, N. of 10 Mile, E. of Meadowbrook. Exceptionally well maintained and extensively updated, this NOVI Ranch offers rec room with wet bar and entertainment center, family room with fireplace, 3 bedrooms, central air and patio. \$119,900 478-5000 7-B-1825



OPEN SUN. 1-4, 33947 Kirby, N. of 8 Mile, W. of Farmington. Move right in to this attractive 3 bedroom FARMINGTON HILLS Ranch with 2 full baths, great room, neutral decor, newer carpeting and multi-level decking. Large wooded lot. \$84,900 478-5000 7-B-1512



OPEN SUN. 2-5, 14451 Rosemary, S. of 10 Mile, E. of Greenfield. Lovely brick Ranch in Oak Park has 3 bedrooms, 1 1/2 baths, family room, central air, finished basement, generous storage areas, updates and is beautifully maintained. \$53,500 626-9100 2-A-1617



OPEN SUN. 2-5, 29530 Meadowlane, N. of 12 Mile, E. of Lahser. Spacious and beautifully maintained, this SOUTHFIELD Colonial offers 4 bedrooms, 2 1/2 baths, library, family room, fireplace, central air, patio and prestigious sub. \$118,000 626-9100 2-A-1838



OPEN SUN. 2-5, 34841 Valley Forge, N. of 12 Mile, W. of Farmington Rd. Four bedroom FARMINGTON HILLS Colonial has a wonderful contemporary flair and offers great room, raised hearth fireplace, library, bay windows, 4 bedrooms and 2 1/2 baths. \$169,900 626-9100 2-B-1751



OPEN SUN. 2-5, 4200 Woodlands Ln., S. of Pontiac Trail, W. of Orchard Lake. This sensational Orchard Lake Tudor has all the amenities with cathedral ceiling, wet bar, neutral decor, library, two story fireplace, central air and more! \$325,000 626-9100 2-B-1800



JEN SAT. & SUN. 2-5, 31266 Schoolcraft, E. of Merriman on N. side of Schoolcraft. LIVONIA Ranch offers 3 bedrooms, neutral decor, 1 1/2 baths, formal dining, remodeled kitchen, hardwood floors, central air, patio, deck and pool. Many extras. \$94,900 478-5000 7-C-1500



OPEN SUN. 2-5, 539 N. Woodward, W. side of Woodward, S. of Oak. Absolutely charming condo in mint condition offers excellent location, hardwood floors, Euro-style kitchen, stained glass, 2 bedrooms, one bath, formal dining room and private basement. \$118,900 648-6000 1-A-1849

Merrill Lynch Realty

BIRMINGHAM/BLOOMFIELD
 1520 N. Woodward
 (at Long Lake)
646-6000

FRANKLIN/FARMINGTON
 31000 Northwestern Hwy.
 (at 13 mile)
626-9100

TROY
 3150 Livernois
 (at Big Beaver)
689-8900

ROCHESTER
 1460 Walton Blvd.
 (at Livernois)
651-8850

WEST BLOOMFIELD
 4316 Orchard Lake
 (at Lone Pine)
851-8100

NOVI/NORTHVILLE
 37000 Grand River
 (at Halstead)
478-5000



OPEN MONDAY-FRIDAY 9 a.m.-9 p.m. SATURDAY 9 a.m.-9 p.m. OPEN SUNDAYS