



RANDY BORST/Staff photographer

Tree time

Richard Paresky and son Chris, 11, check out a Christmas tree Monday afternoon at A&W Trees, on Grand River near Nine Mile, while son Richard, 14, holds the tree up for a closer look.

The Farmington Hills family traditionally waits until the week of Christmas to buy the tree that Santa will see.

Hills to use \$500,000 for new fire station

Farmington Hills will use its more than \$500,000 special census payment for a new fire station. Interest earnings on the census money will pay for another dispatcher for the police department.

The city received the \$588,000 Aug. 16 after months of lobbying by the governor's office. Farmington Hills is the largest of 38 communities that received checks totaling \$3.7 million in supplemental state shared revenues for documenting population increases of more than 15 percent since the 1980 general census count.

The city is eligible for a total of \$1.3 million through the end of the decade as the result of showing a 17.2

percent population increase since 1980. A second check is expected in September 1989.

The city already has spent about \$175,000 for land at Nine Mile and Drake, where a new fire station will be built. The station will replace Station No. 1 on Industrial Drive, which will be closed. The planned Nine Mile-Drake station is expected to more efficiently serve southwest Farmington Hills.

After city officials received the special census check, they invested it and have since earned about \$20,000. The interest earnings will be used to hire another police/fire dispatcher, prompted by the city's continuing growth. The cost of a dispatcher, including wages, fringe benefits and uniforms, is about \$14,000.

City contractor reducing role

By Casey Hans
staff writer

The contractor who coordinated the first phase of the downtown Farmington streetscape project will not coordinate the second phase, forcing the Downtown Development Authority to go out for bids.

Managers at Concord Cement, the general contractor for the first phase of the \$1.4 million project, said coordinating the entire project was too time-consuming, according to Farmington city planner Christopher Waczny.

"As a consequence, they have decided not to continue as general contractor," he said. "They had made a commitment to continue with the second phase."

Waczny said Concord would bid the remainder of the project as a subcontractor.

The DDA will go out to bid in January for the second phase, estimated to cost about \$125,000, with plans to award the bid in February. If bids are too high, the second phase could be delayed and combined with the project's third phase, said city manager Robert Deadman.

THE SECOND phase — much smaller than the first — will include sidewalks, pedestrian lampposts and trees along Farmington Road from Grand River south to the end of the

DDA district. The original plan called for improvements only to Alta Loma and Orchard streets, but the revised plan will carry them further south to the end of the business district.

"It's largely a public relations issue," explained DDA director Wendy Strip Sittsamer. "It seemed illogical to stop mid-block."

Concord Cement still has to repair or complete portions of the project's first phase. According to DDA members, there are some cracked concrete slabs and painted tree guards will be redone. Some money has been retained on the contract and will not be paid until after the work is complete.

The second phase is expected to coordinate with planned work by National Bank of Detroit, which is doing renovation work and plans to add planters near the city right of way. Planner Waczny feels the DDA work will blend well with the NBD project, but as of Tuesday, he hadn't talked with bank officials.

"All in all, I think we're coming up with pretty good work," said Waczny about the project's first phase. "Other contractors are commenting on it."

Waczny is expected to have design, engineering and final cost estimates at the DDA meeting Tuesday, Jan. 3.

Amy's Crafts

Specials Good thru December 24th

60% OFF CHRISTMAS MERCHANDISE
Including trees, trims, green wreaths, decorations, stitchery kits, ribbon, unfinished & finished wood, finished & unfinished resin.
(DOES NOT INCLUDE WILTON SUPPLIES)

33% OFF
All Wilton Christmas Items
(Canton Store Only)

70% OFF
All Jointed Figure Candles
These would be cute to add to country packages or as a decorative favor.

50% OFF
All Silk Flowers, Plants & Bushes
Great Christmas Gift Idea

Many other in-store specials

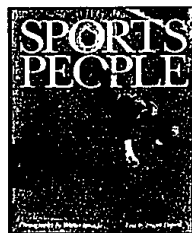
Amy's Crafts

Farmington Hills
38503 W. Ten Mile Rd.
East of Haggerty in Freeway Plaza
478-4455

Canton
42011 Ford Rd.
West of I-275 in F&M Center
981-9244

Hours: M-F, 10-6; Sat. 10-6; Sun. 12-5

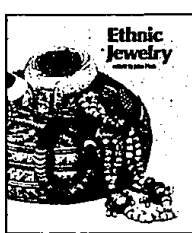
SOMETHING SPECIAL FOR EVERYONE ON YOUR LIST



\$35.00



\$39.95



\$40.00



\$40.00



\$95.00



\$65.00



\$49.50



\$67.50

bookpeople

Orchard Mall
Mon.-Fri.: 10-9
Sat.: 10-6 Sun.: 12-5

851-9150



Earn high CD yields at PaineWebber.

8.40%
3 month CD rate

PLUS A CASH REBATE.

Buy your CDs at PaineWebber and in addition to high, competitive rates you'll receive a cash rebate *up front*. On a 3-month CD the rebate is \$1.50 for every thousand dollars invested. So with a \$20,000 investment your bonus is \$30.00.

And there's another PaineWebber advantage. All our CDs are FDIC or FSLIC insured—up to \$100,000 per issuer. ** So you get full insurance on a CD portfolio worth more than \$100,000—and you'll have a full accounting of all your CDs on one convenient monthly statement.

So why have ordinary CDs when you can have a diversified and managed CD portfolio at PaineWebber? And a cash bonus. Contact PaineWebber today because this bonus rebate offer ends December 31.

Insured by FSLIC or FDIC up to \$100,000

Call Thomas G. Marzonie at (313) 851-1001.

Thank you PaineWebber

32300 Northwestern Highway, Farmington Hills, MI 48018
Member SIPC

*Annual rate of simple interest. Rate effective as of 11/29/88. Subject to availability. We reserve the right to limit purchases to \$100,000 per client per issuer. **All CDs purchased through PaineWebber are insured up to \$100,000 per client per depository institution. If the issuing depository institution permits early withdrawal, Federal regulations require a substantial penalty.