

exhibitions

● BELIAN ART CENTER
 Thursday, May 25 — Paintings, sculpture and graphics by Victor Vasarely are on display through June. Reception 6-9 p.m. Thursday. Hours are noon to 6 p.m. Monday-Saturday, 5930 Rochester Road, Troy.

● JUSTIN PARISH
 Friday, May 26 — High bas relief, mixed media art works by Kurt Joachim Coleman are on display in this beauty salon through June 22. She exhibited her master's at Cranbrook Academy of Art last year and has completed in this area at Cranbrook, Detroit Artists Market and the Front Room Gallery of Detroit Council for the Arts. Reception 5-8:30 p.m. Friday. Hours are 9 a.m. to 5:30 p.m. Tuesday, Wednesday and Saturday, until 8:30 p.m. Thursday and until 6:30 p.m. Friday, 228 W. Maple, Birmingham.

● MCA GALLERY
 Friday, May 26 — This is one of 12 sites of the "Urbanology" exhibit which continues here through Sept. 15. Works by 13 well-known area artists including Joe Weener of Birmingham are on display here. Reception for the artists 4-6 p.m. Friday, 1200 Sixth Street, Detroit.

● BIRMINGHAM BLOOMFIELD ART ASSOCIATION
 Saturday, May 27 — "Spring into Color," an exhibition by Michigan Silverminthe Guild continues through June 17. Opening is 2-5 p.m. Saturday. Hours are 9:30 a.m. to 4:30 p.m. Monday-Saturday, 1516 S. Cranbrook, Birmingham.

● DETROIT ARTISTS MARKET
 Tuesday, May 30 — "Urbanology:

Social Engagements" features works by seven artists including Bruce Thayer of Lakeside Village and Raymond Katz of Pontiac. Their works will depict current problems in this society. In the Upper Gallery is a photography display from the Urban Center for Photography, "Woodward Avenue: Past, Present/Future Insights." Reception noon to 8 p.m. Saturday, June 3. Continues through June 23. Hours are 11 a.m. to 6 p.m. Tuesday-Saturday, 1452 Randolph, Detroit.

● FOUR WINDS GALLERY
 "Blackware Pottery" continues through June 8. This is a large selection of Santa Clara and San Rafael pottery featuring rare examples by Maria Martinez and Margaret Tafoya. Also displayed are gravures by Edward S. Curtis, photographer. Hours are 10 a.m. to 5:30 p.m. Monday-Saturday, until 8 p.m. Thursday, 340 E. Maple, Birmingham.

● COUNTY GALLERIA
 Larger-than-life oil paintings of carousel horses by Jon McDonald of Grand Rapids, and a show of paintings by David Pickett, Janet Storm and Betty Skyvelder under the title, "Strong Color — Strong Painters." The gallery areas in the Executive Office Building are open during regular business hours Monday-Friday, 1200 N. Telegraph, Pontiac.

● BLOOMFIELD TOWNSHIP LIBRARY
 "Calligraphic Images" by members of the Michigan Association of Calligraphers continues through June 9. On view during regular library hours, 1059 Lone Pine at Telegraph, Bloomfield Township.

● 16 HANDS
 "Artful Gardens," a collection of

functional and decorative arts for the outdoors will continue through June. It includes bells and gong, kinetic sculpture, carved stone lanterns and water basins, birchhouses and brass and glass outdoor lighting fixtures. Hours are 11 a.m. to 6 p.m. Monday-Friday, 10 a.m. to 6 p.m. Saturday and 8:30-10 p.m. Friday, 119 West Washington, Ann Arbor.

● HABATAT GALLERIES
 Glass sculpture by Kreg Kallenberger, John Lewis and Paul Standard is on display through June 10. Lewis also makes cast glass furniture. The gallery is at 3225 Northwestern, Farmington Hills.

● ARIANA GALLERY
 "Changing Views," an exhibit of impressionist photographs by Caren Norderlander is currently on display. Gallery hours are 10 a.m. to 5 p.m. Monday-Saturday, until 7 p.m. Thursday, 385 E. Maple, Birmingham.

● PRINT GALLERY
 Movie posters from the Hollywood Movie Exchange will be on display through July 12. 22203 Northwestern, between 12 and 13 Mile roads, Southfield.

● PRESTON BURKE GALLERIES, INC.
 Works of acrylic enamel on fiberboard and steel/aluminum by Pam Castano are on display through June 16, 240 East Grand River, Detroit.

● DETROIT GALLERY OF CONTEMPORARY CRAFTS
 "Special Gifts for Special Occasions" continues through June 3. Hours are 11 a.m. to 5 p.m. Monday-Saturday, 301 Fisher Building, Detroit.

● XOCHIPILLI GALLERY
 New work by Claudio DelMonte will be on display through June 10. Hours are 11 a.m. to 5 p.m. Tuesday-Saturday, 568 N. Woodward, Birmingham.

● CCS-COLLEGE OF ART AND DESIGN
 Annual student exhibition continues through May 27. Hours are 10 a.m. to 4 p.m. Monday-Friday and 11 a.m. to 4 p.m. Saturday and Sunday, 245 E. Kirby, Detroit.

● DETROIT INSTITUTE OF ARTS
 "Pictures of People" features photos by Detroit-born Nicholas Nixon. The show is organized by the Museum of Modern Art. Open free of charge during regular museum hours, 9:30 a.m. to 5:30 p.m. Tuesday-Sunday, Albert and Peggy de Salle Gallery, of Photography, 3400 Woodward, Detroit.

● BIRMINGHAM BLOOMFIELD ART ASSOCIATION
 The works of the 69 finalists in the BBAA's High School Art Awards Competition are on display through June 10. Regular hours are 9 a.m. to 4:30 p.m. Monday-Saturday, 1516 S. Cranbrook, Birmingham.

● PARK WEST GALLERIES
 "Beyond Impression, the 1989 Collection," lithographs and etchings by Harold Altman, continues at the gallery through June 10. Hours are 10 a.m. to 6 p.m. Monday-Wednesday, until 9 p.m. Thursday and Friday and 11 a.m. to 6 p.m. Saturday and Sunday, 29469 Northwestern, Southfield.

● THE COMMUNITY CENTER
 Still lifes and landscape paintings by Martha Barnes, national award

winner, are on display through mid June. Open during regular Center hours, 9 a.m. to 7 p.m. Monday-Thursday, until 5 p.m. Friday and 9 a.m. to noon Saturday, 24705 Farmington Road, just north of 10 Mile, Farmington.

● DONNA JABOCS GALLERY
 There's still a large selection of ancient glass in the gallery along with Egyptian, Greek, Roman, Near-Eastern and Pre-Columbian antiquities. Hours are 11 a.m. to 5:30 p.m. Tuesday-Saturday, 574 N. Woodward, Birmingham.

● GALLERY ARTERIA
 "Return to Realism," paintings by Pat Mayhew, marks the first time in seven years that this well-known artist/teacher has shown this kind of work in the area. Continues through May 27, 112 Brownell, Birmingham.

● SUSANNE HILBERY GALLERY
 Works by Gordon Newton are on display through June 10. This is a two-gallery exhibition of the works of this well-known artist from Detroit. The other part is at Joy Emery Gallery, 151 Kercheval, Groves Pointe, Farms through May 27. Hilberry Gallery, 555 S. Woodward, Birmingham, is open from 11 a.m. to 5 p.m. Tuesday-Saturday.

● MESA ARTS
 "American Indian Jewelry," contemporary and traditional designs by leading American Indian artists, is a popular choice for this gallery specializing in arts from the American Southwest. Hours are 10 a.m. to 5 p.m. Tuesday-Friday, 11 a.m. to 4 p.m. Saturday, 32800 Franklin Road, Franklin.

● TROY ART GALLERY
 "Flowers Revisited" features works on this theme by Pat Boyer, Bertha Cohen, Charlotte Evans, Deek Knott, Carol Lachusa, Isabelle Owens and Susan Thomas. Hours are: 11 a.m. to 5:30 p.m. Tuesday-Friday until 4 p.m. Saturday, 755 W. Big Beaver, Suite 131, Troy.

● ROBERT KIDD GALLERY
 Sculpture by Susan Lyman and paintings by Adele Duck are on display through June 8. Hours are 10:30 a.m. to 5:30 p.m. Tuesday-Saturday, 107 Townsend, Birmingham.

● FEIGENSON/PRESTON GALLERY
 All-steel sculpture by Robert Sotok will be on display through June 3. Regular hours are 11 a.m. to 5 p.m. Tuesday-Saturday, 796 N. Woodward, Birmingham.

● HOMESTEAD GALLERY
 "Mood Dances," figurative works by Jamie Bakka, on display through May 28. Regular hours are 11 a.m. to 5 p.m. Tuesday-Sunday, until 9 p.m. Thursday, 136 S. Pontiac Trail.

● OAK PARK LIBRARY
 Recent works by Sarah Hartman, ceramic sculpture and Judicia, are on display through May 27. Open during regular library hours, 14200 Oak Park Blvd., Oak Park.

● BIRMINGHAM UNITARIAN CHURCH
 Watercolors and prints by Vera Wolfe will be on display through June 11. Wolfe has outstanding credentials in the art field, including a master's in printmaking from Wayne State. She is a staff aide in the Allian art department at the Detroit Institute of Arts. Open Sunday afternoons, Woodward at Lone Pine, Bloomfield Hills.

Merrill Lynch Realty

CONSIDERING REAL ESTATE AS A CAREER?

JOIN US FOR OUR WEEKLY OPEN HOUSE CAREER NIGHT AT OUR NOVI/ NORTHVILLE OFFICE.
 Every Thursday 7 PM - 9 PM 37000 Grand River Road at Halstead, Suite 120 478-5000 • Dave Jensen, Manager



STUNNING contemporary overlooking 11th green of O.L.C.C. This elegant home is breathtaking, offering over 1 acre of private wooded setting with superior landscaping, beautiful 2 story atrium entrance, great room with fireplace, deck, central air and extra that satisfy any hearts desire. \$550,000 478-5000 07-B-2672



Nestled on over 3 fabulous FRANKLIN acres of rolling terrain off a private road, this is 10 Endless charm emmits from this home featuring a natural stone fireplace, hardwood floors, 2-story fireplace, master bedroom with jacuzzi, full basement, first floor laundry, deck and the list goes on and on! \$209,000 478-5000 07-B-2679



Located in FRANKLIN VILLAGE, this 2 bedroom home is absolutely charming with hardwood floors, formal dining room, fireplace, newer kitchen and bath. Beautiful serene setting with mature trees and the tranquil sound of a babbling brook. \$279,000 048-6000 01-A-2025



Gracious living in MILFORD on four acre wooded lot with pond. Beautiful Contemporary TUDOR offers cathedral ceilings in great room and master bedroom family room, 3 bedrooms, 2 1/2 baths, fireplace and porch. Newly constructed builders model. \$269,000 478-5000 07-B-0333



Vintage choice WEST BLOOMFIELD lakefront home reflects a beautiful farm country setting. Featuring 2 large bedrooms, 2 baths, dry rooms including an exquisite Florida room, living room with fireplace, spacious kitchen, super lake front and a nice finished room over garage. Wonderful views! \$225,000 626-9100 02-B-2717



Less than 1 year old! This NOVI home is a steal! Loads of features including a 2-story foyer, country kitchen, hardwood floors, 2-story fireplace, master bedroom with jacuzzi, full basement, first floor laundry, deck and the list goes on and on! \$209,000 478-5000 07-B-2679



Exquisite California Charm! Situated on a fantastic ravine lot, this 4 bedroom, 2 1/2 bath ranch features a stone fireplace, family room with custom-built bar with own entertainment center, extensive decking overlooking in-ground pool, recessed lighting, all appliances and ideal location. \$209,000 626-9100 02-B-2731



Dramatic contemporary Quad-level is perfect for family living. Located in FRANKLIN VILLAGE, this home boasts 4 bedrooms, 2 1/2 baths, rec room, first floor laundry, new wood deck and screened-in porch. Adding to this homes appeal are an updated kitchen and central air. \$160,000 626-9100 02-A-2728



Absolutely Immaculate! Spacious FARMINGTON HILLS home features 3 huge bedrooms with walk-in closets, family room with fireplace, dining room, nice kitchen in ornate formica and oak, central air, living room and neutral decor in soft tones. \$175,500 626-9100 02-B-2285



Immaculate and beautiful contemporary condo in West Bloomfield features 3 large bedrooms, 2 1/2 baths, stone fireplace, large closets, 1st floor laundry, 2 car garage, courtyard entrance, swimming pool and tennis courts. \$169,000 626-9100 02-B-2363



Unparalleled elegance best describes this spectacular unit! Featuring dramatic mirror work, 2 decks, numerous upgrades when the unit was built including 6 panel doors, tile fan, recessed lighting and so much more! 2 bedrooms, 2 1/2 baths, living room, dining room. \$149,000 851-8100 06-A-2687



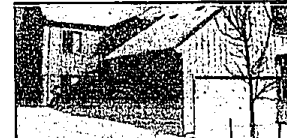
Enjoy country living in the city with this exceptional Colonial in FARMINGTON HILLS. This 4 bedroom, 2 1/2 bath home offers a large country kitchen, a doorman that leads to wonderful patio, first floor laundry, fireplace in great room and virtually maintenance free! \$134,000 626-9100 02-A-2711



DYNAMITE interior with beautiful decor highlight this 2 bedroom, 2 bath condo located in prestigious Oakcrest. A soaring beveled mirror enhances the fireplace and family room with cathedral ceiling. Large storage area, 2 car attached garage and balcony complete this wonderful package. \$131,000 626-9100 02-A-2703



Impassable brick ranch located on a beautiful lot with towering mature trees. Featuring a living room with stone raised hearth fireplace with glass doors, hardwood floors, newer furnace and living room with fireplace. Must see to appreciate. It's a real beauty! \$123,500 851-8100 06-B-2059



Two bedroom Condo in FARMINGTON HILLS features prime location, great room, formal dining room, fireplace, kitchen with snack bar, walk-in closet, central air and patio. Appliances included. \$119,800 626-9100 02-B-1932



This main floor condo unit is for adult living. Quiet and beautiful ground enhance this homes appeal. A doorman on-site large balcony is perfect for relaxing outdoors. Living room has newer carpeting. Large storage with workbench. \$89,800 626-9100 02-B-2600

Merrill Lynch Realty

BIRMINGHAM/BLOOMFIELD
 1520 N. Woodward
 (at Long Lake)
 646-6000

FRANKLIN/FARMINGTON
 11000 Northwestern Hwy.
 (at 13 Mile)
 626-9100

TROY
 3150 Valley
 (at Big Beaver)
 689-8900

ROCHESTER
 1100 Walton Blvd.
 (at 13 Mile)
 651-8850

WEST BLOOMFIELD
 11110 Orchard Lake
 (at Long Point)
 851-8100

NOVI/NORTHVILLE
 37000 Grand River
 (at Halstead)
 478-5000

OUR OPEN HOUSES ARE HELD EVERY THURSDAY FROM 7 PM TO 9 PM