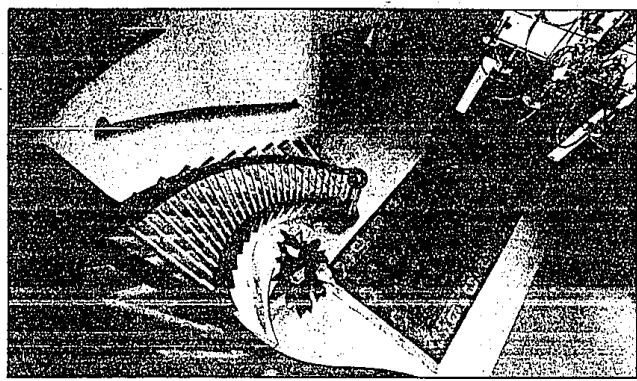
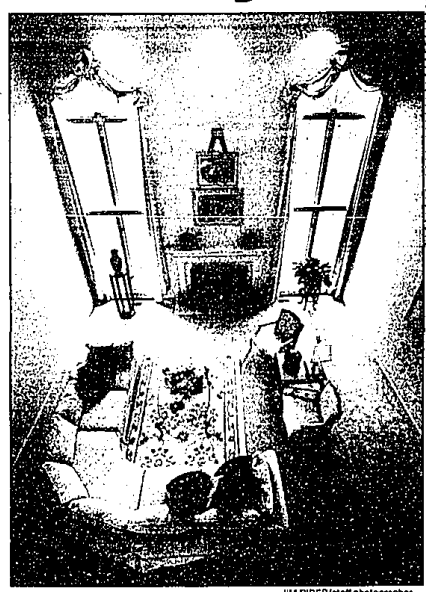


Decorator Judy Hewes had a three-week deadline to coordinate her monumental task of decorating the house so photos could be taken in order to enter two national awards programs.

An impressive beginning to the Regency is this dramatic front entrance.



Classic luxury



JIM RIDER/Staff photographer

The Regency model has an 18- by 19-foot living room with two-story ceiling and clerestory windows.

Regency model lives up to name

By Corine Abatt
staff writer

Monday-Saturday

At 5,000 square feet, the Regency, built by Dan MacLeish Custom Building Inc. is said to be the largest model in the Troy area. It is in Beach Forest subdivision, 2417 Fox Chase Blvd., east of Beach and north of Long Lake.

It is a classic styled, two-story brick home, designed for family living with formal and informal areas, a master suite on the first floor and three bedrooms, two baths and sitting room on the second.

The two-story foyer with the curved staircase divides the two areas of the main floor. On one side is the two-story living room with the clerestory windows, the master suite, library and dining room. The informal area includes the kitchen, nook, 15- by -3 foot family room, walk-in pantry, laundry room and second stairway. There are nine foot ceilings throughout the first floor. Homes in Beach Forest start at \$329,000. The model is open 1-6 p.m.

Dan MacLeish and his wife, Joyce, who coordinates a lot of the administrative aspects of the company, wanted to enter the model home in two national award programs. When they learned it would have to be furnished in order to photograph the interior, they called on Judy Hewes of Continental Interior Design of Bloomfield Hills.

HEWES HAD A three-week deadline to coordinate her monumental task. She arranged for all of the items to be loaned by local suppliers and threw a big open house so customers and friends could see the house with its beautiful, loaned finery for a few days in April.

The food was prepared and served by the students of the Troy Athens High School food service program. Those who loaned furnishings were Azar's Gallery of Oriental Rugs, Janet Kilgore, artist, the Table Setting, Pierson Interiors, Saks Fifth Avenue, Williams Sonoma and Traditional Treasures.

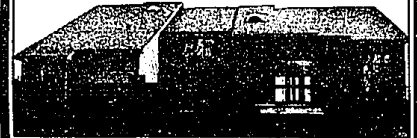
QUALITY NEW CONSTRUCTION



BEAUTIFUL NEW DEVELOPMENT
Just one of the magnificent elevations available in the new Birmingham development on Lombard Court just south of Quanton and east of Lahser! Luxurious qualities include fine brick exteriors, woodshake roofs, multiple fireplaces, marble in baths and so much more. Call for information! \$295,000 H-43013



SPECTACULAR LAKE VIEWS
An outstanding contemporary! Two-story great room with dramatic fireplace, skylight over entire staircase, balcony off master suite which overlooks the lake. Nine foot ceilings, basement with high ceilings is also plumbed for bath. Phone for further information on this new listing! \$423,000 H-47804



LAKE VIEW & BEACH PRIVILEGES
Spectacular open design with a large acre setting! Fine Euro-style kitchen with island, two-story great room with fireplace and wet bar for easy entertaining! Call for further information on this new listing! \$490,000 H-43013

CROSSWORD PUZZLER

ACROSS

- 1 Automobile
- 2 Dinner
- 3 Roof of
- 4 Mouth
- 5 Soap plants
- 6 Negative
- 7 Army meal
- 8 Carver's
- 9 Tennis stroke
- 10 Terence of
- 11 Ocean
- 12 Saviour
- 13 Portico
- 14 Nihil symbol
- 15 Trap
- 16 Dee Molnes
- 17 Jacob
- 18 Polite
- 19 deponent

DOWN

- 1 Tavern
- 2 Overhead
- 3 Highway
- 4 Go in
- 5 Hatrow
- 6 Mouth
- 7 Mouth
- 8 Mouth
- 9 Mouth
- 10 Mouth
- 11 Mouth
- 12 Mouth
- 13 Mouth
- 14 Mouth
- 15 Mouth
- 16 Mouth
- 17 Mouth
- 18 Mouth
- 19 Mouth
- 20 Mouth
- 21 Mouth
- 22 Mouth
- 23 Mouth
- 24 Mouth
- 25 Mouth
- 26 Mouth
- 27 Mouth
- 28 Mouth
- 29 Mouth
- 30 Mouth
- 31 Mouth
- 32 Mouth
- 33 Mouth
- 34 Mouth
- 35 Mouth
- 36 Mouth
- 37 Mouth
- 38 Mouth
- 39 Mouth
- 40 Mouth
- 41 Mouth
- 42 Mouth
- 43 Mouth
- 44 Mouth
- 45 Mouth
- 46 Mouth
- 47 Mouth
- 48 Mouth
- 49 Mouth
- 50 Mouth
- 51 Mouth
- 52 Mouth
- 53 Mouth
- 54 Mouth
- 55 Mouth
- 56 Mouth
- 57 Mouth
- 58 Mouth
- 59 Mouth
- 60 Mouth

Answer to Previous Puzzle

GAB SCALE ATE
AGO CORAL DEE
PEA ANAS GOAL
TAMPSO
AD P SALAMI
BOW STATIONER
ALAS ELA RETE
CONTINENT TAN
ARTIST DIAM LE
E L L L L L L L
TAGS EARL LALL
OWE AMIDE VIE
ELM BURST EYA

3 Obstruct
4 The sweetest
5 Bird's homes
6 A cont
7 Ints. for
8 Under
9 Miller

8 Great deal
9 Word of
10 sorrow
11 Tactful
12 Pallets
13 Declare
14 Sunlit
15 Interact
16 Fashion
17 Temporary
18 stop
19 Made too
20 Manager
21 Pitchers
22 Vehicles
23 colloq.
24 Sea in Asia
25 Partners
26 Lessened
27 Bertain
28 Click beetle
29 Ranted
30 Apparent
31 Additional
32 Lamb's pen
33 name
34 Cut off
35 Neon symbol
36 Rolle ID
37 Agave plant

Compliments of The Birmingham-Bloomfield Board of Realtors®

REALTOR®

EQUAL HOUSING OPPORTUNITY

weeder's guide

Continued from Page 1

and Baby Bell miniature eggplant. Raspberry 'Ruby' Cornell University's New York State Agricultural Experiment Station at Geneva has introduced a fall-fruiting raspberry called Ruby, which is a cross between widely grown Heritage and Titan. Heritage contributed the fall-fruiting characteristics, and Titan the large size. John C. Sanford said that Ruby averages "half again as large as Heri-

itage," which was introduced by the Geneva Station in 1989. Titan also came from Geneva, three years ago. According to Sanford, Ruby needs special growing care.

(Earl Aronson is the garden writer for the Associated Press. For a copy of his "AP Guide to House Plants," send \$1.50 to: House Plants, AP Newsfeatures, 50 Rockefeller Plaza, New York, NY 10020. Gardening questions must be accompanied by a stamped, self-addressed envelope.)

Has apartment hunting become a royal pain?

Then our Classified Real Estate section is the place to look, whether you need something regal or regular.

Every Monday and Thursday you'll find an impressive number of listings that cover a large suburban area. You're sure to find that special place among the large number of listings in

THE Observer & Eccentric NEWSPAPERS

36251 SCHOOLCRAFT, LYONIA, MI 48150
(313) 561-2300

1225 BOWERS, BIRMINGHAM, MI 48008
(313) 644-1100

GRAND OPENING! NEW MODELS

COLONIAL ACRES Adult Communities

Come Share our dream, exclusive country living: For adults 50 and older. No resident children under the age of 17 years.

- 1 & 2 Bedroom Ranch Units
- Private Entries
- Clubhouse and Nature Area
- Sandy Beach or Pool
- Hotpoint Appliances
- Full Basements
- Optional Fireplace, Family Room and Walkout Basements

South Lyon COLONIAL ACRES
From \$65,900
(313) 437-1159

Green Oak Twp. CENTENNIAL FARM
From \$73,900
(313) 437-8887

Williamston RED CEDAR
From \$58,900
(517) 655-3446

Model Maps:
1. Colonial Acres: 1/2 acre lots, 1500 sq ft, 2 car garage.
2. Centennial Farm: 1/2 acre lots, 1500 sq ft, 2 car garage.
3. Red Cedar: 1/2 acre lots, 1500 sq ft, 2 car garage.

Model Open: Mon.-Fri. 12-4 P.M./Sat. & Sun. 12-5 P.M.
ALSO OPEN THURSDAYS/Red Cedar Closed Thurs.
CENTAUR CONTRACTORS, INC. • COLONIAL ACRES REALTY, INC.

Site plan OK'd for 2nd Greenpointe

Site plan approval has been given to Greenpointe at Copper Creek in Farmington Hills, a \$20-million "encore" development of the highly-successful Greenpointe condominium development at 14 Mile and Halsted roads in West Bloomfield.

Construction will begin in July at the new site on the south side of 13 Mile Road between Halsted and Haggerty roads, according to developer Bernard Glibberman, president of Crosswinds Communities Inc.

"Greenpointe sold out in record time; less than a dozen of the original 430 units are left after only a little over two years," said Glibberman.

"We expect the same results with Greenpointe at Copper Creek because are going with the most popular designs from the original Greenpointe."

THE DESIGNS ARE ranch and townhouse models with two bedrooms, two-car attached garages and basements.

"Also, there will be no increase in prices (\$109,000 to \$119,000) for those who reserve during the pre-construction period," said Glibberman.

Greenpointe at Copper Creek will have 138 units and what Glibberman calls his "same, winning combination of beautiful design and amenities, open spaces, prime location and reasonable prices."

Swimming pool and tennis facilities are included in the development, which borders on a new Bob Copp-designed golf course.

"The golf course alone will make this a very fast-moving development, but the fact that it surrounded with condos in the \$200,000 price range makes it even more desirable as an investment for the home buyer," said Glibberman. For more information on the development, call 661-4422.