

Photo exhibit covers an elusive subject

Blurred and out-of-focus effects in the work of 12 North American and European photographers are examined in *Vanishing Presence* at the Detroit Institute of Arts through Sunday, Oct. 22.

Through techniques of time and multiple exposures, these contemporary photographers allude to realities beneath the surface of everyday appearances. As nearly 150 photographs in the exhibition reveal, the medium not only records images fixed in time and place, but also fugitive images that transcend such limitations and exist in another world, mysterious time warp. Photography is not restricted to still subjects of decisive moments, it may also record indecisive moments.

Vanishing Presence is introduced by a section of 19th and early 20th century portraits, genre studies and urban views that foreshadow many contemporary approaches — haunt-

ing street scenes by French photographer Eugene Atget and Scottish photographer Thomas Annan, and movement studies by American painter/photographer Thomas Eakins and Italian futurist photographer Antonio Giulio Bragaglia.

The larger section of *Vanishing Presence* features 20th century photographers who exploit the medium's temporal characteristics.

Among them are Ralph Eugene Meatyard's ominous 1960s portraits of his friends and family; Diane Michal's disquieting, mystical narratives; Mary Beth Edelson's mysterious rituals conducted by shrouded figures in primeval settings; German performance artist/photographer Bernhard Blume's zany, large-scale "Kuchenkoller" series (1987), which depicts everyday kitchen utensils and food coming to life; Anne Turyn's "Lessons & Notes" series which explores the concerns of language

and memory as they relate to childhood; and Lucas Samaras's colorful Autopolaroids that dissolve the physical substance of his body and fuse it with the studio environment.

Also on view will be Dieter Appelt's blurred and foggy self-portraits that evoke the technical imperfections of early photographic imagery; Joseph Jaczyna's mystical Icelandic landscapes strangely interrupted by the movement of his hand in front of the lens; William Klein's bold, grainy images of street life in Paris, New York, Tokyo, and Mos-

cow; Francesca Woodman's intimate self-portraits revealing romantic fantasies and recurrent anxieties; and Patrick Ticeani's large, color portraits with optical effect reminiscent of Impressionist painting.

Vanishing Presence is one of several exhibitions scheduled by the Detroit Institute of Arts in honor of the 150th anniversary of photography.

The exhibition is open to the public without charge in the DIA's Schwartz Graphic Arts galleries from 9:30 a.m. to 5:30 p.m. Tuesday-Sunday.

Spotlighting authors

"An Evening Among Friends" 7:30-9:30 p.m. Saturday, Sept. 9, at Birmingham's Baldwin Public Library, 300 W. Merrill will feature readings by well-known writers.

Co-sponsored by the Friends of Baldwin Library and Borders Book Shop, the guest will include publisher/author/painter Russell Catham and his good friends, au-

thors Dan Gerber of Fremont and Jim Harrison of Lake Leelanau. The program celebrates the Clark City Press of Livingston, Mont. Refreshments will be served.

Tickets are \$5 and are available from the library and from Borders, Southfield and 13 Mile Roads, 644-1315. For information, call Baldwin Library, 647-1700.


Local artists to meet

The Farmington Artists Club will hold a monthly meeting 7 p.m. Wednesday, Sept. 13 in the auditorium of the Farmington Hills Public Library.

Eather Cooper of Arts speakers' bureau, who teaches at Wayne State University, will speak on modern art. The public is invited. There is no charge.

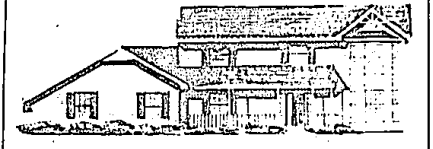
GIVE THE TIME OF YOUR LIFE.

Be a volunteer.



American Red Cross

Good Things Come to Those Who Wait . . . and Now the Wait is Over.



At last it's here—a neighborhood with all the warmth and charm of rolling hills and tall pine trees—Waling Woods. After months of careful planning and design, two beautifully decorated and furnished model homes from Hauser & Baum Custom Home Builders, Inc., are now open and you're invited for a grand tour.

Come stroll through our spacious rooms, take in the timeless beauty and livability of traditional architecture and detailed styling with contemporary comfort that give Waling Woods its distinctive appeal.

Waling Woods is not simply a development of exceptional homes, it's an exceptional small community. When complete, it will include a more than 3 acre park with bike and jogging paths, creating an environment ideally suited for the active family.

At last, the home you've been waiting for has finally arrived—Waling Woods—recapturing a tradition in fine living. Affordably priced from \$139,900.

Waling Woods is conveniently located in Highland Township on Harvey Lake Road, 1/4 mile north of M-59. Model homes are open daily 12-6, Saturday and Sunday 1-5, closed Thursdays. Call (313) 887-9161 or (313) 632-7880 for more information.

Hauser & Baum
CUSTOM BUILDERS, INC.
11526 Highland Rd., *Harland
313/632-7880

STONEBRIDGE

Meet Mr. Seth and Mrs. Lindsey. Two friends sharing a moment that just might be remembered for the rest of their lives.

It's a scene that happens at a family community like Stonebridge, every day. On sidewalks where children play. At get-togethers where neighbors meet and talk. And in West Bloomfield schools where education is still a priority.

Stonebridge is much more than just quality homes. It's large bedrooms and family rooms, luxurious bathrooms, soaring different floorplans, vaulted ceilings and European kitchens. But most of all living at Stonebridge is the start of something beautiful.

Prices from \$273,000
Homes available immediately.
Call for a brochure today.
Phone 661-6254

Memories start here.

in West Bloomfield's premier community

Come visit us daily & weekends 12-5 • Closed Thursday
Located south of Maple Road between Farmington and Drake Roads in West Bloomfield
Another Nolan/Cohen Associates and Selective Homes Development
Decorated Model by Dorman's Gallery

THE MICHIGAN GROUP

West Bloomfield office
851-4100
7400 Middlebelt

THE SIGN OF SUCCESS with offices in
• West Bloomfield
• Brighton
• Ann Arbor
• Livonia

FABULOUS ORCHARD LAKEFRONT - 173 ft. on Orchard Lake. Approximately 1 acre. 7 bedrooms, 3 1/2 baths, 2 large white Formica kitchens with Sub Zero, Jenn-Aire and self cleaning ovens. Deck, heated swimming pool, hot tub, sauna room, garden and atrium and room great, cathedral 2 car attached garage. (OR-26)

EXTRAORDINARY - 3 bedroom 1 1/2 level with fireplace, den, central air, newer furnace, floors, carpeting. Freshly painted. 2 1/2 car garage. Birmingham Schools. Owner transferred and ready to go. (DU-10) \$111,500

YOUR FAMILY WILL LOVE - This immaculate 4 bedroom, 2 1/2 bath home in Kimberly North Subdivision. 1st floor laundry, family room with full brick wall fireplace, library has built in shelves. New roof in 1987. hardwood floors in upper level. Beautiful private back yard. Farmington Hills Schools. (HE-73) \$162,400

EXECUTIVE COLONIAL - Tudor with 4 bedrooms, 2 1/2 baths, library, old world craftsmanship shows in this immaculate home. Hand-crafted woodwork, ceramic floor, central air, ideal location. (FO-23) DON'T WAIT, WON'T LAST AT \$198,500

INVESTORS SPECIAL - Charming Cape Cod close to shopping, expressways, yet on quiet road. Large back yard, 3 bedrooms, 2 car detached garage, basement. Waterford Schools. (PR-10) \$81,900

BEST BUY ON PINE LAKE - Bloomfield Hills Schools. Completely updated 3 bedroom, 2 story home with 3 baths, living room, dining room, library, family room, sun room, huge deck. New sea wall, 65 ft. on Pine Lake. (LO-32) \$350,000

EXECUTIVE COLONIAL - Tudor with 4 bedrooms, 2 1/2 baths, library, old world craftsmanship shows in this immaculate home. Hand-crafted woodwork, ceramic floor, central air, ideal location. (FO-23) DON'T WAIT, WON'T LAST AT \$198,500

SWIMMING AND PINE LAKE BOAT SLIP AVAILABLE - Glamorous Contemporary two story. White marble foyer. New all-white Formica kitchen has new appliances plus new GE side by side refrigerator. Great room has high ceilings, well lit. Fine central air, furnace, roof and lighting fixtures. Library. 2 car attached garage. (PI-23) \$235,000

NEW LISTING - RIVERBANKS - Stunning builder's own home. Great quality. Huge 5 bedroom ranch. \$200 sq. ft. White marble foyer, Great room, family room, library. Large walk-in closets, finished without lower level. Circular drive. 3 car attached garage. (FI-23) \$249,900

DRAKE AND 14 AREA - Beautifully well built 5 bedroom brick Colonial with 2 1/2 baths, family room, fireplace. Owner transferred. Huge lot. 2800 sq. foot home with newer carpet. Lots of privacy. Motivated. (BE-31) \$185,000

Listen to the Experts

"I think FUNK & COMPANY BUILDERS are second to none... they take the time and trouble to do the job right."

Jerry Maracchini... 38 years (Tile & Marble)
GARDEN CITY TILE & MARBLE (Garden City)

"No one takes shortcuts, either in labor or quality of materials... FUNK & COMPANY BUILDERS demand our best workmanship."

Leon Plekarski... 35 years (Rough & Finish Carpentry)
CARPENTRY BY WOODCRAFT, INC. (Livonia)

"FUNK & COMPANY BUILDERS pay attention to quality... and people get what they're paying for."

Dennis Layer... 25 years (Drywall & Plaster)
LAYER CONSTRUCTION COMPANY (Redford)

"We do our best everyday to live our slogan... we build every home as if it were our own!"

Neil Wurmliinger, Construction Manager
FUNK & COMPANY BUILDERS, INC.

"We are different... we build elegant custom homes, that are condominiums. With personal attention to every detail, our customers get just what they want... QUALITY AND VALUE, like no where else!"

Jim and Marilyn Funk, Builders
FUNK & COMPANY BUILDERS, INC.

COME SEE FOR YOURSELF...

THE LEGENDS
of Farmington Creek
By its very nature... exceptional

30 Elegant Condominium Homes
(14 Mile & Halsford Roads, Farmington Hills)
call... 661-8324

Coming Soon

and, introducing... **THE CROSSINGS Condominiums**
(Drake Road, between 13 & 14 Mile Roads, Farmington Hills)