

Bedrooms separated from activity centers

The master suite of the Emerald 2 is a world unto itself on the home's second floor. But the main level is an assemblage of activity centers where a family with diverse interests can come together.

Up a few steps to the entry deck and through double front doors sits a tiled foyer. Open to the second story, it creates a formal introduction to the home.

To the left is a sunken living room with skylights for its vaulted ceiling, a corner fireplace and a symmetrical arrangement of narrow and wide windows in a modified bay. To the right is a den with a bay window. Up a few steps is a half bath. A utility room is found near the steps leading down to the garage.

Around a corner is a 15 by 17 family room. Sliding glass doors open to a rear deck. The adjacent kitchen offers a clear view of the deck from a garden window over the clean-up station. A wide coun-

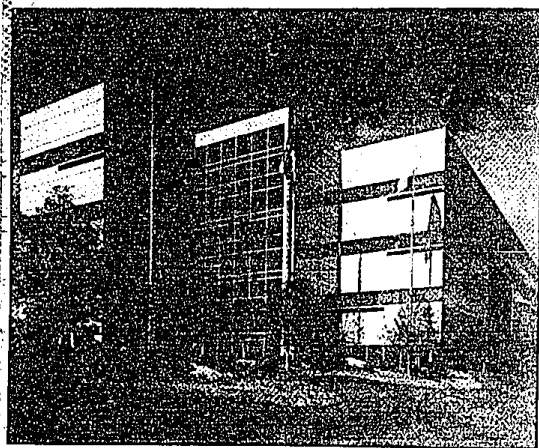
ter open to the adjacent dining room can double as an eating bar with the addition of a few stools.

The bedrooms on the main floor are isolated from the home's activity centers and are identical in size separated by a shared bathroom. Both have step-in closets and built-in shelving, vaulted ceilings and large windows.

The second story is dominated by a high-ceiling master suite and adjacent study, which boasts a bay window and fireplace. The sleeping area, with sliding glass doors to a private balcony, measures 15 by 14 feet. A step up leads to the bath, equipped with a combined spa/tub, double sinks and a separate shower.

The walk-in closet has built-in shelving, ample storage room and a laundry chute to the downstairs utility room.

For a study plan of the Emerald 2 (226-72), send \$5 to Landmark Designs, P.O. Box 2307, Eugene, Or. 97402 and specify plan name and number.



Solomon moves

Continental Plaza is the new home of the Solomon Group, developers of \$300 million in commercial and residential property. The company will occupy 9,000

square feet of the building at 2701 Troy Center Drive, south of Big Beaver between Crooks and I-75 in Troy.

**Words can hit
a child as hard
as a fist.**



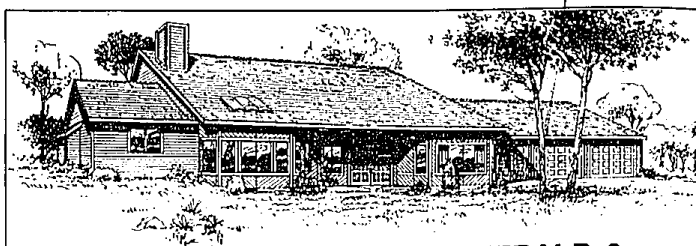
Get the picture?

What you say to children can determine how they feel about themselves. And how they feel about you. When you're upset, get hold of yourself. Stop and think about what you're saying. Stop using words that hurt. Start using words that help.

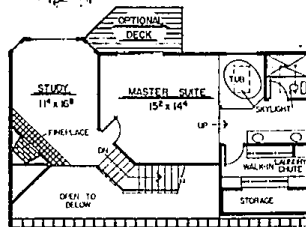
**Stop using
words that hurt.**

For helpful information, write: National Committee for Prevention of Child Abuse, Box 28665, Chicago, IL 60620.

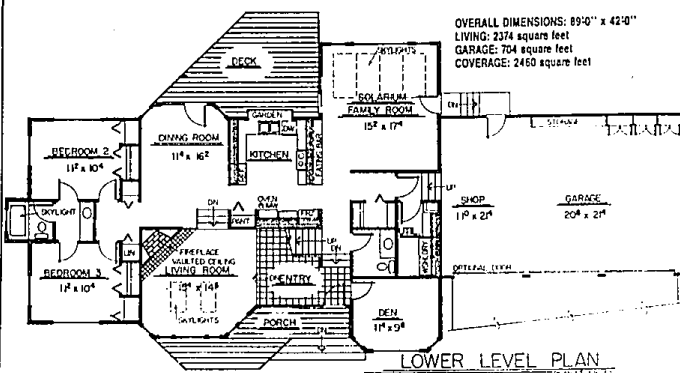
Ad



EMERALD 2



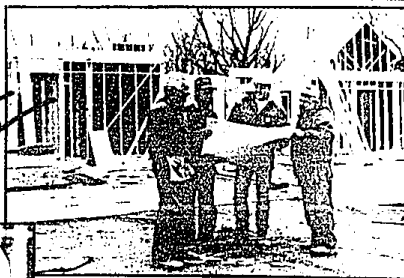
UPPER LEVEL PLAN



LOWER LEVEL PLAN

OVERALL DIMENSIONS: 89'0" x 42'0"
LIVING: 2374 square feet
GARAGE: 704 square feet
COVERAGE: 2460 square feet

*Listen
to the
Experts*



"I think FUNK & COMPANY BUILDERS are second to none... they take the time and trouble to do the job right."

Jerry Marcocchini... 38 years (Tile & Marble)
GARDEN CITY TILE & MARBLE (Garden City)

"No one takes shortcuts, either in labor or quality of materials... FUNK & COMPANY BUILDERS demand our best workmanship."

Leon Plekarski... 35 years (Rough & Finish Carpentry)
CARPENTRY BY WOODCRAFT, INC. (Livonia)

"FUNK & COMPANY BUILDERS pay attention to quality... and people get what they're paying for."

Dennis Layer... 25 years (Drywall & Plaster)
LAYER CONSTRUCTION COMPANY (Redford)

"We do our best everyday to live our slogan... we build every home as if it were our own!"

Neil Wurmlinger, Construction Manager
FUNK & COMPANY BUILDERS, INC.

"We are different... we build elegant custom homes, that are condominiums. With personal attention to every detail, our customers get just what they want... QUALITY AND VALUE, like no where else."

Jim and Marilyn Funk, Builders
FUNK & COMPANY BUILDERS, INC.

**COME SEE FOR
YOURSELF...**



**THE
LEGENDS**
of Potomac Creek
By its very nature...
exceptional!

**30 Elegant
Condominium Homes**

(14 Mile & Halsford Roads, Farmington Hills)

Call... **661-8324**

Coming soon

and, introducing... **THE CROSSINGS Condominiums**
(Drake Road, between 13 & 14 Mile Roads, Farmington Hills)