



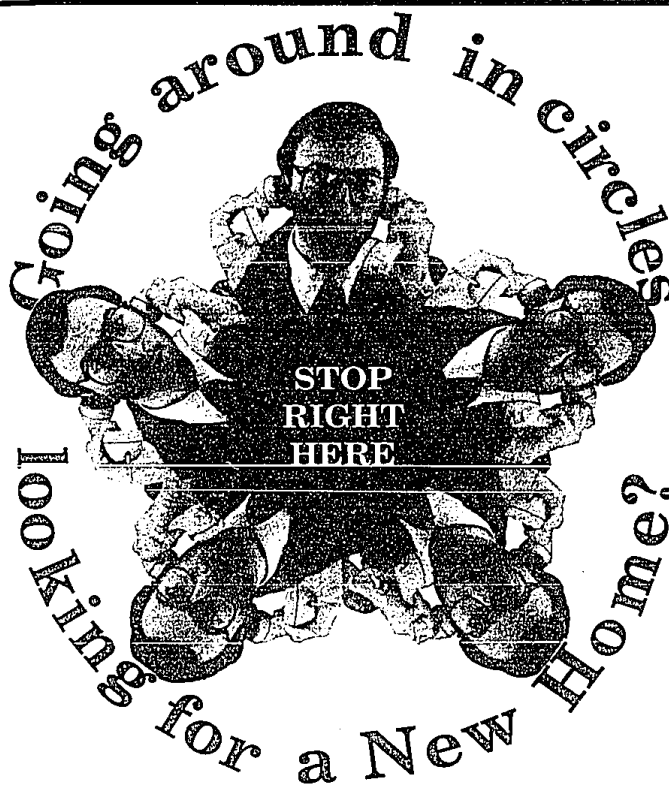
'Five Painters' on exhibit

This watercolor, 18 by 24 inches, by Electra Stamelos is in the show, "Five Painters," at Paint Creek Center for the Arts of Rochester through Nov. 10. Those showing with her are Russell Keeter, John Fiedtke, Karen Wydra and Alan Paulson. Keeter, professor of fine arts at the Center for Creative Studies, is the mentor of the others. Stamelos describes her work as "figurative abstraction, an intensification of nature."

Men, if you're about to turn 18, it's time to register with Selective Service at any U.S. Post Office.



It's quick. It's easy. And it's the law.



The Creative Living section featuring many homes in lovely areas.

Observer & Eccentric
NEWSPAPERS

Dance Day announced

Oakland Community College, Royal Oak Campus, in cooperation with Detroit Dance Collective, has set a Community College Dance Day 10 a.m. to 6 p.m. Saturday on campus.

Dance students and instructors from OCC and Washburn, Henry Ford, Macomb and Wayne County community colleges will attend classes taught by various instructors, see a dance film and a dance concert, participate in choreography workshops and do informal showings of their own work.

Barbara Selinger, co-artistic director of Detroit Dance Collective, will perform her "Solo Journey" concert at 2 p.m. at the college's Lila Jones-

Johnson Theater.

Selinger includes favorites from past performances as well as two new solos, "Other Places" and "Journey's End," both made possible by a Creative Artist Grant awarded by the Michigan Council for the Arts.

Appearing with her is Joseph LoDuce, noted composer/musician, who has received several Emmy awards for music.

General admission for the concert is \$8, students with current ID and seniors, \$6. OCC is at Lincoln (10 1/4 Mile) and Washington, five blocks east of Woodward. Call 548-9664 for reservations and information.



Send Your Love Around The World.

A poor child thousands of miles away urgently needs your love and concern. Without your help, that child most certainly faces hunger, illiteracy or disease. But through Christian Children's Fund, one of the world's oldest and most respected child care organizations, you can help provide education, nourishing food, medical attention or whatever a child needs most. You can give that child a real chance for a healthier, happier future. To find out how you can join with thousands of other Christian Children's Fund sponsors in helping defeat poverty one child at a time, just call our toll-free num ber. Without any obligation, you'll receive complete information on our sponsorship programs. Please do it now—there's a hungry, poor child who needs your love so much.

Christian Children's Fund, Inc.

1-800-776-6787



RED CARPET KEIM

FREE Real Estate License Training. Call your local office.

Birmingham Inc.
1955 S. Woodward
645-5800

Classic
1740 W. Big Beaver
Suite 100
649-1000

Associates, Inc.
5635 W. Maple
655-9100

Maple, Inc.
3605 W. Maple
642-6500

Maple West, Inc.
28275 Orchard Dr.
553-8888

Rochester Inc.
426 University
652-2200

Walker & Assoc.
22110 W. 10 Mile
354-1500

North, Inc.
28550 Southfield Rd.
657-7700



LIKE NEW
Lovely Colonial with contemporary flair, oversized lot, rec room, 3 bedrooms, great room with fireplace, tiered deck. \$119,900. 645-9300



FRANK LLOYD WRIGHT STYLE
4 bedroom, Bloomfield Contemporary with breathtaking view, 2 fireplaces, vaulted ceilings, expansive glass window walls, wooded ravine setting. 645-5800.



TROY
New construction! Three bedroom colonial with library, great room, 2 1/2 baths, central vacuum, central air, basement, attached garage. \$189,900. (5433) 649-1000.



TROY
Country atmosphere surrounds this 3 bedroom ranch with family room, 1 1/2 baths, basement and 2 car garage on 100x200 lot. Asking \$124,900. (M152) 649-1000.



A TRIPLE TREAT!
Airy, spacious, inviting! Stunning 4 bedroom, 2 1/2 bath contemporary. Marble entry, white formica kitchen, Jacuzzi, much more! \$289,900 (71). 855-9100.



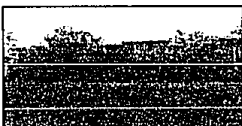
BLOOMFIELD HILLS SCHOOLS
Great family home in Birmingham Farms. Open kitchen has roomy eating space and pretty bay window, family room with fireplace. \$159,900 (G1). 855-9100.



SHARP ROYAL OAK RANCH!
Prime location. Large kitchen and eating area with lots of cabinet and counter space. Florida room off formal dining room. Living room with natural fireplace. \$108,500. 642-6500.



CITY OF BLOOMFIELD HILLS.
This is not your usual quad. Approx. 3500 sq. ft. of living space. In-law or guest suite on main level. Family room lower level with walkout to patio/pool area. \$399,900. 642-6500.



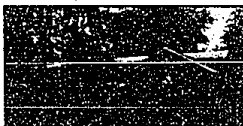
SOUTHFIELD
Move in condition. Large 3 bedroom, 2 bath ranch. Extras galore! Lovely family room with fireplace, 2 car attached garage, on a large well landscaped corner lot. \$89,800. 557-7700.



SOUTHFIELD
Very sharp and clean 3 bedroom ranch. Park like setting in back yard. Enjoy the Autumn evenings in front of the large natural fireplace. All for just \$61,900. 537-7700



GREAT LOCATION
Perfect investment for business location or office. Pole barn, one acre, 2800 sq. ft., walk-out, 2 1/2 baths, 3 bedrooms. \$159,900. (27A) 652-2200.



BELLASERENE HILLS
Close to shopping, schools, entertainment. Large, tired corner lot. 3 bedroom ranch, cathedral ceilings. Neutral decor. Much more! \$129,900. (45B) 652-2200.



GREAT OPPORTUNITY
Coney restaurant located in center with Kmart. On going business, great lunch and walk-in crowd. Land contract available. Listed at \$170,000. 354-1500.



LEAVE OR BUY
Super 4 bedroom, 2 1/2 bath trilevel in subdivision near Beverly Hills. Lease, fully furnished, \$1500 per month, \$130,000. Call for more details and appointment. 354-1500.



LOADED WITH CHARM
Tastefully decorated in neutral tones. Family room with fireplace and doorwall in deck, new steammaster carpeting. All this on a private lot. \$124,900. 553-8888.



PERFECT CONDITION! PERFECT PRICE!
Terrific colonial. New kitchen with oak cabinets, flex room with bar. Large master bedroom, newer carpeting, 3 bedroom, 1 1/2 bath, family room with fireplace. \$78,900. 553-8888.