

Raku pottery up for show, sale

The Smithsonian Institution's first purchase of Raku ceramic was a sculpture by Robert Piepenburg who is still not certain which of his works displayed at a Washington gallery was selected.

Piepenburg's strong sculptural pieces will be exhibited locally in Birmingham's Temple's 17th Annual Fine Art Show and Sale Nov. 3-5.

The department head of ceramics at Orchard Ridge Campus of Oakland Community College authored "Raku Pottery," a best seller in its field 15 years ago, that will be revised and reprinted next year.

He has been awarded a grant from the National Endowment for the Arts and has received two grants from the Michigan Council for the Arts before he became chairman of the Advisory Panel for three years.

Piepenburg began work in ceramics during his art training at Eastern Michigan University where he acquired three art degrees. He still is excited at the memory of the excited discovery that he wanted to spend his life working with clay.

His love of the medium is transmitted to his classes. He said he feels that he functions as a midwife to his students and thrills at helping them grow. As one of his greatest joys is teaching, he is enriched by the sense that he has learned to teach art effectively.

Raku pottery requires several processes and the artist must fire each piece himself. The piece is fired in a kiln at 2000 degrees F., then removed and smoked in straw. This

burnout produces rich color and a metallic glaze effect. Each firing produces a surprise for the artist as the results of the burnout are somewhat unpredictable and no two pieces ever are alike.

PIEPENBURG'S purpose in his work is the aesthetic expression of feeling. Sales are incidental. He devotes meticulous attention to every creation, working slowly, allowing each to develop its own character. His primary interest is strength of form, rather than color or surface detail; his sculptures contain elements of architecture.

The works, ranging in size from seven inches to four feet or more, all are modeled and carved.

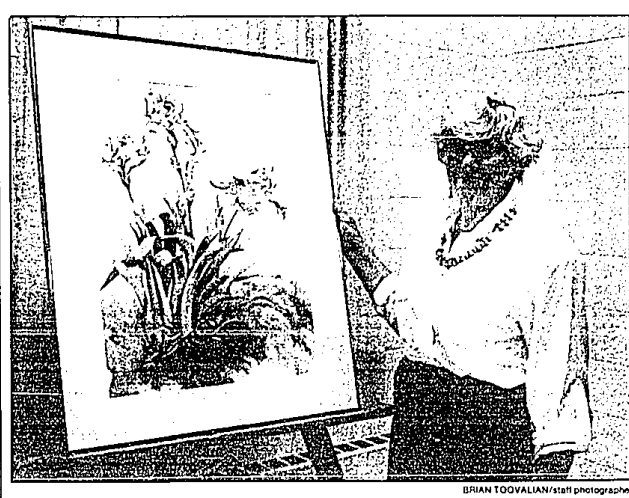
Exhibits in the show will include works of 140 invited artists of painting, photography, sculpture, ceramics, glass, jewelry, weaving, basketry and more, with a background of live music.

Some works of art from the show will be awarded as door prizes before the conclusion.

The preview to Birmingham Temple's Art Show will open at 8 p.m. Friday, Nov. 3. Guests can meet the artists, sample wine and cheese, enjoy live music as they view the exhibits for a \$5 contribution.

The show will continue from 10 a.m. to 5 p.m. Saturday and Sunday, Nov. 4-5. Admission is free until noon each day and \$2 thereafter.

Birmingham Temple is at 28611 12 Mile Road between Inkster and Middlebelt.



BRIAN TOOVALLAN/staff photographer

Irises in the Mist

Fran Nicholson has won the third place award for "Irises in the Mist" in the judging leading up to Farmington Artists Club's fall show and sale Oct. 25-28. Show hours are 9-9 p.m. Wednesday, 10 a.m. to 9 p.m. Thursday and Friday and 10 a.m. to 3 p.m. Saturday in Nardin Park United Methodist Church, 11 Mile west of Middlebelt. No admission charge. Refreshments are complimentary.

Samaritan Center adds a staff member

The board of directors of the Samaritan Counseling Center of Southeastern Michigan announces the addition of the Rev. Dr. Nancy Giesler Devor, to the staff of the center. The announcement was made by the Rev. Dr. Wesley L. Brun, executive director.

Dr. Devor is a Phi Beta Kappa graduate of Macalester College. She prepared for the ministry of the United Methodist Church by completing her master of divinity degree

at the Divinity School of Yale University. Her doctorate was earned at Boston University. She did her clinical training at the Danielson Institute (Boston University) where she was named Danielson Fellow. She is a fully ordained clergy in the United Methodist Church holding membership in the denomination's Maine Annual Conference. She also is a clinical member of the American Association of Pastoral Counselors.

In addition to her pastoral and

clinical abilities, Dr. Devor has published articles in The Christian Century, Circuit Rider (a periodical for United Methodist clergy), and The Journal of Pastoral Care.

COMMENTING ABOUT Dr. Devor's background, Dr. Brun said "Nancy brings a rich preparation in both pastoral and clinical work. She has served parishes in both Michigan and Maine. In her clinical work, she has diverse experience with college students, handicapped elderly, cou-

ple, family and group psychotherapy. We are pleased to welcome her back to Michigan and to the staff of the Samaritan Counseling Center of Southeastern Michigan."

The counseling center is ecumenically sponsored which endeavors to bring together the resources of Christian faith with the best of psychological and psychiatric practice.

Appointments to see Dr. Devor or other members of the center staff can be made by calling 474-4701.

Raising children is topic for psychologist's talk

Today's parents face many complex challenges in raising their children. Foremost among those challenges is the issue of developing capable, self-reliant young people with strong judgment and good interpersonal skills.

Providence Hospital, in conjunction with the Youth Assistance programs of Novi, Farmington, South Lyon and the Lakes Area, will sponsor an evening program addressing those challenges. The program will begin at 7:30 p.m. Wednesday, Nov. 8, in the Novi Community Center Auditorium, 45175 10 Mile Road. Cost is \$3 per couple and pre-registration is required since space is limited.

The speaker will be H. Stephen Glenn, an internationally acclaimed family psychologist and author of more than 100 papers, articles and books including "Developing Capable People," "You've Got To Be Kidling" and "Basic Substance Abuse Counseling." Glenn also produced an award-winning educational television series on the family called "Involved."

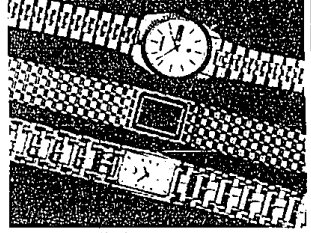
GLENN HAS received many national service awards and has been a consultant to the Congressional Select Subcommittee on Narcotics.

He holds a master's degree from Brigham Young University and completed his graduate work at Brigham Young and Indiana University. He is currently completing his doctorate. He served on the faculty of the Medical School of the University of Miami in Florida where he also directed the U.S. Office of Education Southeast Regional Training Center.

In addition to the evening program for parents, Glenn will also present a daylong workshop for professionals, teachers, social workers, administrators in the Novi, Farmington, Walled Lake and South Lyon area.

To obtain more information or to register for either the parent program or the professional workshop, contact Farmington Youth Assistance at 476-3840.

Save up to 40%
On select name brand
watches and clocks.



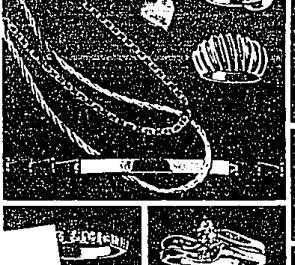
Save up to 60%
On beautiful giftware
Entire collection of
brass, cut crystal,
porcelain gifts and
figurines.



Save up to 60%
On selected precious
gemstones for men and
women. Rings, pendants,
earrings & bracelets.



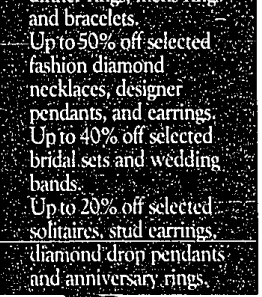
Save on 14 Kt.
Solid Gold Jewelry.
25% off all 14 Kt. gold
chains and bracelets.
30% off all 14 Kt. hoop
and fashion earrings.
35% off all 14 Kt. gold
charms.



Save On
Diamonds!
Up to 60% off selected
dinner rings, mens rings
and bracelets.
Up to 50% off selected
fashion diamond
necklaces, designer
pendants, and earrings.
Up to 40% off selected
bridal sets and wedding
bands.
Up to 20% off selected
solitaires, stud earrings,
'diamond' drop pendants
and anniversary rings.



Save On
Diamonds!
Up to 60% off selected
dinner rings, mens rings
and bracelets.
Up to 50% off selected
fashion diamond
necklaces, designer
pendants, and earrings.
Up to 40% off selected
bridal sets and wedding
bands.
Up to 20% off selected
solitaires, stud earrings,
'diamond' drop pendants
and anniversary rings.



Raymond Weil and Gucci
watches not included.
Non-Lon Downs and Swarovski Crystal
not included.
Percentages off regular prices. Proceeds from jewelry
may have been lower. Sale ends October 31, 1989.
Jewelry enlarged to show detail.

Center marks 20th year

Editor's note: For 20 years the doors of The Community Center have been kept open through the work of men and women who volunteer to serve as its directors. The Farmington Observer intro-

duces the members of the 1989 board to readers as part of the center's 20th anniversary year observance.

State Rep. Jan C. Dolan is a five year member of the board of directors for The Community Center Farmington-Farmington Hills. She served as president of the board of directors and has served on numerous committees including the long range planning, feasibility and nominating committees.

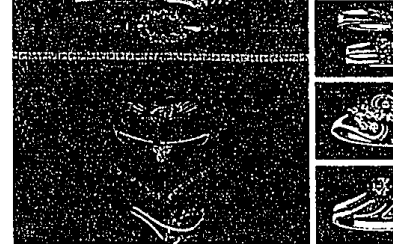
Dolan enjoys seeing the growth and development of the arts at the center and working with other board members who represent a cross-section of the community. A fan of the summer concert series at the center, she wishes that more people realized the potential of the center to become a catalyst of the arts and appreciated the benefits of having such a unique facility in their backyards.

A 23 year resident of Farmington Hills, Dolan served two terms of office as the mayor of Farmington Hills and 14 years on the Farmington Hills City Council. She is on the board of directors for the YMCA and a member of the Rotary Club, League of Women Voters, Older Women's League (OWL), American Association of University Women and Farmington Garden Club.



Jan Dolan

It Would Take
Several Pages To Show
You Everything That's
On Sale During Our
Big 69th Anniversary
Sale. Save Up To 60%!
Meyer Jewelers
(The Jewelers of Farmington)
Since 1922



Cancer is one thing that will not go away if you ignore it.

Learn the early warning signs of cancer and have regular checkups. If you don't know the warning signs, call us.

1-800-4-CANCER
The Cancer Information Service

Mail Stores open every evening, and Sunday noon to 5 p.m. • Woodward at Grand River, Downtown • Grand River at Greenfield • Northland • Southland • Eastland • Westland • Fairlane Town Center • Twelve Oaks • Lakeside • Oakland Mall • Blainwood • Livonia Mall • Woodland • Macomb Mall • Sunnyside Plaza • Southfield at Dixie • USE YOUR MEYER CHARGE • OR USE MASTERCARD • VISA • AMERICAN EXPRESS • CARTE BLANCHE • DINERS CLUB • DISCOVER