

Creative Living



Monday, December 11, 1989

(C1E)

exhibitions

- BLOOMFIELD TOWNSHIP LIBRARY**
 Tuesday, Dec. 12 — Photo exhibit featuring activities and events in nine Oakland County Parks, sponsored by Oakland County Parks and Recreation Commission continues through Jan. 2. Open during regular library hours, Lone Pine at Telegraph, Bloomfield Township.
- DETROIT REPERTORY THEATRE**
 Tuesday, Dec. 12 — Paintings by Linda Mendelson are on display through December. Reception for the artist 7-9 p.m. Tuesday. Open during the run of the show, "Blood Relations," 8:30 p.m. Thursday-Saturday and 2 p.m. and 7:30 p.m. Sunday, 13103 Woodrow Wilson, Detroit.
- BIRMINGHAM BLOOMFIELD ART ASSOCIATION**
 Thursday, Dec. 14 — Christmas Pottery Sale includes the work of 30 student potters and instructor Jan Sadowski. Once a student, always a student — many of those potters are at a professional level. Hours are 10 a.m. to 9 p.m. Thursday and Friday, until 5 p.m. Saturday and Sunday, 14 Mile and Cranbrook, Birmingham.
- LAWRENCE TECHNOLOGICAL UNIVERSITY**
 "Architecture in Perspective IV," award winning architectural delineations from North America, continues through Dec. 21, 8:30 a.m. to 4:30 p.m. in the architectural gallery, 21000 W. 10 Mile, Southfield.
- CANTOR/LEMBERG GALLERY**
 Seven new large scale screen-prints by Frank Stella are featured during December. These incorporate lithographic and linocut block prints, hand-coloring, marbling and collage. They were started in 1985 and completed this fall. Hours are 11 a.m. to 5:30 p.m. Tuesday-Saturday, 538 N. Woodward, Birmingham.
- BELIAN ART CENTER**
 Objets d'art as well as art and ready to wear jewelry are on display to Jan. 14. Hours are noon to 6 p.m. Monday-Saturday, 5980 Rochester Road, Troy.
- RUBINER GALLERY**
 Holiday show features works by Burkert, Shaler, Summers, Thayer, Jerry and Milton. Hours are 10:30 a.m. to 5 p.m. Tuesday-Saturday, 7001 Orchard Lake, West Bloomfield.
- WILLIS GALLERY**
 "Face the 90's," an exhibit of ultra media works continues through Dec. 16. The artists, from California, New York and Michigan, represent a diverse approach toward post-modern sculpture. Hours are 2-5 p.m. Wednesday-Saturday, 422 Willis Detroit.
- TOUCH OF LIGHT**
 Handblown glass by John Fitzpatrick continues through Dec. 23 and includes plates, vases, paperweights, lamps et al. Hours are 11 a.m. to 5:30 p.m. Tuesday-Friday, until 9 p.m. Thursday, and 4 p.m. Saturday, 23426 Woodward, Ferndale.
- DETROIT INSTITUTE OF ARTS**
 "Furniture by Wendall Castle" continues through Feb. 4. The DIA is originating this spectacular show which will travel to five museums in the United States. Open free of charge 9:30 a.m. to 5:30 p.m. Tuesday-Sunday, 5200 Woodward, Detroit.
- COUNTY GALLERY**
 The Surface Designers of Michigan, 21 in all, have an exhibit of dimensional art through Jan. 12. Open to the public. Hours are 9 a.m. to 5 p.m. Monday-Friday, Executive Office Building, 1200 N. Telegraph, Pontiac.
- DONALD MORRIS GALLERY**
 Paintings by Clement Meadmore are on display through January. Hours are 11 a.m. to 5 p.m. Tuesday-Saturday, 105 Townsend, Birmingham.
- HOMESTEAD GALLERY**
 Holiday show featured works by more than 100 artists, 186 S. Pontiac Trail, Walled Lake.
- ARTSPACE**
 Art by early 20th century American artists such as Soyer, Sloan, Gropper, Goodwood, Benton, Wood and Hosen are on display. Hours are 11 a.m. to 5:30 p.m. Tuesday-Saturday, 574 N. Woodward, Birmingham.
- PIERCE STREET GALLERY**
 "Post-Object Series by Bill Rauhauer" is on display through January. He teaches photography at Center for Creative Studies and is known for refining everyday things to their purist form. Hours are 11 a.m. to 5 p.m. Wednesday-Saturday, 217 Pierce, Birmingham.
- SUSANNE HILBERRY GALLERY**
 Sculpture by Richard Rezae is on display through January. Hours are 11 a.m. to 5 p.m. Tuesday-Saturday, 555 S. Woodward, Birmingham.
- FEIGENSON/PRESTON GALLERY**
 New work by more than a dozen artists affiliated with the gallery are on display through Jan. 6. Hours are 11 a.m. to 5 p.m. Tuesday-Saturday, 796 N. Woodward, Birmingham.
- YANOVER CREATIVE LIAISON**
 Small works exhibit features engraving, painting, photography and sculpture by some outstanding area artists. Continues through December. Hours are noon to 5 p.m. Tuesday-Saturday, 30927 Schoolcraft, Livonia.
- HABATAT GALLERIES**
 Works by two outstanding glass artists, David Jenken and Ginny Ruffner are on display through December. She's one of the most innovative to be found anywhere. The gallery is at 32255 Northwestern, Farmington Hills.
- SUMMIT PLACE MALL**
 Arts and craft sale by Pontiac Oakland Society of Artists continues through Dec. 24. Open during regular mall hours, South Mall, Elizabeth Lake Road entrance, Telegraph and Elizabeth Lake, Pontiac.
- FOUR WINDS GALLERY**
 "Dimensions in Silver," jewelry by Sam Lovato of Santo Domingo pueblo is in the gallery through December, 340 E. Maple, Birmingham.
- GALLERY BIRMINGHAM**
 "The Fusion of Art and Rock 'n Roll," an exhibit of portraits by Ron Wood continues through Dec. 15. The legends of rock 'n roll are his subjects. Hours are 10 a.m. to 5 p.m. Monday-Saturday, until 8 p.m. Thursday, 223 S. Woodward, Birmingham.
- ALICE SIMSAR GALLERY**
 "Fiber On & Off The Wall," features works by Gerhard Knodel, head of Cranbrook Academy of Art fiber department and six other artists. Hours are 10 a.m. to 5:30 p.m. Tuesday-Saturday, 301 N. Main, Ann Arbor.
- DOS MANOS**
 Nativity displays of 12 Latin American countries are on display to Jan. 8. Hours are 10 a.m. to 5 p.m. Monday-Tuesday, until 9 p.m. Wednesday-Saturday, noon to 5 p.m. Sunday through Dec. 24, 210 W. Sixth, Royal Oak.
- XCHIPPILLI GALLERY**
 "Functionalisms" from Propeller Studio, a group of Detroit artists who are doing some highly unusual work are on display through December. Hours are 11 a.m. to 5 p.m. Tuesday-Saturday, 568 N. Woodward, Birmingham.
- LINDA HAYMAN GALLERY**
 Works of art by Neil Loeb are on display through Dec. 15. Hours are 9 a.m. to 6 p.m. Monday-Saturday, until 9 p.m. Thursday and 10 a.m. to 5 p.m. Saturday, 32500 Northwestern, The Courtyard, Farmington Hills.
- ROBERT KIDD GALLERY**
 Clay sculptures by Thomas Lollar are really his impressions of modern architecture and new designs by Bob Noynt refer to Brazilian travels along the Amazon. Continues through Jan. 13. Hours are 10:30 a.m. to 5:30 p.m. Tuesday-Saturday, 107 Townsend, Birmingham.
- LINBURG/BROSE STUDIO**
 Duo retrospective by these two outstanding sculptors continues through Dec. 16. They are being forced to vacate and what started as a sale has become a choice exhibition. Open daily by appointment, 955-1335, 1437 Randolph, Detroit.

Slenczynska benefit to aid quake victims

Concert pianist Ruth Slenczynska will perform works by Frederic Chopin in a benefit concert for the earthquake victims in California. The concert will be presented at 8 p.m. Wednesday in Pease Auditorium at Eastern Michigan University, Ypsilanti.

Tickets are \$10 (\$5 for seniors and students). They can be obtained by calling Quirk Theater box office at 487-1221.

Dr. Slenczynska is the first American woman pianist to celebrate 50 years of professional concerting. She gave her first concert at age 4 in California; she made her debut in Berlin at age 5, and her Paris debut at age 7. Following her New York debut in Town Hall at the age of 8, Olin Downes of the New York Times praised her as the "greatest child prodigy of the 20th century and the greatest keyboard genius since Mozart."

She has been called the "greatest among women pianists today" by the London Times. Slenczynska has performed more than 3,000 recitals and has appeared with most of the world's great orchestras. She studied with Egon Petri, Arthur Schnabel, Alfred Cortot and Sergei Hamaninoff.

Slenczynska was awarded the Polish Golden Cross of merit and is a fellow in the International Academy of Arts and Letters at Geneva, Switzerland. Her dramatic life story has been featured on many television programs, including the "Today Show," and "20/20."

She has also been featured in national magazines such as Reader's Digest, McCall's, and Life. Her discography includes a dozen records for Decca Gold Label and three for Musical Heritage Society. She has written two books, "Forbidden Children" (Doubleday) and "Music at Your Fingertips," (DeCapo Press). Her articles appear regularly in Clavier, Piano Quarterly, and Music Journal. She is also a monthly columnist for Keyboard magazine and is currently artist-in-residence at Southern Illinois University (Edwardsville campus).

The concert at Pease Auditorium is being sponsored by Eastern Michigan University, the Steinway Society of Michigan, Hammell Music Inc. and Littlefield Presbyterian Church, Dearborn.



Dr. Ruth Slenczynska in benefit concert

Sometimes disregard thorn among roses

Q. I have a terrible time selecting gifts for other people. It seems there's something wrong with every idea and I never feel good about what I give.

A. There are various reasons why gift selection is difficult and I can only speculate about yours. Perhaps you approach gift shopping with an expectation of failure. One individual had difficulty choosing gifts for many years after a childhood incident. When she was nine years old her teenage brother wanted a recording by a popular singer. She listened to the record, didn't like it, and bought a polka instead. Although her brother was polite when he opened it, this created a painful memory.

Perhaps you have a critical nature. While this attitude, called Inductive Reasoning) is a talent for certain things, you must learn to control your negativity and be careful not to always find the thorn amid the roses.

Build up your own self-confidence before you shop. Tell yourself that this time will be different, think positive and then follow through. Use catalogs and discuss possibilities with friends or relatives. Stay attuned to others' complaints about what they don't have, write down the idea immediately, and use it when needed.

Keep lists of thoughtful gifts you have received, and then purchase similar items for others. Sometimes

you must tune in to the tastes of the recipient and ignore your own likes and dislikes. Even though he may think it's great, the wife of a fisherman may not appreciate a rod and reel.

If practical, take your recipient along shopping. Although the surprise element is lost, you might both feel better in the end. Don't be too hung up on price, thinking you must spend a certain amount. Set a maximum and then shop all the price ranges below. One woman took her little grandchildren shopping, deciding ahead of time to spend up to \$25 on whatever each child wanted. The boy chose a \$17 item and the girl a \$3 toy. Although she offered them more, the children were delighted and completely satisfied with their gifts.

Gifts of oddities are almost always welcome. Fruit baskets, cheeses, jams and jellies, nuts, etc. make

great gifts. Don't forget tickets to plays, amusement parks or sporting events or gift certificates for dinners or merchandise. Some larger stores offer gift catalogs within certain price ranges. No prices are listed in the catalogs and the recipients merely make their selections at their leisure. Baby-sitting, doing chores or driving a person where they could not go alone might also be welcome.

Don't attach too much importance to your gift selections. With the infinite choices available, it's almost impossible to please everyone. Make the best decision you can and get on with your life. It really is the thought that counts.

Dorothy Lehmkuhl is owner of Organizing Techniques in Birmingham. She does In-House Seminars, speaking and consulting on all aspects of time management and organizing.



organizing Dorothy Lehmkuhl

Artist Gloub Musicales to give Christmas concert

New York artist Leon Gloub will talk about his work at 7 p.m. Tuesday in the deSalle Auditorium of Cranbrook Art Museum. This lecture is in conjunction with the Cranbrook exhibition, "Leon Gloub: The Aesthetics of Power," which is on view at the museum through Jan. 7.

Dealing with issues of aesthetics, politics and the media, this exhibition of six large-scale canvases reveals Gloub at his most provocative.

The artist lives in New York city and holds the John C. Van Dyck Professor of Visual Art position at Rutgers University. He has shown extensively in both the U.S. and Europe. He is represented in major museum collections, including MOMA, the Hirshhorn, the Art Institute of Chicago, the L. A. County Museum as well as collections in Australia and Canada.

The lecture is free with museum admission. Adults, \$2.50; students and senior citizens, \$1.50. For more information, call 645-3323.

Birmingham Musicales will present its annual Christmas Concert at 1 p.m. Thursday, Dec. 14 at Holy Name Church, 645 Woodland, Birmingham. The public is cordially invited to attend the program and the tea after.

The Birmingham Musicales Choral Ensemble under the direction of Mary Pardee, accompanied by Eleanor Whelan, piano, will open the program with a procession, "The Westford Carol."

The program will include Christmas music by Emma Lou Diemer, Eugene Butler, Randall Thompson, Jean Britton, and others.

John F. Callaghan, organist and minister of music at Holy Name Church since 1957, will perform.

Callaghan, born in Oswego, N.Y., received both bachelor's and master's degrees in organ from Crouse College of Fine Arts at Syracuse University. He came to Detroit in 1942 and he has taught at Marygrove College and earned the associate degree of the American Guild of Organists.

Nadine Deleury, cellist, accompanied by Fontaine Laing, piano, will perform three movements from the "Sonata No. 2" by Bohuslav Martinu. Deleury, was born in France, studied

at the Paris Conservatory and the Yale School of Music. She is presently principal cellist with the Michigan Opera Theatre orchestra, a member of the Tuesday, Royal Oak and Birmingham Musicales.

Laing has performed as soloist with Pontiac Oakland and Oakway symphonies and was harpsichord soloist with the Troy Symphony recently.

She recently toured in Germany and performed in Toyota, Japan, Detroit's sister city. Patricia Mills is chairman of the day.

Woodwinds in noon concert

Noontime concerts in the atrium of Civic Center Library in Livonia continue Thursday with the Opus V Woodwind Quintet playing seasonal music and other favorites.

Featured are Lois Swanson, clarinet; Marilyn Van Giesen, flute; Fat VanDommelein, oboe; Janice

Rasmussen, bassoon; and Isabel McIry, French horn.

There is no charge for the concert that runs 12:15-1 p.m. Coffee will be available. Brown-bag lunches are welcome. Co-sponsors of the concert series is the Livonia Arts Commission. The library is at 32777 Five Mile Road.

at the Paris Conservatory and the Yale School of Music. She is presently principal cellist with the Michigan Opera Theatre orchestra, a member of the Tuesday, Royal Oak and Birmingham Musicales.

Laing has performed as soloist with Pontiac Oakland and Oakway symphonies and was harpsichord soloist with the Troy Symphony recently.

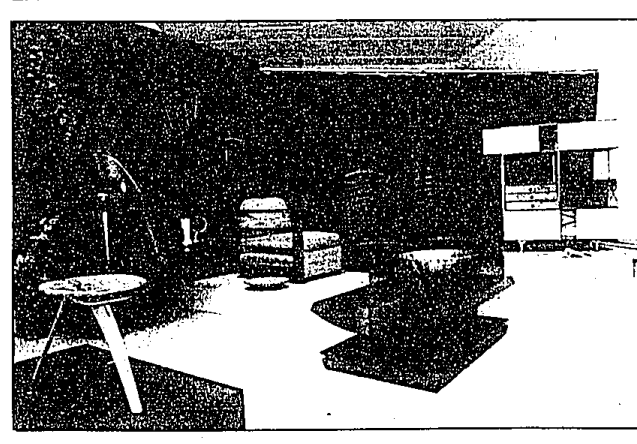
She recently toured in Germany and performed in Toyota, Japan, Detroit's sister city. Patricia Mills is chairman of the day.

'Nutcracker' set

The Plymouth Symphony and the Ann Arbor Ballet Theater will team up next weekend to present the "Nutcracker Ballet," at 8 p.m. Friday and Saturday in Plymouth-Salem High School auditorium, 46181 Joy Road, Canton.

Tickets are \$10 for adults and \$5 for students.

Symphony conductor is Russell Reed. Ballet director is Gail Etry. For more information, call 451-2112.



Artpack offering

Placed at the Wetman Collection holiday show "Objects d'Art" are: a Noguchi chair (left), a Saranin chair, a Charles Crowley silver pitcher, an Ernest Race chair, a Both Forer dish platter, a Gilbert Rhode chair, a pair of C. Logan Scottish chairs, a Charles Eames storage unit for Herman Miller, a Thomas Hucker coffee table with a Ronald Kent wood-turned bowl. The show runs through Dec. 23 at Artpack Services in Farmington. For additional information and gallery hours, call 478-8948.