

the farmington enterprise & observer

Weekend of February 6-7, 1971

YOUR HOMETOWN NEWSPAPER

Vol. 83, No. 36

20 pages, 2 sections

15c a Copy

Sewer Cleaner Now Used For Icemaker

By MARTHA MAHAN

A device which converts the city's sewer cleaning machine into an icemaker for Farmington's three public skating rinks has been invented by a 15-year city employee, John Overfield.

It reduces both manpower time and water use over 75% according to Public Works Director David L. Jones, and produces a better skating surface as well.

OVERFIELD, who lives at 20218 Floral, Livonia, is a foreman with the City of Farmington's water and sewer division.

He got to fiddling around with the icemaker idea after one of his men was injured and insufficient manpower forced icing the rinks to be done overtime.

Overfield came up with a 10-foot length of 1 1/2 inch pipe dotted with quarter inch holes. He attached it to form a "T" coming off the plastic hose which feeds out the water from the machine's 1,100 gallon water tank.

A handle in the middle

reaches about 2 1/2 feet across the ice. A wheel is fastened to each end of the pipe.

Grabbing the handle, a man pulls the device across the ice, and the machine pulls it back, Jones explained. It lays an "almost perfect" one-half to three-eighths inch of water.

"You go back and forth over the rink in 10 foot swaths, and the thin coating is frozen by the time you get to the end," Jones enthused. "Go over it twice, and it's as slick as a pane of glass."

"It worked perfectly the first time we used it," Jones said. "And with the wheels, you can pick up the round corners."

CONTROL of the water under the old hose system was just about impossible and left a lot of ripples, the DPW director went on. A lot of water was lost, too, he said. The sewer cleaner has finger tip control for water pressure which assures an even layer.

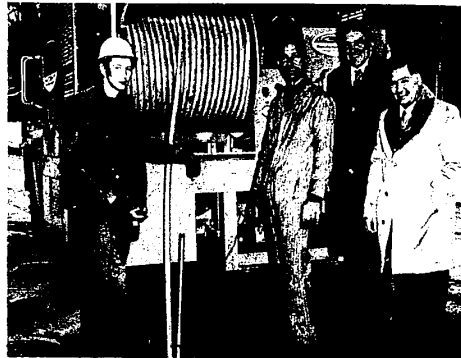
"It cuts man hours down to about 25% of normal time with hoses," Jones declared.

"It used to take about two hours for a man to surface one of the small rinks at Flanders or Cloverdale School and twice as long for the big rink at Farmington High. He had to stand out there with his hands frozen, then bring the hoses back and dry and clean them. Now, the only water used goes right on the ice and we don't have to worry about fire hydrants and dragging a hose from the hydrant to the rink."

"Instead of the usual two hours to cover one of the smaller rinks, we did one in a half-hour the other day." The thin water coating also freezes faster than the old hose method.

"It used to be a man would go out around 10 p.m. and have to stand around until midnight keeping people off the rink while it froze solid," Jones said. "Now we can freeze the surface under any temperature in about an hour."

Overfield hasn't patented his water spreader. "We've kidded around," Jones said, "but he hasn't done anything about it."



SUPER SEWER CLEANER — The new sewer cleaner, the Sewerking, purchased by the City of Farmington, has arrived and is being put to use. The equipment, mounted on a truck, cleans sewers by dropping a hose into the sewer instead of the antiquated system of using bucket scoops. Shown above are (left) city employees Jim Bennie and John Overfield, City Manager John Dinan and David L. Jones, the city's new director of the Dept. of Public Services. (Evert photo)

Harrison Elects Council

Harrison High School's first student government is now in operation. A bicameral unit, it is composed of a 31-member

senate and a house of representatives with 40 members.

Senate co-chairmen are Wiley Chan and Benny Rudner. Secretary is Debbie Alegani. Co-chairmen of the house are Kevin Kalme and Kurt Heiss. Its secretary is Carol Gully.

Student Council treasurer is Pam Fletcher, and parliamentarian is Ed Frankel.

Committees already formed include one for setting up a constitution, a free school committee to look into a variety of student-taught classes during study hall, a dance committee, one to in-

vestigate rescheduling of study halls, and a ring committee to be responsible for class ring decisions.



At the Center

"Modern Painting from Impressionism to Surrealism" is the new course being offered in the Farmington Community Center beginning Wednesday, Feb. 3. There will be six sessions from 10 to 11:30 a.m.

Among the artists to be discussed are Manet, Monet, Cezanne, Van Gogh, Gauguin, Matisse and Picasso. Elizabeth Allen Defoolley will conduct the class.

Her experience is as follows: B.A. Smith College; M.A., University of California at Berkeley; junior curator, 1968-69 at Detroit Institute of Arts; assistant curator, Akron Art Institute, 1967-68. The charge for the course is \$15.

AFTERNOON OF ART: Make reservations by Jan. 30 by calling the center at 474-6873 or 474-2990. The date is Feb. 17 and the agenda is as follows: Leave the center at 11 a.m. in chartered bus, luncheon at 12:15 at the museum, then a guided tour on "Treasures of American Art." All inclusive for \$4.50 per person. The group re-

turns to the Center by 3:15 p.m.

Social dancing for young people begins on Wednesday, Feb. 3, 7-8:15 p.m. This course will include both new and traditional dance steps with attention to social etiquette which will add a good time for both boys and girls grades five through seven for 10 sessions. That same evening, an adult ballroom dancing class will be given. Both classes will be taught by Ricky Dove.

Get a group together for the monthly bridge party which will be held Feb. 10 from 10 a.m. to 2:30 p.m. Luncheon is served plus prizes for first and second high score. Charge is \$3 per person. Get in those reservations by calling the center by Monday, Feb. 8.

Honor School

Farmington High School art department won recognition with presentation of a national citation. The award was made for the work of Kip Anderson submitted to the National High School Art Exhibition.



SUPER ICE-MAKER—Arnold Kromberg of the City of Farmington's Department of Public Services demonstrates how the new sewer cleaner, the Sewerking, can be used for making ice rinks by hooking it up to the above rig which

sprays a fine, even layer of water on the ice. The Sewerking cleans sewers with water pressure and the city has converted it for additional use to make ice rinks. (Evert photo)

what's inside

- Amusements 8A
- Churches in Action 10-11A
- Classified Want Ads Sec. B
- Sports—Prep and Pro 12A

RESULTS make one newspaper's want ad department different from another's



YOU can experience this difference any week in the year with an **OBSERVER WANT AD**

522-0900

Schools Name Half Of New Citizen Council

Former Board of Education Trustee Richard Frankel leads a partial list of 26 persons named to the reactivated Farmington Citizens School Advisory Council. Membership will total 50.

Mrs. Lillian Allen, former president of the Farmington Council of PTAs, is another appointee.

TRUSTEE Aldo Vagnozzi, chairman of the board's public relations committee, said names of the remaining members likely will be announced at the next board meeting.

The council held its first meeting on Feb. 2, in the school administration offices.

Membership is made up of one representative from each elementary school, two from each secondary school, one student from each secondary school, one appointee for each board member, and three school administration appointees.

Names were solicited from principals, the school administration and volunteers, Vagnozzi said.

FRANKEL WAS picked by Trustee Gary L. Lichtman who called the former board member "most dedicated to the schools."

Named to the council were: Mrs. Ruth Allaben, Alameda School; Mrs. Carol Freedman, Bond; Richard Levinson, Eagle; Mrs. Myra Kruger, Fairview; Jack Kelly, Flanders; Roger Bisschop, Forest; Eli Markovich, Highmeadow; Gary Robertson, Kenbrook and Mrs. Winifred Clayton, Larkshire.

Also: Mrs. Jesse Corliss, Longacre; Mrs. Roxanne Blackmer, William Grace; Mrs. Ann Rodewig, Wooddale; Carl Weiti, Farmington High; Richard Pryor, Harrison High; Mrs. Betty Monahan, North Farmington High; George Saddington and Richard L. Justice, Duncle.

And: Mrs. Gerald Breneman, East Junior High; Mrs. Ethel Begian, Farmington Junior High; Mrs. Carol Kennedy, Power Junior High; Mrs. Arlene Bittker; Keith Deacon; Charles Van Dusen; and Glenn Timham.

IT'S THAT TIME AGAIN



- BRING:
- TITLE
 - APPLICATION
 - PROOF OF LIABILITY INS.

1971 Michigan License Plates

on sale now thru March 31st

SPECIAL EVENTS CENTER, NORTHLAND CONCOURSE

9:30 AM. to 9:00 PM. Monday thru Saturday



NORTHLAND CENTER MERCHANTS ASSOCIATION

Northwestern at 8 Mile & Greenfield Roads

IF THE HOUSE NEEDS FIXING

don't let
money stand
in the way

Add a room, get that new roof, fix up paint up...now's the time to plan and start any of those home improvements you've been thinking about. Whether you do it yourself (and need the money for materials), or use a contractor...the money you need is at Metro. See us for a prompt loan with low bank rates and convenient repayment plans.

METROPOLITAN BANK

farmington

MAIN OFFICE: 33205 Grand River Ave. (near Farmington Road)
QUAKERTOWN: 27500 Farmington Road (near 12 Mile)
REDFORD: 25719 Grand River (near Beech Daly)