

3 up for 2 spots in C'ville school board race

Clarenceville school district residents will elect two trustees and vote on a Headlee Tax Limitation Amendment waiver request in the annual school board election Monday.

Polls will be open from 7 a.m. to 8 p.m. The district includes southeast Farmington Hills.

Candidates for two four-year terms on the Clarenceville school board are four-term veteran Daniel Morrison, one-term member Linda Brandemihl and challenger George Empey.

Assessments in Clarenceville have gone up by about 7.8 percent. The Headlee Amendment to the Michigan Constitution provides that school districts cannot collect added income through assessment hikes that are higher than the increase in the cost of living without a vote of the people.

With the cost of living increase at 4.8 percent, the Headlee waiver, if approved, would allow Clarenceville to collect 3 percent of the added income from increased assessments above the cost of living, said Ralph Skrocki, assistant superintendent for business.

The school board already has held a Truth in Taxation public hearing to allow the district to capture added revenue from increased assessments up to the cost-of-living.

Clarenceville has a total school

Clarenceville

The district includes parts of Livonia, Redford and Farmington Hills.

levy of 44.15 mills. Of this, the operational levy is 41.4 mills (\$41.40 per \$1,000 of state equalized valuation).

Based on current assessment information from Livonia, Redford Township, and Farmington Hills, the district must roll back its millage by 0.141 mill (14 cents per \$1,000 SEV). For the owner of an \$80,000 house, passage of the Headlee waiver would result in increased taxes of \$5.60 per year, said Skrocki.

LAST JUNE, Clarenceville residents also waived the Headlee roll-back requirement.

As required by law, the school board has reduced the debt levy by 1.5 mills. For the owner of an \$80,000 house that amounts to a savings of about \$60 a year, said Skrocki.

For the district, approval of the waiver will add a cushion of about \$20,000, said Skrocki, who added that Clarenceville is facing a possible major added expense if the Michigan Legislature requires it to pay

F.I.C.A. payroll deductions for employees, a cost now borne by the state.

Last year, total SEV in Clarenceville increased 10.8 percent. There was a total of \$4.8 million losses in the assessment roll and gains of \$7 million in growth. Inflation was 4.1 percent.

The Headlee formula if applied last year would have allowed the district to collect only 94.79 percent of its 41.4 operational levy. The millage would have been rolled back to 39.243 and the district would have not collected additional income of \$44,000.

This year, total SEV in Clarenceville has increased by about 7.8 percent. Losses are at \$4.5 million, growth is \$10 million, and inflation is 4.8 percent. The Headlee formula, if applied this year, will allow the district to collect 99.652 percent of its total operational levy of 41.4 mills or 41.259 mills. If Headlee is waived, the district will collect an additional \$30,000.



Daniel Morrison



Linda Brandemihl



George Empey

THE STAR IS BACK!

THE BEST VIEW OF THE DETROIT SKYLINE IS SEEN FROM A STAR

Treat that someone special to the best view of the Detroit and Windsor skylines. Enjoy terrific food, live entertainment, fantastic service and a great time.

The Star is the perfect setting for any occasion

The Star Specializes In

- Anniversaries • Birthday Parties
- Customer Appreciation Dinners
- Christmas Parties • Employee Parties
- In-Home Cruises • Weddings
- Reunions • Groups of Any Kind

Major Credit Cards Accepted

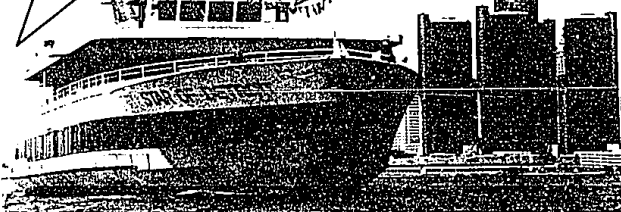
Gift Certificates Available

Groups 25 or More Call

259-9160

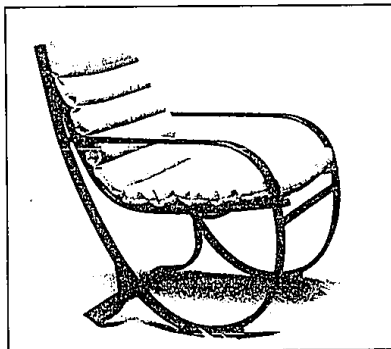
Gift Certificates Available

CALL 259-9161 for reservations



King for a Day

Treat your Dad like Royalty



BROWN JORDAN

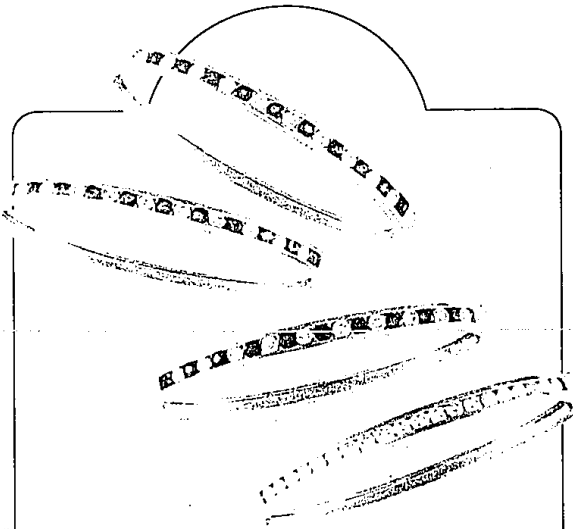
SUMMER SALE!

Buy your dad the best in outdoor and casual furniture, but don't pay a king's ransom. The distinctive design of Jay Spectre will make your dad's home feel like a castle. Come & see our complete selection of chairs, lounges, hammocks & many other unique Father's Day gifts.



Livonia • 522-9200 • 29500 W 8 Mile Rd.

Birmingham • 644-1919 • 221 Hamilton • Novi • Opening In June • 48700 Grand River • 348-0090



Save \$600 on Our Exclusive Diamond Bangles, Now through June 30

ALL DIAMOND, OR DIAMOND & EMERALD, NOW ONLY \$2495

DIAMOND & RUBY, OR DIAMOND & SAPPHIRE, NOW ONLY \$1995

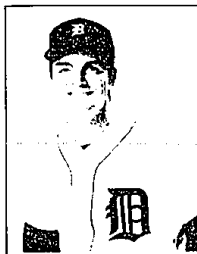
Celebrate June's special occasions with one of our best values, set in 18 karat gold. Now through June 30th. Available interest-free with only 20% down on our club plan.

CHARLES W. WARREN
JEWELERS SINCE 1962

SOMERSET HALL, (313) 649-3411 EASTLAND

Frank Tanana, Pitcher with the Tigers, says:

"Make your home base Carrier comfortable"



"If your home life and family's comfort is as important to you as it is to me . . . do what I did . . . choose Carrier quality for your home!"

CALL THESE LOCAL CARRIER DEALERS

WEST BLOOMFIELD
Otto A. Trzos Company
682-3100

UNION LAKE
Matheson Heating & Air Conditioning
363-4868

TROY
Parent Heating & Cooling
528-1010

SOUTHFIELD
Summerset Cooling & Heating
358-3110

ROCHESTER HILLS
A&S Heating & Cooling
852-5515

PONTIAC
O'Brien & Gary's Heating
674-4679
Linz Heating & Cooling
939-0780

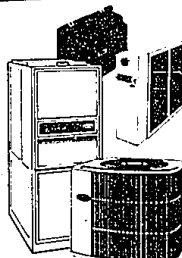
NOVI
Selective Heating & Cooling
348-8633

LIVINGSTON COUNTY
AAA Service Network
227-1050

CLARKSTON
J&J Refrigeration Co.
625-2974

BIRMINGHAM
M.F. Downs Engineering
642-1882

Get up to \$300 REBATE RIGHT NOW



Get state-of-the-art quality, performance & reliability with all Carrier products.

THE WEATHERMAKER® SX GAS FURNACE QUALIFYING MODELS—58SX, 58DX, 58DHC, 58SSC, 58SXB

HIGH 2000 DELUXE CENTRAL AIR CONDITIONER QUALIFYING MODELS—38TH/DL, 38TK/DL, 38XD

HUMIDIFIER 5 Year Limited Warranty
ELECTRONIC AIR CLEANER 5 Year Limited Warranty on electrical components

*Hurry - this is a limited time offer... Applies only to the purchase of both a qualifying air conditioner and gas furnace

3E DOLLAR PER DOLLAR NATIONAL GAS OFFER 1 YEAR TO THE PRICE ADVANTAGE OVER ELECTRICITY



We're not comfortable until you are.