

Building Scene

CLASSIFIED ADVERTISING

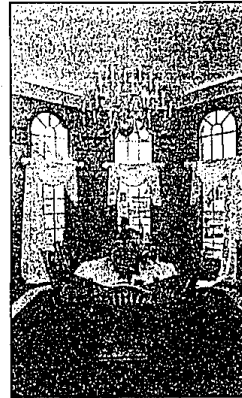


Marilyn Fitchell editor/591-2300

Thursday, June 14, 1990 O&E

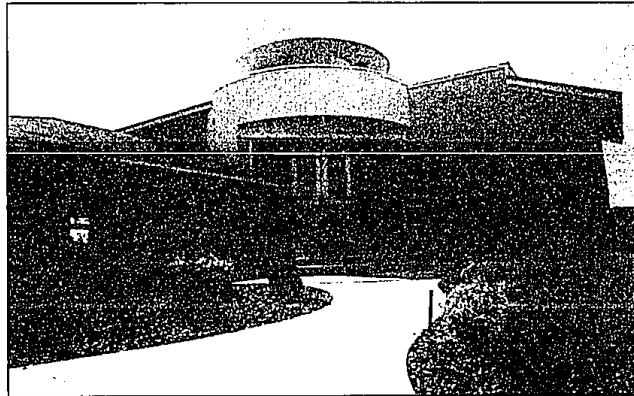
★ 11

HOMEARAMA



photos by DOUG SUSALLA

Clockwise from left: Kingsley Estate, by James Joseph Enterprises of Rochester Hills; octagonal-shaped formal dining room in the Contessa by Lini Homes, Lake Orion; contemporary Bolaire by Sgrol Construction Co.; Bradford by Baypointe Homes, Rochester Hills.



Idea showcase opens

What's new at the spring Homearama now through July 8 in Shelby Township?

Among other things, a cedar spa room with hot tub, a great room with a 17-foot ceiling, a master suite with a pyramid ceiling, a contemporary home with seven levels plus a trend toward libraries.

"Most people who come through Homearama have no intention of buying homes. They're borrowing ideas," said Peter Logan, a publicist for the Builders Association of Southeastern Michigan, the show's major sponsor.

Rochester builder James Rutkowski and Paul McGillivray are among 10 who constructed homes for public viewing in the Pheasant Run Subdivision.

McGillivray, president of Baypointe Homes, has built a 3,600-square-foot house with four bedrooms and 2½ baths designed by Russo/Bennett Associates.

"It's a nice, open floor plan," McGillivray said. "It gives you good living areas with an outside patio and a spa room right off the day room."

THE MASTER bedroom/bathroom suite is on the first floor, three other bedrooms upstairs.

The spa leads to the day room, which leads to the kitchen/snack bar, which in turn leads to the great room.

The great room has a fabricated fireplace, a 17-foot ceiling and a wet bar near the kitchen.

"One thing we did there was get away from decks," McGillivray said. "We feel that was something for the '80s. We feel patios and paver stones are a trend for the '90s."

The house, lot, fixtures, other decorative touches and landscaping carries a price tag of \$389,000.

Rutkowski, president of Masterpiece Homes by James Joseph Enterprises, has designed and constructed a 3,300-square foot house with four bedrooms and 2½ baths.

"IT'S A VERY adaptable floor plan," Rutkowski said, adding that he intends to mass produce the model.

The dining, media and family rooms can be oriented differently depending on the mood of the buyer.

The media room features a built-in surround-sound system and big screen TV. "Kids can have their Nintendo game in there or a home computer," Rutkowski said.

A circular staircase leads upstairs. The master bedroom suite is downstairs, the other three bedrooms up. A large study/den is just off the front entrance.

The house is priced at \$349,000. Perhaps the most unusual model in the show is The Bolaire, a contemporary house of 3,000 square feet designed by Guy Ciccamo and built by Frank Sgrol of Sterling Heights.

'One thing we did there was get away from decks. We feel that was something for the '80s. We feel patios and paver stones are a trend for the '90s.'

— Paul McGillivray

GOING FROM one level to another — there are seven in all — almost gives the impression of different levels on a cruise ship.

Skylights can be found in the master bedroom, solarium and kitchen. Southern windows in the family room, dining room and kitchen provide sunlight throughout the day. Circular concrete steps rise to the front door of the house from the sidewalk.

"The Jacuzzi is right in the bedroom," Sgrol said. "You see that in Hollywood movies, in presidential suites, but you never see it in homes. To me, that's new and exciting."

"The kitchen is different. The cooking area is in an island, not up against the wall," he added.

The large basement is divided into several sections with high walls. One observer suggested that you could play handball there.

"I WANTED to try something that was totally different. It was a challenge," Sgrol said.

His asking price is \$365,000 to \$375,000. Interesting features provided by other participants include:

- A pyramid ceiling with chandelier in the master suite built by Dwight Parsley of Roseville.
- An open, high-ceiling design with loft and bridge overlooking the main floor built by George Lini of Lake Orion.
- The trend of several builders including Gaetano Rizzo of Mount Clemens, Anthony Chirco of Mount Clemens, Rutkowski and McGillivray to put libraries or studies in their models.
- An inlaid brick carving of a barn above the kitchen fireplace to carry out the country theme in the Weatherlane model by Gemcraft Homes of Mount Clemens.
- The Pheasant Run subdivision is east of Schoenherr between 11 and 22 Mile roads.

Show hours are 3-11 p.m. weekdays, noon-11 p.m. weekends and holidays. Tickets are \$5. Discount tickets at \$4, good only Monday through Friday, are available at Detroit Edison and Standard Federal Bank branches.

PICTURE YOURSELF LIVING AT HUNTER'S POINTE FOR ONLY \$75,900

With careful planning and excellent design we've created a work of art at Hunter's Pointe Condominiums. These luxuriously elegant and affordable condominiums are selling at an unbelievable price. So hurry in and visit our masterpiece community today!

<ul style="list-style-type: none"> • Attached Garage • Private Entrances • Private Patios • Full Basements (optional) • First Floor Laundry 	<ul style="list-style-type: none"> • Walking Distance to Numerous Shops and Restaurants • Fireplace (optional) • Central Air • Range and Oven 	<ul style="list-style-type: none"> • Extensive Landscaping • Automatic Lawn Sprinklers • Lawn Care and Snow Removal • Dishwasher and Disposal
--	---	---

"The Golden Corridor" of The Westland-Canton Area
Ranches and Townhouses
Located on Hunter Ave.
1 block west of Warren,
2 blocks south of Ford Rd.
595-9100

Hours: 12-6 Daily • Weekends 11-6 • Closed Thursday

HUNTER'S POINTE
condominiums