

HOME IMPROVEMENT TIME

- ★ MODERNIZE THE BATHROOM
 - ★ FINISH THE ATTIC
 - ★ FIX-UP YOUR KITCHEN
 - ★ JAZZ UP THE BASEMENT
- ...and save with Salem prices!

3 Parks In Area Get OK

Three park projects in Observersland, along with more than \$300,000 in state financial help, have been approved by the state Department of Natural Resources.

The largest is Redford Township's request for nearly \$273,000 to purchase and develop 13.3 acres for Capital Park near Plymouth and Inkster roads. The funds come from the state recreation bond issue, approved by voters in 1966.

The other two projects are smaller parks in Canton Township. One was a request for \$13,175 for land acquisition for a township park, the other \$7,175 for land for a neighborhood park.

The DNR's approved list goes next to the Legislature, where approval is expected as a matter of routine.

THE LEGISLATURE has already approved payment for two parks and an athletic field in Livonia at a cost of \$210,000 and a City of Farmington request for \$26,345 for park development. These are under way.

While these projects were being approved, the DNR turned down two other requests from the City of Livonia. The first was to acquire five acres adjacent to Ford Athletic Field at a cost to the state of \$48,000, and the second for the purchase of 5.5 acres next to Grandview Elementary School for \$40,000.

The addition to Ford Field was rejected because it did not meet the criteria of location of the site in a high-density and low income area.

The Grandview school site at 19184 Louise was rejected because of its location.

STRANGELY, there were no programs submitted by other segments of Observersland Farmington Township, Plymouth Township, the City of Plymouth, Garden City or Westland.

By far the biggest project now under way is Capitol Community Park in Redford Township. The plans call for the development of a lighted softball diamond, a lighted hard ball diamond, shuffleboard and horseshoe courts along with a combination tennis court and ice skating rink.

The City of Livonia was not alone in having part of its program rejected.

The City of Northville was denied a request for \$200,000 to help purchase Maybury Sanitarium for a total cost of \$600,000. It was rejected because the city's allocation for a fish hatchery for Fish Hatchery Park previously had been approved.

APPROVAL of the two Livonia projects will add 53 acres to the city's recreational layout.

The first of these new projects calls for development of 38 acres adjacent to the projected fifth senior high school, and the other is a 15 acre plot which is to be developed later as a playground for baseball, football, playground and picnic area.

The Department of National Resources also sounded a warning that all funds approved were reserved for local governments during the first two years of the program.

Any grant money not allocated to approved projects prior to July 1, 1971 will be placed in a "regional" fund from which grants may be made for any project within the area. After July 1, they will be placed in a state fund.

Ford Plants Earn Awards

Two Ford Motor Co. plants in Livonia have won awards in the industrial division of the National Fire Protection Assn.'s (NFPA) 1970 competition.

The Livonia Transmission Plant and the National Parts Depot picked up awards for placing in the top 30 of 135 North American organizations competing in the industrial division.

The NFPA is a non-profit organization founded in 1896. It promotes the science of and the methods of fire prevention and protection. It has over 23,000 members in 79 countries.

PANELING

WHY BUY 8 FT. WHEN 7 FT. PANELS WILL DO?

Select from over 3000 sheets of 7' paneling...in stock! Also big selection of 4 x 8' panels!

ABITIBI

4x7x1/4" thick sheets...choose from

- Sawmill Silver Oak
- Avocado Pecan
- Salem Cherry
- Premium Walnut

\$5.95 cash & carry

- ★ New wide groove styling
- ★ Each sheet individually wrapped
- ★ While 1000 sheets last

New ideas in our **DECORATIVE CENTER!**



Now... make your home as fresh and exciting as a new one... with some of our hundreds of decorator hints! Don't move... improve. See our all-new decorating center with hundreds of ideas in new materials and high fashion color schemes. We have the actual products in use so you can touch, look, compare, plan... fix up your home the do-it-yourself way... and save!

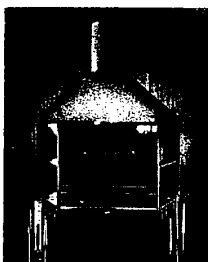
Practical Beauty... Dark Walnut Shelves!

- Hi-Dap plastic laminated
- Solid chip care edge bonded 1/4" thick
- Skin packed for your protection.

Chart is price per shelf

WIDTH	LENGTHS			
	24"	30"	36"	42"
6"	1.60	2.00	2.40	3.00
8"	1.70	2.65	3.20	3.85
10"	2.15	3.30	4.00	4.70
12"	3.20	4.00	4.80	5.60

NOW... ENJOY OUTDOOR COOKING FUN... INDOORS!



Take home your Gourmaid Indoor Charcoal Grill!

\$139.95

Avocado or Poppy Red complete with Electric Rotisserie — Easily Installed

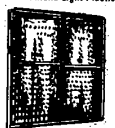
SALEM LUMBER CENTER

YOUR NEIGHBOR SHOPS HERE

Visit our LIGHTING FIXTURE SHOP

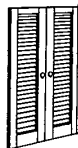


SHOWER and TUB ENCLOSURE



\$28.88

Diamond light plastic in Amber, Green, or Clear... made to withstand severe impact. Meets or exceeds AAMA-FHA spec. others as low as **24.88**



Ready-to-finish **White Pine Louvered Shutters and Shutterettes**. Louver or Fabric Frame Styles. American made movable shutters add the finishing touch to kitchens, bathrooms, living rooms. Ready to finish to your taste. Custom cutting while you wait **25¢**

A CEILING HAPPENING

...all this week. Come and save money on Armstrong's finest suspended ceiling!



Illustrated: Pinehurst Design, slightly higher



SUSPENDED CEILING

Choose from 2 styles of 2x4 panels

- Conestoga
- Woodcrest
- Plain White

Put a new ceiling in the average room over the weekend...YOURSELF! Price includes all materials...metal, hanging fixtures and tiles. Easy.

25¢ sq. ft.

Finish off that room with Armstrong's rugged WOODSTOCK PANELING

- 4x8 panel... full 5/16" thick
- rugged dark hand-hewn texture

\$3.99 sheet CAC

TRUCKLOAD SALE... CEILING TILE



Warm textured two-tone beige

First line acoustical, textured ceiling tiles. Tongue and groove beveled edge for easy installation with professional results. 60 pieces to carton.

Non-combustible rating...

FULL CARTONS ONLY

\$8.40 carton of 60 pieces

NO LIMITS!

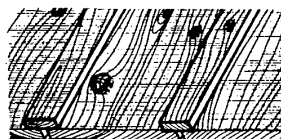
LUMBER SPECIALS!

Re-sawed Rough Pine Boards

7-8-14-16 FT. LENGTHS

12" wide **18¢** lin. ft.

Ideal for rugged rec. room, board and batten effect or false beams.



ECONOMY 2x4

- 7 FT. lengths... 49¢
- 8 FT. lengths... 59¢

FURRING (full value)

- 1x2-8 ft. (1 5/8" wide) 20¢
- 1x3-8 ft. (2 5/8" wide) 28¢

SHEET ROCK

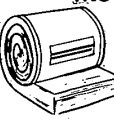
- 4x7-3/8" thick... 11¢
- 4x8-1/4" thick... 11¢

NO. 2 K.D. WHITE WOOD

length	2x4	2x6	2x8	2x10	4x4
6'	.49	.80	1.25	1.60	1.50
7'	.79	1.05	1.45	1.87	—
8'	.89	1.04	1.65	2.15	2.00
10'	.99	1.19	1.87	2.50	2.50
12'	1.29	1.79	2.49	3.20	3.00
14'	1.49	2.10	2.89	3.74	3.50
16'	1.76	2.40	3.29	4.27	4.00

INSULATION SPECIALS!

FOIL BLANKET INSULATION

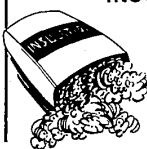


Aluminum foil one side, covers 50 sq. ft., 4 in. thick!

\$3.69 roll

Hurry! No Limit!

ROCKWOOL INSULATION



Average Coverage per bag, 3" thick over 25 sq. ft.

\$1.49 bag

HOURS:

Monday through Friday 9 a.m. - 9 p.m.
Saturday 9 a.m. - 5 p.m.
Sunday 10 a.m. - 5 p.m.



Home of Old Fashioned Service — Ph. GA 2-1000

30650 PLYMOUTH ROAD 3 Blocks west of Middlebelt