

# Schoolcraft Sets Schoolcraft Eyes Tax Talk By Nader Hike Vote For Sept. 13

Ralph Nader, the young attorney who has crusaded extensively in behalf of the American consumer, will speak at Schoolcraft College on Thursday, Feb. 18.

Nader's appearance at Schoolcraft is scheduled for 8 p.m. in the Waterman Campus Center. His announced topic will be "Consumer Problems and Corporate Responsibility." He is being sponsored by the college's cultural affairs committee.

Admission to college students and staff is free. Other students are charged \$1, and the general public is charged \$2 at the door.

Nader, two weeks shy of being 37, is a native of Winsted, Conn. His undergraduate degree is from Princeton and he was awarded a law degree by Harvard. He has published extensively and has spoken throughout the country about problems plaguing consumers which he feels could and should be corrected by manufacturers.

Nader originally was concerned with traffic safety problems and automobile de-



RALPH NADER  
At SC Thursday

sign. He says his interest in this area was "simple gut aversion to the needless death and maiming of hundreds of thousands of people annually."

As an attorney, Nader says, "Instead of doctors patching and lawyers compensating, both should work toward prevention of the casualties in the first place."

By R. T. THOMPSON

Taxpayers in the five northwest Wayne County communities supporting Schoolcraft College will be asked to approve a one-mill hike in a special election on Monday, Sept. 13.

That was the informal decision of the Board of Trustees in a special meeting on Feb. 10 called for the purpose of deciding the election date after receiving the proper resolution from the board's legal counsel. The formal decision will be made Feb. 24.

The trustees have been toying with the idea of a request of an additional one mill but couldn't agree on a date. They didn't waste any time in making the big decision in the special session at which the needs for additional funds were reiterated by the administration.

CITING increasing enrollment, general rise in the cost of doing business and the rising cost of developing the campus master plan, phase

two, the trustees decided to put the matter before the voters as quickly as possible.

With an election for three board posts slated in June, it was the unanimous decision to place the millage proposal in a separate special election in September.

The opinion was that only one issue on the ballot would have a better chance of passing than a proposal combined with millage requests from several of the school systems in the five college districts.

Vice President Kenneth Lindner, in charge of the college's business affairs, told the trustees in the January meeting that a decision should be made as soon as possible since a request for a millage election must have the approval of the Michigan Municipal Finance Commission.

"At the present time," said Lindner, "it is taking as long as 60 days to get the approval. A delay in a decision by the board could mean that it would present its resolution at a time when the commission is swamped, and then the approval could be delayed longer than 60 days."

AT THAT meeting the board passed a resolution asking counsel to prepare the necessary papers for presentation to the Municipal Finance Commission.

## Enrollment Soars At SC

Preliminary tabulation by Registrar Norman Dunn indicates Schoolcraft College has enrolled a record number of students for the winter semester which started Feb. 8. Now in the "drop-add" phase, final counts will not be available until next week.

Dunn estimates the enrollment will be between 5,100 and 5,200. If the figure holds, it could represent as much as a 10 per cent increase over the 4,763 who attended during the 69-70 winter semester.

"Tax Reform Act of 1969" will be discussed at a meeting of the Detroit chapter of National Assn. of Accountants in Detroit's Pick-Fort Shelby Hotel.

The meeting will begin at 5:45 p.m. on Thursday, Feb. 18. The speaker will be Steven Uzelac, a partner of Miller, Canfield, Paddock & Stone.

At present, Schoolcraft is levying 1.77 mills for debt retirement and operation funds. The additional mill would boost that figure to 2.77, a hike of more than 55 per cent.

Prior to making the election decision, the board studied a report from its financial advisors which indicated bond issues needed to finance the second phase of the campus building program could be supported by an additional mill.

The report suggested that the state equalized property valuation for the college district has been growing at the rate of eight per cent annually.

## 5 Industrial Parks Get Top Ratings

Five local industrial parks located in Farmington, Livonia and Plymouth Township, were given top ratings in current drive to lure new industry into Michigan.

The parks were among 47 industrial parks which had been reviewed by officials of the Commerce Department's Office of Economic Expansion and the Michigan Professional Industrial Development Association.

The top rated parks are the Farmington Freeway Industrial Park, Globe Industrial Subdivision in Livonia, Livonia Industrial Park No. 1, Plymouth-Levon Industrial Subdivision in Livonia, and Gould Industrial Park in Plymouth Township.

Twenty-seven parks in Michigan were given top ratings, six were given the second rating, and 14 received the lowest ratings. The parks are described in detail in a booklet published by the Michigan Department of Commerce which is being distributed to industrial retailers, manufacturers, public utilities and other prospective park residents throughout the nation.

## Schoolcraft Will Host Prof-Poet

Thomas Fitzsimmons, poet-in-residence and professor at Oakland University, will speak and give poetry readings at Schoolcraft College throughout this week.

He will discuss "Poetry, Meditation and Awareness" at 8 p.m. Thursday, Feb. 18 in Room D100 of the Physical Education Building. His books are "Meditation Seeds," "Morningdew," and "Downside."

## Pancakes By Botsford

On Sunday, Feb. 21, the Botsford School's Boy Scout troop will hold a pancake breakfast at the Odd-Fellows Hall, 20911 Inkster Road, Farmington one block north of Eight Mile Rd., from 8 a.m. to 12 noon.

Cost is \$1 per person or \$4.50 per family. The breakfast is sponsored by the Botsford PTA.

## Nutritionist At Grandview

Miss Katharine Hess, Oakland County nutritionist, will speak to interested parents regarding nutrition as it relates to physical fitness on Thursday, Feb. 18, in the Grandview Elementary School multi-purpose room starting at 7:30 p.m.

Miss Hess's topic will be, "In To Be Thin - Out To Be Stout." This will be the first in a series of talks regarding physical fitness.

Following the talk will be a question and answer period.

## Pioneer Plan

The Mayflower Compact was the first written plan for self-government in America. It was signed aboard the ship, Mayflower, before the new colonists built their settlement at Plymouth.

## McDonald To Talk

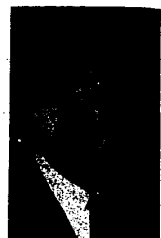
U.S. Rep. Jack McDonald (R-Farmington) will be the guest speaker at the 19th District-Wayne annual celebration of Lincoln Day.

McDonald, who represents the 19th District including Livonia, Redford Township and Farmington, will talk at the annual dinner-dance which will begin with a cocktail period at 7:30 p.m. Monday, Feb. 22, in Thunderbird Inn, 14707 Northville Road.

Dinner will begin at 8 p.m. The dinner is sponsored by the 19th-Wayne Republican committee with Mrs. Marion Donaldson and Arthur H. Garth as co-chairmen.

Reservations can be made by calling the ticket sales chairman, Pat Duggan at GA2-5900, Marvin Pridgen in Livonia at 261-5311, or Jay

Hughes in Redford at 535-3508. The donation is \$17 per couple.



REP. JACK McDONALD

## "IF" ...

Donald W. Smith  
DISTRICT MANAGER

If you have to say it, it's too late to do anything about it. The time to protect your future income against the expense of accident or sickness is before it happens. Let me help you take the "if" out of your future with a complete income protection program. Call me today.

453-8900 or 437-5915  
903 WING STREET  
Plymouth

Representing  
WOODMEN ACCIDENT  
and LIFE COMPANY  
THE FARMER AUTO AGENCY



Printing While-You-Wait  
FROM YOUR ORIGINAL

• LETTERS • PAMPHLETS • FORMS  
• RESUMES • BROCHURES • STATIONERY  
• BULLETINS • CATALOGS • MULTI PAGE BOOKS

100 COPIES \$3.80 1000 COPIES \$9.25

8 1/2 x 11 • BLACK INK • ON 20" BOND

KWIKIE DUPLICATING CENTERS

SOUTHFIELD FARMINGTON LIVONIA  
2215 Telegraph Rd. 2224 Grand River Ave. 34723 Plymouth Rd.  
1 Bk. South of 9 Mile Rd. 1 Bk. E. of Farmington Rd. 1 Bk. East of Wayne Rd.  
Phone: 444-5069 Phone: 478-0190 Phone: 422-1880

FACTORY-SPONSORED  
**Magnavox**  
ANNUAL SALE  
SAVE \$100  
TAC COLOR TV  
• NEW Total Automatic Color  
• NEW Ultra-Rectangular Screen  
• NEW Ultra-Bright Tube

Enjoy today's biggest picture on the color TV with the built-in memory! Search channels, set the scene change-Magnavox TAC will always remember to keep best focus locked and picture sharp! Auto-matic? No more juggling up to adjust controls. No more green or purple fringes! Auto-focus the new and best 21 1/2" screen in new double corners and a flat surface for greater viewing and with clearer, sharper pictures with less glare. It's the most flexible TV in the industry. Even sent to the stores for a more screen! Quick On pictures and sound as well as Chromastore for depth and color. Also add to your enjoyment. Chromastore-model 7120-an outstanding value!

NOW ONLY \$498.50 LIMITED TIME OFFER!

SAVE NOW  
on today's most beautiful COLOR table models!

• NEW Total Automatic Color  
• NEW Ultra-Rectangular Screen  
• NEW Ultra-Bright Tube

Enjoy 18" diagonal picture on the color TV with the built-in memory! Search channels, set the scene change-TAC will always remember to keep best focus locked and picture sharp! Auto-matic? No more juggling up to adjust controls. No more green or purple fringes! Auto-focus the new and best 21 1/2" screen in new double corners and a flat surface for greater viewing and with clearer, sharper pictures with less glare. It's the most flexible TV in the industry. Even sent to the stores for a more screen! Quick On pictures and sound as well as Chromastore for depth and color. Also add to your enjoyment. Chromastore-model 7120-an outstanding value!

SAVE \$30  
Your Choice NOW ONLY \$399.50 LIMITED TIME OFFERS!

SAVE \$20  
on each of these solid-state stereo...  
phonographs that bring you truly fine performance!

Perfect for smaller rooms or apartments—these outstanding values are only 28" wide, yet each offers you wonderful listening room with stereo recordings... plus feature stereo! They have 15 Watts EA music power, four high-fidelity speakers that project sound from both sides and a 4-track automatic. Play the stereo disc, cassette, record and Diamond Discs with A. Chromastore-model 3020. B. Chromastore-model 3022. C. Masterpiece-stereo-model 3023. All as shown in optional record pedestal base (on extra cost).

Your Choice... NOW ONLY \$149.50 LIMITED TIME OFFERS!

REMEMBER... at Berry's you get service after the sale!

**BERRY'S**  
27419 JOY ROAD  
AT INKSTER ROAD WESTLAND  
Phone: KE 5-5050 or CA 1-1717

BERRY'S OWN SERVICE  
Conveniently serviced by our factory trained TV technicians... with in-store and home calls.

## FISHER® SALE ON NOW!

MANY MODELS ON SALE FROM \$349.95 TO \$995.00

Your Records Sound Better on a FISHER

Bring Them In. We'll Prove It!

THE FISHER PHILHARMONIC was designed for people who want the best high fidelity components in one, magnificently styled console. Play a record on the Philharmonic. Play the same record on another make. Listen for the difference, especially in the very low and very high frequencies. A Fisher simply sounds better. And the Philharmonic looks as great as it sounds. Fisher quality is something you can see and feel too. The AM/FM-Stereo chassis and 4-speed automatic turntable slide out easily to the touch. No need to move attractive decorations from its solid top surface. There's plenty of power to drive a separate pair of speakers in another room of your home, and generous storage area for over 100 records or a tape recorder. Fisher consoles are available in all popular styles and finishes.



## STEREOLAND

33111 PLYMOUTH ROAD  
LIVONIA, MICHIGAN  
PHONE 261-8170

OTHER STORES

ROCHESTER 139 S. Main 651-3550  
DETROIT 17131 W. McNichols 273-8921  
GROSSE POINTE 20746 Mack Ave. 884-3800  
SOUTHGATE 13460 Northline 285-3777