

The Prudential
Great Lakes Realty

OPEN HOUSE WEEKEND NOVEMBER 17 & 18



OPEN SUN. 1-4, 1739 Brookview Cir., BH. N. of Square Lake, W. of Ardmore! THE FEATURES FOR A COMFORTABLE LIFESTYLE! This one owner Ecomfield Ranch sits on a beautifully landscaped lot. Highlights bay window in living room, stunning fireplace, deck, 3 bedrooms and dining room. \$27,000 646-6000 01-A5108



OPEN SAT AND SUN. 1-4, 31272 Stone Gate Ct., FH. S. of 14 Mile, E. c Drake. PRESTIGIOUS ROLLING OAK! Located on scul-de-sac this dramatic Colonial sits on over 1 1/2 ac of treed land. Accents family room with fireplace, library, 4 bedrooms, gourmet kitchen an dining room. Now deck! \$185,000 646-6000 01A-4401



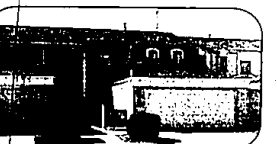
OPEN SUN. 1-4, 96 Golfview, RH. E. of Livernois, S. of Tienken. O'LOOK THE 8TH FAIRWAY AND QUIET POND! In Condo showcases great room, elegant living room, 3 bedrooms, formal dining room, built-ins, 2.5 bos, deck, rec room and new carpet. Seller to pay or year association fee! Lease \$1,300/month or \$154,000 651-6850 04-A-4026



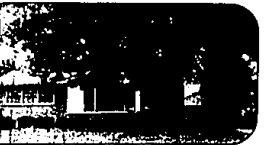
OPEN SUN 1-4, 406 Potawatomi, Royal Oak, N. of 12 Mile, Sof Ansetta. WINSETTA AREA! Charming home is set in a parklike setting. Boasts hardwood floors, updated kitchen and baths, fireplace in living room, 3 bedrooms, dining room and new double rear deck. \$139,900 646-6000 01-A-5212



OPEN SUN. 1-4, 1436 Bowers, S. of Maple, E. of Adams! BIRMINGHAM LIVING! Immaculate Ranch has a contemporary flair. Features 3 bedrooms, finished hardwood floors, roomy living room, formal dining room, 12 kitchen with eating area. Comes complete with pto and 2 car garage. \$125,900 646-6000



OPEN SUN. 2-5, 155 Manor Way, W. of Old Perch, S. of Valton. LOCATION, LOCATION! Beautifully landscaped Rochester Hills Condo has fenced lot with here! canopled deck. Highlights hardwood floors, generous living room, formal dining room, finished basement and updated kitchen. Terrific decor! \$119,900 651-8850 04-A-4815



OPEN SUN. 1-4, 2104 Middlebelt, N. of Square Lake, W. side of Middlebelt. START OUT RIGHT! West Bloomfield Ranch is clean and cozy. Features 3 bedrooms, fabulous living room, formal dining room, hardwood floors, oversized glassed-in porch overlooking fenced lot, full basement and 2 car garage. Freshly painted and neutrally decorated! \$74,000 626-9100 02-B-5062



OPEN SAT. AND SUN. 1-4, 1287 Ridge View Cir., Lake Orion, S. off Orion, W. of Adams. MODEL OPEN! Spectacular builder's model Ranch offers specialties including copper trimmed bay windows, cathedral ceiling and granite fireplace in great room, French doors, corner window in library and Jenn-Air kitchen. Homes from \$179,900 to \$214,900 651-8850 04-A-4956



OPEN SAT. AND SUN. 1-4, 8970 Twin Lake Dr., Union Lake, W. of William Lake Rd., S. off M-59. NATURE RETREAT! Beach and boat privileges come with this detached Condo located in new Twin Lakes Village. Versatile floor plan includes natural fireplace in great room, 3 bedrooms, jacuzzi and walk-out lower level. \$184,900 851-8100 06-B-4968



OPEN SUN. 2-5, 2720 Onagan Trail, Waterford, N. of Elizabeth Lake, E. of Scott Lake. STATELY COLONIAL! Nestled on almost an acre of natural and beautifully landscaped land. Features 4 bedrooms, fireplace in spacious family room, formal living and dining rooms, library and more! \$149,500 851-8100 06-B-5162



OPEN SUN. 2-5, 21680 Meadow Lane, Bham., E. of Lahser, S. of 13 Mile. CHARM AND BEAUTY! Updated Cape Cod is set on a stunning wooded acre of land. Features hardwood floors, 3 large bedrooms, newer almond kitchen, fireplace in living room and formal dining room. Offers cove ceilings, remodeled baths and circular drive. \$137,500 646-6000 01-A-5191



OPEN SUN. 1-4, 4300 Charing Way, BH. E. of Kennington, S. of Long Lake. COUNTRY RETREAT! Surrounded by numerous trees and 1/4 acres of rolling land this sensational Tudor boasts marble entry, vaulted ceilings, fireplace and wet bar in family room, doorways to hi-level deck and master suite with sitting room. \$389,000 646-6000 01-A-4906



OPEN SUN. 2-5, 3303 Merrill, Royal Oak, S. of 13 Mile, W. of Coolidge. CLASSIC CHARMER! Set on tree lined street this Colonial is filled with extras. Accents cove ceilings, hardwood floors, gorgeous fireplace in living room, huge country kitchen with bay window, screened porch and 3 bedrooms. Includes deck and central air. \$109,500 646-6000 01-A-4994



OPEN SUN. 2-5, 39527 Villagewood, Novi, W. of Haggerty, S. of 10 Mile. READY FOR YOUR PERSONAL TOUCHES! Super starter Condo is located on the ground floor and is an end unit. Sports 2 bedrooms, roomy living room, formal dining room, loads of closet space, neutral decor, garage and porch. Great location! \$68,500 626-9100 02-B-4810



OPEN SUN. 1-4, 19280 Berlington, Detroit, W. of Woodward, N. of 7 Mile. A WORLD APART! Elegant and gracious describes this Palmer Woods Tudor. Showcases living room with fireplace, library, entertaining size dining room, 4 bedrooms, finished rec room and gourmet kitchen. Includes carriage house and apartment over 3 car garage. \$198,000 626-9100



OPEN SUN. 2-5, 24855 Ivywood, FH. N. of 10 Mile, E. of Farmington. A REAL GEM! Tremendous Ranch is snuggled on almost an acre of serenity in a prime area of Farmington Hills. Boasts pegged oak floor foyer and hall, fireplace in living room, updated kitchen and 4th bedroom in finished lower level. \$174,900 626-9100 02-B-5047



OPEN SUN. 2-5, 5689 Abington, WB. N. of 14 Mile, W. of Oak Lake, E. of Hiller. GENATIONAL SETTING! Colonial is located in popular Kimberly North. Great floor plan includes handsome family room with fireplace, dining room, master suite with walk-in closet, and hardwood floors. \$149,000 851-8100 06-B-4984



OPEN SAT. AND SUN. 1-4, 1051 Woodward, N. of Oak Lake, E. of Hiller. OLD WORLD STYLE AND CHARM! Within walking distance to shopping, restaurants and parks in Birmingham these fabulous Condos are accented by hardwood floors, spacious living room, 2 bedrooms, 2.5 baths, deck and basement. Still time to choose colors! From \$135,000 626-9100



OPEN SUN. 2-5, 5997 Coppersmith, Waterford, N. of Oak Lake, E. of Hiller. COUNTRY VIEWS! Back to nature area and commons in Williamsburg! Green sub is this Colonial. Boasts large country kitchen, full brick wall fireplace in roomy family room, master suite with private bath, custom wood deck and 4 bedrooms. \$119,900 851-8100 06-A-5235



OPEN SUN. 1-4, 37276 Verron, Sterling Hts, N. of 16 Mile, W. of Mound. FOR THE DISCRIMINATING BUYER! Sparkling updated Ranch is set on quiet interior street of sub. Features fabulous family room with fireplace and skylight, beautiful kitchen with oak cabinetry, 3 bedrooms, newer carpet and roomy living room. \$107,900 689-8900 05-A-5080



OPEN SUN. 1-4, 30757 Shawassoe No. 21, FH. E. of Orchard Lake, S. of 10 Mile. COUNTRY VIEWS! Located in a smaller complex this upper Ranch Condo features 2 bedrooms, large living room, dining room, 2 baths, marble sills and balcony. Includes beige carpet throughout and central. \$65,900 626-9100 02-B-4279



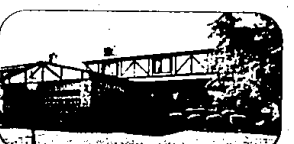
OPEN SUN. 2-5, 4564 Loeburg, WB. N. of Walnut Lake, W. of Orchard Lake. MOVE IN AND ENJOY! Williamsburg Colonial is located in a great family neighborhood with parks. Boasts formal living and dining rooms, library, handsome fireplace in family room, full finished basement and 4 bedrooms. Tastefully decorated! \$189,900 651-8100 06-B-5155



OPEN SUN. 1-4, 2729 Orbil Ct., Lake Orion, W. of Oaklyn, N. of Waldon. PRESTIGIOUS! Newer brick Colonial backs to woods. Features oversized living room with fireplace and built-ins, formal living and dining rooms, super kitchen with doorwall to deck and 4 bedrooms. Walk-out lower level. \$172,000 651-8850



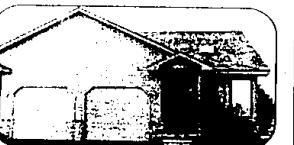
OPEN SUN. 1-4, 5742 Tequesta, WB. N. of Walnut, W. of Orchard Lake. AMID THE TREES! Freshly decorated Colonial is located in West Bloomfield. Accents 3 bedrooms, fireplace in family room, formal dining room, breakfast room and central air. Family neighborhood with Woodpecker Lake privileges! \$143,500 626-9100 02-B-4932



OPEN SAT. AND SUN. 1-4, 22131 Ivanhoe, Sfd. S. of 12 Mile, W. of Lahser. A KNOCKOUT! Tudor styling sets this Colonial home apart from the others. Boasts large foyer, crown mouldings, fireplace in family room, 4 bedrooms, dining room and finished basement. Traditional decor with many updates! \$129,900 626-9100 02-A-4801



OPEN SUN. 2-5, 260 Nesbit Lane, RH. E. of Old Perch, S. of University. WALK TO SCHOOLS! Rochester Hills Ranch is filled with extras. Highlights 3 bedrooms, cozy family room, large rec room, formal dining room, and fireplace in living room. Set on spacious lot with mature trees. \$119,500 651-8850 04-A-5205



OPEN SAT. AND SUN. 1-4, 2567 S. Commerce, Commerce, N. of Pontiac Trail, S. on Glogary. GRAND OPENING! Townhouse Condos highlight skylight and lofted ceiling in living room, 2 bedrooms with 1st floor master bedroom, deck off breakfast room and 2 baths. Public lake access! Other units available! Starting at \$81,900 851-8100 06-B-4716



OPEN SUN. 1-4, 39753 Villagewood, W. of Haggerty, N. of 9 Mile. SITTING PRETTY! Immaculate Novi Condo offers fabulous views. Comes complete with roomy living room, formal dining room, all appliance kitchen, 2 bedrooms, bath and garage. Close to kayas! Move right in! \$65,500 626-9100 02-B-5048

The Prudential
Great Lakes Realty



BIRMINGHAM BLOOMFIELD
646-6000
ROCHESTER
651-8850

FRANKLIN FARMINGTON
626-9100
RELOCATION OFFICE
800-521-4264

WEST BLOOMFIELD
851-8100
TROY
689-8900

OPEN MONDAY-FRIDAY 9 a.m.-9 p.m., SATURDAY 9 a.m.-5 p.m., OPEN SUNDAYS

The Prudential and are service marks of The Prudential Insurance Company of America. An Independently Owned and Operated Member of the Prudential Real Estate Affiliates Inc.