



ACROSS SNOW-LADEN FORESTS—The U.P. 200 Sled Dog Championship hearkens back to the days when trappers, freight haulers and mail carriers trekked with their teams across frozen forests and lakes.

Marquette's for mushers!

Marquette, Michigan—
The U.P. 200 Sled Dog Championship reawakens the heritage of Michigan's Upper Peninsula.

Billed as the "premier mid-distance race in the lower continental United States," the U.P. 200 begins Feb. 15 at 8 p.m. in Marquette, winds its way south to Escanaba for a 12-hour layover, and then hooks northward again to Marquette for the finish on Feb. 17. The southern leg includes a 15-mile trek across frozen Little Bay De Noc from Rapid River to Escanaba.

Between 50 and 60 professional mushers from all over the northern United States are expected to enter

10-dog teams for a shot at the \$20,000 purse. Another \$10,000 has been set aside for the six-dog teams competing in the Midnight Run, an 80-mile sprint from Chatham, south of Marquette, to Escanaba in the wee hours of Feb. 16.

Some of the best viewing spots are downtown Marquette for the start and finish, the Escanaba harbor area, and along the Ford River from Escanaba northward.

For more information on the U.P. 200 Sled Dog Championship, call 906-786-2192.

Marquette, on Lake Superior, is accessible via US-41. Escanaba, on Lake Michigan, is accessible via US-2/41. Both cities are in the central Upper Peninsula.

TRAVEL • VACATIONS



SEE THE NEW... 1991

TRAVEL TRAILERS, TRUCK CAMPERS
MOTORHOMES, 5TH WHEELS
& POP-UPS



2 GREAT MICHIGAN SHOWS



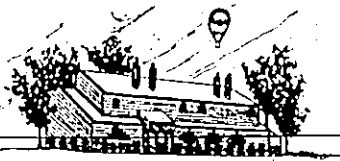
The 8th Annual Battle Creek Camper AND RV Show

KELLOGG ARENA, BATTLE CREEK
JANUARY 31 - FEBRUARY 3



The 15th Annual Flint Camper AND RV Show

I.M.A. ARENA, FLINT
FEBRUARY 6 - FEBRUARY 10



Brookside Inn

Beulah, Michigan
Serenity and Beauty as you watch
the sun go down on Crystal Lake

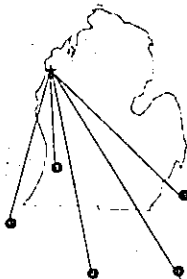
Enjoy a fantastic visit...relax on a custom made mirrored canopy waterbed and in a private Polynesian spa. Savor time dining in the interesting dining room or under a huge willow tree beside the Eden Brook...Live a time created to enjoy - renew - remember - discover - escape...with the one you love. Give a gift of love - a gift certificate...for honeymoon, anniversary, birthday, or just a surprise to say - I care.

New at the Brookside
Unique Gift Shop featuring one-of-a-kind
treasures from all over the world.
Glass Blowing Studio - Lamp Working &
Glass Blowing by the Famous Don Schneider.

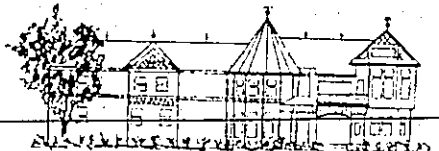


The Perfect Romantic
Getaway
For Valentines
Or Any
Occasion

Winter Activities
Surround Us.



5 HOURS FROM MICHIGAN
4 HOURS FROM DETROIT
3 HOURS FROM GRAND RAPIDS
2 HOURS FROM TAYLOR MI
2 HOURS FROM TOLEDO OH



ENTER THE VICTORIAN SETTING OF

The Hotel Frankfurt

And step back into time... Live a time created to enjoy - renew - discover - escape with the one you love... The ultimate accommodations for two seeking intimate seclusion.

A personal haven for togetherness... with mirrored canopy waterbeds... private Polynesian spa... plus carpeting and a little log stove.

Additional luxuries - a sauna - a steam bath - or a French tanning solarium.

FRANKFORT, MICHIGAN

Where Betsie Bay flows into Lake Michigan

All Reservations - 616-882-7271

Your Stay Includes Complete Dinner for Two From Full Menu and Your Choice of Breakfast
Looking for that Special Getaway During the Upcoming Year? - Now is the Time to Reserve!