

Kids create

Celebrity judges pick out best inventions

A PANEL of celebrity judges helped pick winning entries in the Longacre Elementary INVENT AMERICA! competition last month.

A national competition, the program is designed to stimulate creativity and problem-solving skills. Judges included assistant superintendent Judith White, Channel 2 weekend weathercaster Kam Carman and Detroit Free Press columnist James Ricci who had the difficult task of choosing the best invention for each grade at the school April 12.

One of the inventions included "Lunch Box '90," an insulated lunch box with custom cut holes for reusable plastic containers was created by fifth grader Aaron Bawol, who wanted something to help the environment by eliminating repeated use of disposable plastic lunch bags.

And third grader Jennifer Tosolan's "Bug Sucker" vacuums up bugs for safe disposal outside. Even the forgetful can be helped, as first grader Michael Bullion proved with his "Toothbrush Reminder" which tells you if you've brushed your teeth or not by the different hook on which you hang your toothbrush.

All of Longacre's young inventors were honored by Farmington Mayor Shirley Richardson, who presented each participating student with a certificate and ribbon and told them "you are all winners."



Photos by JUNEBUG CLARK

Longacre Elementary students unveiled their inventions at the school's media center during a judging in the INVENT AMERICA! competition last month. Here, reporters and camera crews from Channel 2 recorded the event.



Longacre inventor Nicole McDoniel shows her "Gum B Good" a chewing gum flavor stretcher, while classmate Jennie Toslan demonstrates the "Bug Sucker," a humane way to capture and release creepy-crawly things.

FARMINGTON SQUARE MONTESSORI
Pre-School, Kindergarten & Day Care
OPEN HOUSE/REGISTRATION
Thursday, May 23, 1991, 7-9 p.m.
Entertainment • Refreshments • Mini Musical by Staff of Kids 'n' Music
MONTESSORI TRAINED STAFF/MATERIALS
SCHOOL HOURS 7:30 a.m.-5:30 p.m.
Beginning Our 9th Year at 33424 Oakland Ave.
(In The Salem United Church of Christ Downtown Farmington)
For Information Call...**474-5268**
School Begins September 4th, 1991

Small in size, big in reach.
O & E CLASSIFIEDS

HAGGERTY LUMBER
NOW THRU MAY 19th
NAIL DOWN QUALITY AND SAVINGS DURING OUR SPRING ROOFING SALE

NAME	PRICE	FEATURES
CLASSIC PLUS 3/8" FIBERGLASS ASPHALT SHINGLES	599 BUNDLE 17.87 SQUARE	• 20 yr. limited warranty • UL wind resistant rating
ORGANIC ASPHALT SHINGLES "SUPERPLUS IMPERIAL SEAL"	788 BUNDLE 23.84 SQUARE	• 20 yr. limited warranty • Choice of colors
FIBERGLASS ASPHALT SHINGLES "CRESTWOOD SHADOW"	1199 BUNDLE 35.97 SQUARE	• 25 yr. limited warranty • 3-5 year appearance appearance Special Order
FIBERGLASS ASPHALT SHINGLES "SUPREME SHADOW"	1049 BUNDLE 31.47 SQUARE	• 25 yr. limited warranty • Self-sealing 3/16"
METRIC LAMINATED SHINGLES "OAKRIDGE II FIBERGLASS"	1333 BUNDLE 39.59 SQUARE	• UL Class "A" fire rating Special Order
METRIC LAMINATED SHINGLES "OAKRIDGE FIBERGLASS"	1799 BUNDLE 71.37 SQUARE	• 30 yr. limited warranty • Random tag wood-like look Special Order

WATERPROOF BARRIER **7999**
• Prevents water & ice damage

ROOFING FELT **899**
• 30 lb. roll

ROOF COATING **1299**
• Forms tough adhesive bond

CRACKED ROOFING NAILS **1999**
• 10 lb. tin

SIDING SPECIALS

T-1-11 PLYWOOD SIDING **999**

PINE PLYWOOD SIDING **1499**

WOODGRAIN SOLID VINYL SIDING **3999**

NEW! WATERFIELD PRE-FINISHED CABINETS
WALLS STARTING AT **\$42**
BASES STARTING AT **\$57**

WEEKLY SPECIALS

TAPERED EDGE DRYWALL **289**
• Available in 10' & 12' lengths

PRESSURE TREATED ROUND EDGE LANDSCAPE TIMBERS **289**
• Ideal for flower beds

PICNIC TABLE KIT **1999**
• Includes lumber & hardware

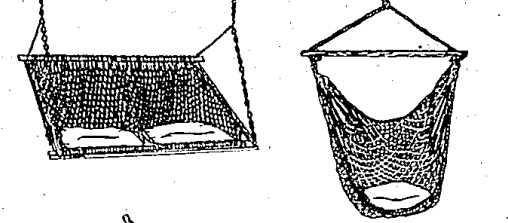
MALBU BY INTERMATIC COMPACT WOOD DECK LIGHT SET **5299**
• Includes 4 lights, 50' low voltage cable & power pack with on/off switch

RED VOLCANIC LORSESSCE STONE **199**
• 1 cu ft. bag
• Decorative

TREATED DOG EAR PRIVACY FENCE **2999**
• 8 ft. high
• Stain or paint

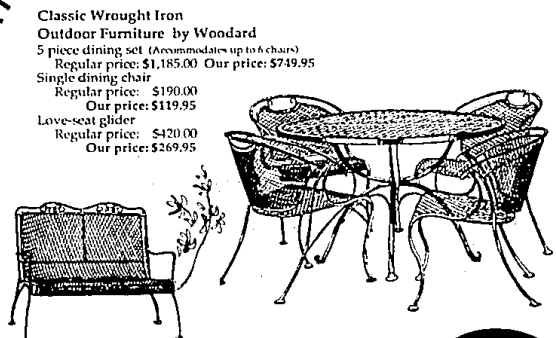
ORIENTED STRANDBOARD SHEATHING **499**
• Uniform flat sheathing

WORTH THE TREK OUT ANN ARBOR ROAD



Hand Crafted Rope Hammocks and Swings by Hatteras.
Rope hammock with free-standing metal frame
Regular price: \$256.00 Our price: \$219.95
Double rope swing
Regular price: \$179.00 Our price: \$149.95
Single rope swing
Regular price: \$ 84.00 Our price: \$ 69.95

WORTH THE TREK OUT ANN ARBOR ROAD



Classic Wrought Iron Outdoor Furniture by Woodard
5 piece dining set (Accommodates up to 6 chairs)
Regular price: \$1,185.00 Our price: \$749.95
Single dining chair
Regular price: \$190.00 Our price: \$119.95
Love-seat glider
Regular price: \$420.00 Our price: \$269.95

Summer Season Hours
Monday through Friday - 10:00 am to 8:30 pm
Saturday - 10:00 am to 6:00 pm
Sunday - noon to 4:00 pm
Closed Every Wednesday

CORNWELL pool & patio

874 Ann Arbor Road, Plymouth
459-7410

WALLED LAKE
2055 Haggerty Rd.
624-4551
FAX: (313) 624-6819

STORE HOURS
—WEEKDAYS—
7:00 a.m. - 6:00 p.m.
—SATURDAY—
7:00 a.m. - 5:00 p.m.
—SUNDAY—
9:00 a.m. - 4:00 p.m.

CREDIT ACCEPTED

CASH & CARRY PRICES
GOOD THRU MAY 19, 1991.

Delivery Available! Ask Us!

EVERYTHING FOR THE HOMEOWNER OR BUILDER... Ask Us!