

SUPERVISORS' PROCEEDINGS

(Continued from Preceding Page)

Receipts:	\$ 510.00
Supplies sold	212.44
Interest on bonds	10.00
Interest on deposits	500.00
Total	\$1,372.44
Disbursements:	\$1,372.44
Salaries	100.00
Supplies	100.00
Incidentals	100.00
Light	100.00
Travel	100.00
Telephone	100.00
Postage	100.00
Printing	100.00
Stationery	100.00
Repairs	100.00
Interest on bonds	100.00
Interest on deposits	100.00
Total	\$1,372.44

ISAC BOARD.
Moved by Elz, supported by Chase that the report be accepted and adopted.
Carried.
By the Board recess until the next hour this afternoon.

Afternoon Session.
Meeting called to order by Chairman, Alfred Gale.
Present: Armstrong, Boyd, Brewer, Brookes, Butterfield, Chase, Clark, Custer, Daugherty, DeWitt, Dwyer, Gale, Gibbs, Hillman, Hill, Kennedy, Lee, Lester, Moore, Orson, Peritt, Salmer, Starke, Stark, Widdow, Wattle, Wilson, Wrenn.

Quorum present.
Resolved that the business be read and approved.
Resolved that the Board of Supervisors be authorized to accept and adopt the report of the County Board of Supervisors.

County Board of Supervisors.
Moved by Elz, supported by Chase that the report be accepted and adopted.
Carried.
By the Board recess until the next hour this afternoon.

County Board of Supervisors.
Moved by Elz, supported by Chase that the report be accepted and adopted.
Carried.
By the Board recess until the next hour this afternoon.

County Board of Supervisors.
Moved by Elz, supported by Chase that the report be accepted and adopted.
Carried.
By the Board recess until the next hour this afternoon.

County Board of Supervisors.
Moved by Elz, supported by Chase that the report be accepted and adopted.
Carried.
By the Board recess until the next hour this afternoon.

County Board of Supervisors.
Moved by Elz, supported by Chase that the report be accepted and adopted.
Carried.
By the Board recess until the next hour this afternoon.

County Board of Supervisors.
Moved by Elz, supported by Chase that the report be accepted and adopted.
Carried.
By the Board recess until the next hour this afternoon.

County Board of Supervisors.
Moved by Elz, supported by Chase that the report be accepted and adopted.
Carried.
By the Board recess until the next hour this afternoon.

County Board of Supervisors.
Moved by Elz, supported by Chase that the report be accepted and adopted.
Carried.
By the Board recess until the next hour this afternoon.

County Board of Supervisors.
Moved by Elz, supported by Chase that the report be accepted and adopted.
Carried.
By the Board recess until the next hour this afternoon.

County Board of Supervisors.
Moved by Elz, supported by Chase that the report be accepted and adopted.
Carried.
By the Board recess until the next hour this afternoon.

County Board of Supervisors.
Moved by Elz, supported by Chase that the report be accepted and adopted.
Carried.
By the Board recess until the next hour this afternoon.

County Board of Supervisors.
Moved by Elz, supported by Chase that the report be accepted and adopted.
Carried.
By the Board recess until the next hour this afternoon.

County Board of Supervisors.
Moved by Elz, supported by Chase that the report be accepted and adopted.
Carried.
By the Board recess until the next hour this afternoon.

County Board of Supervisors.
Moved by Elz, supported by Chase that the report be accepted and adopted.
Carried.
By the Board recess until the next hour this afternoon.

McClure, Melzer, Malcolm Moore, Newton, Orson, Peritt, Salmer, Starke, Stark, Widdow, Wattle, Wilson, Wrenn.

Report of Committee.
Resolved that the report be accepted and adopted.
Carried.

Report of Committee.
Resolved that the report be accepted and adopted.
Carried.

Report of Committee.
Resolved that the report be accepted and adopted.
Carried.

Report of Committee.
Resolved that the report be accepted and adopted.
Carried.

Report of Committee.
Resolved that the report be accepted and adopted.
Carried.

Report of Committee.
Resolved that the report be accepted and adopted.
Carried.

Report of Committee.
Resolved that the report be accepted and adopted.
Carried.

Report of Committee.
Resolved that the report be accepted and adopted.
Carried.

Report of Committee.
Resolved that the report be accepted and adopted.
Carried.

Report of Committee.
Resolved that the report be accepted and adopted.
Carried.

Report of Committee.
Resolved that the report be accepted and adopted.
Carried.

Report of Committee.
Resolved that the report be accepted and adopted.
Carried.

Report of Committee.
Resolved that the report be accepted and adopted.
Carried.

Report of Committee.
Resolved that the report be accepted and adopted.
Carried.

Report of Committee.
Resolved that the report be accepted and adopted.
Carried.

Report of Committee.
Resolved that the report be accepted and adopted.
Carried.

Report of Committee.
Resolved that the report be accepted and adopted.
Carried.

Report of Committee.
Resolved that the report be accepted and adopted.
Carried.

Resolved that the report be accepted and adopted.
Carried.

Resolved that the report be accepted and adopted.
Carried.

Resolved that the report be accepted and adopted.
Carried.

Resolved that the report be accepted and adopted.
Carried.

Resolved that the report be accepted and adopted.
Carried.

Resolved that the report be accepted and adopted.
Carried.

Resolved that the report be accepted and adopted.
Carried.

Resolved that the report be accepted and adopted.
Carried.

Resolved that the report be accepted and adopted.
Carried.

Resolved that the report be accepted and adopted.
Carried.

Resolved that the report be accepted and adopted.
Carried.

Resolved that the report be accepted and adopted.
Carried.

Resolved that the report be accepted and adopted.
Carried.

Resolved that the report be accepted and adopted.
Carried.

Resolved that the report be accepted and adopted.
Carried.

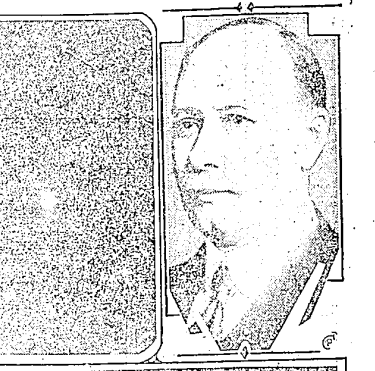
Resolved that the report be accepted and adopted.
Carried.

Resolved that the report be accepted and adopted.
Carried.

Resolved that the report be accepted and adopted.
Carried.

Resolved that the report be accepted and adopted.
Carried.

Balm for Homely



Dr. Frederick P. Cabot, chief justice of the Boston juvenile court, says most good-looking people are feeble-minded. "But they are likely to be much more steady and reliable than their feeble-minded brethren," he adds. "And they usually are successful."

SPECIAL SESSION

(Continued from Page 2)
Resolved that the report be accepted and adopted.
Carried.

Resolved that the report be accepted and adopted.
Carried.

Resolved that the report be accepted and adopted.
Carried.

Resolved that the report be accepted and adopted.
Carried.

Resolved that the report be accepted and adopted.
Carried.

Resolved that the report be accepted and adopted.
Carried.

Resolved that the report be accepted and adopted.
Carried.

Resolved that the report be accepted and adopted.
Carried.

Resolved that the report be accepted and adopted.
Carried.

Resolved that the report be accepted and adopted.
Carried.

Resolved that the report be accepted and adopted.
Carried.

Resolved that the report be accepted and adopted.
Carried.

DO COMETS AFFECT WEATHER?

Do comets and sunspots have any influence on climatic conditions on the earth? Almost as much as a firefly has on the temperaments of a human being, says Professor William J. Humphreys, weather bureau astronomer and meteorological physicist, Washington, D. C. Humphreys is shown above to the right. To the left is a view of the Pons-Winnecke comet, recent visitor to the solar system, and below is a telescopic view of the sun. The black areas near the equator are well-developed sunspots.

Oil Head Quizzed

Sheldon Clark, of Chicago, vice president of the Sinclair refining company, has been summoned by federal officials to tell whether or not he received reports from detectives alleged to have been employed to shadow members of the recently discharged Fall-Schiller oil conspiracy jury in Washington.

Picked First

A team of southern football players is being chosen to meet a picked team of California players in Los Angeles Christmas day. The eleven will be chosen and coached by six of the leading coaches of south and California. The south already has selected Fred Pickard, captain of the University of Alabama eleven, to captain the southern team.

DESIGNS TROUSSEAU OF COUNTESS

It cannot be denied that some of the efforts which the Government has made, both in buildings and in monuments, have served to create an impression that they do not always increase the beauty of their surroundings. — President Coolidge.

Meteorite Career

R. B. Bennett, recently elected leader of the Canadian Conservative party, has amassed a fortune in the last 30 years. In 1897, he arrived in Calgary, Alberta, almost penniless. Today, he is a director of the Canadian Pacific railway, the Royal Bank, Imperial Oil and Imperial Paper, and is president of the E. B. Eddy company.

DESIGNS TROUSSEAU OF COUNTESS

It cannot be denied that some of the efforts which the Government has made, both in buildings and in monuments, have served to create an impression that they do not always increase the beauty of their surroundings. — President Coolidge.

Meteorite Career

R. B. Bennett, recently elected leader of the Canadian Conservative party, has amassed a fortune in the last 30 years. In 1897, he arrived in Calgary, Alberta, almost penniless. Today, he is a director of the Canadian Pacific railway, the Royal Bank, Imperial Oil and Imperial Paper, and is president of the E. B. Eddy company.

DESIGNS TROUSSEAU OF COUNTESS

It cannot be denied that some of the efforts which the Government has made, both in buildings and in monuments, have served to create an impression that they do not always increase the beauty of their surroundings. — President Coolidge.

Meteorite Career

R. B. Bennett, recently elected leader of the Canadian Conservative party, has amassed a fortune in the last 30 years. In 1897, he arrived in Calgary, Alberta, almost penniless. Today, he is a director of the Canadian Pacific railway, the Royal Bank, Imperial Oil and Imperial Paper, and is president of the E. B. Eddy company.