

MORTGAGE SALE
 Default having been made in the conditions of a certain mortgage made by PIG AND WHITTLE CORPORATION, a Michigan Corporation, to THE FARMINGTON STATE SAVINGS BANK, a State Banking Corporation, dated the 15th day of May, A. D. 1926 and recorded in the office of the Register of Deeds for the County of Oakland, State of Michigan, on the 24th day of May A. D. 1926 in Liber 416 of Mortgages on pages 160 to 163 inclusive, and afterwards assigned by the Farmington State Savings Bank, a Michigan Corporation, to First National Bank in Pontiac, Michigan, a Federal Banking Corporation, by assignment dated the 9th day of June A. D. 1926 and recorded in

the office of the Register of Deeds for the County of Oakland on the 10th day of June A. D. 1926 in Liber 401 of mortgages on pages 209 and 210, and afterwards assigned by the First National Bank in Pontiac, Michigan, a Federal Banking Corporation, to the Farmington State Savings Bank, a Michigan Corporation, by assignment dated the first day of August A. D. 1927 and recorded in the office of the Register of Deeds for the County of Oakland on the 15th day of August A. D. 1927 in Liber 470 of mortgages on page 581, and by reason of the said default the power of sale contained in said mortgage having become operative, on which mortgage there is claimed to be due at the date of this notice for principal and interest, the sum of

\$16,837.50 and an attorney fee as provided by law, and no proceedings at law having been instituted to recover the money secured by said mortgage, or any part thereof, notice is hereby given that by virtue of the power of sale contained in said mortgage, and the statute in such case made and provided, the said mortgage will be foreclosed by a sale of the mortgaged premises at public vendue, to the highest bidder, at the Eastern or Saginaw Street entrance to the Court House in the City of Pontiac, Michigan, that being the place where the Circuit Court for the County of Oakland State of Michigan, is held, on the third day of December A. D. 1927, at nine o'clock in the forenoon Central Standard Time; the description of which said premises contained in said mortgage is as follows:

All that certain piece or parcel of land situate in the Township of Farmington, County of Oakland and State of Michigan, described as follows, to-wit:

Part of Southwest quarter of Section 26, Town 1 North, Range 9 East, Farmington Township, Oakland County, Michigan, described as follows: Beginning at a point on the center line of Grand River Road located South 60 degrees East 63.45 feet from the intersection of West line of Section 26 with center line of Grand River Road South 60 degrees East 38.50 feet to intersection of center line of Grand River Road with the west line of Orchard Lake Avenue; thence along the West line of Orchard Lake Avenue North 2 degrees 04' 45" West 180.57 feet; thence South 88 degrees 19' 00" West 68.50 feet; thence South 1 degree 41' 00" East 48.50 feet; thence South 19 degrees 59' 00" East 117.80 feet to place of beginning.

Dated: August 16th, A. D. 1927.

FARMINGTON STATE SAVINGS BANK,
 a State Banking Corporation

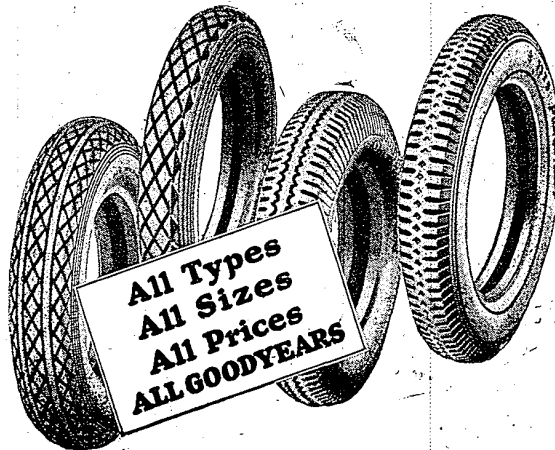
Assignees
 Pelton & McGee,
 Attorneys for Assignees.
 Business Address,
 First National Bank Bldg.,
 Pontiac, Michigan. 41-53

MOVIES
 TUESDAY NIGHT

"THE NUT CRACKER"

Comedy
 Admission, 15c and 25c
 Methodist Community Hall

When It Comes To Tires



We offer you the finest equipment that the world's largest tire factory can produce.

GOODYEAR ALL-WEATHERS if you want the best. GOODYEAR-BUILT PATHFINDERS if you want maximum quality for a minimum investment. These two types offer you a quality tire at just about the price you want to pay. We offer you—in addition—a brand of SERVICE that will make sure that every Goodyear Tire you buy from us will deliver its full quota of mileage and satisfaction on your wheels. Isn't this the kind of TIRE SERVICE you want?

See These Goodyear Values

30x3 ¹ / ₂ Awt. Cl. Cord	\$10.95
30x3 ¹ / ₂ Pathfinder Cl. Cord	8.50
29x4.40 Path. Balloon	10.05
29x4.40 A. W. T. Balloon	12.05

Come in and get our price on your size

Olin Russell
 FORD SALES AND SERVICE
 Farmington

Farmington Mtr. Sales
 Chevrolet Sales and Service
 Farmington

L. W. Wilsher
 WHITE STAR GAS STATION
 12-Mile and Orchard Lake Rd.

B. H. Leavenworth
 NOVI GARAGE
 Novi

J. L. Taylor
 CHRYSLER-CHEVROLET
 Walled Lake

M. G. Post
 FORD SALES AND SERVICE
 Walled Lake

Phone Johnny-on-the Spot For Coal

PHONE 20



Have you put off ordering your coal? Give it a thought right now and phone—telling us how many tons you require for the winter. We'll attend to your order at once.

Farmington Lumber and Coal Co.

C. G. HOGLE, Manager

PHONE 20

FARMINGTON

Now Added Beauty and Distinction at Surprising Price Reductions



Now, as a result of the surprising reductions in all Pontiac Six prices, two great motoring luxuries are combined at the lowest price in history—six-cylinder performance and Fisher body luxury. Now, as never before, does the supremacy of Pontiac Six value reveal itself to cold comparison—value based on the fashionable new Duco colors, on the world famous smoothness, snap and long life of the Pon-

tiac Six engine, on the comfort and convenience of Pontiac's exclusive features of advanced and modern design.

Come in! See the world's best buy among low-priced sixes! Learn how much more you can get for your money with the Pontiac Six now en-

riched in beauty and reduced in price.

New lower prices on all passenger car body types. (Effective July 15)

- Coupe - - - \$745
- Sport Roadster - \$745
- Sport Cabriolet - \$795
- Landau Sedan - \$845
- De Luxe Landau Sedan \$925

Pontiac Six De Luxe Delivery, 1927 to 1928. The New Outlook, 1928 American Six, 1928 to 1929. All prices at factory. Delivery charges and taxes extra. Easy to pay on the General Motors Term Payment Plan.

SHAW BROS. FARMINGTON PHONE 162

The New and Finer PONTIAC SIX