

Keep a sunny outlook when shooting your photographs

Have you ever ruined a roll of slow speed film because you forgot to set back the ASA from that fast roll you shot indoors the previous night? Or have you found yourself not knowing how to expose your picture because you didn't change your battery and it just died?

Well, a little knowledge about a handy photographic rule will prove to be of great value in situations such as these. The rule is called "sunny 16" and here's how it works.

On a sunny day, set your aperture (f) at f-16 and your shutter speed at the number closest to the ASA of the film you are using, and a perfect exposure is yours.

In addition to use of his meter, Monte Nagler's knowledge of the "sunny 16" rule assured him this perfectly exposed sunny day picture on Greece's Santorini Island.

FOR EXAMPLE, if shooting Kodachrome 64 on a sunny day, an exposure of f-16 at 1/60 second will result in a properly exposed shot.

Keep in mind that any other combination of aperture and shutter speed will work for the same film. For instance, f-11 at 1/125 second or f-8 at 1/250 second will produce the identical exposure as the original f-16 at 1/60.

Just use the combination you want to get the desired depth-of-field and "stopping power" in your picture.

Using a faster film? The same "sunny 16" rule applies. ASA 400 film requires f-16 at 1/500 second, ASA 1000 film is f-16 at 1/1000 second, etc.

YOU MAY ask, "What if it's not sunny?" Well, here's where you use your best judgment.

If it's bright overcast outside, open up one f-stop. So, if you're using Kodachrome 64, set your camera at f-11 at 1/60 second or any compatible combination. If it's normal overcast, open up two f-stops. Heavy overcast or open shade, three f-stops.

See how simple this all is? And you don't have to use the "sunny 16" rule only when your meter isn't working. Use it as a means of checking up on your meter so that you'll know you've set the proper ASA and that your meter is performing satisfactorily.

Understanding the rule of "sunny 16" will assure you of well-exposed photographs that will surely give you a sunny disposition!

Monte Nagler is a professional photographer based in Farmington Hills.

Archaeology talk slated

An illustrated lecture, "Terracotta No Longer, Archaeology in Grevena, Greece," will take place 8 p.m. Thursday, Nov. 21, in the Lecture Hall of the Detroit Institute of Arts, 5200 Woodward.

The free lecture is presented by the Detroit Society of the Archaeological Institute of America and the Antiquaries of the Founders Society of the DIA.

Professor Nancy C. Wikie of Carleton College in Northfield, Minn., will conduct the discussion.

The talk will examine the Grevena Project in Thessaly, which combines a study of modern agriculturalists and herders to interpret better the Neolithic, Hellenistic, Roman and Byzantine archaeological sites of the region.

SECURITY home loan

ZERO POINTS

30 Year FIXED 8.875% 15 Year FIXED 8.75%
Annual Percentage Rate 9.00% Annual Percentage Rate 8.75%

NO APPLICATION FEES
NO FEES UNTIL CLOSING
NO KIDDING!

Why spend your money now only to wonder if you will be approved? Apply with a company that charges NO UP FRONT FEES - NO FEE DURING PROCESSING. Only the usual and customary costs AT CLOSING, as they should be. Take advantage of our low rates and logical approach to lending.

Rates subject to change without notice.

2065 W. MAPLE (313) 669-1334



METAMORA HUNT COUNTRY - THE HORSEMAN'S FANTASY!!

One-of-a-kind describes this totally remodeled farmhouse on 14.4 acres (6.5 are wooded) in an area of lovely homes. Numerous amenities include 2200 sq. ft., 3 bedrooms - den, 2 full baths, large country kitchen with built-in appliances, family room, spacious master suite & a 90 ft. wrap-around porch with breathtaking views of the countryside. Horse facilities include an 8 (large) stall barn with water & electricity, 4 wood paddocks, large pasture, 20x22 level riding area, 32x18 building & 2 sheds. Property frontage is adjacent to Seven Ponds Nature Center (240 acres) with cross country skiing and hiking trails. A fantastic price for this unique area at \$199,900.

For more information, please call "SHERRY THOMPSON" at 678-2256 or 797-5522

SHERRY THOMPSON ASSOCIATES, INC.

72 E. High Street
Metamora, Michigan 48465
678-2256

CALL COLDWELL BANKER

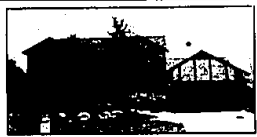
Schweitzer Real Estate



SPECTACULAR CUSTOM DESIGNED FARMINGTON HILLS. 1/2 acre wooded cul-de-sac lot. Security system, leaded glass front doors, 2 air conditioners and furnace systems, jacuzzi tub, grand master bathroom, 30' x 32' rec room, 2 1/2 car garage. \$1,099,000 (OE-N-6811) 347-3050



PHEASANT HILLS
NORTHVILLE. Backs to woods for max. privacy. 4 bedrooms, 2 1/2 baths, great room w/ fireplace. Finished walkout, driving range, wet bar, 2 way fireplace. \$549,900 (OE-N-90ELM) 347-3050



METICULOUSLY MAINTAINED TUDOR FARMINGTON HILLS. Built by Rossi. Quality conscious owners. Neutral decor with just the right flair. Many upgrades. This one has it all. \$229,900 (OE-N-61WTN) 347-3050



LIVONIA. Charming 4 bedroom, 2 1/2 bath colonial in Barron Hollow Estates. Neutral colors, updated kitchen, master bath, finished rec room. \$141,500 (OE-L-7AWOO) 462-1811



EXECUTIVE FLARE
FARMINGTON HILLS. 3 bedrooms, 2 1/2 bath for immediate occupancy. Large private deck with view of stream & commons, library, 2 fireplaces, beautifully landscaped. \$259,900 (OE-L-15COU) 462-1811



HOLIDAY
NOV. 2,148 sq. ft. ranch in Echo Valley. 3 bedrooms, huge gathering room, inground pool, many updates. Novi schools. Move right in! \$160,000 (OE-N-45CED) 347-3050

Relocating? Call our office nearest you or (313) 268-1000 • (800) 486-Move

Livonia Northville
462-1811 347-3050

We're looking for a few good toys.
Drop off a new, unwrapped gift for a needy child.



SPACIOUS RANCH CONDO - Hard to find 2 bedrooms plus library, great heater, carpet, stunning white kitchen, skylights, 1st floor laundry, cathedral ceiling. Everything you want for happy condo living. \$259,900 855-9100
MARKETED BY SHERI SHERMAN

"BANK HOME" OFFER - Completely renovated including new master bath with jacuzzi, 1 large bedroom, tons of storage, formal dining room, hardwood floors, private Bloomfield Beach. Xmas offers, must sell. Reduced to \$259,900 855-9100
MARKETED BY JIM BUEHLER

ENTERTAINER'S DELIGHT - Lovely 3 bedroom, 2 bath home situated on a tree-lined acre lot featuring family room, fireplace, Florida room & new inground pool with fantastic deck. Only \$159,900 648-5800
MARKETED BY DONNA MCMANUS

PRESTIGIOUS RICHMOND HILLS - Stunning Colonial backs up to golf course. Many features throughout including fabulous master bedroom, family room, spacious living & many more amenities. \$259,900 648-5800
MARKETED BY SUSAN KEIM

Associates, Inc. 855-9100
Birmingham, Inc. 645-5800
Concierge 689-4600

RED CARPET KEIM REAL ESTATE

Maple West, Inc. 851-8010/553-5888

Midwest, Inc. 477-0880

Walker & Assoc. 354-1500

CLARKING - Two bedroom condo offers full finished basement, 1 1/2 baths, newer kitchen cabinets and carpeting throughout. Includes use of complex pool and tennis courts plus many more luxury amenities. \$99,900. Call for an appointment today! 689-4600
MARKETED BY NADIA GOTTILIB

NEIGHBORLY - Freshly painted townhome ready for immediate occupancy. Two bedrooms, 1 1/2 baths and a full finished basement located just minutes from downtown Birmingham. Excellent value! Lease 1/2000 details available.
MARKETED BY LATHY REID

STUNNING CONTEMPORARY OVERLOOKS GOLF COURSE - Stunning entrance, 4 bedrooms, 3 1/2 baths. Sky-high, extensive decking, treecrip breakfast room, great suite without family room. \$51,800 553-5888
MARKETED BY HELEN CARROLL

ALMOST NEW CHARMAL - Overlaid master bedroom with huge walk-in closet. 3 bedrooms, 2 1/2 baths, family room. Beautiful deck - won't leave! \$149,900 851-8010 553-5888
MARKETED BY JENNIFER FITZPATRICK

BEAUTIFUL ECHO VALLEY - Two units available, 2 bedrooms, 2 baths, neutral decor throughout. Excellent location close to shopping and all services immediate. Occupancy: \$79,900 347-3050 851-8010 553-5888
MARKETED BY VIRGINIA FITZPATRICK

FARMINGTON HILLS - A huge park-like lot surrounds custom 4 bedroom, 2 1/2 bath brick colonial loaded with luxury amenities and located in most sought after neighborhood. Hurry! \$218,000 877-0080
MARKETED BY CONNIE ISHILL

FARMINGTON HILLS - Truly elegant traditional brick colonial to describe perfectly. Family room, fireplace, formal dining room, library, hardwood floors, crown moldings much more. \$269,900 678-2256
MARKETED BY JESSIE HAYMAKER

NOVI - Executive ranch shows like model. Ceramic floor, dramatic great room with cathedral ceiling and fireplace, formal dining, terrific kitchen. 2 1/2 baths and most prestigious with 4 car garage. \$499,900
MARKETED BY JOHN GOODMAN

OAK PARK HILLS - Lovely 3 bedroom brick ranch. Neutral decor throughout, 2 car garage. Move-in condition. Listed at \$169,900 154-1500
MARKETED BY MILDRED STEVENSON

SPRINGFIELD RANCH - This Southfield home boasts of approximately 2000 square feet, 4 bedrooms, 2 1/2 baths, crown molding, built-in bar, built-in indoor barbecue, living room with fireplace, 2 car attached garage and more. Priced at \$122,500 551-5100
MARKETED BY NATHY CATES