

CHRISTMAS SHOPPING DONE?

We seriously suggest the ultimate Christmas present for you and yours — A new home!
Only 12 days left until Christmas. All are shopping days at...

WEIR, MANUEL, SNYDER & RANKE, INC.



FOR SALE
WEIR, MANUEL
SNYDER & RANKE



NATURAL SETTING of over two acres in a prestigious area of the City of Bloomfield Hills. This new classic pillared colonial is within walking distance of Cranbrook Institutions. Walk-out lower level. (644-6300) 193829



BIRMINGHAM SCHOOLS. Three bedroom, two bath ranch has open floor plan with bright decor. French doors from great room with vaulted ceiling lead to Florida room overlooking yard. Fireplace. Deck. \$129,900. (644-6300) 190538



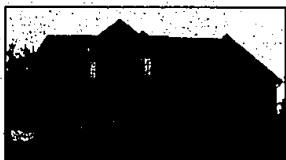
SECLUDED LOT. Over half an acre surrounds this updated house. Kitchen with oak cabinets, two fireplaces, deck and walk-out patio. Three bedrooms, two baths. Neutral decor. Bloomfield Hills Schools. \$139,000. (851-5500) 194702



EXQUISITE LIVING in the heart of Bloomfield Hills on over 2 acres behind private, gated, brick walls. Great for entertaining with large open rooms, yet cozy for a family. Playhouse, cabana and gorgeous pool. (644-6300) 190619



PRESTIGIOUS UPPER STRAITS LAKE. 90' of canal front with gorgeous lake view from every room of this custom built, low maintenance home. 3 bedrooms. Have fun all winter on this all sports lake. \$279,500. (851-5500) 194624



HAWTHORN HILLS HOME with 4 bedrooms, 2½ baths, 2-story great room, library/study. Tudor accented with crown moldings, hardwood flooring, 6-panel doors and recessed lighting. 3 car garage. Rochester. \$284,000. (651-3500) 096497



HANDSOME COLONIAL in a family subdivision. 3 bedrooms, master with walk-in closets, 1½ baths, family room has raised hearth fireplace, large deck with overhead sun screen, central air, independence. \$122,900. (651-3500) 096250



BLOOMFIELD HILLS COLONIAL with two-story foyer, updated kitchen, five bedrooms and walk-out lower level rec room. Very impressive hilltop site. Portico over drive at entrance. A lot of house! \$455,000. (644-6300) 191511



BLOOMFIELD VILLAGE PRESTIGE with family convenience. Oak paneled library, high beamed ceiling in the family room, four bedrooms and a lower level billiards room. Four fireplaces. Deck. \$398,900. (644-6300) 193281



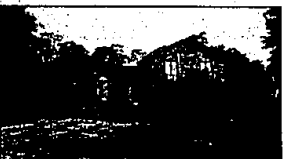
THREE BEDROOM COLONIAL in Birmingham's award-winning Midvale School area has pickled cabinets in kitchen and extensive hardwood floors. Newly painted, wallpapered and professionally landscaped. \$259,000. (644-6300) 191030



RAVINES OF ADAMS WOODS. Well located Farmwood model with walk-out lower level has large deck overlooking private wooded setting. Three bedrooms, 2½ baths, two fireplaces. Beautiful! \$178,900. (644-6300) 193663



WALK TO DOWNTOWN BIRMINGHAM from this well maintained 3 bedroom colonial. Marble living room fireplace, oak parquet floor in family room. Fenced yard features patio and nice landscaping. \$149,900. (644-6300) 191153



CREATIVE FINANCING, competitive down payment on Land Contract/second mortgage. Borden built colonial located in City of Bloomfield Hills in a prime subdivision. Ten years old. Immediate possession. (644-6300) 185827



CONVENIENT LOCATION. Two bedroom Berkeley condominium has central air, large private storage room in basement and private washer and dryer. New windows and roof shingles. Near transportation. \$51,900. (644-6300) 193330



FINE CONDO LIVING close to the amenities of downtown Birmingham. Elevator service from lobby to all levels. Nice views with 2 bedrooms, 2 baths, dining room. Private locked storage in basement. \$124,500. (644-6300) 191388



PINE LAKE FRONT. Four or five bedroom, three full bath farmhouse located on the point of beautiful interlaken with views across the lake. One of the few sandy beaches on Pine Lake. Lakeside front porch. Three car garage. (644-6300)



HANDSOME TROY COLONIAL. Numerous updates in 1991. Furnace, central air, shingles, siding, remodeled family room with newer fireplace. Deck. \$124,900. 2350 Waltham, N. of Watties, W. of John R. (689-7300) 194674



CITY OF BIRMINGHAM. The large front porch welcomes you to this darling two bedroom, two bath Michigan bungalow. Family room or garden room great for children. Large rec room with bar. Many updates. \$91,000. (644-6300) 195997



THE HEATHERS with its many amenities has been extremely successful. Here's a nice unit with living room with fireplace, dining room, two bedrooms and 2½ baths. Basement. Backs to nature area. \$199,500. (644-6300) 190476



GORGEOUS LAND! 158'x144' with lake privileges on "all sports Walnut Lake." Birmingham Schools, family oriented neighborhood. Four bedrooms, two baths. Hurry, this one won't last. \$112,800. (851-5500) 192850



VERY IMPRESSIVE four bedroom colonial. The builder has what today's buyers want — a floor plan for everyday living and gracious entertaining. Four fireplaces. Formal circular and rear staircases. STately! (644-6300) 195688



SPACIOUS BLOOMFIELD TOWNHOUSE. This end unit has formal dining room, family room with fireplace, three bedrooms, 2½ baths and neutral decor. Central air. Basement. Probably our best buy! \$114,900. (644-6300) 193600



TOO MANY UPDATES TO LIST. Townhouse style condo has three bedrooms, 2½ baths, finished basement, security system. Freshly painted and decorated. Seller to pay \$2,500 towards closing costs. \$79,900. (689-7300) 194616



SPECTACULAR LAKEFRONT CONDO. Enjoy the sunsets from the patio and decks on all three levels. This four bedroom, 3½ bath end unit has extensive marble and granite. Finished lower level. Central air. Dock. (644-6300) 191148



Weir, Manuel, Snyder & Ranke, Inc.

• HOURS weekdays from 8:30 in the morning until 8:00 in the evening.
• Saturday until 5:00 P.M.
• Sunday afternoons to 5:00 P.M.

298 South Woodward
7285 Orchard Lake Road
4700 Rochester Road
1205 West University Drive
498 South Main Street

Birmingham Bloomfield Hills
West Bloomfield Farmington Hills
Troy Birmingham Bloomfield
Rochester Rochester Hills
Plymouth Northville Canton Novi

• 644-6300
• 851-5500
• 689-7300
• 651-3500
• 455-6000