

Select Properties from Real Estate One.

Michigan's largest real estate company



ORCHARD LAKE
ORCHARD LAKE MINI ESTATE. Replanted 1 plus acre blend of grounds, lake and Georgian colonial. Rare find. \$1,350,000 (WAL) 651-1900



WEST BLOOMFIELD
WOODCLIFF LAKEFRONT. Breathtaking view of lake & forest. Detached ranch condominium in suburban resort. 1300 sq. ft. of decking, walkout lower level, entertainment/activity center, jacuzzi, marble foyer, granite island kitchen. \$585,500 (WBL) 681-8700



ORCHARD LAKE
ELEVATOR-BARRIER-FREE. Walk-out Ranch on huge, private lot. 6 bedrooms, 5 1/2 baths, 3 car attached garage, finished lower level could be a completely separate in-law apartment. In-ground pool and hot tub. \$549,900 (187893) 644-4700



BLOOMFIELD HILLS
ELEGANT & GRACIOUS. This French manor home has all the expected amenities: Marble foyer, sweeping staircase, paneled library, two fireplaces on over an acre. \$471,000 (183290) 644-4700



WEST BLOOMFIELD
WALNUT LAKEFRONT. 3 bedroom Contemporary nestled in trees. Large deck overlooking all sports lake. 2 story foyer. Open floor plan. Track & recessed lights. 40 ft. dock. \$437,000 (191375) 644-4700



BLOOMFIELD HILLS
LUXURIOUS WABEEK. Stunning Contemporary decor. Beautiful, bright kitchen, 4 bedrooms, impressive foyer & family room. Bloomfield Schools. Cul-de-sac setting. You have arrived! \$449,000 (192044) 644-4700



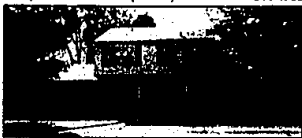
WEST BLOOMFIELD
WALNUT LAKE PRIVILEGES. Contemporary 4 bedroom Ranch with private upper suite with loft, sitting area. Finished walk-out custom designed. Lots of extras. Bloomfield Hills Schools. Must be seen. \$410,000 (185177) 644-4700



BLOOMFIELD HILLS
HUNT CLUB AREA. Large 5 bedroom Colonial with 3 fireplaces, vaulted ceiling Great room, open floor plan, many custom features, multiple decks and pool. \$399,000 (191253) 644-4700



FARMINGTON HILLS
COPPERWOODS CAPE COD. Beautiful Cape Cod on the end of cul-de-sac on private park-like setting. Master suite on first floor, 3 bedrooms, 2 full baths up, separated by bridge, 3 car garage. \$334,900 (COP) 851-1900



BLOOMFIELD
BLOOMFIELD VILLAGE. Custom built 4 bedroom colonial. Deluxe 45 ft. pool. Three fireplaces. Finished rec room. Formal dining room. Rear entrance garage. Near all Birmingham schools. \$329,850 (192044) 644-4700



TROY
STUNNING!! 4 bedroom, 2 1/2 bath Tudor with gourmet style kitchen overlooking lovely professionally landscaped yard. Master suite with dressing area, tub & separate stall shower. Beautiful family room w/fireplace and wet bar. \$299,500 (183034) 644-4700



FARMINGTON HILLS
EXECUTIVE COLONIAL. Magnificent 4 bedroom, 3 1/2 bath colonial with 1st floor master suite in Rolling Oaks West. 3 car side entry garage with extra wide driveway. Great room, den, impressive entry. \$294,900 (HUN-IND) 477-1111



FARMINGTON HILLS
BEST AT POTOWATOMI CREEK. 3 bedroom, 3 1/2 bath condo townhouse with custom elegance on all 3 levels. Superb in all details. Appliances, neutral decor, sprinkler system, site - everything worth the difference. \$279,000 (LEG) 477-1111



BIRMINGHAM
DESIRABLE IN-TOWN AREA. Tree-lined street of individual custom homes. Charming 4 bedroom English colonial features hardwood floors, formal dining room, gracious fireplace living room, library, plus much more. \$267,500 (192044) 644-4700



NOVI
MINI NOVI ESTATE. All the space you'll need in this elegant family colonial. Spacious interiors. Dramatic marble foyer and curved stairway. Quiet acre plus setting. Novi Schools. \$259,000 (183034) 644-4700



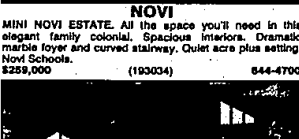
WEST BLOOMFIELD
PEBBLE CREEK VILLAGE. Reduced! Ranch style living over 2400 sq. ft. 1st floor master and 2 second floor bedrooms. Designer built-in units, gourmet kitchen, custom closets, marble foyer, brick courtyard. Perfectly running. \$242,900 (PCV) 681-5700



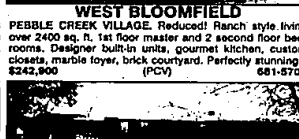
BINGHAM FARMS
SLEEK & SOPHISTICATED TOWNHOME in Bingham Woods. Featuring a white Euro-style kitchen, 2 bedrooms, 2 1/2 baths, family room. Basement has 30' wall of cedar closets! All appliances & a slate pool table included! \$239,000 (LEG) 477-1111



ROCHESTER HILLS
NEW CONSTRUCTION. Two-story contemporary, entry level master suite with 3 bedrooms up. Central air, vacuum and sprinklers. Beautiful location in country sub. \$238,900 (423RD) 652-6500



FARMINGTON HILLS
PREMIUM HOUSE & PROPERTY. Two years new. Conventional colonial, country kitchen and the price is right. \$235,500 (HAR) 651-1900



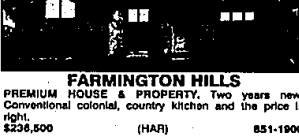
WHITE LAKE
WHAT A BUY! Drastic reduction on this beautiful Cedar Island canalfront, 4 bedrooms, 2 1/2 baths, finished walkout, fireplace, wet bar, skybridge, library - a beauty of a home. Come see for yourself. \$233,500 (784R) 363-8307



ROCHESTER HILLS
CONTEMPORARY CLASSIC. Loaded with quality features. 3 bedrooms have walk-in closets & private baths. Swim, tennis, golf & clubhouse. \$239,500 (89BAUG) 652-6500



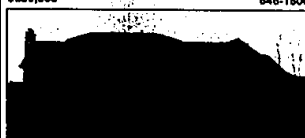
BEVERLY HILLS
SPACIOUS UPDATED HOME. Waiting for you to move in. 3 bedrooms, 2 1/2 bath with attached 2 1/2 car side entry garage. Over-size lot on a private cul-de-sac in wonderful family neighborhood. Birmingham Schools. \$229,000 (191775) 644-4700



FARMINGTON HILLS
WOODCREEK FARMS. Original owner offers this quality built brick ranch on almost 2 acres. Home features 3 bedrooms, 2 fireplaces, triple garage and finished rec room with wet bar. \$225,000 (WEL) 651-1900



WIXOM
WONDERFUL OPPORTUNITY in Wixom. 1.25 acres zoned commercial but currently used as residential. Early 1900's farmhouse with four bedrooms, 2 1/2 baths, hardwood floors, oak trim & much more. \$210,000 (4772OPT) 363-8307



ROCHESTER HILLS
CUSTOM CONTEMPORARY With all the extras. Over 3,500 sq. ft. of built-ins, marble, hardwoods & slate. Immaculate condition. 4 bedrooms, 3 1/2 baths, very posh. \$199,900 (NCA) 651-1900



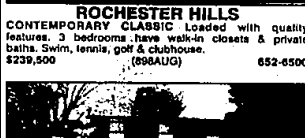
FRANKLIN
PICTURESQUE CAPE COD With two lots in Franklin Village. New kitchen and roof. 4 bedrooms, formal living and dining rooms. Birmingham Schools. \$199,000 (182567) 644-4700



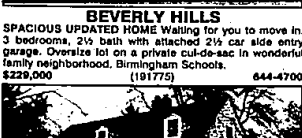
WEST BLOOMFIELD
STOP LOOKING - IT'S HERE! Five bedrooms, 2 1/2 baths, library, largest lot in the sub, formal living & dining rooms plus a family room! Updating throughout, new kitchen, paint & decor. Move right in. \$192,000 (HOB) 681-5700



FARMINGTON HILLS
REDUCED \$10,000! Old world quality custom built brick and stucco Tudor on acre wooded lot in Heather Hills. 26 ft. master bedroom with marble fireplace, dressing room, bath, balcony and beamed cathedral ceiling. \$189,500 (VAL) 477-1111



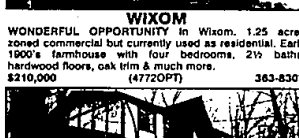
FARMINGTON HILLS
SPICK AND SHAN RANCH. Move right in, neutral decor, many newer features. Vertical & horizontal blinds, hardwood floors, lovely floor plan, great location. \$188,500 (185991) 644-4700



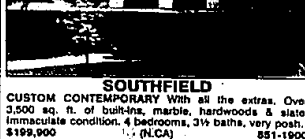
ROCHESTER HILLS
ONE OWNER COLONIAL. Features traditional open floor plan with large eat-in kitchen and family room off the kitchen with raised hearth fireplace. \$179,000 (190974) 644-4700



ROCHESTER HILLS
SHARP TUDOR. 3 bedroom colonial with many updates. Large eat-in kitchen, formal dining room, family room with fireplace, central air, deck and sprinklers. \$169,900 (GE) 651-1900



WEST BLOOMFIELD
OUTSTANDING HOME. Totally renovated, amidst towering pines. 2540 sq. ft. 4 bedrooms, Euro-style kitchen. \$159,000 (RED) 651-1900



FARMINGTON HILLS
VERY SHARP Contemporary colonial, all neutral decor, open floor plan, move-in condition. Must see! \$188,000 (27BAL) 828-1300



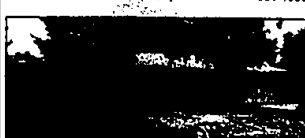
ROCHESTER HILLS
EASY MOVE! Almost new 4 bedroom, 2 1/2 bath colonial. Central air, hardwood floors and more. \$158,900 (890W11) 652-6500



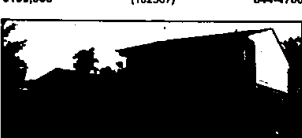
ROCHESTER HILLS
PINE TREE SETTING. 4 bedrooms, 2 1/2 baths, large family with fireplace, ceramic foyer, hardwood floors. \$155,900 (148CLA) 652-6500



WEST BLOOMFIELD
OUTSTANDING HOME. Totally renovated, amidst towering pines. 2540 sq. ft. 4 bedrooms, Euro-style kitchen. \$159,000 (RED) 651-1900



FARMINGTON HILLS
SPICK AND SHAN RANCH. Move right in, neutral decor, many newer features. Vertical & horizontal blinds, hardwood floors, lovely floor plan, great location. \$188,500 (185991) 644-4700



ROCHESTER HILLS
ONE OWNER COLONIAL. Features traditional open floor plan with large eat-in kitchen and family room off the kitchen with raised hearth fireplace. \$179,000 (190974) 644-4700



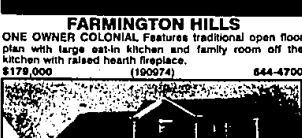
ROCHESTER HILLS
SHARP TUDOR. 3 bedroom colonial with many updates. Large eat-in kitchen, formal dining room, family room with fireplace, central air, deck and sprinklers. \$169,900 (GE) 651-1900



WEST BLOOMFIELD
OUTSTANDING HOME. Totally renovated, amidst towering pines. 2540 sq. ft. 4 bedrooms, Euro-style kitchen. \$159,000 (RED) 651-1900



FARMINGTON HILLS
SPICK AND SHAN RANCH. Move right in, neutral decor, many newer features. Vertical & horizontal blinds, hardwood floors, lovely floor plan, great location. \$188,500 (185991) 644-4700



ROCHESTER HILLS
ONE OWNER COLONIAL. Features traditional open floor plan with large eat-in kitchen and family room off the kitchen with raised hearth fireplace. \$179,000 (190974) 644-4700



ROCHESTER HILLS
SHARP TUDOR. 3 bedroom colonial with many updates. Large eat-in kitchen, formal dining room, family room with fireplace, central air, deck and sprinklers. \$169,900 (GE) 651-1900



WEST BLOOMFIELD
OUTSTANDING HOME. Totally renovated, amidst towering pines. 2540 sq. ft. 4 bedrooms, Euro-style kitchen. \$159,000 (RED) 651-1900



Our 62nd Year

"Real Estate One Continued on Back of this section"