

## TRAVEL

68\*\*

11:57 Monday, February 10, 1992

## Vibrancy rains on misty city

By Melanie Mavrides  
New York Times Syndicate

This time of year Seattle weather forecasters could take a long vacation and few people would miss them.

Save the freak snowstorm. Seattle's winter is predictable gray and drizzly, with clouds obscuring the Olympic and Cascade Mountains that rim the city.

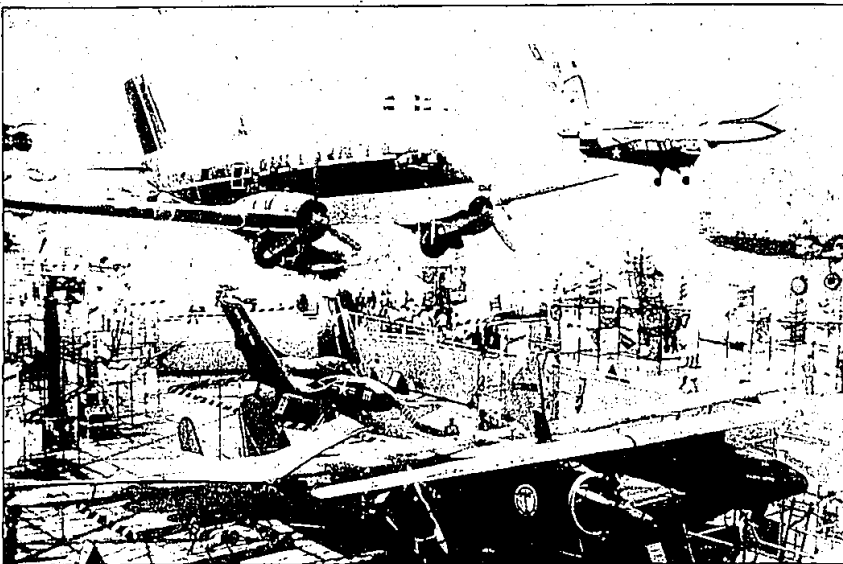
In this land of mist and moss built on Puget Sound, true-blue Seattleites are easily recognizable: They don't bother with umbrellas.

But the weather does little to dampen the city's vibrancy. With bright neon signs shimmering off wet pavement and the aromatic scent of locally roasted coffee wafting from cozy cafes, Seattle is full of life in January and February.

The newly opened Seattle Art Museum, at 100 University St. and First Avenue, is the latest cultural addition to the skyline. The limestone building, designed by Robert Venturi, is decorated with vertical fluting and a playful band of colorful tiles and stands out against the featureless office buildings nearby.

Its displays of Northwest Native American and African art are among the nation's best and next month the museum will open galleries of Western and Asian art. The Japanese gallery will feature a tea house commissioned by the Urusinski Foundation of Osaka, Japan.

Recommended admission to the museum is \$5; free on the first Tuesday of every month. It is open Tuesday to Saturday from 10 a.m. to 5 p.m. (to 9 p.m. Thursday); Sunday, noon to 5 p.m. For more information



Photos courtesy of Seattle-King Co. News Bureau

## Seattle: Gray skies, neon spirit



In Pioneer Square, Seattle's historic area, many 1890s-era buildings have been renovated.

call (206) 654-3100.

To boost tourism in the slow rainy months a "Supersaver" program gives discounts of up to 50 percent on 18 hotels in the city to March 31. With the hotel discount comes a coupon book for cultural events, retail outlets and restaurants. For more information call (800) 448-6540.

## SIGHTSEEING

Visitors may find it hard to leave the maze with 8-foot-high walls at the Pacific Science Center, at 200 Second Avenue, North, at the Seattle Center, home of the Space Needle. In fact, it takes from 20 minutes to an hour to get through the 3,000-square-foot puzzle.

Another recently opened exhibit features robotic life-size dinosaurs. An Imax film, "Ring of Fire," documents the earthquake-and-volcano-prone Pacific Rim.

Admission to the center is \$5; \$4 for seniors and children ages 6 through 13; \$3 for children ages 2 to 5. Laser shows and Imax films cost \$1 more. For more information call (206) 445-2001.

Unlike many Western cities,

Seattle's center is best explored on foot. First Avenue, lined with eclectic shops and restaurants, is a good starting point.

The city also provides free bus service up and down the avenue. Shopping at major retail stores is just up the hill at Westlake Mall, at Fourth and Pike Streets.

At the north end of First Avenue is Pike Place Market, possibly the grandest open-air market in the country. Its colorful swirl of vegetable stalls, fish markets and views of Puget Sound, plus the spicy aromas of ethnic food emanating from restaurants and cafes, is a celebration of life on the Pacific Rim.

At Pioneer Square, one of the city's oldest sections, where pioneers rolled giant logs down the original "skid road," a giant totem pole stands guard near an ornate iron pergola. The square is lined with art galleries, shops, Oriental rug outlets and nightclubs that regularly host blues and rock bands.

## FOR SKIERS

Excellent skiing can be found just a few hours from the city, but the

snow can quickly go from powder to paste if temperatures rise and it rains.

The best area within two hours of the city is 7,000-foot Crystal Mountain, on the border of Mount Rainier National Park. From its 43 runs and 10 chair lifts — including a high-speed chair lift to the top of Crystal Peak — the views of the Cascades are breathtaking.

Lift tickets at Crystal Mountain are \$16 weekdays; \$28 on weekends and holidays. For more information call (206) 663-2265.

Another local favorite is Stevens Pass, about 70 miles northeast of Seattle. It has great views and its terrain is challenging though not as diverse as Crystal. Still, it's close and affordable and has night skiing.

Tickets at Stevens Pass for an eight-hour session, starting at 9 a.m., 11 a.m. or 2 p.m., are \$10 Monday and Tuesday, \$15 Wednesday to Friday (\$2 more for longer skiing) and \$25 on weekends. For more information call (206) 973-2441.

The Mount Baker Ski Area, three hours north of Seattle, gets an amazing 750 inches of snowfall a year. Tickets are \$15 weekdays and

A DC-3 is suspended from the ceiling at the Museum of Flight in Seattle, which also displays America's first supersonic jet fighter.

\$23 weekends. For more information call (206) 734-6771.

## WHERE TO STAY

The Inn at the Market, at 86 Pine St., is one of the city's most popular hotels. In the market area the compact hotel has 65 spacious rooms — some with a view of Elliott Bay — and the hallways smell of sweet herbs in window boxes. The rooftop balcony has a spectacular view of the bay and the Olympic Mountains.

The hotel has room service but no restaurant, but it's hardly an issue considering you're in the heart of the market. Doubles start at \$95 and will go up to \$109 in March; prices increase with the view. For more information call (800) 446-4484 or (206) 443-3600.

The elegant Sorrento Hotel, at 900 Madison St., about six blocks from downtown, was built in 1909 and was modeled after a castle in Sorrento, Italy. The 76-room hotel (42 are suites) is participating in the Supersaver program through March. The regular rate of \$140 for a double room will be \$95. For more information call (800) 426-1265 or (206) 622-6400.

At the Alexis Hotel, at 1607 First Ave., with 54 rooms decorated with antiques, guests can luxuriate in whirlpool jets in their bathroom tubs or in a steam room. Some suites have wood-burning fireplaces. Under the Supersaver package a standard double room will drop from \$165 to \$115. For more information call (800) 426-7033 or (206) 624-4844.

Budget Choice: The Westcoast Yarnell Hotel, at 620 Stewart St., is a remodeled modest 165-room hotel that is convenient to downtown. A double room, normally starting at \$85, is \$65 under the Supersaver plan. For more information call (206) 441-4200.

## WW II veterans can take nostalgia tours of England

By Gene and Adele Malott  
New York Times Syndicate

During World War II, when England was "the un-sinkable aircraft carrier" used by the Eighth and Ninth U.S. Air Force to launch thunderous raids against Germany, Yank airmen and the stolid residents of East Anglia formed the kinds of friendships that can only be forged in war.

In the years since the war, English groups such as Friends of the Ninth (FOTN) and Buddies of the Ninth (BOTNA) have restored some airfields, set up World War II museums and acted as liaisons for tour groups.

Now, in 1992, 50 years after American airmen first arrived, the East Anglia Tourist Board is inviting the Yanks back, hosting a year-long "Return to England" festival. It includes special tours, exhibitions and events near hundreds of air-base sites from Royal Tunbridge Wells to East Kirby.

Motor-coach tours will take visitors to the U.S. Air Force Reunion Airshow, so-called Glenn Miller nights and celebration headquarters in Duxford and at the American Military War Cemetery at Madingley.

These are all described in a brochure, "Return to England Tours," published by the East Anglia Tourist Board.

Groups may arrange tours through the board. For a free copy of the tour book write Jane Sullivan, East Anglia Tourist Board, Toppsfield Hall, Hadleigh, Suffolk IP7 5DN, England.

Cruise Alaska  
PRINCESS CRUISES

"The Love Boat"

Save up to \$400 per couple if booked by Feb. 14, 1992.



Call now and save!  
Only By Sea, Inc.  
645-8900

YOU MAKE THE NEWS HAPPEN

**Wheels Inn**  
Resort & Conference Centre  
INVITES YOU TO  
GO APE WITH  
**BANANARAMA**  
GETAWAY

At the end of the road, just off the main highway, is a small, quiet, and cozy resort. It's a perfect place to relax and enjoy the view. The resort is surrounded by lush tropical gardens and has a beautiful swimming pool. It's a great place to spend a few days with your family or friends.

Call 1-800-265-5257  
Call 1-519-436-5500

615 RICHMOND ST. CHATHAM, ONT. TAKE EXIT 81 OFF HWY. 401

**CARIBBEAN WHITE SALE!**  
GET MORE DEEP CARIBBEAN FOR LESS.

FLY FREE!  
**\$795**

Regency offers more ways to enjoy 7-day Caribbean cruising and more ways to save. Explore the beautiful Western Caribbean from Tampa (now thru April 19) or sail deep into the Caribbean from San Juan (now thru May 24). Relax aboard one of our spacious, comfortable ships. Regency cruising means attentive European style service, superb cuisine prepared by French master chefs, great entertainment and more!

**50% OFF COMPANION FARE ON REGENT STAR!**  
Your companion pays half fare when you pay full fare (starting at \$1195) on the Regent Star Panama Canal/Caribbean cruise and you both fly free! Offer available now thru April 26.

Accommodations	Regent Star	Regent Sun
Double Cabin	\$795	\$890
Double Cabin (with balcony)	\$995	\$1090
Double Cabin (with balcony) (with veranda)	\$1195	\$1290

For reservations, call your travel agent. For a brochure, call Regency at 212-972-4499.

**REGENCY CRUISES**