

# Local projects reap design awards for masonry

Hillside Elementary School in Farmington Hills, Merrill Park Townhomes in Birmingham and the 42nd District Court/Macomb County Sheriff's substation in Romeo have won awards from the Masonry Institute of Michigan for quality design involving stonework or brickwork.

"The purpose of the awards is to honor works of distinction, works of Michigan architects and to bring to the public eye works of distinction," said Daniel Zechmeister, executive director of the Institute.

The American Institute of Architects Michigan co-sponsored the awards. A panel of architects from Boston served as jurors. Forty-seven

buildings from around the state that had been completed since May 1989 were nominated.

Hillside Elementary, designed by Greiner Inc. of Grand Rapids, was constructed on a slope in three levels. Flat areas on the 10-acre site were preserved for playgrounds and parking.

It was noted that the architectural theme is compatible with the surrounding upscale residential area.

Masonry was selected because of its residential character. Jumbo or utility bricks were used for scale and cost savings. Extensive brick patterning makes the building playful and colorful.

JUDGES WERE impressed with the lively environment created by multiple colors and finishes of masonry. The internal street brings the outside in with similar use of masonry and natural lighting, they said.

Merrill Park Townhomes, a seven-unit residential development, was designed by Victor Sarko and Associates Architects of Birmingham.

Each unit is 26 feet wide and set close to the sidewalk with landscaped courtyards front and back enclosed by iron fences.

The ground floor is a half level above street level. Attached garages are a half level down from the main level, creating stone terraces on top

which are accessible from the ground floor and which become outdoor extensions of the main living space.

The Boston jurors, familiar with the Buckminster Fuller, reportedly loved the design. The project recognizes that traditional urban residential architecture still has a relevance and significance, they said. Judges also praised the modern interpretation of traditional masonry architecture.

THOMAS STRAT & Associates of Troy used a contemporary interpretation of three Roman designs for the 42nd District Court, Sheriff's sub-

station in Romeo.

Polished cement blocks 8-by-16 inches were used to simulate the textures and sense of permanent cut stone like marble and granite used by the ancients at a fraction of the cost.

Judges complimented the discreet, effective use of masonry and the presence of a judicial public facility with little apparent context to other buildings in the area.

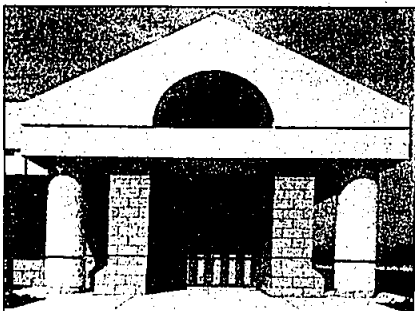
The jurors also praised the design that acknowledges the formality of the judicial function with the efficiency of support space.

Two other buildings with no connections to Observer & Eccentric

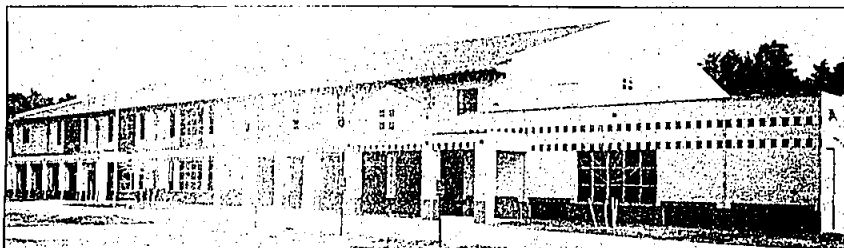
communities, the Sherer Hall restoration at Eastern Michigan University in Battle Creek, also won Masonry Awards.

Eight architectural students from Lawrence Technological University including Christopher Garrison of Farmington Hills and Alan Goschka of Southfield won awards in the biennial masonry design competition sponsored by the Institute and university.

Garrison placed first and Goschka fourth in the senior division. Their mission was to design a residential highrise on the site of a former cement plant on a riverfront.



Polished cement blocks were used by Troy architect Thomas Strat to simulate a classical Greco-Roman appearance in a district court/sheriff's department substation in Romeo.



Bricks of different finishes and colors create a lively environment for children at Hillside Elementary School in Farmington Hills.

## SHORES OF COMMERCE

CUSTOM BUILT LAKE ACCESS HOMES on Commerce Lake

Starting From **\$149,900\***

**CONTEMPORARY and TRADITIONAL STYLES**  
152' WATER FRONTAGE

Features Include:

- 3 Bedrooms
- 2 1/2 Baths
- Full Basement
- Fully Carpeted
- 2 car attached Garage
- Family Room with large fireplace
- Kitchen with built-ins and eating area
- Energy Saving Furnace
- Full-size driveway
- Walled Lake Sheds
- And much, much more

Brokers Welcome  
Fixed Rate 30 year, no points on model  
OF Bristow Road Road Between Oakley Park & Shores on Commerce Lake

**DEWITT**  
For more information call: **559-7300**  
MODEL OPEN Mon - Fri 1-6 Sat - Sun 1-5 (Closed Thursday) Call 363-4120

## TARA

4 bedrooms, 3 1/2 baths, 2 story Great room with balcony, numerous classical details, custom brass light fixtures, huge closets, fully carpeted, all appliances included in white on white kitchen, large lot, professionally landscaped, 10 year warranty, shown by appointment, located 7 miles east of Dequindre off 16 Mile. \$419,000

**J. P. BABCOCK Co-Builder**  
**445-1660**

## Now's Two Best...Quality Homes

**BRADFORD at NOVI**

From...\$289,900  
Northville Schools  
Premium 1 1/2 Acre Homesites  
Quality Custom Built Homes  
Will Build to Suit  
Located on Tah  
Just South of 9 Mile  
Model Open 12-6  
Closed Thursday  
contact Kathleen  
(313) 380-8888

**WESTMINSTER VILLAGE**

From...\$159,900  
Novi Schools  
3 & 4 Bedrooms  
Dramatic Cathedral Ceilings  
Library - 2 1/2 Baths  
Located on Haggerty  
Just South of 10 Mile  
Model Open 12-6  
Closed Thursday  
contact Red  
(313) 442-2626

**Singh Development Co., Ltd.**

## WOODLYNNE

AT BINGHAM FARMS

At Woodlynn of Bingham Farms we believe a fine home should reflect not only the personal expression of its owners past achievements, but also the embodiment of future aspirations.

Now you may select from a few of the most desirable estate sites in Southeast Michigan.

Woodlynn is located in the Birmingham School District.

A representative of the David Jensen Corporation, developer, will be on site this coming Saturday from 1 p.m. to 4 p.m. and again on Tuesday and Thursday from 3 p.m. to 6 p.m. to walk the property with you. If you wish, you may telephone 540-8880 to schedule a more convenient time to visit.

Woodlynn is the location of the 1989 Detroit Symphony League Show House and the winner of the 1990 Builder Magazine Grand Award for Design.

## John Richards

captures the essence of executive living

*Finely Crafted Custom Homes*

*Historic Restoration and Expansion of Existing Residence*

*Limited Edition Neighborhoods with the Atmosphere of a Private Club*

**South Shores**  
Estates on Pine Lake

This one of a kind site on Pine Lake is electronically guarded 24 hours a day for privacy. Boat docks, a swim club and spa are included for exclusive use by residents. Extraordinary homes from \$600,000. Model available for your custom finish selections.

**Birmingham Club**

Birmingham Club Estates is a scheduled single family subdivision located away in the woods, bordering Highland Hills Country Club and the Birmingham Athletic Club. Residents enjoy access to Bloomfield Hills schools and other district advantages. Model offers opportunity for fast occupancy. Walk out homesites available for custom design. Priced from the mid \$400's.

**Whispering Pines**

The ancient pines and thick woods off Long Lake Rd. and Lahser Rd. in Bloomfield Township provide an impressive backdrop for these stunning homes. All are meticulously designed with custom master suites, vaulted ceilings, gourmet kitchens and other outstanding custom features. Spectacular homes from \$700,000. Model nearing final stages of construction.

**Lahser Homesite**

Bloomfield's most extraordinary custom building site. One and a half acres of highly contoured woodlands. A swiftly flowing stream winds through the back of the property. A private road entrance with 500 feet of setback creates privacy and prestige like no other.

**John Richards**  
DEVELOPMENT CORPORATION

Call 540-4232 for information or to make an appointment to see any of John Richards' Signature Communities