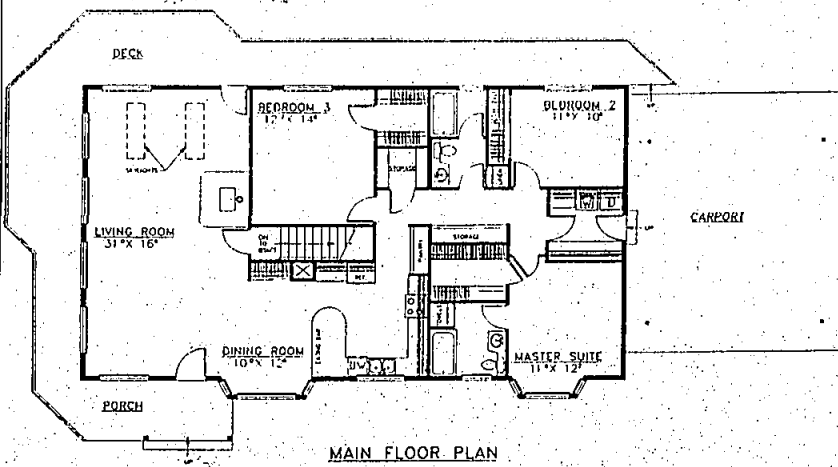


MARIANNA



MAIN FLOOR PLAN

## House features wrap-around appeal

From the front, the Marianna looks almost like a ranch home with two bay windows and a gabled front porch. But what you see is only half of what you get.

This floor plan is designed for construction on a lot that slopes down at the back and to the left. All of the family living space is on the main floor, the portion of the home that's visible from the street. But there's also a full daylight basement below.

One section of it is a garage and workshop. The rest is unfinished and can be used for storage. Plumbing and wiring are already in place for further development when needed.

A wide deck wraps around three side of the home, inviting outdoor living. The living room has

many windows to take advantage of the view. The far end of the room is warm and bright, with skylights providing additional illumination.

The large country kitchen faces out toward an eating area featuring a bay window. An eating bar provides separation and doubles as a buffet on special occasions.

Bedrooms are clustered together. The master suite has a bay window, private bath and large walk-in closet.

For a study plan of the Marianna (400-05), send \$7.50 to: Landmark Designs, P.O. Box 2307, Eugene, Ore. 97402. (Specify plan name and number when ordering.)

## LOCATION LOCATION LOCATION

In beautiful Farmington Hills



River Pines Condominiums presents the ALL NEW PLANS for 1992

New Models Now Open

Starting in the high 140's

9 Mile & Drake, Farmington Hills

Daily 1-6, Weekend 12-6, (Closed Thurs.) 474-1050



River Pines  
condominiums

Help us make  
bigger steps  
in the fight  
against AIDS



There's no way to prevent AIDS. No way to predict it. Not yet.

But there is hope. With your help we can find the cause and the cure.

Donations of your time and dollars will make a difference. And we can make bigger steps to fighting AIDS.

The Southeast Michigan  
Chapter of the National  
AIDS Foundation  
For more information  
or to volunteer your time, call  
(313) 494-0222  
or toll-free (800) 221-AIDS



## Where Do Plymouth Residents Move To?

Plymouth, of Course!

And The Reasons Are All Right Here  
At Woodlure North.

Luxurious quality-built homes on spacious natural lots make Woodlure North one of suburban Detroit's most desirable subdivisions. Numerous dramatic floor plans, vast kitchens and master bedroom suites and more. Come share in the excitement. Visit our decorated models today.

Homes start at \$289,900

Phone 454-1519

Hours Daily 12-5  
Closed Thursday

Brokers Welcome



Located on Ann Arbor Road just east of Rock Road

Southeast Lake Community by The Selective Group

Phase III Of These Fabulous Homes Now Open!



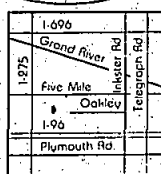
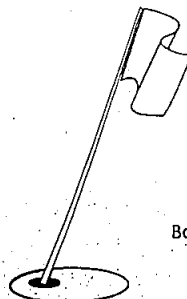
## LIVONIA WESTERN GOLF ESTATES

A Community of  
99 Single Family  
Homes.

- Offering:
- Three & Four Bedroom Colonials
  - Ranches
  - Cape Cod (Master Bedroom - 1st Floor)

Base Lots - Are 70x120

Park-like cul-de-sac  
lots available



Models Open  
Weekdays 1-6 pm  
Weekends 1-5 pm  
(Closed Thursday)

Model: 458-3755  
Office: 422-7849

Stop by and see these  
quality homes built by  
Cambarne Construction

Choo-Choo-Choose Classified! BUY SAVE SELL BUY SAVE  
With O & E Classifieds, you're always on the right track! All aboard for savings!



## WHY RENT - BUY NOW WITH LOW INTEREST LOANS FHA APPROVED

2 BEDROOM - 2 BATH UNITS

Tax  
deduction.

FROM  
\$68,500

- 3 Floor Plans
- Private Entrances
- GE Appliances
- Cathedral Ceilings
- Carpet

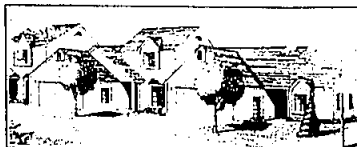
Open Daily 12-5 - Closed Thursday

981-6550

SALES BY CENTURY 21, HARTFORD SOUTH, INC.



Fox Run  
CONDOMINIUMS

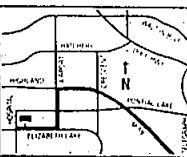


Custom Crafted Condominiums

Located in the Beautiful Woods of Waterford

Nestled among the beautiful lakes of North Oakland County, Fox Run Condominiums offers its home owners a quiet, peaceful setting within minutes of a variety of lakes, golf courses and wooded trails. Custom crafted 2 and 3 bedroom condominiums with attached 2 car garage make Fox Run the right choice of today's home owner.

Fox Run Condominiums where quality is a tradition



West of M-59 on the Northeast  
Corner of Elizabeth Lake Road  
and Hospital Road

from  
\$108,900

Open 12-6 Daily  
closed Thursday

(313)

683-9100

Brokers Welcome