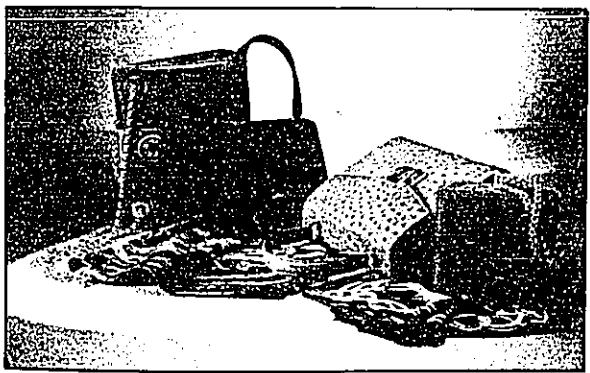




JIM JACOBSON/STAFF PHOTOGRAPHER

Stylish warm-up: The women's Anorak-style jacket by Jez of Montreal is made of soft English lambskin. The three-quarter-length jacket has a drawstring waist, snap cuffs and a detachable fox-trimmed hood (\$719 leather/\$519 suede). The men's jacket by J. Park Couture is made of New Zealand lambskin. The three-quarter-length jacket has a drawstring waist, two-way zipper and a zip-out Thermolite lining (\$439). At Laszlo's Leathers, Birmingham.



Accessorize for fall: From front to back — red nubuck square bag with snap closure (\$175); rectangular ostrich bag with signature "T" clasp (\$2,600); brown velvet evening bag with Back to Glamour accent (\$195) and rectangular red calf handbag (\$550). Also shown, silk crepe de chine 36-inch "Ribbon Trellis" scarf (\$175) by Sybil Connolly and the "Coral Paisley" (\$275) 56-inch silk crepe de chine scarf. At Tiffany & Co., Somerset Collection, Troy.

TREAT YOUR KIDS TO AN OLD FASHIONED CHRISTMAS!

Featuring thousands of time tested, imaginative toys & learning activities.
NO BATTERIES • NO T.V. TOYS
Just hours, weeks and years of fun & happiness.



SALE
ON SELECTED ITEMS

Seasons Greetings from

Dolls, Dollhouses & Miniatures. Quality Toy Trains, Cuddly & Collectable Animals, Toy Soldiers, Puppets & Marionettes, Telescopes & Microscopes, Science Experiments & Supplies, Rocking Horses, Doll Carriages, Preschool Toys & Books, Ravensburger Games for Quiet Time Activity, Puzzles for Children & Adults, Brio, Playmobil, Erector Sets & Much More.



3947 W. 12 Mile in Berkley
Mon., Tues., Wed. & Sat. 10-5:30
Thurs. & Fri. 10-8
Sun. 12-4

543-3115

(Conveniently located near I-696)