

The Barton-Malow Co., general contractor for Observer Newspapers' new publishing plant, is a diversified nationwide organization which for 47 years has been solidly involved in the building of metropolitan Detroit.

The company is presently serving a major role in environmental control construction, including such projects as these:

Grosse Pointes-Clinton-Authority-Refuse-Incinerator in Mt. Clemens Township, the Detroit Board of Water Commissioners Scum Incinerator Building, the Detroit Metro Water Department Sludge Filtration and Incinerator Building and the Central Wayne County Sanitation Authority Refuse Incinerator additions in Dearborn Heights.

Completed Barton-Malow and Mead and Mount Division projects include the Water Filtration plant in Allen Park and the \$17 million Metropolitan Sewage Disposal plant in Denver.

Other important projects include these major air transport facilities in the Detroit and Denver areas:

United Airlines Flight Training Center at Denver's International Airport, called the best equipped commercial pilot school in the world; the Frontier Airlines operating base complex and Western Airlines' maintenance facility, both at Denver, plus the \$4 million United Airlines hangar at Detroit's Metropolitan Airport.

Through its many years of operation the Barton-Malow Co. has developed a solid organizational strength through a successful course of diversification.

The base includes major on-going construction of high-rise housing and office buildings, parking and institutional structures, educational and medical care complexes and a long-standing specialty of major automotive and general manufacturing facilities.

Barton-Malow's current list of active construction projects is indicative of the company's successful commitment to this diversification effort.

Current projects include Burroughs Corp. World Headquarters, Detroit; St. Joseph Mercy Hospital additions and alterations, Pontiac; City of Pontiac Central High School; the new hospital building of Children's Hospital of Michigan, Detroit; Detroit Department of Street Railways DSR terminal facilities (Phase 1 -- administrative and heavy maintenance buildings), Detroit.

Also, Manufacturers National Bank operations center, Detroit; Wayne State University medical campus facility, Detroit; Blue Cross/Blue Shield support facility, Detroit; St. Mary Hospital, Livonia; Detroit Osteopathic Hospital Corp. bi-county hospital office building, Warren.

Also, Detroit Federal Savings new office building, Detroit; Chrysler Corp. parts depot, Richmond, Va.; Western Electric, Inc., manufacturing and office complex; Luthern Hospital addition, Denver; National Jewish Hospital addition; University of Colorado physics building and three elementary and two junior high schools for the St. Vrain School District.

Barton-Malow has been firmly committed to community projects that benefit residents of all the area of metropolitan Detroit.

Construction of such major projects as the Ford Motor Co. Woodhaven Stamping Plant, General Motors Proving Ground Safety Test Building in Milford, Research Laboratories Computer Center in Warren, the Children's Hospital project in Detroit, the Henry Ford Centennial Library, plus many others, stand as evidence of this fact.

Barton-Malow also has a strong foundation for future service and growth.

The company has a record of more than \$1 billion in service since 1924, serving more than 600 clients in the successful completion of upwards of 30,000 jobs in general construction, maintenance, modernization, building repairs and equipment installation.

There have been many contributing factors to this successful growth and one of them is the fact that the firm always has encouraged Barton-Malow employees to advance themselves within the company.

Today practically all of the company's operating management, including the president, executive vice president and vice presidents, began in the field as common laborers. Cohesive labor relations and employee benefit programs have kept experienced personnel on the job. The average length of service for Barton-Malow's salaried employees is over 20 years.

In 1968 Barton-Malow purchased the assets of Mead and Mount Construction Co., one of Denver's oldest contractors and one of the largest firms in the Rocky Mountain area.

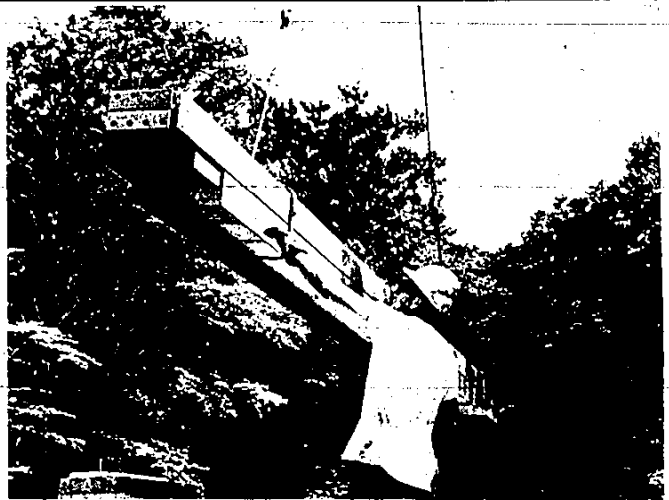
Mead and Mount was established in 1924, the same year as Barton-Malow began operation. Known for building 40 per cent of Denver's famous downtown skyline, Mead and Mount's scope of operations in the west is very similar to Barton-Malow in the eastern and middle United States.

Both firms are progressive and widely known for major commercial, institutional and industrial construction.

Equipped and staffed to move any job from blue print to completion, the Barton-Malow organization includes all of the diversified talents necessary to handle any type of project, small or large.

The company is headed by Ben C. Maibach, who joined the firm in 1938 as a construction laborer and timekeeper. His climb was steady and he was elected president in 1960.

Executive vice president is Rolland M. Wilkening who started with Barton-Malow as a construction worker in 1950 and was named to his present post in 1964.



## Barton-Malow Construction Specialists

