

The '93 Camaro: a new look

Since its introduction on Sept. 18, 1966, the Chevrolet Camaro has survived, occasionally thrived, and undergone more facelifts than Phyllis Diller.

Originally designed and built to take on the Ford Mustang, the Camaro has entered and re-entered phases of being a muscle car, econo-cruiser, and refined sports car.

At the 1993 Detroit International Auto Show, the latest version of the Camaro will be introduced. Completely redesigned, "the fourth-generation Camaro wears a sculptured, contemporary skin over hardware that's been thoroughly updated to meet the needs of today's most demanding sports car enthusiasts," said Chevrolet's press material.

The car will be available in two coupe versions: standard and the more muscular Z28. The new Camaro retains the old 101.1-inch wheelbase, but is longer, wider, and taller than its predecessor. Standard features include driver- and passenger-side airbags and an anti-lock braking system.

"Though virtually every component is all-new or significantly modified, this fourth-generation Camaro is heavily based on the previous design, which first appeared in 1982," said Road and Track magazine. "This is a radical evolution, not a clean sheet revolution."

Standard Camaros are powered by a new overhead-valve 3.4 liter V-6, which kicks out 160 horsepower at 4800 RPM. This engine can be linked with either a four-speed automatic transmission or five-speed manual.

Enter into the Z28 realm and the power increases substantially. The Z28 is powered by the 5.7 liter V8 found in the Corvette. Known as the LT1, the motor produces 275 horsepower at 5000 rpm in the Camaro: a gain of 30 horses over last year's engine. The Z28 is available in both manual and automatic transmissions.

The Camaro's interior has

GM seeks to fine-tune airbags

It can be a deadly meeting when a car meets a deer. General Motors can't do much for the deer, but the automaker is trying to fine-tune its airbag technology to assure that drivers don't become victims, too.

Air bag designers face a special problem: autos equipped with the devices must have sensors able to detect in milliseconds if a crash is severe enough to require the protection of an air bag. Michigan has 48,000 car-deer accidents annually.

"As many motorists have learned, not every vehicle collision requires the deployment of an air-bag system," said Dr. David Viano, a researcher at the General Motors Biomedical Science Department. "This system must be sensitive enough to quickly detect if the collision that is occurring will be severe enough that the occupants need the extra protection that the air bag system provides."

"Striking a deer running across a highway is certainly an unnerving occurrence, but is usually not one that requires an air bag deployment...."

GM tries to strike the right balance with low-speed crash testing with styrofoam and sand bags to simulate deer. Also, rough road tests help verify that the GM system won't trigger on harsh road surfaces or off road when an air bag deployment is not needed.

The automaker's research and accident data analysis have helped GM set an impact speed threshold for air bag deployment higher than many manufacturers, lowering the risk and expense of unnecessary deployments.

Buick has bright idea

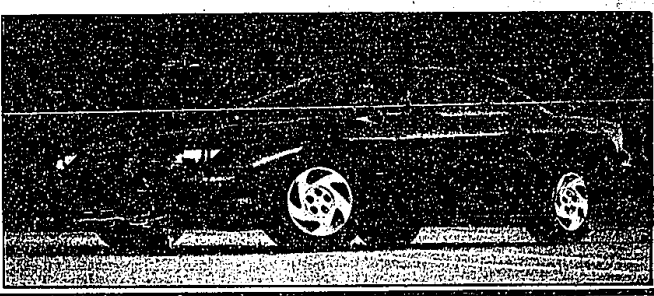
Are you in the habit of leaving your car lights on? For its 1993 Skylark, Buick is offering a system that saves battery life by automatically turning off the juice if any interior light is left on with the ignition off. Lights can be reactivated by turning the light switch on and off.

been redesigned and includes a wraparound instrument panel with analog gauges. The rear seat can fold down flat for a cargo volume index of 22.3 cubic feet.

With an estimated base price of \$17,200, Motor Trend said buyers can expect a lot for their money. The magazine mentioned its reduced interior noise, excellent braking, and cold fuel, while panning occasional throt-

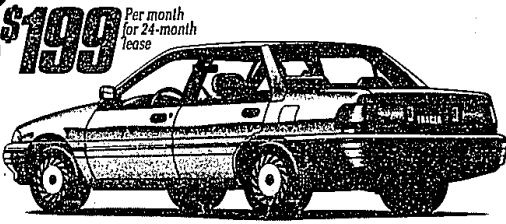
tle clunks. "While the Z28 continues to offer near-Corvette performance at below-Honda Prelude price, it now challenges the best in ergonomics, solidity, ride, and quietness," the magazine said.

Redesigned for '93, the Camaro features a standard 3.4 liter V-6, wraparound instrument panel, and 16-inch wheels.



Thursday, January 7, 1993 AUTO SHOW Page 8(C)

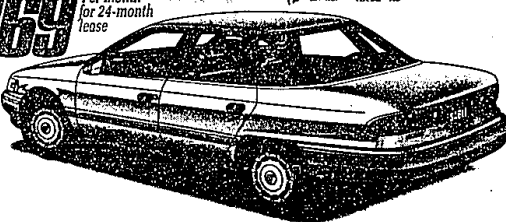
EXCITING NEW OFFERS. SMART CHOICES!



1993 MERCURY TRACER

24 Monthly Lease Payments at \$199  
Refundable Security Deposit \$200  
Down Payment \$225  
Total Cash Due at Inception \$514  
Total of Monthly Payments \$4,776

STANDARD FEATURES:  
1.9-liter 14 single-overhead-cam engine • Sequential multi-port electronic fuel injection • Power brakes • Tinted glass  
• Dual reclining front bucket seats with adjustable head restraints  
PREFERRED EQUIPMENT PACKAGE 576A:  
Automatic overdrive transaxle • Air conditioner • Dual power mirrors • Power steering • Variable speed interval wipers  
• Electronic AM/FM stereo cassette radio with integral clock

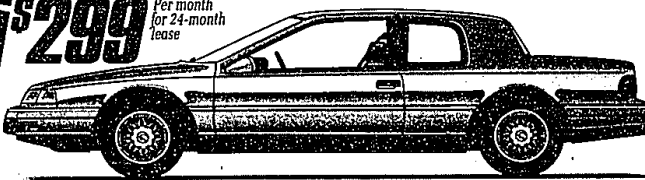


1993 MERCURY SABLE GS

24 Monthly Lease Payments at \$269  
Refundable Security Deposit \$200  
Down Payment \$225  
Total Cash Due at Inception \$514  
Total of Monthly Payments \$6,456

STANDARD FEATURES:  
3.8-liter V-6 engine • Sequential multi-port electronic fuel injection • Power rack-and-pinion variable-assist steering  
• Power brakes • Air conditioner • Tinted glass • Tilt steering column • Driver- and right front passenger-side air bag  
Supplemental Restraint System\*

PREFERRED EQUIPMENT PACKAGE 431A:  
Power side windows • Fingertip speed control • Power lock group • Electric rear window defroster • 6-way power driver's seat • Electronic AM/FM stereo cassette radio



1993 MERCURY COUGAR XR-7

24 Monthly Lease Payments at \$299  
Refundable Security Deposit \$200  
Down Payment \$225  
Total Cash Due at Inception \$514  
Total of Monthly Payments \$7,176

STANDARD FEATURES:  
3.8-liter V-6 engine • Sequential multi-port electronic fuel injection • Automatic overdrive transmission • Power rack-and-pinion steering  
• Air conditioner • Power brakes  
• Power windows

PREFERRED EQUIPMENT PACKAGE 260A:  
Power lock group • Electric rear window defroster • Tilt steering wheel • Light group  
• 6-way power driver's seat • Leather-wrapped steering wheel • Electronic AM/FM stereo cassette radio



1993 MERCURY GRAND MARQUIS GS

24 Monthly Lease Payments at \$299  
Refundable Security Deposit \$200  
Down Payment \$225  
Total Cash Due at Inception \$514  
Total of Monthly Payments \$7,176

STANDARD FEATURES:  
4.6-liter SOHC V-8 engine • Sequential multi-port electronic fuel injection • 4-speed electronic automatic overdrive transmission • Driver- and right front passenger-side air bag Supplemental Restraint System\* • Air conditioner • Power windows • Tilt steering column

PREFERRED EQUIPMENT PACKAGE 157A:  
Fingertip speed control • Power lock group • Electric rear window defroster • Illuminated entry system  
• Luxury light group