

Autobahn Motors' Auto Show Savings!!!

SEE THEM AT THE AUTO SHOW — SAVE ON THEM HERE!

- Huge Rebates
- Great Selection
- Clearance Prices
- Top Dollar for Trades
- Low Financing
- Special Leasing

OPEN SATURDAYS 10:00 A.M. TO 4:00 P.M.

Autobahn Mazda

	WAS.....\$12,759 SAVE.....\$1,359	NOW \$11,400*
NEW '93 PROTEGE Sik. #9094		
	WAS.....\$18,795 SAVE.....\$1,895	NOW \$16,900*
NEW '93 MX-6 Sik. #9021		
	WAS.....\$16,245 SAVE.....\$1,445	NOW \$14,800*
NEW '93 626 Sik. #9058		
	WAS.....\$21,187 SAVE.....\$3,787	NOW \$17,500*
NEW '92 MPV Sik. #7151 Demo		
	WAS.....\$30,550 SAVE.....\$6,000	NOW \$24,550*
NEW '92 929 Sik. #7177		

*Plus tax, title, license, includes all accessories & rebates.

1785 Telegraph, Bloomfield Hills

338-4531

Autobahn Volkswagen

	WAS.....\$9405 SAVE.....\$505	NOW \$8900*
NEW '93 FOX Sik. #5005		
	WAS.....\$24,805 SAVE.....\$1,905	NOW \$22,900*
NEW '93 CORRADO Sik. #5016		
	WAS.....\$13,280 SAVE.....\$1,380	NOW \$11,900*
NEW '92 JETTA Sik. #4097		
	WAS.....\$19,255 SAVE.....\$2,755	NOW \$16,500*
NEW '92 CABRIOLET		
	WAS.....\$18,160 SAVE.....\$2,660	NOW \$15,500*
'92 PASSAT		

*Plus tax, title, license, includes all accessories & rebates.

1785 Telegraph, Bloomfield Hills

338-4531

Check out the cars, then check your swing

One way to get into the swing of things at the 1993 North American International Auto Show is to take advantage of a golf demonstration that will be offered.

About 150 professional golfers will be on hand to give demonstrations and offer tips to duffers from Thursday, Jan. 14 through Sunday, Jan. 17 during auto show hours. Sixty hitting nets will be set up so golfers can hit six balls and have their swing analyzed by a pro. Also, a putting surface will be available for critiques and lessons. Another area will be designated for club fittings.

The golf weekend is an additional \$3 for people attending the auto show. There is no separate fee or entrance for the golf weekend only. For \$10, attendees can have their swing videotaped while being coached by a Michigan pro. They can then take home the videotape.

"We like to think of this as one of the world's largest golf clinics," said Ken Devine, executive director of the Michigan Sector PGA. "The purpose is to give attendees a tip or two from Michigan PGA golf professionals in an exciting environment."

Daniel Hayes, executive vice president of the Detroit Auto Dealers Association said the golf weekend will not be a push to sell products. "This is a hands-on event to improve your game. It's a chance to have a club in your hands in the dead of January."

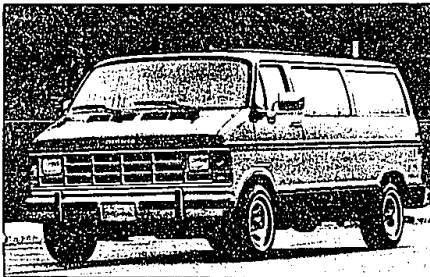
Part of Chrysler's 1993 Lineup



The 1993 Dodge W 250 (diesel)



The 1993 Jeep Grand Wagoneer



The Dodge B250 Wagon LE



Brand New 1993 Shadow Sedan 2.2L 4cyl engine, automatic transmission, power steering, power brakes, air conditioning, tinted glass, rear defog, S13R BSW tires. Stock #22241. Was 11,009

Sale Price \$8986

or less for Chrysler emp.



Brand new 1993 Intrepid Sedan 3.3L V6 engine, automatic transmission, power steering, power brakes, air conditioning, tinted glass, rear defog, power door locks, power windows, tilt, cruise control, AM/FM stereo cassette, floor mats, SBR BSW tires. Stock #23518. Was 18,100

Sale Price \$15,743

or less for Chrysler emp.



Brand New 1992 Grand Caravan LE 3.3L V-6 engine, automatic overdrive transmission, power steering, power locks, air conditioning, tinted glass, A.B.S. brakes, AM/FM stereo cassette, power seat, power locks, power windows, tilt wheel, cruise control, luxury woodgrain, cast aluminum wheels, luggage rack, WSW steel belted tires. Stock #70214. Was 23,203

Sale Price \$18,593*

or less for Chrysler employees



Brand New 1993 B-250 Van Conversion 318 V6, automatic transmission, power steering, power windows, tilt, cruise control, power mirrors, AM/FM stereo cassette, pulse wiper, 33 gal fuel tank, cast aluminum wheels, WSW SBR tires, 4 capt. chairs, rear sofa, 3 bay windows, luggage rack, running boards, spare tire carrier. Stock #33046. Was 25,589

Sale Price \$14,498

or less for Chrysler emp.



Brand New 1993 Dynasty Sedan 3.3L V6 engine, automatic transmission, power steering, power brakes, air conditioning, tinted glass, rear defog, AM/FM stereo, power door locks, tilt wheel, cruise control, floor mats, body side stripes, cloth bench seats, wheel covers, WSW SBR tires. Stock #25057. Was 17,274

Sale Price \$11,789

or less for Chrysler emp.



Brand New 1993 Dakota Sport Club Cab "Four Wheel Drive," 3.3L V-6 engine, automatic transmission, power steering, power brakes, AM/FM stereo cassette, sport stripes, 23 gal fuel tank, sport steering wheel, painted rear step bumper, full floor carpet, premium cloth bucket seats with console, cast aluminum wheels, white letter all terrain tires. Stock #37074. Was 17,716

Sale Price \$14,873

or less for Chrysler emp.



Brand New 1993 Dakota Sport 3.0L V6 engine, automatic transmission, power steering, power brakes, tinted glass, AM/FM stereo with cassette, pulse wiper, step bumper, sport stripe, cast aluminum wheels, white letter tires. Stock #37048. Was 11,831

Sale Price \$9967

or less for Chrysler emp.



Brand new 1993 Shadow ES 2.5L 4cyl engine, automatic transmission, power steering, power brakes, air conditioning, tinted glass, rear defog, AM/FM stereo with cassette, fog lights, tachometer, pulse wiper, remote lift release, floor mats, bucket seats with floor console, rear spoiler, cast aluminum wheels, SBR BSW tires. Stock #22088. Was 12,040

Sale Price \$9873

or less for Chrysler emp.



Brand New 1993 Dakota Sport Club Cab 3.3L V-6 engine, automatic transmission, power steering, power brakes, air conditioning, tinted glass, AM/FM stereo cassette, sport stripes, 23 gal fuel tank, sport steering wheel, painted step bumper, full floor carpet, premium cloth bucket seats with console, cast aluminum wheels, white letter tires. Stock #37053. Was 15,430

Sale Price \$12,789

or less for Chrysler emp.



BRUCE Campbell DODGE
538-1500

14875 TELEGRAPH, REDFORD BETWEEN FIVE MILE AND I-96

SATURDAY SERVICE HOURS:
8:00 A.M. TO 2:00 P.M.

*Plus tax, title, & destination. All rebates to dealer.

