

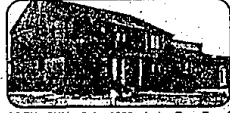
The Prudential Great Lakes Realty



OPEN SUN, 12-3, 5231 Homestead, N. of Square Lk. W. of Telegraph, BLOOMFIELD. Dramatic 4 bedroom transitional with quality and style! Two story foyer, high volume ceilings, open and airy. Fabulous kitchen. Hardwood floors, custom moldings, oak library 3 car and 2 half baths. Three car garage. \$769,000 646-6000



FARMINGTON HILLS. Stunning Transitional on a large, private court lot. Soaring ceilings, skylights, bridge on 2nd level and custom features throughout. Floor-to-ceiling 2-way fireplace. First floor master suite with fireplace, hairer dressing areas, sunken Jacuzzi and skylight! Gorgeous Gunite pool. \$549,000 626-9100



OPEN SUN, 2-4, 1290 Judy Dr., E. of Rochester, S. of Waties. TROY. Contemporary 3 bedroom home on a peaceful dead end street. Appointments include a huge master bedroom, finished basement with wet bar. Professional landscaping, paver patio and massive decking. Security system and sprinklers. \$214,900 689-8900



OPEN SUN, 1-4, 1428 Ardmore, S. of Quanton, E. of Lahser. BLOOMFIELD. Beautiful Ranch on a large lot! Spacious rooms and finished walk-out. Great open floor plan ideal for entertaining. Four bedrooms and 3 full 2 half baths. Security system, 3 car garage and circular drive. \$409,000 646-6000



BLOOMFIELD. Hard to find, true New England Colonial on a spectacular wooded and secluded 2+ acre lot. Extra large newer kitchen and large breakfast area. Double staircases to upper level exterior steps for a great office or studio. Birmingham Schools. \$379,000 646-6000



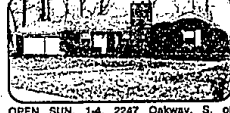
OPEN SUN, 2-5, 5411 Kingsway Ct., N. of 14 Mile, W. of Farmington. WEST BLOOMFIELD RANCH. Gorgeous new Contemporary! Open, neutral floor plan. Two Jacuzzi baths, 2 kitchens, large sauna and 3 1/2 car garage. Four bedrooms and 3 1/2 baths. \$359,900 851-8100 06-B-7570



OPEN SUN, 1-4, 20737 Thirteen Mile, S. side of 16, W. of Franklin. FRANKLIN. Secluded Williamsburg Colonial with 2-story foyer, circular staircase, stop-down great room with fireplace, gourmet kitchen and large dining room. \$349,500 626-9100 02-B-7722



BLOOMFIELD. Views of the golf course from every window! Spacious detached Condo. 4,000 sq. ft. with finished walk-out. Quality appointments, Corian and marble, hardwood floors and mirrored fireplace. Bloomfield Hills schools. \$319,000 851-8100 06-B-7774



OPEN SUN, 1-4, 2247 Oakway, S. of Square Lake, E. of Middlebelt. WEST BLOOMFIELD. Long Lake view! Freshly painted and carpeted. Four bedrooms, 2 1/2 bath home with lake access. Finished walk-out, 2 fireplaces and central air. \$289,000 646-6000 02-B-7703



OPEN SUN, 1-4, 30112 Fox Club, N. of 13 Mile, W. of Drake. FARMINGTON HILLS. Exciting 3 bedroom contemporary home in prestigious Hunters Hollow! Features great decor, recessed lighting, gourmet kitchen and custom appointments. \$282,000 626-9100 02-B-7565



OPEN SUN, 1-4, 3694 Edinborough, Hawthorn Hills Sub, S. of Dutton, W. of Adams. ROCHESTER HILLS. Newer Tudor with oak flooring, large rooms and 3 car garage. Sitting room off 4th bedroom. Master has 2 walk-in closets and jacuzzi. \$276,900 651-8650 04-A-7646



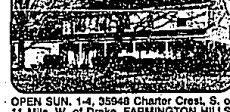
OPEN SUN, 1-4, 3585 Sherborn, Thornridge Sub, N. of Spinks, W. of Adams. ROCHESTER HILLS. Four bedroom Tudor with country decor. Family room with wet bar and garden fireplace. Two story sun room. Master bedroom with balcony and jacuzzi. \$259,900 651-8650 04-A-7752



OPEN SUN, 1-4, 37670 River Bend, N. of 9 Mile, W. of Halsted. FARMINGTON HILLS. Comfortable 4 bedroom home in a family neighborhood. Library overlooks common. Almost 3,000 sq. ft. of living space, 3 car garage, excellent condition! \$257,900 824-1100 02-B-7768



COMMERCE. Union-Lake front. This walk-out Ranch has been completely redone inside and out. New roof, Pella windows, insulation, wiring, kitchen with hardwood floors and bath. Boat dock, 2 car garage and sandy beach. \$237,500 851-8100 02-B-7775



OPEN SUN, 1-4, 35948 Charter Crest, S. of 11 Mile, W. of Drake. FARMINGTON HILLS. Bright, spacious 4 bedroom Colonial. Newly decorated. Hardwood floors, newer roof and carpeting. Updated kitchen and central air. Family room fireplace. \$214,900 626-9100 02-B-7759



WEST BLOOMFIELD. Prime location with dense woods in back offers extra privacy in this 4 bedroom, and unit Condo. Beautifully decorated. Marble entry and fireplace. Walk-out lower level with fireplace and bar. Just move in! \$210,000 851-8100 06-B-7776



FARMINGTON HILLS. Country living in the city! Custom 4 bedroom Ranch on a treed lot with pond. Large screened porch, finished walk-out basement and heated 3 car garage. Spacious dining room, chef's delight kitchen, 2 fireplaces. \$204,900 626-9100 02-B-7781



OPEN SUN, 1-4, 24726 Lakeland, N. of 10 Mile, E. of Orchard Lk. FARMINGTON HILLS. Large 4 bedroom Ranch in Springbrook Sub. Important updates include newer carpet, water heater, furnace, air and roof. Over 2,200 square feet. \$124,000 626-9100 02-B-7864



OPEN SUN, 1-4, 17430 Kirkshire, S. of 14 Mile, W. of Pierce. BEVERLY HILLS. Lovely 5 bedroom Cape Cod with a huge 1st floor master bedroom, master bedroom. Newer kitchen and rec room. Excellent condition. \$124,000 646-6000 01-B-7637



OPEN SUN, 1-4, 2116 Kemp, N. of Square Lake, E. of Middlebelt. BLOOMFIELD HILLS. Lake privileges on Hammond Lake. Library could be 3rd bedroom. Two and one-half baths, fireplace and dining room. Owner transferred. Must sell. \$192,000 626-9100 02-B-8150



OPEN SUN, 1-4, 1665 Hickory Bark Ln., N. of Square Lk. W. of Squirrel. BLOOMFIELD HILLS. This 4 bedroom Colonial is a great value. Immaculate condition. Updated kitchen and baths. New carpeting. Partially finished basement. Many amenities. \$169,000 626-9100 02-B-7650



OPEN SUN, 1-4, 4594 Burnley, E. of Adams, S. of Waties. BLOOMFIELD. Wonderful 3 bedroom Ranch. Family room with vaulted ceiling and French doors to patio. Master bedroom with walk-in closet, exercise room and down to private patio. \$179,900 646-6000 01-A-7357



OPEN SUN, 1-4, 21228 Parklane, S. of 9 Mile, E. of Halsted. FARMINGTON HILLS. 4 bedroom Colonial in a parklike setting. Kitchen/family room concept, 1st floor laundry, side-entrance garage. Central air, tennis and pool. \$179,900 626-9100 02-B-7854



OPEN SUN, 2-5, 2038 Deering, W. of Inlet, N. of Walnut Lk. Rd. WEST BLOOMFIELD. Sharp 3 bedroom Ranch with basement and 2 car attached garage. Walnut Lake privileges and Birmingham schools. Family room with fireplace. \$144,000 851-8100 06-B-7674



OPEN SUN, 1-4, 643 Ravine Terrace Ct., Avon Ravine Sub, N. of Avon, E. of Lyons-Rochester-Hills. Classic 4 bedroom Colonial. Close to schools. Dramatic 2-story foyer, custom moldings. Great master suite, finished basement. \$179,900 651-8650 04-A-7753



OPEN SUN, 1-4, 6308 Riverton, N. of Square Lk., E. of Crooks. TROY. Three bedroom Ranch with open floor plan and professional decor! Two full baths, 1st floor laundry, ultra modern kitchen, great room with fireplace. Troy schools! \$177,750 689-8900 05-A-7671



OPEN SUN, 1-4, 39 Danforth, White Lk. Twp., W. of Highland Rd. to L on Williams Lk. B on Elizabeth Lk. to R on Danforth. ENCHANTED COTTAGE. Warm and cozy lakefront home. Terraced gardens to lavender patio. Special home or hideaway. \$169,900 851-8100 06-B-7551



OPEN SUN, 1-4, 5639 Calapeper, W. of Farmington, S. of Walnut Lk. Rd. WEST BLOOMFIELD. Drabable 3 bedroom Contemporary. Heated inground pool and spa. Large master bedroom with bath, fireplace, central air and 2 full baths. \$158,500 851-8100 05-A-7352



OPEN SUN, 1-4, 1933 Devonshire, E. of Woodland, W. of Square Lk. WEST BLOOMFIELD. Affordable elegance! Four bedroom Colonial with updated kitchen, baths and windows. Gorgeous new carpeting. Park-like yard with sprinklers. \$149,900 651-8850 04-A-7602



OPEN SAT. & SUN, 1-4, 642 Whitney, E. of Rochester (aka Arlington in Whitney), N. of Avon. ROCHESTER HILLS. Three bedroom, 2 1/2 bath home with a great yard. Fresh and light interior. Finished basement. Family room with fireplace. \$147,900 651-8650 04-A-7771



OPEN SUN, 2-5, 2496 Coral Drive, E. of John R. S. of Square Lake. TROY. Stately Colonial on beautiful corner lot. Immaculate condition with 4 bedrooms, formal living and dining rooms, 2 1/2 baths. Large family room with fireplace. \$146,000 689-8900 05-A-7596



TROY. Like a tree? Winged Colonial on a prime wooded lot. Walking distance to elementary. Great home for young family. Four bedrooms, 2 1/2 baths, dining room, 1st floor laundry, 2 1/2 baths and room with fireplace. Central air. \$137,900 689-8900 05-A-7787



OPEN SUN, 1-4, 5688 Hillcrest Circle, W. of Walnut Lk. Rd. W. of Drake. WEST BLOOMFIELD. Two bedroom Townhouse with neutral decor, 2 1/2 baths and lots of storage. Great room with fireplace. Central air, 2nd floor laundry. \$124,990 851-8100 06-B-7202



OPEN SUN, 1-4, 6412 Aspen Ridge, N. of Woodland, W. of Square Lk. WEST BLOOMFIELD. END UNIT, BACKS TO GREEN BELT! Elegant Townhouse. Two bedrooms, 2 1/2 baths, basement, dining room, 1st floor laundry and great room fireplace. \$141,499 851-8100 06-B-6566



OPEN SUN, 1-4, 29937 Eastfield, N. of 13 Mile, E. of Orchard Lk. FARMINGTON HILLS. Excellent location. Absolute move-in condition. Freshly painted 3 bedroom Ranch. Updated bath, newer window treatments and kitchen. \$114,900 626-9100 02-B-7565



OPEN SUN, 1-4, 1178 Madagawiew, N. of Cooley Lk. W. of Hiller. WATERFORD. Wonderful family home. Neutral decor, Barber carpet, updated kitchen and large family room with wood stove. Three bedrooms, 1 1/2 baths. Freshly painted. \$112,900 851-8100 06-B-7728



ROYAL OAK. Move right in! Well maintained 3 bedroom Ranch. Great family neighborhood close to parks and shopping. Finished basement, 2 bedrooms and full bath. Never central air, neutral carpeting. Some new windows. Fenced yard. \$93,500 626-9100 05-A-7769



COMMERCE. Land contract offered. Sharp 3 bedroom Ranch with finished basement, air and inground pool. Newer windows, kitchen, bath, furnace, roof, carpeting and decor. Two and 1/2 car garage. Minutes from 12 Oaks and expressways. \$119,900 851-8100 06-B-7798



OPEN SUN, 1-4, 30727 Shawassaw #54, N. of 9 Mile, E. of Orchard Lk. FARMINGTON HILLS. Deluxe unit in immaculate condition. Two bedrooms, 2 full baths and formal dining room. Private storage area. Clubhouse and pool. Bullet in closet and bath. \$88,000 626-9100 02-B-7558



OPEN SUN, 1-4, 1722 Brentwood, N. of Long Lake, E. of Coolidge. TROY. Two bedroom Townhouse boasts family room with fireplace, quarry tile in kitchen. Three family room, finished basement, 1 1/2 baths and all appliances. Troy schools. \$86,500 689-8900 05-A-7733



OPEN SUN, 1-4, 2434 Mulberry #54, N. of Square Lk., E. of Woodward. BLOOMFIELD HILLS. Beautiful 2 bedroom, 2 full bath Condo. Half bath in basement, 2 assigned carpools, pool, clubhouse and Bloomfield Hills schools. 1,351 square feet. \$79,900 626-9100 02-A-7658



SYLVAN LAKE. Great starter home, only one minute walk to beach and boat privileges. The 3 bedroom home features many updates, newer roof shingles, stove, recessed lights, ceiling fan, etc. Secure location, Rich and famous neighbors! \$79,900 646-6000 01-B-7675



OPEN SUN, 1-4, 23335 Stonehenge, S. of 10 Mile, W. of Hagerty. NOVI. Large Townhouse in Stonehenge! Two bedroom, one-unit. Great room with cathedral ceiling. Open floor plan, basement and garage. Excellent location. \$74,000 626-9100 02-B-7640



OPEN SUN, 1-4, 30727 Shawassaw #54, N. of 9 Mile, E. of Orchard Lk. FARMINGTON HILLS. Deluxe unit in immaculate condition. Two bedrooms, 2 full baths and formal dining room. Private storage area. Clubhouse and pool. Bullet in closet and bath. \$87,900 626-9100 02-B-7657



OPEN SUN, 1-4, 30727 Shawassaw #54, N. of 9 Mile, E. of Orchard Lk. FARMINGTON HILLS. Deluxe unit in immaculate condition. Two bedrooms, 2 full baths and formal dining room. Private storage area. Clubhouse and pool. Bullet in closet and bath. \$87,900 626-9100 02-B-7657

BIRMINGHAM/BLOOMFIELD 1520 N. Woodward (at Long Lake) 646-6000	FRANKLIN/FARMINGTON 3100 Northwestern Hwy. (at 13 Mile) 626-9100	WEST BLOOMFIELD 4316 Orchard Lake (at Lone Pine) 851-8100
ROCHESTER 1460 Walton Blvd (at Livermore) 651-8850	TROY RELOCATION OFFICE 800-521-4264	TROY 3150 Livermore (at Dog Beavers) 689-8900
OPEN MONDAY-FRIDAY 9 a.m.-7 p.m., SAT. 9 a.m.-5 p.m., OPEN SUNDAYS <small>The Prudential and its service marks are of The Prudential Insurance Company of America.</small> An Independently Owned and Operated Member of The Prudential Real Estate Affiliates, Inc.		

The Prudential Great Lakes Realty

