



# RALPH MANUEL

## ASSOCIATES • REALTORS



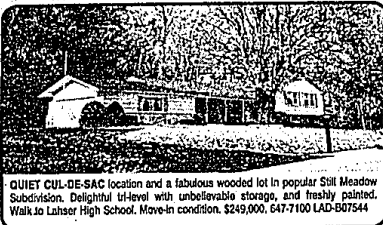
**CLASSIC QUARTON LAKE ESTATES.** 4 bedroom home has 2 fireplaces, family room has wet bar, step-down living room with beamed ceiling, 2 full/2 half baths, and more. Superb example of Wallace Frost. \$498,000. 647-7100 PIK-B08351



**BLOOMFIELD HILLS ACREAGE.** Wonderful opportunity for builder to improve existing home, or tear down. Lower Long Lake privileges included. Over 3 1/2 acres. \$400,000. 647-7100 FRN-B03437



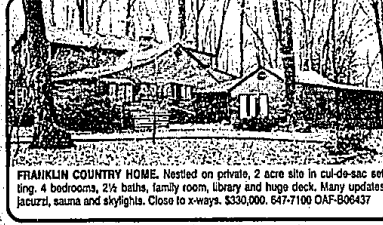
**MISSION SPRINGS** on Durb Lake. Fabulous home with wonderful amenities. Features include formal living room, dining room, family room, sun room, and library. Located on premium wooded lot. \$349,000. 851-6900 MIN-M36818



**QUIET CUL-DE-SAC** location and a fabulous wooded lot in popular Still Meadow Subdivision. Delightful lot-level with unbelievable storage, and freshly painted. Walk to Luther High School. Move-in condition. \$249,000. 647-7100 LAD-B07544



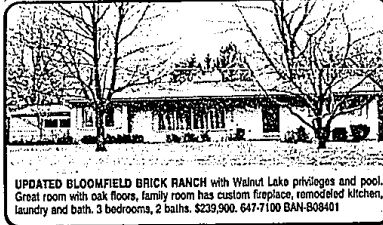
**BLOOMFIELD RANCH.** Charming 3 bedroom, 2 1/2 bath "Girk in the Hills" area. Family room, 2 fireplaces, hardwood floors and pool with jacuzzi. Must See! Offered at \$289,000. 851-6900 APE-M-04264



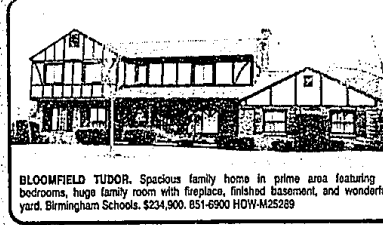
**FRANKLIN COUNTRY HOME.** Nestled on private, 2 acre site in cul-de-sac setting. 4 bedrooms, 2 1/2 baths, family room, library and huge deck. Many updates, jacuzzi, sauna and skylights. Close to x-ways. \$330,000. 647-7100 OAF-B06437



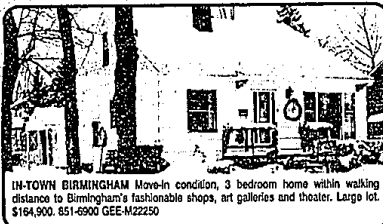
**THIS UNIQUE CONTEMPORARY** home sits on a beautiful lot overlooking a 7 acre park with hidden lake pond. Open floor plan, loft overlooks the living room with 2-way fireplace to family room. \$209,900. 851-6900 WHY-M35215



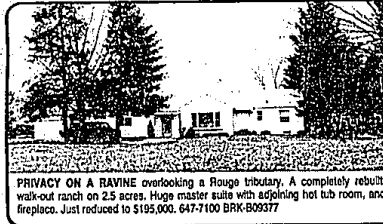
**UPDATED BLOOMFIELD BRICK RANCH** with Walnut Lake privileges and pool. Great room with oak floors, family room has custom fireplace, remodeled kitchen, laundry and bath. 3 bedrooms, 2 baths. \$239,900. 647-7100 BAN-B08401



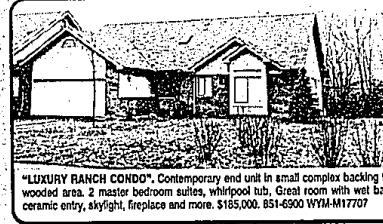
**BLOOMFIELD TUDOR.** Spacious family home in prime area featuring 4 bedrooms, huge family room with fireplace, finished basement, and wonderful yard. Birmingham Schools. \$234,900. 851-6900 HOW-M25289



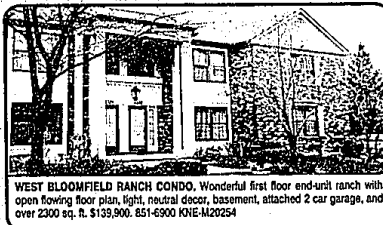
**IN-TOWN BIRMINGHAM** Move-in condition, 3 bedroom home within walking distance to Birmingham's fashionable shops, art galleries and theater. Large lot. \$164,900. 851-6900 GEE-M22250



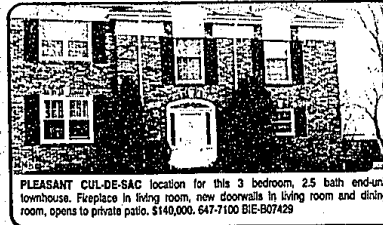
**PRIVACY ON A RAVINE** overlooking a Rouge tributary. A completely rebuilt, walk-out ranch on 2.5 acres. Huge master suite with adjoining hot tub room, and fireplace. Just reduced to \$195,000. 647-7100 BRK-B09377



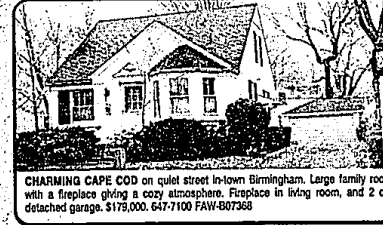
**"LUXURY RANCH CONDO"**. Contemporary end unit in small complex backing to wooded area. 2 master bedroom suites, whirlpool tub. Great room with wet bar, ceramic entry, skylight, fireplace and more. \$165,000. 851-6900 WYM-M17707



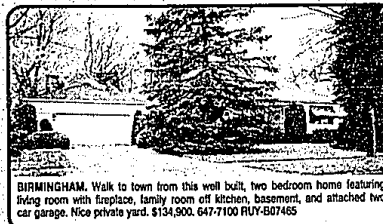
**WEST BLOOMFIELD RANCH CONDO.** Wonderful first floor end-unit ranch with open flowing floor plan, light, neutral decor, basement, attached 2 car garage, and over 2300 sq. ft. \$139,900. 851-6900 KNE-M20254



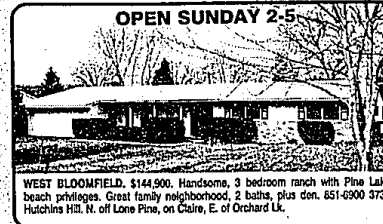
**PLEASANT CUL-DE-SAC** location for this 3 bedroom, 2 1/2 bath end-unit townhouse. Fireplace in living room, new doorways in living room and dining room, opens to private patio. \$140,000. 647-7100 BIE-B07429



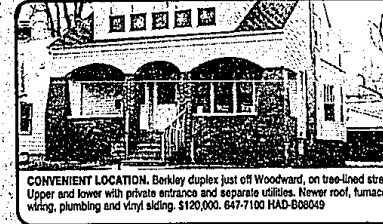
**CHARMING CAPE COD** on quiet street in-town Birmingham. Large family room with a fireplace giving a cozy atmosphere. Fireplace in living room, and 2 car detached garage. \$179,000. 647-7100 FAW-B07368



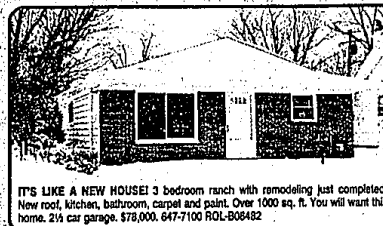
**BIRMINGHAM.** Walk to town from this well built, two bedroom home featuring living room with fireplace, family room off kitchen, basement, and attached two car garage. Nice private yard. \$134,900. 647-7100 RUY-B07465



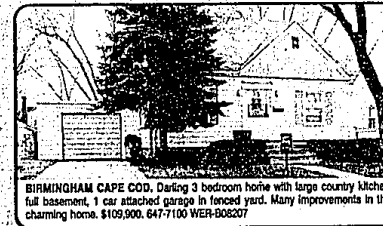
**WEST BLOOMFIELD.** \$144,900. Handsome, 3 bedroom ranch with Pine Lake beach privileges. Great family neighborhood, 2 baths, plus den. 851-6900 3730 Hutchins Hill. N. off Lone Pine, on Chaire, E. of Orchard Lk.



**CONVENIENT LOCATION.** Berkley duplex just off Woodward, on tree-lined street. Upper and lower with private entrance and separate utilities. Newer roof, furnaces, wiring, plumbing and vinyl siding. \$120,000. 647-7100 HAD-B08049



**IT'S LIKE A NEW HOUSE!** 3 bedroom ranch with remodeling just completed. New roof, kitchen, bathroom, carpet and paint. Over 1000 sq. ft. You will want this home. 2 1/2 car garage. \$79,000. 647-7100 ROL-B06482



**BIRMINGHAM CAPE COD.** Daring 3 bedroom home with large country kitchen, full basement, 1 car attached garage in fenced yard. Many improvements in this charming home. \$109,900. 647-7100 WER-B06207



**BEAUTIFUL CONDO!** 2 bedrooms, very open floor plan, cathedral ceiling in living room, and family room has beam ceiling with gas fireplace. \$89,900. 647-7100. 29140 Evergreen, N. of 12 Mile, E. side of Evergreen.

647-7100  
1821 W. Maple  
Birmingham-  
Bloomfield

851-6900  
32961 Middlebell  
Farmington Hills-  
West Bloomfield

539-1000  
Commercial  
Division  
Mon.-Fri.

1-800-R-MANUEL  
RELOCATION  
TOLL-FREE

