

Ranch offers room to spread out

Cultured stone accents add street appeal to the contemporary ranch-style Carthage, a single-level, three-bedroom with plenty of space to spread out.

Heavy wood beams support a gabled porch that adds variety to the roofline. Sidelights flank the multi-paneled front door and the grid pattern carries over in the decorative trim on the garage doors. Vertical lap siding heightens the contemporary flavor.

Family living takes place in the great room, at the back. The owners' suite is to the far left, well buffered from the sounds of family activities by the dining room and living room. Children's or guest bedrooms and the main bathroom are to the right.

The U-shaped kitchen is large with a walk-in pantry and built-in

desk. Range and oven are located in a central work island. The counter that provides separation between the kitchen and the nook could be partially elevated for use as an eating bar.

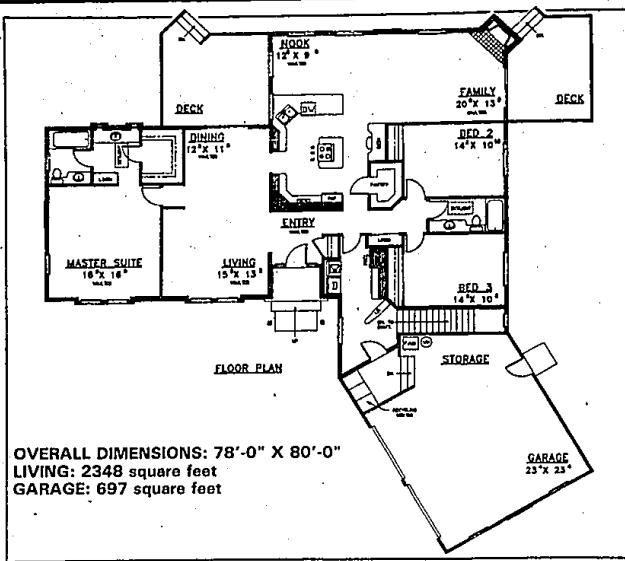
Windows on two sides of the nook make this area exceptionally bright. If desired, sliding glass doors could substitute for the left-facing window to allow direct access to the deck. Sliders at the right end of the family room open onto another small deck next to the stone-face fireplace.

The utility room is large enough to include space for a freezer, a fold-down ironing board and basement stairs. Located next to the garage, it serves as a pass-through space for unloading groceries and a place to leave

mess footwear instead of tracking mud through the house. A recycling center is tucked into the passageway from the garage, handy but out of sight. Extra storage space is available at the back of the two-car garage.

Skylights brighten both bathrooms. The master bathroom also has a second vanity in the dressing room, located between the walk-in closet and the private portion of the bathroom.

For a study plan of the Carthage (332-150), send \$7.50 to Landmark Designs, P.O. Box 2307, Eugene, Or. 97402, specifying plan name and number.



OVERALL DIMENSIONS: 78'-0" X 80'-0"
LIVING: 2348 square feet
GARAGE: 697 square feet

Everyone's Flocking In To See Our Fabulous New Models From \$169,900.

You'll find our brand new collection of detached condominium homes more affordable, more liveable and more luxurious than ever before!

We've added exciting new ranch, colonial and 1 1/2 story loft plans with airy, open interiors, breathtaking wooded views and prime sites for walk-out levels.

So come see our furnished models and remarkably natural surroundings.

Now we're even easier to get to, via newly paved Halsted Road. Once here, you'll find The Lagoons suits a variety of lifestyles, most especially yours.



Built From Nature's Blueprints
Models Open Noon-6 p.m.
(Closed Thursday)
691-5000

The Chase Company Trumpets The Final Phase Of Charming Birmingham Classic Series Homes From \$163,000

Every great lifestyle has its price. Ours is affordable.

Perhaps you've always thought that living in an amenity rich community like Adams Ridge is out of your price range. Well...think again.

At Adams Ridge you'll find a lake with fountains, a charming gazebo and park benches. There's also a championship tennis court and gorgeous landscaping with natural fieldstone entries.

Plus, it's only minutes to great schools, shopping, I-75 and M-59. All this at a price you can afford.

Now is the time to buy while prime lot selections in Phase II are still available. Remember every great lifestyle has its price. Ours happens to be very affordable.

Visit today-furnished models are open 7 days, from 12-6 pm.

Great American Homes By Michigan's Only Diamond Award Builder

ST. JACOBSON
Call 299-4440

Developed By THE CHASE COMPANY
Bringing Quality To Life.
(313) 642-0073



BE A PART OF THE EXTRAORDINARY

Inside, the floor plans are free flowing with open rooms, vaulted ceilings, extensive use of glass, entertainment areas, lifts and more. Quality and attention to detail is evident at every turn.

Outside, the style is European design with a Mediterranean blend of brick and cedar. A central watercourse with lighted fountains and walking course complements the impeccable landscaping. For those who prefer the privacy and elegance of a single family home with the maintenance-free advantage of condominium living, The Villas are an ideal choice.

Located near the I-275/Eight Mile Corridor the best of Northville, Novi, Farmington Hills and Livonia are moments away from fine shops, restaurants and entertainment. Break away from the ordinary and visit today.

BUILDER INVENTORY REDUCTIONS!

Price from \$199,500
Open Daily 12-6
953-0080

The Villas
LUXURIOUS DETACHED CONDOMINIUMS
Builders Welcome

SPRING SPECIAL Somerset Chase

OF EASTROY

Our Standard Features

- Full carpeting
- All ceramics and marble
- Light fixtures
- All items
- All kitchen appliances (except refrigerator)

Spring Features

- Free oil conditioning
- Free sod
- Free sprinkler system

From the mid-\$250,000's

Open Daily & Weekends 4-6
Closed Thursday

112 Mill East at Coalingo
112 Mill West at Coalingo
11 Mile N of Somerset Mall

Phone: (313) 641-7709 or (313) 642-8686

The Benicke Group
A Development Corporation

Tri-Mount Homes Asks... CAN YOU BELIEVE THIS ???... 2,175 SQ. FT. FOR ONLY... \$139,990

These Luxurious Features are STANDARD

- Oak Kitchen Cabinets
- Wood Bannisters
- Stained Woodwork throughout
- Insulated Thermoplastic Windows
- Whirlpool Dishwasher
- Garbage Disposal
- Range Hood Fan
- "Wax-Free" Linoleum
- Ceramic Tile Floors in upper Baths
- Electronic Ignition Furnace
- Prepped for Air Conditioning
- CARPETING THROUGHOUT

Just a Mile to famous Kensington State Park

In the Very Quaint Village of Milford

Milford Heights

Tri-Mount

Visit us Weekdays from 1 to 6, Saturday & Sunday Noon to 5. Take 96 to Milford Road Exit Go North on Milford Rd for 4 Miles.

Fox Run CONDOMINIUMS

Custom Crafted Condominiums Located in Beautiful Woods of Waterford. Two and three bedroom ranch style homes from 1330 to 1675 square feet with first floor laundry, central air, 2 car attached garage, cedar deck, appliances and much more!

from **\$108,900**

Open 1-6 Daily
Closed Wednesday & Thursday

(313) **683-9100**
Brokers Welcome

(313) **674-4608**

Sales by **A.F. Pauly Realtors**