

Parade of Homes

from page 1F

"The house has a very cozy floor plan," said Stephen Taglione, president of Heritage Residential. "It has a butler's pantry, or den, which is quite an amenity for this price range."

A two-car garage and basement are included.

"The thing I'm most gratified with is we're a repeat winner," said Taglione, whose firm last year won in the same price category with a ranch model.

At \$196,000 to \$220,000, The Turnberry, 2,500 square feet starting at \$207,200 including lot, will be built by Ivanhoe-Huntley Homes of West Bloomfield in that community's Spring Meadow Subdivision.

A similar model is available at Golfview Pointe at Copper Creek in Farmington Hills.

The living room and a library are on either side of the main foyer with the dining room, kitchen, nook and family room running together along the back of the model.

Two full baths and four bedrooms, including the master suite, are on the second level.

"It's a tremendous value for the square footage," said Gary Shapiro, an Ivanhoe-Huntley partner. "The key to the design is there is no wasted space."

"The master suite is very elaborate for this price range," he said. "It has a cathedral ceiling, two walk-in closets. It's set off by itself, real private."

Other elements mentioned by Shapiro were the two-story foyer, first-floor laundry, elaborate kitchen and the possibility of

pulling the living and dining rooms together for entertainment purposes.

An attached garage and basement are included.

"I'm also proud of the elevation, how it looks," he said of the exterior.

■ \$220,000 and higher — The Broadway, built by Richter-Rosin Construction of Southfield at Woods of Orchard Lake in West Bloomfield is 3,600 square feet with a starting price of \$372,000 including lot.

A two-way fireplace separates the family room from the kitchen/breakfast nook. Two half-baths are on the main floor as is a formal dining room, a room that can be used as a parlor or library and a living room.

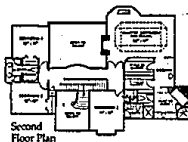
The master suite upstairs contains two walk-in closets and a sitting alcove. Two full baths service three other upstairs bedrooms.

"It's the nicest model we've ever done," said Jim Rosin, marketing director. "It has decorative windows, a functional floor plan. People today want expansive baths and kitchens. It has a back staircase that services the master bedroom to the kitchen."

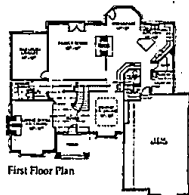
A two-car garage and basement are standard.

■ Condominiums — The Edgewood, 2,300 square feet priced at \$210,000, was built by Robertson Brothers of Bloomfield Hills. The model is part of the Heathers golfing community in Bloomfield Township.

The master bedroom suite is on



Second Floor Plan



First Floor Plan

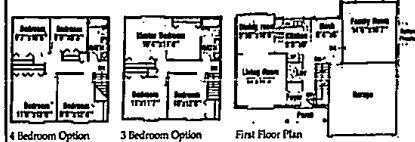
Broadway
3,600 square feet
Richter-Rosin
Construction
\$372,000

the ground floor, the second bedroom with a full bath upstairs.

The living room is off the master suite and in turn leads to the dining room, breakfast nook and kitchen. The library, which also could be used as a second downstairs bedroom, is just off the

main foyer. A full bath and a laundry room are off the two-car garage entry.

"There's lots of volume space, lots of glass," said Jan Robertson, sales manager for Robertson Brothers. "There's volume ceilings throughout and a large, dra-



Colonial
1,650 square feet
Edward Rose & Sons
\$109,500

matic two-story foyer."

The model features a two-car garage and basement.

"All units have a golf-course view or walkout to the lake," Robertson added. "Demand and acceptance are tremendous."

GTR Builders of Clinton Township won the other two Pa-

rade of Homes awards.

Its Wellington model in Clinton, a colonial with a country look, was selected in the \$176,000 to \$195,000 price range. The Juliana, a condo in Macomb Township, prevailed in the \$131,000 to \$154,000 range.

Everyone's Flocking In To See Our Fabulous New Models From \$169,900.

You'll find our brand new collection of detached condominium homes more affordable, more liveable and more luxurious than ever before!

We've added exciting new ranch, colonials and 1½ story loft plans with airy, open interiors, breathtaking wooded views and prime sites for walk-out levels.

So come see our furnished models and remarkably natural surroundings.

Now we're even easier to get to, via newly paved Halsted Road. Once here, you'll find The Lagoons suits a variety of lifestyles; most especially yours.



Children Walk Next Door To The New Pleasant Lake Elementary School.

Built From Nature's Blueprints Models Open Noon-5 p.m. (Closed Thursday) 681-5000

THE WOODS OF ORCHARD LAKE

A Compelling Reason To Move Up To West Bloomfield.



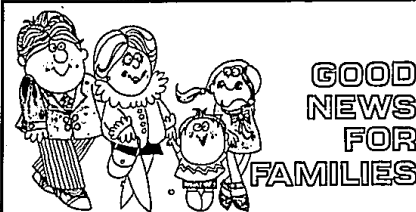
Introducing An Impressive New Array Of 1993 Designs Priced From The '280's.

You'll see it in the classic new plans with refined features and custom upgrades like walk-out lower levels with wooded views.

Like all great treasures, you may need to follow the map to find The Woods of Orchard Lake. However, once you discover we're surrounded by all-sports lakes, Orchard Lake Country Club, and West Bloomfield's "National Exemplary Schools," you won't need to look any further.

Located south of Commerce Rd. on the west side of Old Orchard Trail Open Daily 12-6 p.m. (Closed Thurs.)

THE WOODS OF ORCHARD LAKE 363-8990



GOOD NEWS FOR FAMILIES

CUSTOM AFFORDABLE NEW CONSTRUCTION

Starting at \$86,900*

Featuring...

- 1740 Square Feet
- Cathedral Ceiling
- Full Size Lots
- Sodded Front Yards
- City Water/Sewers
- Custom Cedar Porches
- Choice of all Exterior and Interior Colours
- Full Ceramic Baths
- Custom Cabinets
- Vinyl Windows
- 25 ft. 2 Car Attached Garage
- Stained or Painted Trim

*Pre-Construction prices will be held until streets are paved (April)

42 28 HOMESITES TO CHOOSE FROM

Palmer Gardens

RANCHES • COLONIALS • RAISED RANCHES

West of Hix, North of Palmer

MODEL OPEN SAT. & SUN. 1-5 Bill or Jim Dempsey Realty Professionals

OFFICE: 476-5300 MODEL: 467-5607

HERMAN FRANKEL PRESENTS TIMELESS IMPRESSIONS IN WEST BLOOMFIELD



Sophistication Abounds Beyond The Village Gate House.

Sense the special pleasures that await... The sweet fragrance of flowering pear trees. The song of robins rising from charming bird houses. The warm feeling evoked by park benches, historic street lights and rich brick pavers. And, of course, Herman Frankel's unmistakable touch of architectural mastery.

Preview The "Collector's Edition"

At Simsbury, exquisite design is not just an art form, but also a way of life. Classic ranch and two-story plans showcase up to 2,900 square feet of flowing spaces that will send your imagination soaring.

And, with prices from \$182,900 to \$259,900, it's easy to share Herman Frankel's passion for the fine art of living well.

Village of Simsbury

Located in West Bloomfield on Farmington Road, just north of 14 Mile Road.

Information Center Open Daily & Weekends Noon-6 pm (Closed Thursday)

851-3500 Model • 683-3500 Office

herman frankel

The Chase Company Trumpets The Final Phase Of Charming Birmingham Classic Series Homes From \$163,000

Every great lifestyle has its price. Ours is affordable.

Perhaps you've always thought that living in an amenity rich community like Adams Ridge is out of your price range. Well...think again.

At Adams Ridge you'll find a lake with fountains, a charming gazebo and park benches. There's also a championship tennis court and gorgeous landscaping with natural fieldstone entries.

Plus, it's only minutes to great schools, shopping, 1-75 and M-59. All this at a price you can afford.

Now is the time to buy while prime lot selections in Phase II are still available. Remember every great lifestyle has its price. Ours happens to be very affordable.

Visit today-furnished models are open 7 days, from 12-6 pm.

Great American Homes By Michigan's Only Diamond Award Builder

SIR JACOBSON Call 299-4440

Developed By CHASE COMPANY Bringing Quality To Life. (313) 642-0073

ADAMS RIDGE

ADAMS RIDGE