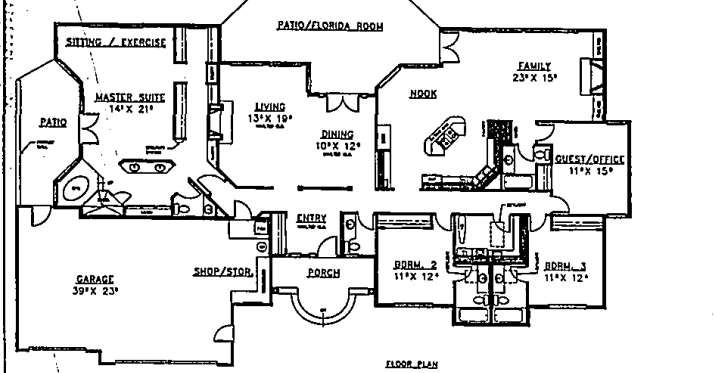


OVERALL DIMENSIONS: 96'-0" X 56'-0"  
LIVING: 3123 square feet  
GARAGE: 889 square feet



## Open floor plan invites spacious living

The first impression upon entering the Adriane is one of spaciousness. Vaulted ceilings accent the entry, living room and dining room.

This plan puts these formal living spaces at the center, master suite and garage on the left and other rooms on the right. Thus, the master suite is isolated from the children's bedrooms and the family living area.

An adult retreat, the master suite offers a number of amenities including closets that are divided into two sections, each with its own vanity. Controls for a security system are affixed to an outer wall of a closet, close to the entrance.

Except for an enclosed toilet and

sink, the luxurious bathroom is open but partially separated by a wall that houses two more basins. A sitting or exercise area is at the back of the sleeping area, and French doors open onto a private patio. A three-car garage, accessible from this patio as well as through another door has a work bench and plenty of extra space for storage.

Family living takes place in the spacious and bright family room, which is totally open to the U-shaped kitchen. A fireplace is at one end, a sunny eating nook at the other, and French doors open onto the patio. Extend the roof, add screening and this outdoor space becomes a Florida room

where you can eat or relax without the company of insects.

Features in the kitchen include a desk, vegetable sink, a pantry, and a large central island/eating bar combination with built-in cooktop. One of the house's five bathrooms is just off the family room, adjacent to a room that could serve as a home office or guest quarters.

A skylit utility room is close to the kitchen, nestled in a space between two bedrooms, each with its own skylit private bath.

For a study plan of the Adriane (332-260), send \$7.50 to Landmark Designs, P.O. Box 2307, Eugene, Or. 97402.

**From \$103,900**

**Great Value, Exceptional Quality.**

**Carriage Park**

- 2-3 Bedrooms
- Full Basement
- 2 1/2 Baths
- 2 Car Attached Garage
- Spacious, Open Floor Plans

**Immediate Occupancy**  
**Kathy Townsend**  
**981-9420**

Model Hours  
12:00-5:00  
Daily  
Closed  
Thursday

Ford	Ed	275
Cherry	Hill	

**QUALITY AND HONESTY**

## Brighton Your Outlook.

Set your sights on the ultimate in condominium living: Woodridge Hills, in the quiet, nearby town of Brighton.

Convenient to the intersection of US-23 and I-96, Woodridge Hills features elegant 2 bedroom and 2 bath condominiums in a wooded park-like setting. Complete with a woodburning fireplace, full basement, 2 car garage, deck, appliances and air conditioning.

**SPECIAL LIMITED OFFER**  
**SAVE \$5000**  
**ON SELECTED MODELS!**  
From \$119,900 (Minus \$5,000=\$114,900)

**Woodridge Hills**

Three Designer Models  
Open Daily 12-6, Closed Thursday  
(313) 229-6776

■ Ranch and townhouse plans  
■ Private entrances  
■ Central to Ann Arbor, Detroit, Lansing  
■ Walking trails, gazebo and tennis courts  
■ Brokers welcome

**Adler**  
(313) 229-6772

**WE'VE BUILT OUR REPUTATION ON IT**

**QUALITY AND HONESTY**

# child·reach (chīld-rēch) n.

1. Formerly Foster Parents Plan, the largest nonsectarian sponsorship organization in the world. Founded in 1937 to help needy children and their families overseas.
2. A way to reach a child and family and release them from the crushing grip of poverty.
3. A wonderful thing to do.
4. An easy thing to do.

The above definitions do not come from a dictionary. They come from the heart. If you want to do something wonderful for a child and family overseas that's not a handout, but something that will touch them for the rest of their lives, call 1-800-323-2822. Or fill out and mail the coupon below.

Childreach. It'll do *your* heart good!

**childreach**

The U.S. Affiliate of PLAN International

YES! I want to know more about Childreach.

N309

Name		
Address		
City	State	Zip
Phone		

Mail to: Childreach  
155 Plan Way  
Warwick, RI 02886-1099