

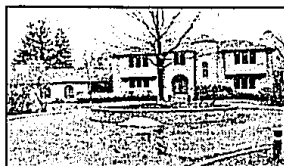
Chamberlain
REALTORS®

Honesty, Integrity,
Personal Professional
Real Estate Services!
COUNSEL WITH
CHAMBERLAIN!

HOMEQUITY
RELOCATION CENTER



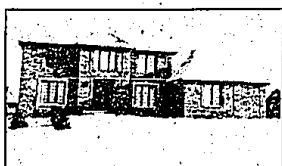
WEST BLOOMFIELD. Prestigious Woods of Orchard Lake. Fabulous newer home with 3 fireplaces, 2-story foyer and family room, island kitchen, skylights, hardwood floors. \$420,000 (T333E) 851-4400



BLOOMFIELD HILLS. Elegant yet comfortable, this outstanding home on over 2 acres near Cranbrook was designed with the finest amenities. Call for private showing. \$2,100,000 (C-310E) 647-6400



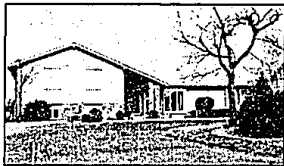
WEST BLOOMFIELD. Great family home with large rooms. Marble foyer, neutral decor, walk-thru butler pantry, dining room, library, knock-out finished walk-out. \$335,700 (W520E) 851-4400



TROY. Fantastic custom Colonial with gourmet kitchen, immediate and neutral. Fabulous finished lower level walk-out with 5th bedroom. \$384,800 (S478-E) 641-1660



BIRMINGHAM. Exciting 2 story on double lot offers lots of character and tremendous potential. Open, bright, spacious and neutral. Wrap-around front, side porch. \$299,000 (A-600E) 647-6400



WEST BLOOMFIELD. Magnificent Wakeek 4 bedroom, 4 1/2 bath split-level contemporary sizzles with amenities. Two fireplaces, 2 wet bars and Bloomfield Hills schools. \$289,900 (C-213E) 647-6400



TROY. Private cul-de-sac location. Four bedrooms, 2 1/2 baths, updated kitchen, first floor laundry, central air, finished basement, deck and gazebo. Troy High! \$198,500 (K243E) 647-6400



BLOOMFIELD TWP. Contemporary 4 bedroom Quad-Level. Neutral decor, 2 full plus 2 half baths, library, dining room, upper loft sitting room, large deck. \$254,000 (V516E) 851-4400



BLOOMFIELD. Exciting sophisticated yet practical California Contemporary nestled in prime wooded setting offers lots of quality updates. Super family home. \$339,000 (S-330E) 647-6400



BIRMINGHAM. Charming Cape Cod in Birmingham Hills sub features 4 bedrooms, 2 1/2 baths, 2 fireplaces, Florida room and a magnificent inground pool. Updated kitchen. \$219,777 (N-118E) 647-6400



BLOOMFIELD HILLS. Terrific newer Quad-Level. Large family room with fireplace and wet bar, 4 bedrooms, 3 1/2 baths, wooded yard. Close to Birmingham and Troy shopping. \$214,000 (W800E) 851-4400



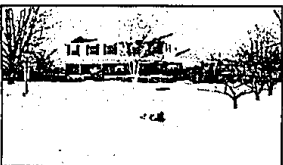
TROY. Extremely sharp 3 bedroom 2 1/2 bath contemporary in Merrill Acres. Four blocks from new Troy High School. Extra bedroom and bath in basement. \$224,900 (WW452E) 641-1660



TROY. Move-in condition, 4 bedroom contemporary, 2 1/2 baths. Large open great room with vaulted ceilings, fireplace. Wonderful heated year-round sun room. \$189,900 (H378E) 641-1660



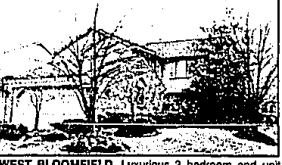
CASS LAKE LAKEFRONT. Contemporary floor and quality construction. Two-story great room, 3/4 bedrooms, 3 1/2 baths, jazz and sauna room, deck with electric awning. \$485,000 (L376E) 851-4400



WEST BLOOMFIELD. Large stately family Colonial on over an acre lot. Dining room, family room, natural fireplace, updated kitchen, finished basement, 1st floor laundry. \$224,000 (V-744E) 647-6400



WEST BLOOMFIELD. Maple Place Villa Condo. Charming ranch with attractive loft with 3rd bedroom and bath. Track lighting, upgraded cabinets and carpet. \$210,900 (K747E) 851-4400



WEST BLOOMFIELD. Luxurious 3 bedroom end unit condo in Pebble Creek. Private courtyard, 2 1/2 baths, marble floors, wet bar, 2-story great room, gourmet kitchen. \$209,000 (P698E) 851-4400



BLOOMFIELD. Private end unit Ranch located on the 5th green at "The Heathers". Two bedrooms, 2 baths, stunning decor, many upgrades, smashing master and atrium. \$224,900 (W-242E) 647-6400



BLOOMFIELD. 1+ acre lot with 3 bedroom home, den, full basement, Florida room, natural fireplace, updated kitchen, finished basement. \$184,900 (J-666E) 647-6400



FARMINGTON HILLS. Spacious Tudor in premium Country Ridge location. Custom decor, extensive use of ceramic tile, 4 bedrooms, 3 1/2 baths, finished walk-out. \$264,700 (C312E) 851-4400



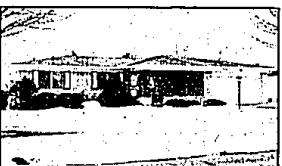
FRANKLIN. Wooded privacy yet close to all amenities. Updated Quad with newer kitchen and hardwood floors. Two fireplaces, good-sized rooms and more. \$279,900 (M-310E) 647-6400



BERKLEY. Oakland Manor beauty. Five bedrooms, 2 1/2 baths, formal dining room and library. Eat-in kitchen, 12x10 screened porch, 44x18 inground pool and great back yard. \$189,900 (B-181E) 647-6400



TROY. Wonderful private setting in Sylvan Glen. Beautifully updated, 4 bedrooms, 2 1/2 baths, quality updates, walking distance to schools. All for \$167,500 (W553E) 641-1660



TROY. Boulan Ranch. Large kitchen with eating space and formal dining room. Full basement, large corner lot. Wonderful family neighborhood. \$144,900 (F470-E) 641-1660



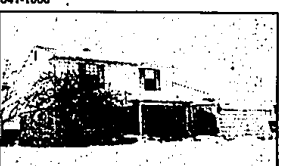
BEVERLY HILLS. Comfortable 3 bedroom, 1 1/2 bath brick Ranch with deck, finished lower level with 4th bedroom, central air, Birmingham schools, and 1 1/2 car garage. \$107,900 (R-311E) 647-6400



WEST BLOOMFIELD. Affordable 3 bedroom home with lake privileges on Walnut Lake. Move-in condition, double lot and lots of growth potential. Call today! \$109,700 (L-220E) 647-6400



WEST BLOOMFIELD. Canal lot on Upper Long Lake. Spacious Ranch with 3 bedrooms, 3 baths, walk-out lower level with fireplace and wet bar. Central air and much more. \$169,500 (M-254E) 647-6400



TROY. Maintenance-free 3 bedroom Colonial. Extra large family room. Sprinkling system, central air, 22x20 patio. Thermo windows. Beautifully landscaped. \$128,000 (S141-E) 641-1660

COUNSEL WITH CHAMBERLAIN!

ROYAL OAK UTAH ROCHESTER-SHELBY TROY BIRMINGHAM WEST BLOOMFIELD BLOOMFIELD

547-2000 739-1300 651-4100 641-1660 647-6400 851-4400 540-6777