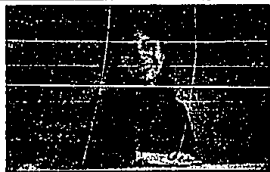


THURSDAY, APRIL 16, 1993

# CREATIVE LIVING

D



MARY KLEMIC

## Artist's exhibition gets back to nature

**K**aren Anne Klein gets back to nature in a big way in her exhibit continuing to April 30 at the Arnold Klein Gallery, 4520 N. Woodward in Royal Oak (call 647-7709).

The 33 colored pencil and watercolor works are arrangements of a variety of items, including stones, leaves, feathers, insects and American Indian artifacts. Gardens and yards offer treasures that the artist presents in deep colors that glow like gems.

Sometimes the frame is part of the art, bearing a line of feathers or resembling sticks. The white outlines of hands of family members or friends are sometimes featured.

Some arrangements are like personal collections, with the items like mementoes or representatives of a special place or time. Others are on a grander scale, presented as part of a wide landscape including mountains and winding roads.

### Paper chase

Works on paper by Jane Hammond are shown at the Ferguson/Preston Gallery, 796 N. Woodward in Birmingham. These are collage drawings on rice paper, with rubber stamps, transfers and block prints.

Cartoon characters, images that remind the viewer of old advertisements, diagrams and familiar faces are among the items that inhabit the poster-size works. Marilyn Monroe, a less famous blonde and a rose are arranged in an "American Beauty" painting.

The exhibit continues through April 24. Call 644-3855.

### Water wonderland

"Scenes of the Great Lakes" is the name of the exhibit by Karen Carter Van Camper at the Southfield Civic Center, 25000 Evergreen, to April 29. Van Camper's oils and watercolors convey the rich beauty of the scenes, from Mackinac Harbor to Quanton Waterfall.

Ships are shown racing or at rest. Ducks are "Lost in Reflection," seagulls soar. A tree is a majestic "Sentinel." Other trees surround a plain stairway. Some of the works are still life—an arrangement on a quilt, books and flowers near a window.

### Collection of friends

Award-winning artist Joan Brace, who had a one-person show in Paris last year, has said that "honors are nice, but painting is better."

Besides her own work, Brace has been active in the arts in many ways, including serving as director at the Scarab Club. She is now presenting an exhibit called "Collection of Artist Friends" through next week at the Lawrence Street Gallery, 29 W. Lawrence in Pontiac (call 334-6716).

The display features paintings and sculpture by some of her favorite artists, many of them from Michigan. Among them are a misty, rainbow-like work by Lorraine McCarty, a vibrant abstract painting by Audrey DiMarco, cheery yellow flowers by Suzanne Camp, a pointillist presentation by Peter Gilleran and a black and white photo of a forest by Fernando Diaz. A dragon and an unicorn sculpted by Eve and Mert Boss are there, as are horses painted by Leslie Berg.

Portrait subjects in the show include children and solemn youths by Carol Wald and Joseph Maniscalco. And Brace herself makes a few portrait appearances, in robust renderings by George Gravelding, Sam Karres and Edgar Jaeger, among others.

### Around and about

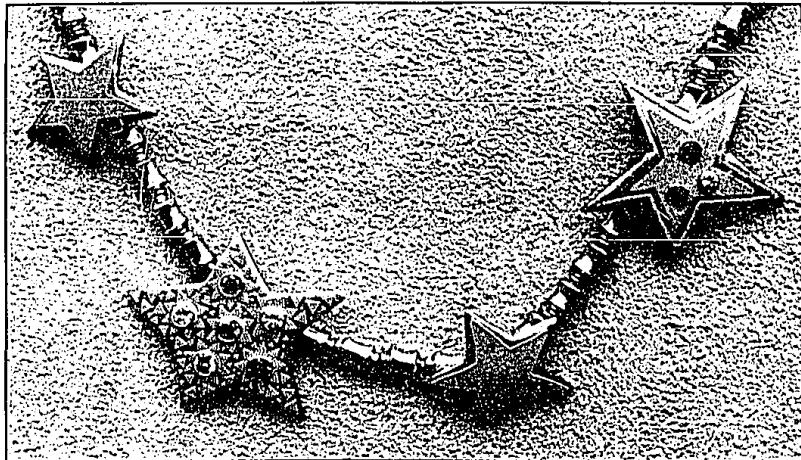
I'd like to hear from anyone who was involved in the Works Progress Administration, or who knows of a WPA work in the area. Call me at 644-1100, Ext. 245, or write me at 805 E. Maple, Birmingham 48009.

La Belle Provence, a Northville design studio specializing in European country style, will join faux finish artist Jennifer Guahan, artist Chris Woomer, design editor Sory Farman of Troy, Ferneble Pottery and Jacobson's in a design luncheon Thursday, April 22, at the Orchard Lake Country Club. The topic will be "The Art of Displaying Collections," and La Belle Provence will present a vignette showing examples of keynote speaker Farman's "unifying principles of design."

### Fun furniture

The Russell Klatt Gallery, 1467 S. Woodward in Birmingham, sets the stage for a special season with its current window display of art work by Barbara Caponigro. Caponigro paints furniture in bright, bold, whimsical patterns of her original design. Cats, dogs, fish and flowers adorn benches, chairs, jewelry boxes, desks and stools. Also exhibited are her delicate floral watercolors. Call the gallery at 647-5655.

Mary Klemic is editor of the Oakland County Creative Living section. You may call her at 644-1100, Ext. 245.



Starring role: Cornelia Roethel's jewelry includes gold asymmetrical stars featuring granules that are individually applied and rubies, diamonds and sapphires. Her art is exhibited at the Yaw Gallery in Birmingham.

## Designer has stars in eyes



BY MARY KLEMIC  
STAFF WRITER

When it comes to her art, Cornelia Roethel may have stars in her eyes, but she still has a strong vision.

Roethel makes 23-karat gold jewelry, accented with colorful stones and laden with tiny granules. Her new works are in asymmetrical star shapes.

Samples of her glittering art are on display to May 1 at the Yaw Gallery, 550 N. Woodward in Birmingham.

"I think the coming together of the classical sensibility of it and the extraordinary craftsmanship, beautiful quality stones," Nancy Yaw of the gallery said in describing what is special about Roethel's jewelry.

"It's a really wonderful (union) of the classically trained artist and classically trained jeweler."

Roethel's golden art includes bands, pins and necklaces, with such elements as gray pearls, rubies, diamonds and sapphires. Drops, hoops or both may be added onto her stud earrings to create different looks.

Jewelry by Cornelia Roethel takes a starring role, with its asymmetrical star shapes, fine stones and granules. Roethel enjoys the detailed work involved in creating the necklaces, earrings and pins that use rubies, sapphires and diamonds.

Roethel puts each granule on separately with a wet brush. The asymmetrical star shapes make a point, standing out from other stars.

"I love to do the work," Roethel said. "For days and days I concentrate on a little item. It's like meditation sometimes."

"It's part of myself," she said of her work.

Roethel was trained as a goldsmith in Munich. She worked as an apprentice and earned a master's degree. She moved to the United States in 1972, and opened her own studio in New York, specializing in the granulation technique. Her plans are to move back to Munich and open a studio there.

"I plan to explain more of this technique."

"I think I've brought it to a peak here."

Roethel likes to make beautiful items to be worn as adornment, "not just to show off."

"A star is something for everyone."



STAFF PHOTOS BY JOHN STORMELAND

Artistic look: Cornelia Roethel models one of her star-shaped pins. "A star is something for everyone," the artist said.

Roethel sees differences between American and European jewelry.

"I think American jewelry is bolder. I do think that in Europe jewelry has a higher level. (It had a) break-

through in Germany. Three museums (there) have shows on jewelry. It reached the level of art."

Call the gallery at 647-5470.

## Watercolorist tints his work with hope, joy

BY LINDA ANN CHOMIN  
SPECIAL WRITER

Artist/architect/author Louis G. Redstone uses intense energy and a kaleidoscope of color to create luminous watercolors filled with magic.

Livonia Arts Commission presents

the largest multimedia retrospective of his paintings to date at the Livonia Civic Center Library Art Gallery, Farmington Road and Five Mile. The exhibition started Monday and continues to May 15.

A reception in honor of Redstone's 90th birthday will be held 3-6 p.m.

Saturday, April 17, in the library atrium.

Watercolorists using a vibrant palette of pure color dating from 1956 to the present dominate the exhibition, which spans more than 60 years. However, several somber oils and wa-

tercolors from the 1930s signal the times.

"It goes back to 1932. It has the periods of the Depression, the social significance in the depths of the Depression," Redstone said in an interview.

See REDSTONE, 7D

## Art Beat

Arthbeat features various happenings in the suburban art world. Send news leads to: Creative Living, Observer & Eccentric Newspapers, 805 E. Maple, Birmingham 48009.

For information and reviews of musical performances, please turn to the Entertainment section.

### ■ SPARKLING SHOW

In celebration of Michigan Glass Month, the Posner Gallery presents works by Frank Gallo, Kurt Rundstatler, Toland Peter Sand, Victoria Palazzolo, Willes and Brand. The gallery is at 52407 Northwestern Highway in Farmington Hills. Hours are 11 a.m. to 5 p.m. Tuesday-Friday and 11 a.m. to 4 p.m. Saturday. Call 628-6450.

### ■ FOCUS ON AWARENESS

Monte Nagler, a fine art photographer based in Farmington Hills who writes a column for the Observer & Eccentric Newspapers, is exhibiting his award-winning, black and white landscape photographs through May 6 at The Trobridge retirement facility, 24111 Civic Center Road in Southfield. Nagler will open The Trobridge lecture series, "A awareness: Look About You!," 1 p.m. Thursday, April 22. His talk, featuring information on famous photographers, will occur-

age the senior audience to heighten their powers of observation. For reservations or more information, call The Trobridge at 352-0208.

### ■ BROADCAST NEWS

Some of the guest hosts this month on "Guess Who's Playing the Classics?" 8-10 p.m. Thursdays on WQRS-FM 105 have Oakland County connections. Tonight's host will be Charles "Chip" Brethen III of Birmingham, chairman and president of Telescope Inc. The guest host April 29 will be Dr. George Blum, president of the Michigan chapter of the American Academy of Pediatrics, who has a private practice in Southfield and plays the violin with the Southfield Symphony.

### ■ MAKING TRACKS

Artrain, the nation's only traveling museum in a train, will mark the start of its 1993 season in its Ann Arbor home with the debut of a new exhibit, "The Romance of Transportation: Vehicle and Voyage in North American Art," 11 a.m. to 7 p.m. Saturday and Sunday at NEW Center, 1100

N. Main. Art work in the show is on loan from numerous public and private collections, including the Cranbrook Academy of Art Museum in Bloomfield Hills. Walter Gierschick of West Bloomfield and Steve Schock of Pontiac were among the artists who participated in the project for the train's new exterior murals.

### ■ NOW SHOWING

Farmington Hills artist Edee Joppich is the featured artist at the Flint Institute of Arts this month. Her one-woman show is in the museum Founders Society sales and rental gallery. The eight collage paintings were completed last summer in her studio in Northport, where she owns a gallery. The work is being shown for the first time in this exhibit, Joppich's second solo show at the institute.

### ■ SERVING SAMPLES

Marty Figley, an advanced master gardener based in Birmingham who writes a column for the Observer & Eccentric Newspapers, will offer samples of her Dillyllicious and Mustardlicious mixes 11 a.m. to 5 p.m. Saturday, April 17, at Papa Joe's Fruit Market and Deli, 2025 S. Rochester Road in Rochester, and noon to 3 p.m. Saturday, April 24, at Berry's Grocery Store, 877 S. Hunter in Birmingham.