

# Country flavor in a contemporary ranch

A farmhouse porch adds a dash of country flavor to the Toucan, a 1½ story contemporary ranch style house designed for a family with older or grown children. The owners' suite is downstairs, leaving the upper rooms for children or guests.

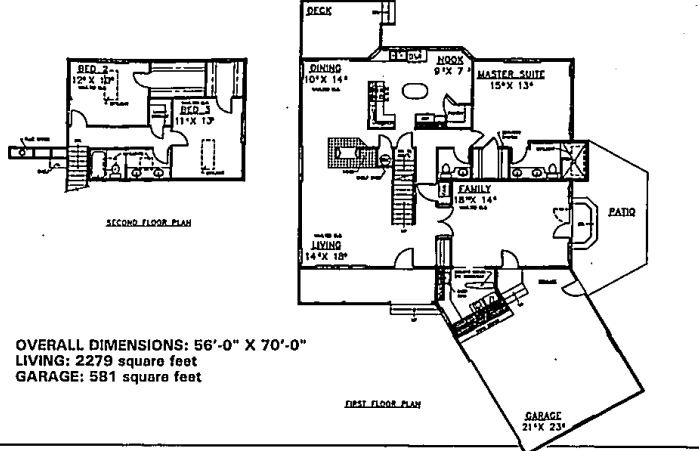
Both upstairs bedrooms have skylights, vaulted ceilings and walk-in closets. A walk-in linen closet is tucked into an alcove in the hallway and the skylit compartmentalized bathroom has twin vanities.

Descending the stairs into the high-ceilinged vaulted entry you can enjoy the view through a dormer window above the front door. A plant shelf on top of a closet next to the woodbox provides a space to display art objects or hanging plants. Basement access is directly under the main stairs.

On the main level, vaulted ceilings give an open, spacious feeling to the large family living and entertainment areas. The tiled hearth, see-through fireplace provides a cheerful focal point in both the dining and living room. Sliding glass doors brighten the dining room and allow easy access to a small deck.

Windows cover most of the bayed back wall of the kitchen, creating a bright, welcoming work area for informal gathering. Counter space is augmented by a central work island, and a walk-in pantry adds to the ample storage capacity. A small bathroom is between the kitchen and family room.

For a study plan of the Toucan (382-300), send \$7.50 to Landmark Designs, P.O. Box 2307, Eugene, Or. 97402, specifying plan name and number.



## Condominium class in Farmington

Robert Meisner, attorney and Observer & Eccentric columnist, will teach a class on advanced condominium operations 7-9 p.m. on five Tuesdays, beginning May 11 at Farmington Community School, 30416 Shilwassee.

The class is offered by the Wayne State University College of Lifelong Learning. Top-

ics will include areas of potential liability, avoiding legal disputes, changes in the condominium act, environmental concerns, review of bylaw enforcement procedures, running an effective meeting and alternatives for collecting assessments.

For more information, call 877-4865.

## Spring Has Sprung!

*And We Have The Power!*

Come and catch the excitement at Arrowon Pines, a condominium community that offers affordability, privacy and luxury in a MAINTENANCE FREE environment.

- 2 & 3 Bedroom Ranches and Townhomes
- Wooded Setting
- Walk-out Available
- Distinctive Designs

**Priced From \$131,900.**

For information, call Marsha 349-8808

ARROWON Pines

Open daily 12-5, Closed Thurs, Broken Welcome

NOVI

## Silley Pointe

condominiums

PHASE IV NOW OPEN

THREE PHASES HAVE SOLD QUICKLY!  
DON'T MISS PHASE IV  
We can't be beat!

★ 1 Floor, 2 Bedroom, 2 Bath Models ★ FROM \$68,500

- 3 Floor Plans
- Private Entrances
- GE Appliances
- Cathedral Ceilings
- Carport

Open Daily 12-5 • Closed Thursday  
981-6550  
SALES BY CENTURY 21, CASTELLI

## Everyone's Flocking In To See Our Fabulous New Models From \$169,900.

You'll find our brand new collection of detached condominium homes more affordable, more liveable and more luxurious than ever before!

We've added exciting new ranch, colonials and 1½ story loft plans with airy, open interiors, breathtaking wooded views and prime sites for walk-out levels.

So come see our furnished models and remarkably natural surroundings.

Now we're even easier to get to, via newly paved Halsted Road. Once here, you'll find The Lagoons suits a variety of lifestyles; most especially yours.

Children Walk Next Door To The New Pleasant Lake Elementary School

LAGOONS

Built From Nature's Blueprints  
Models Open Noon-6 p.m. (Closed Thursday)  
681-5000

## Tri-Mount Homes Asks... CAN YOU BELIEVE THIS ???... 2,175 SQ. FT. FOR ONLY... \$142,990

30 HOMES SOLD FIRST MONTH!!!

FORMAL DINING ROOM, FORMAL LIVING ROOM, 30'x30' FAMILY ROOM, FIREPLACE, FIRST FLOOR LAUNDRY, STUDY, GARAGE 21'x27'

4 Bedrooms, 2½ Baths, Living Room, Study, 1st Floor Laundry, Full Basement Including Family Room, Master Bath w/ Tub & Shower, Family Room w/ Fireplace, Formal Dining Room, 2-Car Attached Garage

These Luxurious Features are STANDARD:

- Oak Kitchen Cabinets
- Wood Bannisters
- Stained Woodwork throughout
- Insulated Thermo Brake Windows
- Whirlpool Dishwasher
- Garbage Disposal
- Range Hood Fan
- "Wax-Free" Linoleum
- Ceramic Tile Floors in upper Baths
- Electronic Ignition Furnace
- Prepped for Air Conditioning
- CARPETING THROUGHOUT

Just a Mile to famous Kensington State Park

In the Very Quaint Village of Milford

### Milford Heights

## Tri-Mount

Visit us Weekdays from 1 to 6, Saturday & Sunday Noon to 5. Take 96 to Milford Road Exit. Go North on Milford Rd for 4 Miles.

## A Compelling Reason To Move Up To West Bloomfield.

The Woods of Orchard Lake is the ultimate in sophisticated family living. You'll feel it in the impressive entrance walls, lush woodlands and beautiful rolling hills.

You'll see it in the classic new plans with refined features and custom upgrades like walk-out lower levels with wooded views.

Like all great treasures, you may need to follow the map to find The Woods of Orchard Lake. However, once you discover we're surrounded by all-sports lakes, Orchard Lake Country Club, and West Bloomfield's "National Exemplary Schools," you won't need to look any further.

Located south of Coopers Rd. on the west side of Old Orchard Trail  
Open Daily 12-6 p.m. (Closed Thurs.)

1993 Parade of Homes Award-Winning Model

THE WOODS OF ORCHARD LAKE  
363-8990

## Fox Run

CONDOMINIUMS

Custom Crafted Condominiums Located in Beautiful Woods of Waterford. Two and three bedroom ranch style homes from 1330 to 1675 square feet with first floor laundry, central air, 2 car attached garage, cedar deck, appliances and much more!

from \$108,900

Open 1-6 Daily  
Closed Wednesday & Thursday

(313) 683-9100  
Brokers Welcome

West of M-59 on the Northeast Corner of Elizabeth Lake Road and Hospital Road

Sales by A.F. Pauly Realtors (313) 674-4608