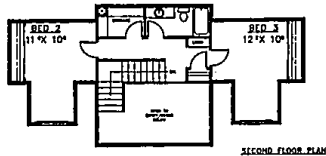
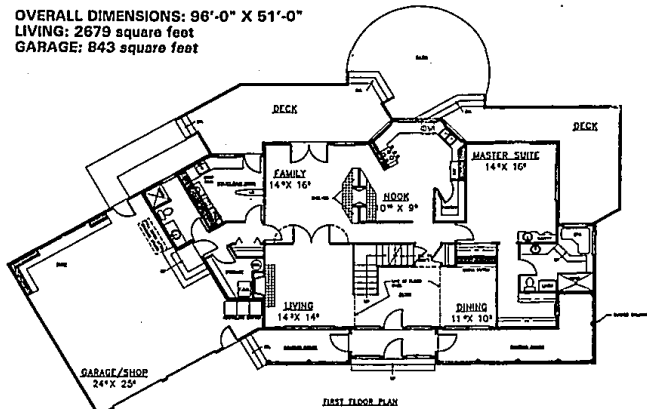


ROSEMEAD



SECOND FLOOR PLAN

OVERALL DIMENSIONS: 96'-0" X 51'-0"  
LIVING: 2679 square feet  
GARAGE: 843 square feet



FIRST FLOOR PLAN

# Traditional house with practicality of a contemporary

Pop-up dormers add old-fashioned charm to the Rosemead, a two-story country style house that features contemporary amenities and is rich in outdoor living.

A covered porch with railings and turned columns spans the facade and wraps around to the right. Behind the house, a deck and patio offer more recreational opportunities.

The section of the porch in front of the entrance is an airlock entry. Large, multi-paned windows flank the doors to this enclosed space as well as to the lofty inner foyer.

Formal rooms are at the front of the house, as is traditional. But in contemporary fashion, rooms are open and have lots of windows. The dining room has a built-in china hutch. In the living room, a fireplace serves as the focal point, and French doors open into the family room.

A two-sided fireplace warms the kitchen/family room. Fires can be enjoyed from the nook or the family room. French doors

provide access to the deck and patio. Counters, dishwasher and sink nestle into angles of a wide window bay with a wide view across the deck and beyond. A walk-in pantry provides ample storage space.

The master suite has a second vanity and basin outside the bathroom. Other amenities include a large walk-in closet, sliding glass doors that open onto a private deck, an large shower, and a two-person raised spa.

Upstairs, a landing overlooks the foyer. Both bedrooms are expanded by dormer windows and share a bathroom. Storage and linen closets are in the hallway.

More storage, a bathroom with a shower, and a large utility/mud room are between the family living areas and the garage.

For a study plan of the Rosemead (332-160), send \$7.50 to Landmark Designs, P.O. Box 2307, Eugene, Or. 97102, including plan name and number.

**A Compelling Reason To Move Up To West Bloomfield.**

The Woods of Orchard Lake is the ultimate in sophisticated family living. You'll feel it in the impressive entrance walls, lush woodlands and beautiful rolling hills.

**Introducing An Impressive New Array Of 1993 Designs Priced From The 298,000**

**1993 Parade of Homes Award-Winning Model!**

You'll see it in the classic new plans with refined features and custom upgrades like walk-out lower levels with wooded views.

Like all great treasures, you may need to follow the map to find The Woods of Orchard Lake. However, once you discover we're surrounded by all-sports lakes, Orchard Lake Country Club, and West Bloomfield's "National Exemplary Schools," you won't need to look any further.

Located south of Commerce Rd. on the west side of Old Orchard Trail  
Open Daily 12-6 p.m. (Closed Thurs.)

**THE WOODS OF ORCHARD LAKE**  
363-8990

Presented by  
Richard Rosin & S.R. Lombard  
Development Corporation

**From 103,900**

**Great Value, Exceptional Quality. Carriage Park**

- 2-3 Bedrooms
- Full Basement
- 2 1/2 Baths
- 2 Car Attached Garage
- Spacious, Open Floor Plans

**Immediate Occupancy**  
Kathy Townsend  
981-9420

Model Hours  
12:00-5:00  
Daily  
Closed Thursday

Ford Rd. 275  
Cherry Hill  
Cypress Creek

**What Are You Waiting For?**

- ✓ Right Place
- ✓ Right Price
- ✓ Right Plans

**From \$139,900**

- Beautiful Single Family Homes loaded with amenities
- Spacious 1/3-acre home site
- Ann Arbor public schools
- Low...low taxes
- Sidewalks

Brokers Welcome

**BEACON SQUARE**  
Models & Sales Office Open Daily Noon 11 6 pm  
971-0600

**PINE TRAIL**

**Detached Ranch Condominiums In Rochester Hills**

**Only 6 Left!**

Furnished model now open

We have combined the best of the old and the new to bring you the homes of Pine Trail. Sit back and relax with friendly neighbors on covered porches amidst mature trees and carefully tended landscaping. Enjoy outstanding craftsmanship throughout your home, with features like oak flooring, kitchens with work islands, whirlpool tubs, cathedral ceilings, cedar decks and a maintenance free lifestyle!

**PRICE FROM \$189,000**  
**656-9810**

Open Weekdays 1-6, Weekends 12-5 - Closed Thursday & Friday  
Located at the southwest corner of Avon Road and John L. Road.

AVON  
ROCHESTER  
AUBURN  
LORRAINE

**Northville Township**

**Unbeatable Value In an Exceptional Setting!**

- Large, single-family homes with impressive elevations, high-style interiors and side-entry garages
- Many wooded and ponds sites available
- Plymouth/Canton Schools
- Minutes from I-275, I-96, Laurel Park Place and Downtown Northville

**From the \$260's**

On Haggerty Rd., 1/2 mile south of 8 Mile Rd.

**WOODSIDE VILLAGE**  
464-9420  
Open Daily 1-6 p.m. • Weekends 1-6 p.m.  
Arbor Dev. Co. • JAD Homes  
S.R. Jacobson Dev. Corp.  
Brokers Welcome

**Fox Run CONDOMINIUMS**

Custom Crafted Condominiums Located In Beautiful Woods of Waterford. Two and three bedroom ranch style homes from 1330 to 1675 square feet with first floor laundry, central air, 2 car attached garage, cedar deck, appliances and much more!

from  
**\$108,900**

Open 1-6 Daily  
Closed Wednesday  
& Thursday

(313) **683-9100**  
Brokers Welcome

(313) **674-4608**

Sales by  
**A.F. Pauly Realtors**

West of M-59 on the Northeast Corner of Elizabeth Lake Road and Hospital Road