

Jack Demmer Ford Used Cars • Jack Demmer Ford Used Cars • Jack Demmer Ford Used Cars • Jack Demmer Ford Used Cars

# We're A Lot Closer Than You Think

721-5020  
LOT #2

721-6560 • LOT #1 • 721-6560 • LOT #1 • 721-6560

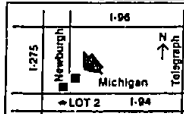
| FORD   |  | LINCOLN  |  | MERCURY  |  | VANS   |   | TRUCKS  |   |   |   |   |  |  |  |  |   |  |  |  |   |  |   |   |   |   |  |  |  |  |   |  |   |  |   |  |   |   |   |   |  |  |   |  |   |  |   |  |   |  |   |  |   |   |  |
|--|--|--|--|--|--|--|---|---|---|---|---|---|--|--|--|--|---|--|--|--|---|--|---|---|---|---|--|--|--|--|---|--|---|--|---|--|---|---|---|---|--|--|---|--|---|--|---|--|---|--|---|--|---|---|--|
| 1986 TAURUS 4 DOOR<br>6 cylinder, automatic, air & more<br><b>\$3395</b>         | 1986 CAVALIER RS 2 DOOR<br>Automatic, air<br><b>\$2295</b>   | 1988 MUSTANG GT<br>Only 37,000 miles! Automatic, air, sunroof, loaded.<br><b>\$7995</b>  | 1988 CONTINENTAL<br>"SIGNATURE SERIES"<br>Carriage roof, inside clean, window tint, JBL, memory seats, low miles.<br><b>\$8495</b> | 1989 Cougar<br>Carriage roof, wire, loaded, only 33,000 miles.<br><b>\$8695</b>                              | 1991 Aerostar XLT Extended<br>7 passenger, high cap, air, automatic, seat bed option, loaded, green.<br><b>\$11,895</b>  | 1992 Ranger XLT<br>Air, power steering, power brakes, alloy wheels.<br><b>\$7595</b>           | 1991 FESTIVA<br>Automatic, air, FM, cassette, 20,000 miles, 54MPG<br><b>\$5495</b>  | 1987 LEGARON PREMIER<br>Automatic, air, power windows, locks & seats, leather, two-tone, only.<br><b>\$4995</b> | 1991 T-BIRDS<br>8 to choose, low miles, all loaded. From:<br><b>\$9995</b>        | 1989 Mark VII Bill Bliss<br>Leather, JBL Sound, loaded.<br><b>\$11,695</b>  | 1991 CAPRI CONVERTIBLE<br>Was \$2295<br>Now<br><b>\$7995</b>  | 1990 Aerostar Wagon XL-Plus<br>7 passenger, power windows, power locks, cruise, air, automatic, air, iron wheels, A.C. Extended!<br><b>\$8995</b> | 1988 BRONCO II 4x4<br>Air, loaded.<br><b>\$8495</b>  | 1991 TRACER 4 DOOR<br>5 speed, 30,000 miles, only<br><b>\$4995</b>               | 1986 LYNX XR 3<br>5 speed, air, low miles<br><b>\$3395</b>   | 1990 Taurus LX Wagon<br>Leather, 3.9 Liter, automatic, air, keyless entry, 8 passenger, cruise, stereo, loaded.<br><b>\$8995</b> | 1992 Continental<br>"Ford Motor Company Car"<br>Leather, air, comfort convenience group, alloy wheels.<br><b>\$17,995</b> | 1992 Caprice "Hard Top"<br>Convertible XR2<br>Loaded, "Green."<br><b>\$13,695</b>                            | 1991 FORD CLUB WAGON XLT 351<br>Electronic, automatic, overdrive, 8 pass, dual air, trailer tow package, leather, alloy wheels, 22,000 miles.<br><b>\$14,995</b> | 1988 FORD F350 STAKE TRUCK 450<br>12 Foot bed.<br><b>\$3795</b>                                | 1981 FORD F100<br>6 cylinder, automatic, clean<br><b>\$1895</b>   | 1988 BRONCO XLT<br>V8, automatic, power windows, A locks, air, stereo<br><b>\$7295</b>     | 1990 Thunderbird Super Coupe<br>Automatic, loaded, only<br><b>\$9595</b>          | 1991 Town Car Signature Series<br>Power windows, locks, mirrors and seats, digital dash, alloy wheels, keyless entry, cruise, air, LOADED! 28,000 miles.<br><b>\$17,495</b> | 1991 TOPAZ XR5<br>Was \$7995<br>Now<br><b>\$7795</b>  | 1991 Aerostar Wagon "Four Wheel Drive"<br>Automatic, air, power windows and locks, cruise, air, alloy wheels, 7 passenger.<br><b>\$11,895</b> | 1991 RANGER<br>Air, sport bucket interior, alloy wheels, cassette, loaded.<br><b>\$6495</b>  | 1985 RANGER<br>4 cylinder, 5 speed, power steering, only<br><b>\$1995</b>        | 1989 PROBE LX<br>Automatic, air, power windows, A locks, air, stereo, cruise, FM cassette, only<br><b>\$5395</b> | 1992 Crown Victoria LX 4 Door<br>Power windows, power locks, seat and mirrors, automatic, air, loaded.<br><b>\$11,495</b>    | 1989 CONTINENTAL SIG<br>Was \$11,495<br>Now<br><b>\$10,995</b>                      | 1991 Tracer<br>31,000 miles, power steering, power brakes.<br><b>\$4995</b>                                  | 1991 Ford Utility Stop Van<br>Diesel, Aluminum, Ultimate Van Body, 18 ft.<br><b>\$15,995</b>            | 1991 Ford F150 Super Cab XLT 302<br>Automatic, air, loaded.<br><b>\$12,975</b>                 | 1986 BRONCO II EDDIE BAUER<br>6 cylinder, 4x4, automatic, loaded, only<br><b>\$4295</b>                                     | 1988 GRAN MARQUIS 4 DOOR<br>Air, power windows, locks, seats & more, only<br><b>\$6995</b> | 1992 Escort LX<br>Air, power steering, power brakes.<br><b>\$6995</b>             | 1991 Continental<br>Moonroof, leather, keyless entry, low miles.<br><b>\$16,995</b> | 1991 Cougar LS "Blue Max Edition"<br>Moonroof, digital dash, keyless entry.<br><b>\$11,895</b>                          | 1989 FORD BIVOAC CONVERSION VAN<br>4 Captain chairs, bed, automatic, air, paint stripes, loaded.<br><b>\$7495</b> | 1991 Explorer 4 Door Eddie Bauer<br>Leather, 4x4, green, loaded, low miles.<br><b>\$16,595</b>                                       | 1987 AEROSTAR XL<br>6 cylinder, automatic, air, passenger, only<br><b>\$5995</b> | 1987 MUSTANG LX<br>5 cylinder, automatic, air, power locks, only<br><b>\$4295</b> | 1992 Probe GL<br>Automatic, air, moonroof, "Green", power steering, power brakes, stereo, detector, loaded.<br><b>\$9795</b> | 1991 Mark VII "LSC"<br>Moonroof, leather, keyless entry, loaded.<br><b>\$18,495</b> | 1992 Topaz GS<br>Air, power steering, power brakes, loaded, alloy wheels, only 9,100 miles.<br><b>\$7995</b> | 1990 Ford Super Wagon XLT<br>15 passenger, automatic, tu-tone, dual air, V8, loaded.<br><b>\$12,995</b> | 1992 Bronco Eddie Bauer<br>Leather, 351, automatic, air, only 12,000 miles.<br><b>\$18,995</b> | 1988 AEROSTAR XLT<br>Automatic, air, power windows, passenger, power locks, air, stereo, cruise, cassette.<br><b>\$6995</b> | 1987 FIERO<br>Automatic, air, power windows<br><b>\$3495</b> | 1991 Mustang "GT"<br>Convertible<br>Red, 5 speed, air, loaded.<br><b>\$13,995</b> | 1990 CONTINENTAL<br>Was \$12,495<br>Now<br><b>\$11,995</b> | 1991 Tracer "LTS"<br>Moonroof, power windows, power locks, power steering, power brakes, 22,000 miles.<br><b>\$7995</b> | 1990 AEROSTAR EXTENDED 4x4 WAGON<br>Automatic, dual air, 7 passenger, seat bed option.<br><b>\$10,995</b> | 1991 Ford F250 XLT<br>Snow plow, 251, automatic, air, power windows, power locks, cruise, air, only 12,000 miles.<br><b>\$15,995</b> |
| 1991 TRACER 4 DOOR<br>5 speed, 30,000 miles, only<br><b>\$4995</b>               | 1986 LYNX XR 3<br>5 speed, air, low miles<br><b>\$3395</b>   | 1990 Taurus LX Wagon<br>Leather, 3.9 Liter, automatic, air, keyless entry, 8 passenger, cruise, stereo, loaded.<br><b>\$8995</b> | 1992 Continental<br>"Ford Motor Company Car"<br>Leather, air, comfort convenience group, alloy wheels.<br><b>\$17,995</b>          | 1992 Caprice "Hard Top"<br>Convertible XR2<br>Loaded, "Green."<br><b>\$13,695</b>                            | 1991 FORD CLUB WAGON XLT 351<br>Electronic, automatic, overdrive, 8 pass, dual air, trailer tow package, leather, alloy wheels, 22,000 miles.<br><b>\$14,995</b> | 1988 FORD F350 STAKE TRUCK 450<br>12 Foot bed.<br><b>\$3795</b>                                | 1981 FORD F100<br>6 cylinder, automatic, clean<br><b>\$1895</b>   | 1988 BRONCO XLT<br>V8, automatic, power windows, A locks, air, stereo<br><b>\$7295</b>                          | 1990 Thunderbird Super Coupe<br>Automatic, loaded, only<br><b>\$9595</b>          | 1991 Town Car Signature Series<br>Power windows, locks, mirrors and seats, digital dash, alloy wheels, keyless entry, cruise, air, LOADED! 28,000 miles.<br><b>\$17,495</b> | 1991 TOPAZ XR5<br>Was \$7995<br>Now<br><b>\$7795</b>  | 1991 Aerostar Wagon "Four Wheel Drive"<br>Automatic, air, power windows and locks, cruise, air, alloy wheels, 7 passenger.<br><b>\$11,895</b>     | 1991 RANGER<br>Air, sport bucket interior, alloy wheels, cassette, loaded.<br><b>\$6495</b>  | 1985 RANGER<br>4 cylinder, 5 speed, power steering, only<br><b>\$1995</b>        | 1989 PROBE LX<br>Automatic, air, power windows, A locks, air, stereo, cruise, FM cassette, only<br><b>\$5395</b> | 1992 Crown Victoria LX 4 Door<br>Power windows, power locks, seat and mirrors, automatic, air, loaded.<br><b>\$11,495</b>        | 1989 CONTINENTAL SIG<br>Was \$11,495<br>Now<br><b>\$10,995</b>  | 1991 Tracer<br>31,000 miles, power steering, power brakes.<br><b>\$4995</b>                                  | 1991 Ford Utility Stop Van<br>Diesel, Aluminum, Ultimate Van Body, 18 ft.<br><b>\$15,995</b>   | 1991 Ford F150 Super Cab XLT 302<br>Automatic, air, loaded.<br><b>\$12,975</b>                 | 1986 BRONCO II EDDIE BAUER<br>6 cylinder, 4x4, automatic, loaded, only<br><b>\$4295</b>                                     | 1988 GRAN MARQUIS 4 DOOR<br>Air, power windows, locks, seats & more, only<br><b>\$6995</b> | 1992 Escort LX<br>Air, power steering, power brakes.<br><b>\$6995</b>             | 1991 Continental<br>Moonroof, leather, keyless entry, low miles.<br><b>\$16,995</b>   | 1991 Cougar LS "Blue Max Edition"<br>Moonroof, digital dash, keyless entry.<br><b>\$11,895</b>                          | 1989 FORD BIVOAC CONVERSION VAN<br>4 Captain chairs, bed, automatic, air, paint stripes, loaded.<br><b>\$7495</b>                             | 1991 Explorer 4 Door Eddie Bauer<br>Leather, 4x4, green, loaded, low miles.<br><b>\$16,595</b>                                       | 1987 AEROSTAR XL<br>6 cylinder, automatic, air, passenger, only<br><b>\$5995</b> | 1987 MUSTANG LX<br>5 cylinder, automatic, air, power locks, only<br><b>\$4295</b>                                | 1992 Probe GL<br>Automatic, air, moonroof, "Green", power steering, power brakes, stereo, detector, loaded.<br><b>\$9795</b> | 1991 Mark VII "LSC"<br>Moonroof, leather, keyless entry, loaded.<br><b>\$18,495</b> | 1992 Topaz GS<br>Air, power steering, power brakes, loaded, alloy wheels, only 9,100 miles.<br><b>\$7995</b> | 1990 Ford Super Wagon XLT<br>15 passenger, automatic, tu-tone, dual air, V8, loaded.<br><b>\$12,995</b> | 1992 Bronco Eddie Bauer<br>Leather, 351, automatic, air, only 12,000 miles.<br><b>\$18,995</b> | 1988 AEROSTAR XLT<br>Automatic, air, power windows, passenger, power locks, air, stereo, cruise, cassette.<br><b>\$6995</b> | 1987 FIERO<br>Automatic, air, power windows<br><b>\$3495</b>                               | 1991 Mustang "GT"<br>Convertible<br>Red, 5 speed, air, loaded.<br><b>\$13,995</b> | 1990 CONTINENTAL<br>Was \$12,495<br>Now<br><b>\$11,995</b>                          | 1991 Tracer "LTS"<br>Moonroof, power windows, power locks, power steering, power brakes, 22,000 miles.<br><b>\$7995</b> | 1990 AEROSTAR EXTENDED 4x4 WAGON<br>Automatic, dual air, 7 passenger, seat bed option.<br><b>\$10,995</b>         | 1991 Ford F250 XLT<br>Snow plow, 251, automatic, air, power windows, power locks, cruise, air, only 12,000 miles.<br><b>\$15,995</b> |  |   |  |   |  |   |  |   |  |   |  |   |   |  |
| 1985 RANGER<br>4 cylinder, 5 speed, power steering, only<br><b>\$1995</b>        | 1989 PROBE LX<br>Automatic, air, power windows, A locks, air, stereo, cruise, FM cassette, only<br><b>\$5395</b> | 1992 Crown Victoria LX 4 Door<br>Power windows, power locks, seat and mirrors, automatic, air, loaded.<br><b>\$11,495</b>        | 1989 CONTINENTAL SIG<br>Was \$11,495<br>Now<br><b>\$10,995</b>   | 1991 Tracer<br>31,000 miles, power steering, power brakes.<br><b>\$4995</b>                                  | 1991 Ford Utility Stop Van<br>Diesel, Aluminum, Ultimate Van Body, 18 ft.<br><b>\$15,995</b>   | 1991 Ford F150 Super Cab XLT 302<br>Automatic, air, loaded.<br><b>\$12,975</b>                 | 1986 BRONCO II EDDIE BAUER<br>6 cylinder, 4x4, automatic, loaded, only<br><b>\$4295</b>                                     | 1988 GRAN MARQUIS 4 DOOR<br>Air, power windows, locks, seats & more, only<br><b>\$6995</b>                      | 1992 Escort LX<br>Air, power steering, power brakes.<br><b>\$6995</b>             | 1991 Continental<br>Moonroof, leather, keyless entry, low miles.<br><b>\$16,995</b>   | 1991 Cougar LS "Blue Max Edition"<br>Moonroof, digital dash, keyless entry.<br><b>\$11,895</b>                          | 1989 FORD BIVOAC CONVERSION VAN<br>4 Captain chairs, bed, automatic, air, paint stripes, loaded.<br><b>\$7495</b>                                 | 1991 Explorer 4 Door Eddie Bauer<br>Leather, 4x4, green, loaded, low miles.<br><b>\$16,595</b>                                       | 1987 AEROSTAR XL<br>6 cylinder, automatic, air, passenger, only<br><b>\$5995</b> | 1987 MUSTANG LX<br>5 cylinder, automatic, air, power locks, only<br><b>\$4295</b>                                | 1992 Probe GL<br>Automatic, air, moonroof, "Green", power steering, power brakes, stereo, detector, loaded.<br><b>\$9795</b>     | 1991 Mark VII "LSC"<br>Moonroof, leather, keyless entry, loaded.<br><b>\$18,495</b>                                       | 1992 Topaz GS<br>Air, power steering, power brakes, loaded, alloy wheels, only 9,100 miles.<br><b>\$7995</b> | 1990 Ford Super Wagon XLT<br>15 passenger, automatic, tu-tone, dual air, V8, loaded.<br><b>\$12,995</b>  | 1992 Bronco Eddie Bauer<br>Leather, 351, automatic, air, only 12,000 miles.<br><b>\$18,995</b> | 1988 AEROSTAR XLT<br>Automatic, air, power windows, passenger, power locks, air, stereo, cruise, cassette.<br><b>\$6995</b> | 1987 FIERO<br>Automatic, air, power windows<br><b>\$3495</b>                               | 1991 Mustang "GT"<br>Convertible<br>Red, 5 speed, air, loaded.<br><b>\$13,995</b> | 1990 CONTINENTAL<br>Was \$12,495<br>Now<br><b>\$11,995</b>  | 1991 Tracer "LTS"<br>Moonroof, power windows, power locks, power steering, power brakes, 22,000 miles.<br><b>\$7995</b> | 1990 AEROSTAR EXTENDED 4x4 WAGON<br>Automatic, dual air, 7 passenger, seat bed option.<br><b>\$10,995</b>                                     | 1991 Ford F250 XLT<br>Snow plow, 251, automatic, air, power windows, power locks, cruise, air, only 12,000 miles.<br><b>\$15,995</b> |  |  |  |   |  |   |  |   |  |   |   |   |   |  |  |   |  |   |  |   |  |   |  |   |  |   |   |  |
| 1987 AEROSTAR XL<br>6 cylinder, automatic, air, passenger, only<br><b>\$5995</b> | 1987 MUSTANG LX<br>5 cylinder, automatic, air, power locks, only<br><b>\$4295</b>                                | 1992 Probe GL<br>Automatic, air, moonroof, "Green", power steering, power brakes, stereo, detector, loaded.<br><b>\$9795</b>     | 1991 Mark VII "LSC"<br>Moonroof, leather, keyless entry, loaded.<br><b>\$18,495</b>  | 1992 Topaz GS<br>Air, power steering, power brakes, loaded, alloy wheels, only 9,100 miles.<br><b>\$7995</b> | 1990 Ford Super Wagon XLT<br>15 passenger, automatic, tu-tone, dual air, V8, loaded.<br><b>\$12,995</b>  | 1992 Bronco Eddie Bauer<br>Leather, 351, automatic, air, only 12,000 miles.<br><b>\$18,995</b> | 1988 AEROSTAR XLT<br>Automatic, air, power windows, passenger, power locks, air, stereo, cruise, cassette.<br><b>\$6995</b> | 1987 FIERO<br>Automatic, air, power windows<br><b>\$3495</b>  | 1991 Mustang "GT"<br>Convertible<br>Red, 5 speed, air, loaded.<br><b>\$13,995</b> | 1990 CONTINENTAL<br>Was \$12,495<br>Now<br><b>\$11,995</b>  | 1991 Tracer "LTS"<br>Moonroof, power windows, power locks, power steering, power brakes, 22,000 miles.<br><b>\$7995</b> | 1990 AEROSTAR EXTENDED 4x4 WAGON<br>Automatic, dual air, 7 passenger, seat bed option.<br><b>\$10,995</b>   | 1991 Ford F250 XLT<br>Snow plow, 251, automatic, air, power windows, power locks, cruise, air, only 12,000 miles.<br><b>\$15,995</b> |  |  |  |   |  |  |  |   |  |   |   |   |   |  |  |  |  |   |  |   |  |   |  |   |   |   |   |  |  |   |  |   |  |   |  |   |  |   |  |   |   |  |

SALES OPEN MON.-& THURS. 8:00 A.M.-9:00 P.M.  
TUES., WED., FRI. 8:00 A.M.-6:00 P.M.  
SERVICE NOW OPEN MON. & THURS. 7:30 A.M.-9:00 P.M.

721-2600 • 1-800-ASK-FORD  
**721-6560**



37300 Michigan Avenue at Newburgh Road, Wayne  
I-275 Exit 22, Two Miles East

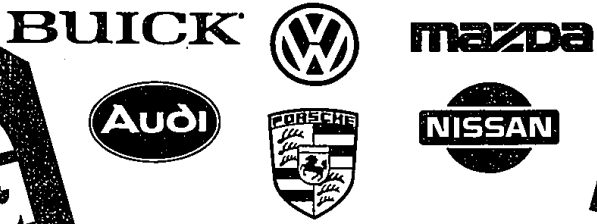


OVER 200  
USED CARS  
& TRUCKS  
IN STOCK

Jack Demmer Ford Used Cars • Jack Demmer Ford Used Cars • Jack Demmer Ford Used Cars • Jack Demmer Ford Used Cars

# BILL COOK'S GOT 'EM... & WE'VE GOT TO GET RID OF 'EM!

**30 HOUR RED TAG Clearance**



**\$10.2 MILLION IN INVENTORY**

TUES. MAY 11th & WED. MAY 12th  
9 am to 6 pm  
THURSDAY, MAY 13th  
9 am to 9 pm

**ALL NEW & USED MODELS DRASTICALLY REDUCED FOR IMMEDIATE SALE!**

Hurry... These Prices Won't Last Past Thursday at 9 PM!

"BILL COOK'S Got 'Em All For You!"



**Automotive Group of Farmington Hills**  
GRAND RIVER at 10 MILE  
OPEN SATURDAYS • SALES & SERVICE

**471-0800**  
**471-0044**

BUICK MAZDA  
NISSAN IMPORTS