

Honesty, Integrity,
Personal Professional
Real Estate Services!
COUNSEL WITH
CHAMBERLAIN!

Chamberlain, REALTORS®

HOMEQUITY
RELOCATION CENTER



ORCHARD LAKE. Backing to lush woodlands this 4 bedroom Contemporary is filled with the best of everything! Great room, 2-story dining room, finished lower level. \$399,000 (C449E) 851-4400



BLOOMFIELD HILLS. Elegant and comfortable. A perfect home with a 2 story exercise pool/sunroom with loft, library, family room, 2nd kitchen and walk-out lower level. \$749,000 (B104E) 647-6400



BLOOMFIELD HILLS. Quality Plus! 4 bedrooms, 2 full and 2 half baths, 2nd floor laundry, finished room in basement. Great Executive home. Home Warranty. \$399,900 (BW755E) 641-1660



BLOOMFIELD TWP. Beautiful 4 bedroom Contemporary. Neutral decor, cathedral ceilings, double fireplace, upper loft sitting room, large deck. Backs to commons. \$254,000 (Y516E) 851-4400



BIRMINGHAM. Poppleton Park Colonial with 4 bedrooms, 2 1/2 baths, family room and full basement. Great location, just a short distance to the park. Fireplace and more! \$292,500 (M669E) 647-6400



ROCHESTER HILLS. Stunning Tudor, 2 1/2 baths, 4 bedrooms, professionally landscaped, automatic sprinklers, full security system, finished basement, 3+ car garage. \$289,900 (QR329E) 641-1660



WEST BLOOMFIELD. Magnificent Waterick 4 bedroom, 4 1/2 bath split-level Contemporary sizzles with amenities. 2 fireplaces, 2 wet bars and Bloomfield Hills schools. \$279,900 (C213E) 647-6400



OPEN SUNDAY 1-4
FARMINGTON HILLS. 30338 Congress Ct. (N. of Grand River, W. of Drake). Impressive Georgian Colonial. 3 bedrooms, family room, 2 1/2 baths, cul-de-sac setting. \$199,500 (C360E) 851-4400



TROY. 2 1/2 acres on Natural Beauty road overlooking the river. Contemporary feel, expandable. Walk-out lower level and two 2 1/2 car garages! Birmingham schools. \$239,900 (B410E) 647-6400



BIRMINGHAM. Charming Cape Cod in Birmingham Hills sub features 4 bedrooms, 2 1/2 baths, 2 fireplaces, Florida room and a magnificent Inground pool, updated kitchen. \$214,777 (N118E) 647-6400



TROY. Red Maple Court - Charming spacious 4 bedroom, 2 1/2 bath New England Colonial on tremendous private treed site. \$269,900 (RMC241E) 641-1660



BLOOMFIELD. Come see this most beautiful unit in Adams Woods. Newly decorated to perfection with light wood floors, newer carpeting, wood railing to upper level. \$184,000 (T120E) 647-6400



WEST BLOOMFIELD. Large stately family Colonial on over an acre lot. Dining room, family room, natural fireplace, updated kitchen, finished basement, 1st floor laundry. \$224,000 (V744E) 647-6400



BEVERLY HILLS. Beautifully decorated 3 bedroom, 1 1/2 bath Ranch on treed lot offers top quality remodeled kitchen and dynamite family room addition. Call today! \$159,900 (W303E) 647-6400



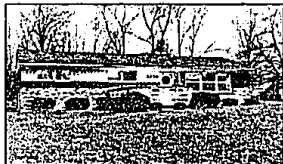
FARMINGTON HILLS. Close to everything, yet very private at end of court. 4 bedrooms, family room, living room, library, dining room, 2 1/2 baths, cul-de-sac setting. \$199,900 (C303E) 851-4400



FARMINGTON HILLS. Super family area. This lovely Tudor features 3 bedrooms, large family room with cathedral ceiling and a first floor laundry. Dream house! \$125,777 (F214E) 647-6400



WEST BLOOMFIELD. Large 5 bedroom Winged Colonial on beautifully landscaped paradise. Library, family room, finished walk-out with "pub." Fine Lake privileges. \$189,900 (F372E) 851-4400



WEST BLOOMFIELD. Lake area. Affordable starter home. Much updating and redecorating. All new bathrooms, newer dishwasher. Quiet location, Cass Lake privileges. \$107,900 (L525E) 851-4400



TROY. Custom built 3 bedroom, 2 1/2 bath brick/aluminum ranch with side entry garage on large private lot. Mature trees, deck and patio. Immediate possession. \$169,900 (H617E) 641-1660



TROY. Immediate occupancy, 4 bedrooms, 2 1/2 baths, updated kitchen, great neighborhood, well maintained, 2 year old furnace, new Troy High. \$139,900 (L339E) 641-1660



BLOOMFIELD. 4 bedroom, 2 1/2 bath Colonial. Many recent updates. New kitchen, new carpeting, country decor, sub has swim club. \$179,900 (H162E) 641-1660



WEST BLOOMFIELD. Affordable 3 bedroom home with lake privileges on Walnut Lake. Move-in condition, double lot and lots of growth potential. Call today! \$103,700 (L220E) 647-6400



BIRMINGHAM. Freshly painted and newly carpeted, this 3 bedroom home is close to shopping and transportation. Large kitchen and full basement. Great value! \$99,900 (L122E) 647-6400



SOUTHFIELD. Birmingham Schools. Spacious 3 bedroom Tri-Level in family neighborhood. Family room with fireplace, 2 1/2 baths, beautiful back yard. \$124,500 (B186E) 851-4400



WEST BLOOMFIELD. Canal lot on Upper Long Lake. Spacious Ranch with 3 bedrooms, 3 baths, walk-out lower level with fireplace and wet bar, central air and much more. \$169,500 (M254E) 647-6400



BIRMINGHAM. Good value with open floor plan and some updating. Close to shopping and transportation. Immediate occupancy and appliances stay. Call for appointment. \$79,900 (B139E) 647-6400



ROYAL OAK. Beautifully decorated 2 bedroom, 1 bath, half of a duplex with full basement, private patio with fabulous view and one year home warranty included. \$74,900 (O252E) 647-6400



WEST BLOOMFIELD. Totally updated detached Contemporary Ranch Condo nestled in a unique, secluded wooded pine tree setting. Ceramic tile foyer, open floor plan. \$164,900 (F228E) 851-4400

COUNSEL WITH CHAMBERLAIN!

ROYAL OAK UTICA ROCHESTER HILLS TROY BIRMINGHAM WEST BLOOMFIELD BLOOMFIELD
547-2000 739-1300 651-4100 641-1660 647-6400 851-4400 540-6777