

EXHIBITIONS

Send calendar items about Oakland County art gallery exhibitions to The Eccentric, 805 E. Maple, Birmingham 48009, fax 644-3114. Send items about Wayne County exhibitions to The Observer, 36251 Schoolcraft, Livonia 48150, fax 591-7279. Attention: Creative Living editor.

JANICE CHARACH EPSTEIN
WORLD GALLERY
 Thursday, June 24 — Three separate photographic documentations of Jews throughout the world will be exhibited through July 29. Opening reception 6-8:30 p.m. Thursday. The displays are "Anvros Munchon 1 Buenos (Good Years and Many More)" by noted photographer Laurence Salzman, which explores Turkish Jewish-Spanish culture; "Faith and Survival" by Peggy Myers, the wife of an American doctor who was sent to Ethiopia to set up medical programs, which is about Jews of Ethiopia; and "Jews of Greece," a presentation of contemporary Greek culture. Hours are 11 a.m. to 6 p.m. Monday-Wednesday, 11 a.m. to 8 p.m. Thursday, 11 a.m. to 4 p.m. Sunday. In the Jewish Community Center at 6600 W. Maple in West Bloomfield, 661-1000, Ext. 470. Decent tours available upon request.

GALERIE INTERNATIONALE
 Friday, June 25 — "Modern Masters — Works on Paper" continues through Aug. 1. Opening reception 6-9 p.m. Friday. Featured are original lithographs and linocuts by George Braque, Marc Chagall, Salvador Dali, Andre Masson, Joan Miro and Pablo Picasso. Hours are 9 a.m. to 6 p.m. Monday-Saturday, to 8 p.m. Thursday, noon to 6 p.m. Sunday, 4066 Telegraph, Bloomfield Hills, 644-5870.

LOOKING AHEAD

What to watch for in Creative Living next week:
 ■ A look at Michigan Outdoor Sculpture IV in Southfield.
 ■ "Cypsy Moth: Suburban Scavage," part 3 of an in-depth look at a perennial outdoor pest.
 ■ Exhibitions, art gallery event listings.

LAWRENCE STREET GALLERY
 Friday, June 25 — "Summer Invitational," a show of sculpture, prints, ceramics, paintings and drawings by more than 40 artists, continues to July 15. Opening reception 6-9 p.m. Friday. Hours are 11 a.m. to 4 p.m. Wednesday-Thursday, 11 a.m. to 9 p.m. Friday, 29 W. Lawrence, Pontiac, 334-8716.

CREATIVE ARTS CENTER
 June 25 - August 19 — "The Prison Experience," a photography exhibition with accompanying personal statements answers the question, "What do you want people to know about prisons?" It is a composite work by photographer Morris Cambl and comments by correctional officers, prison employees, prisoners and their families. Gallery located at 47 Williams Street, Pontiac. Gallery hours: 10 a.m. to 4 p.m. Tuesday-Saturday. Open to the public from 5-7 p.m. Friday, June 25.

SCULPTURE SHOW
 Sunday, June 27 — An outdoor sculpture show by Jerry Sobie will take place 11 a.m. to 5 p.m. Sunday at his studio, 3819 La Playa in Orchard Lake. Take Orchard Lake Road to Pontiac Trail, go west one-half mile to Old Orchard Trail (light), turn right to La Playa, about two miles on the left. Call 683-4364.

WOODS GALLERY
 Monday, June 28 — A mixed media exhibit by participants of JARC programs continues to July 20. Reception to meet the artists 7:30-9:30 p.m. Monday. JARC is an association for residential care for people with developmental disabilities. The show, the fourth collaboration between the gallery and JARC, is financed in part with a grant from Very Special Arts/Michigan. The gallery is in the lower level of the Huntington Woods Library, 29416 Scotin. Call 643-9720.

URBAN PARK
 Friday, June 25 — The works of six artists will be shown through July 26. Opening reception 6-9 p.m. Friday, featuring a live performance by Hotfoot Puddin' Pie. Exhibits are "Kanto a La Mujer" by Nora Mendoza, paintings that celebrate women; 12 paintings by Peruko Bogdanic, larger tempera works that speak of perspective in

art and smaller canvases with free-floating shapes; paintings by Cathie Tenhooop of Artists Cooperative; The; acrylics and mixed media canvases by Ivan Rokhina; wildly fantastic canvases by Jason Yates; and paintings and Japanese tea sets and accessories by Billy O'Bryan. Also, drawings, paintings and ceramic and glass sculptures by contemporary Romanian and Romanian-American artists of the International Artists Association are featured. Hours are 10 a.m. to 9 p.m. Monday-Thursday, 10 a.m. to 11 p.m. Friday-Saturday, noon to 7 p.m. Sunday, 508 Monroe, third floor, Detroit, 963-6446.

JUDY FRANKEL & ASSOCIATES
 Through June 24 — A gallery showing continues of antiques and decorative arts, featuring beaded purses and cushions, along with folk art, Victoriana, quilts, hooked rugs, framed pieces and twig accent pieces. Hours are 10 a.m. to 4 p.m. or by appointment, 2900 W. Maple, Suite 111, at the northeast corner of Maple and Coolidge in Troy, 649-4599.

ANN ARBOR ARTIST'S CO-OP
 Through June 24 — "Minds Eye: A Collection of Eclectic Goodies" encompasses mixed media work in 3-D including sculpture, jewelry, carving, fiber arts, pottery, drums and rattles and functional art. The show is in the lower level of Harris Hall at 617 E. Huron in Ann Arbor. Call 668-8769 for more information.

DETROIT ARTISTS MARKET
 Through June 25 — "Willing Diabolist" features the work of Michigan artists chosen "for their ability to transform sticks, stones, steel, tar, oil paint and human hair into works of art." Hours are 11 a.m. to 6 p.m. Tuesday-Saturday, 11 a.m. to 9 p.m. Friday, 300 River Place, Suite 1650, Detroit, 393-1770.

THE GUILD GALLERY
 To June 25 — The Year of the American Craft is the focus of an exhibit of dolls. Michigan Guild members Nancy Hauser, Carole Klutcho and Des Segula display a diverse selection of their work ranging from traditional to contemporary, one-of-a-kind art dolls, some especially made for this show. Hours are 9 a.m. to 5

p.m. Monday-Friday in the offices of the Michigan Guild of Artists and Artisans, 118 N. Fourth, Ann Arbor, 662-3382.

SANDRA COLLINS
 To June 26 — "For the Table: From Candlesticks to Swizzle Sticks," a group show by gallery artists, continues. The gallery is at 470 N. Woodward in Birmingham. Call 642-4795.

O.K. HARRIS/DAVID KLEIN GALLERY
 Through June 26 — "Recent Photographs" by Jack Savage and "Dirty Pictures" by Jeff Bourgeois continue. Hours are 11 a.m. to 6 p.m. Tuesday-Saturday, 430 N. Woodward, Birmingham, 433-3700.

LEMBERG GALLERY
 Through June 26 — New works in charcoal and pastel by Michelle Zalopany are exhibited. Hours are 11 a.m. to 6:30 p.m. Tuesday-Friday, 11 a.m. to 5 p.m. Saturday and by appointment, 538 N. Woodward, Birmingham, 642-6623.

HILL GALLERY
 To June 26 — An exhibit of sculpture by Carol Hepper continues. Hours are 11 a.m. to 6:30 p.m. Tuesday-Saturday or by appointment, 163 Townsend, Birmingham, 640-9288.

SYBARIS GALLERY
 To June 26 — "Visions Reflected" features mirrors from functional to sculptural, from small grand, by 12 well-known furniture makers, sculptors, metalmiths, ceramists and textile artists. Hours are 11 a.m. to 5 p.m. Tuesday-Saturday, 301 W. Fourth, Royal Oak, 544-3888.

PEWABIC POTTERY
 Through June 26 — Continuing "On the Surface" by Ann Agee, George Bowes, Bruce Ghoslon, George Johnson, Greg Pitta, Faraday Sredl and Andy Nasisse in the first floor gallery, and works by Kris Nelson in the Stratton Gallery. Hours are 10 a.m. to 6 p.m. Monday-Saturday, 10125 E. Jefferson, Detroit, 822-0954. Guided tours available.

MICHIGAN GALLERY
 Through June 26 — "Small Things" features dozens of smaller sculptural pieces and fine

art jewelry by more than 30 metropolitan Detroit artists. Hours are 11 a.m. to 6 p.m. Thursday-Saturday, 2661 Michigan Ave., Detroit, 626-8988.

POSA GALLERY
 Through June 27 — "Scenes of Rochester," a special exhibit of the Pontiac Oakland Society of Artists, continues. All of the works are based on either actual Rochester locations or the artist interpretations of them. The gallery is in the Great Oaks Mall at Walton and Livonia in Rochester. Call 651-1679.

THE ARTISTS' GALLERY
 Through June 27 — "Art As You Like It" features abstract watercolors and acrylics by Jane Mackinnon, abstract still lifes in watercolor by Billie Thompson and antique furniture handpainted by designer Cynthia Trevino Bodena. Also, "Insects-Inside," a show of bug jewelry and small sculpture by artists from all over the area and the country, continues this month. Hours are 10 a.m. to 6 p.m. Monday-Wednesday and Saturday, 10 a.m. to 8 p.m. Thursday-Friday, noon to 4 p.m. Sunday, 30905 Orchard Lake Road, between 13 Mile and 14 Mile in Farmington Hills, 855-8832.

MATRIX GALLERY
 To June 27 — "The Fourth Commandment . . . thy mother and thy father . . ." a presentation of mixed media sculpture by Illinois artist Cynthia Morgan, continues. Hours are 6-9 p.m. Thursday-Friday, 10 a.m. to 5 p.m. Saturday, 1-5 p.m. Sunday or by appointment, 212 Miller, 1/4 blocks west of Main in Ann Arbor, 663-7775.

THE YAW GALLERY
 To June 30 — New works by Jean Stark are exhibited at 550 N. Woodward in Birmingham. Call 647-5470.

OBJECTS OF ART
 Through June 30 — Sculptures by Thomas Yano are presented. Yano's distinctive works, comprised primarily of metal and wood, are designed to adorn contemporary outdoor landscapes. The gallery is at 6243 Orchard Lake Road, just north of 15 Mile in West Bloomfield. Call 539-3332.

PRIVATE COLLECTION GALLERY
 Through June 30 — "A Gathering of Women," an exhibit by watercolor artist Jerry Fentor showing women at their most joyous times, continues. Also featured: glass sculpture by Leon Applebaum. Hours are 11 a.m. to 5 p.m. Monday-Saturday, 11 a.m. to 3 p.m. Sunday, 6736A Orchard Lake Road, West Bloomfield, 737-4050.

ARIANA GALLERY
 Through June 30 — The gallery presents its second annual Garden Show. A special selection of birdhouses is being decorated by artists. Proceeds from the sale of these birdhouses will be donated to the Birmingham Bloomfield Art Association Building Fund. Also, a special showing of work from the Fred Myers Studio of Denver is featured. Hours are 10 a.m. to 6 p.m. Monday-Saturday, 388 E. Maple, Birmingham, 647-6405.

ROCHESTER HILLS CITY HALL
 During June — Kathleen English displays her mixed media drawings in an exhibit sponsored by Rochester's Paint Creek Center for the Arts as part of its Art in Public Places program. Hours are 8 a.m. to 5 p.m. Monday-Friday, 1000 Rochester Hills Drive off Avon Road, call the PCCA at 651-4110 for more information.

COUNTY GALLERIA
 Through June 30 — The 47th annual Michigan Water Color Society Traveling Exhibition continues in the Executive Office Building at 1200 N. Telegraph in Pontiac. Call 858-0416.

ELIZABETH STONE GALLERY
 Through June 30 — A collection of original art by Gennady Spirin, one of the best known and most distinguished Russian illustrators of children's books, is showcased. Hours are 11 a.m. to 5:30 p.m. Tuesday-Saturday, 580 N. Woodward, Birmingham, 647-7040.

ETON GALLERY
 Through June — The gallery's spring exhibition showcases photography with a botanical theme by Giulio Pallone, Laurie Hirsch Tennent and Debra Heimerlinger. The gallery is at 151 N. Eton, north of Maple in Birmingham. Call 649-4951.

HOMES OF QUALITY ARE OUR SPECIALTY!

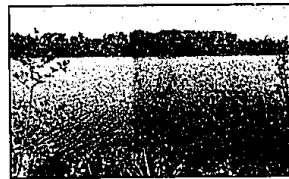


NEAR CRANBROOK
 Beautiful lawn and pool. Hardwood floors in formal dining room, large kitchen and living room with lovely imported fireplace, delightful master suite, family room plus Florida room. \$659,000 B-12395



BUILDER'S OWN HOME
 The finest of everything in this magnificent customized contemporary. Situated on the most beautiful lot on Wabcock Lake. Ultimate open floor plan with soaring 10 foot ceilings throughout. Master suite with fireplace, his/hers walk-ins and his/hers showers. Custom built jacuzzi, steam sauna. Fine audio system throughout. Bloomfield Hills schools. \$1,750,000 B-10482

Spectacular Lakefront Contemporary



WOODED SETTING
 Lots of trees and privacy for this great Cranbrook Manor townhouse in the City of Bloomfield Hills. Large and roomy with 1,878 sq. ft. including library, newer kitchen. \$179,500 B-12458



CITY OF BLOOMFIELD HILLS
 Gracious country estate with beautiful grounds of over 3 acres accentuated with flower gardens, mature trees, brick walks and pathways. Four car garage, 5-7 bedrooms, 5 fireplaces, 4 1/2 baths. \$2,475,000 B-09440



BLOOMFIELD HILLS SCHOOLS
 Custom quality walk-out ranch with great open floor plan. Great room, white Formica kitchen, large finished walk-out level. Beautifully landscaped. Family room plus library. \$379,900 B-12831



LAKE PRIVILEGES
 Custom built on a private treed 3/4 acre lot. Wet bar. Pella windows, zoned heating, central vacuum, wet bar, 2 master suites. Beautiful deck and landscaping. \$225,000 B-12143

Hannett, Inc. Realtors

646-6200 bloomfield hills, mi 48301

Estates Club

Check for the world's leading real estate firm



Open houses through Friday 6:30-8:30 p.m., Saturday 9-6 p.m. and Sunday 10-6 p.m.