



MARKET

Exclusively from Real Estate One.

from **Real Estate One.**

Michigan's Largest Real Estate Company



FARMINGTON HILLS
SUPER RANCH HOME! 3 or 4 bedroom home with lovely great room plus family room with fireplace. 24x30 porch with beamed cathedral ceiling & entertainer's dream.
 \$157,900 (KIN) 851-1900



WHITE LAKE
CONTEMPORARY RANCH! Dramatic & stunning. Great room with vaulted ceiling & skylight, neutral decor, cut-to-see location & deck, sprinklers, central air. Full basement; 3-car garage accommodates boat.
 \$152,900 (AND) 851-1900



WEST BLOOMFIELD
GREAT LOCATION! JUST REDUCED! 4 bedroom, 2 1/2 bath unique pillared colonial on cul-de-sac. Lake privileges on Union Lake. Fireplace in family room. Home Warranty + more.
 \$149,900 (SUN) 681-5700



SOUTHFIELD
5 BEDROOM TRI-LEVEL. Spacious 4 or 5 bedroom with a study. Contemporary open floor plan, inground pool, fenced, lovely landscape, backyard, Jennair/microwave, dishwasher, all new.
 \$145,900 (ZIBHAN) 559-2300



FARMINGTON HILLS
GREAT LOCATION. 3 or 4 bedrooms, 3 full baths, family room and more. Immediate occupancy. Close to schools, shopping and expressways.
 \$139,900 (RED) 477-1111



TROY
EXCEPTIONAL HOME IN SPECTACULAR SUB! Neutral decor highlights this open floor plan! Kitchen with oak cabinets & hardwood floor. Wonderful deck, large lot & much more!
 \$135,900 (SOSHR) 952-8590



FARMINGTON HILLS
CLASSY CONDO! Townhouse on premium lot with 14x15 deck and view of woods. Open floor plan, spacious kitchen, great room with fireplace, 2 large bedrooms, 2 1/2 baths, first floor laundry, basement.
 \$133,900 (MIS) 477-1111



FARMINGTON HILLS
FARMINGTON HILLS. Free standing condo backing to wooded nature area. 2-car attached garage, full basement, cathedral ceilings in great room with marble accented fireplace.
 \$132,900 (ORC) 851-1900



SOUTHFIELD
HUGE FAMILY ROOM WITH FIREPLACE. Lovely 4 bedroom colonial located on cul-de-sac. Spacious home. All window treatments remain - also light fixtures & ceiling fans. Finished basement. Beautiful carpet.
 \$129,900 (ZIBCON) 559-2300



ROYAL OAK
SPRAWLING ROYAL OAK RANCH with over 1700 sq. ft., 3 bedrooms, and huge family room. 100 ft. lot in gorgeous sub, and manicured yard with patio.
 \$120,900 (7340B) 548-9100



WATERFORD
VIEW OF (2) LAKES. Beach access on Sylvan Lake. This home offers 1900 sq. ft. of comfortable lakes area living. Many updates including kitchen, marble fireplace, docking and much more.
 \$129,850 (WOD) 681-5700



BLOOMFIELD
BEST PRICE IN BLOOMFIELD'S "SOUTH HILLS". 1st floor bedroom and bath, plus 2 bedrooms and bath upstairs. Living room with fireplace, 2 tier deck, garage with utility sink. Kitchen appliances included.
 \$119,500 (B1206Z) 646-1600



WHITE LAKE
NICE AREA! NICE PRICE! Quality brick ranch with 3 bedrooms, 1 1/2 baths on lovely oversized lot in back of popular sub.
 \$111,900 (B150D) 363-8307



TROY
TWO FAMILY INCOME - With separate basements and separate utilities. Two bedrooms, one bath! Fireplace in living room in lower unit!
 \$110,000 (B13154) 644-4700



TROY
SHARP TROY CONDO. 3 bedroom - 1 on 1st floor, 2 baths, 1 car attached garage. Fresh paint, neutral decor, move-in condition. All appliances included. Close to clubhouse & pool.
 \$103,000 (B11075) 648-1600



TROY
TROY SCHOOLS! All brick Ranch with 3 bedrooms, 1 1/2 baths, spacious kitchen, finished basement, extra deep lot, 2 1/2 car garage & much more.
 \$94,900 (32 TRO) 952-5590



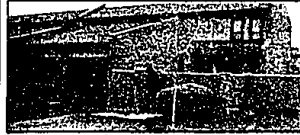
CLAWSON
SHOWN WITH PRIDE! Tastefully decorated brick Ranch in Clawson offers 3 bedroom, 2 baths, garage, appliances. Don't wait!
 \$94,500 (7200B) 548-9100



BLOOMFIELD HILLS
WONDERFUL 3 BEDROOM, 2 1/2 bath home with nature views from every window. Just under 2 acres. Lovely new kitchen, hardwood floors, wet plaster. Superiorly maintained with many updates.
 \$232,500 (B11551) 648-1600



SOUTHFIELD
READY TO MOVE INTO! This 3 bedroom ranch with air conditioning & full basement is ready for you. Close to shopping, schools and expressways.
 \$89,000 (WIN) 851-1900



SOUTHFIELD
2 BEDROOM BRICK TOWNHOUSE, shows well, has much to offer, private entrance with private court, pots allowed.
 \$79,500 (250CHA) 559-2300



FARMINGTON
EMPTY NESTER! Charming co-co near downtown. 2 bedrooms, 2 baths, cathedral ceiling, new windows, carpet and appliances. Florida room, garage. A must see!
 \$74,900 (KIN) 477-1111



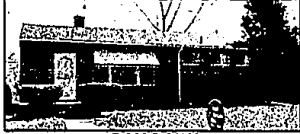
LIVONIA
GREAT LOCATION! 3 bedroom ranch with attached garage on large lot. Immediate occupancy! Close to everything!
 \$71,900 (20339 H) 363-8307



TROY
CHARMING TROY RANCH! Offers formal dining room, updated kitchen with built in dishwasher, new carpet, covered ceilings, 3 bedrooms. This house is an incredible value!
 \$64,900 (10 BIR) 952-5590



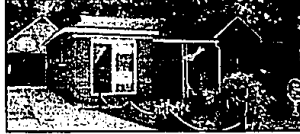
SOUTHFIELD
ROOM TO GROW! Unique 3-4 bedroom home on a half-acre lot features a huge family room, formal dining, and attached 2 car garage.
 \$62,000 (204WES) 559-2300



OAK PARK
THE BEST IN OAK PARK! Fantastic 3 bedroom brick home perfectly maintained and completely remodeled. Newer roof, electrical, and plumbing system. Full finished basement. 1 year home warranty.
 \$55,000 (823WH) 559-2300



SOUTHFIELD
GREAT OPPORTUNITY - Why rent when you can buy? Starter home for young couple. Some TLC needed. Acre + lot, fireplace in living room, one car attached garage.
 \$54,000 (B10206) 644-4700



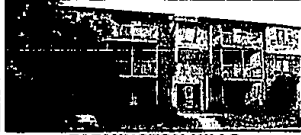
SOUTHFIELD
MUST SELL! A place in the country-like setting on 1/2 acre land. 3 bedroom, living room with natural fireplace, country kitchen, heated garage.
 \$49,900 (210WES) 559-2300



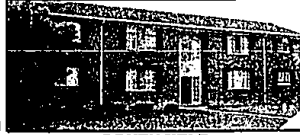
SOUTHFIELD
GROWING FAMILY HOME. Great area to raise a family, large backyard for privacy and safety along with updated kitchen, 1st floor laundry, formal dining area, living room with fireplace.
 \$49,900 (212BER) 559-2300



BLOOMFIELD
WHY RENT? Extremely sharp and affordable condo in Bloomfield Hills. Near shopping center, banks, restaurants. Great for first time buyer!
 \$47,500 (B11333) 644-4700



FARMINGTON HILLS
GORGEOUS VIEW. Excellent buy on 2nd floor unit with a view of the courtyard. Peaceful and serene, updated with neutral decor. All appliances included. Immediate occupancy, must be sold, asking less than what they paid.
 \$46,900 (TWE) 477-1111



SOUTHFIELD
GROUND FLOOR BEAUTY! with fabulous view of courtyard, 2 bedroom, excellent condition condo. Pool & clubhouse among private surroundings. In-building storage. Great location and great price!
 \$39,500 (SH) 851-1900



Our 64th Year

REALTORS

"Real Estate One Continued on Front of this Section"

©Real Estate One Inc. 1993.

Administrative	851-2600	Farmington	477-1111	Southfield-Lathrup	559-2300
Allen Park	389-1250	Farmington Hills	851-1900	St Clair Shores	296-0010
Ann Arbor	995-1616	Livonia-Redford	261-0700	Sterling Hgts.	979-5860
Birmingham	646-1600	Millford	684-1065	Taylor	292-8550
Bloomfield Hills	644-4700	Northville/Novi	348-6430	Traverse City (616)	947-9800
Brighton	227-5005	Lakes Area	363-8307	Traverse City-Commercial	(616) 946-4040
Dearborn	274-8911	Plymouth/Canton	455-7000	Trenton	675-6500
Dearborn Hgts.	565-3200	Rochester	652-6500	Troy	952-5590
Detroit	273-0800	Royal Oak	548-9100		

Waterford/Clarkston	623-7500
West Bloomfield	681-5700
Westland/Garden City	326-2000
Relocation Information	851-2600
Other Michigan Locations	1-800-521-1919
Training Center	356-7111

Relocating? For housing information on your destination city, call our relocation services center 1-800-521-0508

For information on a career in real estate call (313) 356-7111

