

EXHIBITIONS

LOOKING AHEAD

What to watch for in Creative Living next week:

■ A visit to the exhibit by premier glass artist Dale Chihuly at the Detroit Institute of Arts.
 ■ Exhibitions, art gallery event listings.

sculptures by contemporary Romanian and Romanian-American artists of the International Artists Association are featured. Hours are 10 a.m. to 9 p.m. Monday-Saturday, 11 a.m. to 6 p.m. Sunday, 2610 Greenfield, Oak Park, 963-1190.

■ TROY PUBLIC LIBRARY

Through July 29 — Mary Tomas is Artist of the Month, exhibiting pastel and watercolor portraits and still life drawings and paintings. Tomas works from live models and concentrates on the emotional content of her subjects, she said. She uses many brilliant colors in her work. Tomas has a bachelor of fine art degree from Wayne State University and completed further studies at the Center for Creative Studies and the Birmingham Bloomfield Art Association. She has won first place in the Palette and Brush Club Show and awards in the Michigan State Fair Fine Arts Show, and spent 10 years as an art director in advertising. Hours are 10 a.m. to 9 p.m. Monday-Thursday, 10 a.m. to 6 p.m. Friday-Saturday, 510 W. Big Beaver Road, just east of I-75 in the Civic Center complex, 524-3545.

■ WAYNE STATE UNIVERSITY

Through July 30 — The Michigan Water Color Society's 47th annual traveling exhibition continues in the Community Arts Gallery. Several present and former art and art history faculty with long and creative professional relationships to the society have added their art to the 36-piece exhibit. Among the artists whose works are featured in the display are Bernice Marx of Bingham Farms, Darcy Scott of Birmingham, Ede Joppich of Farmington Hills, Donna Vogelheim of Farmington, Ann Lovell of Orchard Lake, Carole Hadley of Rochester, Donald Mendelson of Southfield, Sonia Molnar of Troy and Prudence Bernstein of West Bloomfield. Hours are 10 a.m. to 5 p.m. Tuesday-Friday. For more information, call gallery director John Slick at 677-2423.

■ GREAT OAKS MALL

Through Aug. 7 — The Pontiac Oakland Society of Artists group show, featuring "The Scenes of Rochester," continues during mall hours at Walton and Livernois in Rochester. Call 651-1679 for information.

■ SUSANNE HILBERRY GALLERY

Through Aug. 21 — An exhibit of sculpture by some of today's most exciting and important contemporary artists continues, attempting to define the diversity in expression and materials explored in sculpture today. Artists featured are John Chamberlain, Roni Horn, Donald Judd, Claes Oldenburg, Judy Pfaff, Joel Shapiro and Keith Sonnier. Hours are 11 a.m. to 6 p.m. Tuesday-Saturday, 555 S. Woodward, Birmingham, 642-8250. Closed Aug. 24 through Sept. 6.

■ HABATAT/SHAW GALLERY

Through Aug. 30 — Vessels and sculpture by nationally and internationally recognized ceramists and sculptors are featured in "H/S Group," a summer group exhibition. All of the artists are represented by the gallery. They include John Glick of Farmington Hills; Thom Baker of Flushing, Mich.; Michael Lucero, Arnold Zimmerman and Lee Stollar of New York; Karen Karnes of Vermont; and George Timock of Kansas. Summer hours are 10 a.m. to 5 p.m. Wednesday-Saturday, 32255 Northwestern Highway, Farmington Hills, 851-8767.

■ CARY GALLERY

Through August — Selected works by gallery artists are exhibited. Hours are 11 a.m. to 5 p.m. Tuesday-Saturday, 226 Walnut Blvd., Rochester, 651-3656.

■ BACKDOOR GALLERY

Through August — "The gallery's opening show, 'A Celebration of Dreams,' continues. The gallery is devoted to the non-traditional

fiber art doll. It is showing work by 14 artists, including Grace Forest, Lenore Davis, Bonnie Penet, Kath Lathers and Carol Stygles. New sculptural dolls by Marian Draugalis are also featured. Hours are 11 a.m. to 3 p.m. Thursday-Friday, 10 a.m. to 4 p.m. Saturday and by appointment, 37220 Eight Mile, Farmington, 474-8306.

■ ELIZABETH STONE GALLERY

Through Aug. 31 — "The Magical Art of the Picture Book" continues, including original art and new, limited edition lithographs by Lynn Munsinger, Marc Brown, Wendell Minor, Don Wood, Robin Spowart, Thacher Hurd, Rosemary Wells, David MacPhail and many other children's book illustrators. Hours are 11 a.m. to 5:30 p.m. Tuesday-Saturday, 580 N. Woodward, Birmingham, 647-7040.

■ CIVIC CENTER GALLERY

To July 30 — Photographs by veteran freelance artist Beverly Beeton are exhibited in "Scenes From a Life," her debut showing. The exhibit is the product of years of extensive travel, depicting all the breathtaking scenery Beeton has encountered, from the Atlantic shores of America to the sloping greens of the British Isles. Hours are 9 a.m. to 9 p.m. Monday-Friday, 9 a.m. to 5 p.m. Saturday, in the Southfield Parks and Recreation Building, 26000 Evergreen, Southfield, 354-4717.

■ HABATAT GALLERIES

Through July and August — Seattle artist David Hutchinson's extraordinary complex cast and laminated glass sculpture is exhibited. His colorful, hard-edged images juxtaposed to carved and faceted surfaces create exciting illusions throughout the pieces. The exaggerated scaled vessels of Stephen Powell are exhibited concurrently. Powell's sculpture incorporates 3,000 colorful elements on the surface of his elaborate, long-stemmed bottles, creating a feeling of stained glass cathedrals. Also, an ongoing show of works by glass master Dale Chihuly, in conjunction with his Detroit Institute of Arts exhibit. Summer hours (July and August only) are 10 a.m. to 6 p.m. Wednesday-Saturday, 32255 Northwestern Highway, Farmington Hills, 851-9090.

■ CONNOISSEUR GALLERIES
 Through August — The paintings of Michigan artist Gary Geese are exhibited. The vibrant works on canvas and paper create mood and atmosphere in contemporary images. Hours are 10 a.m. to 5 p.m. Monday-Saturday, 1853 E. Maple, one block west of John R in Troy, 528-8410.

■ ARIANA GALLERY

For the summer, the gallery features a special showing of work from the Fred Myers Studio. Outdoor sculptures, mirrors and furniture are highlighted. Hours are 10 a.m. to 6 p.m. Monday-Saturday, 386 E. Maple, Birmingham, 647-6405.

■ SOUTHWEST CIVIC CENTER

Through Oct. 15 — Michigan Outdoor Sculpture IV exhibits sculpture by 20 Michigan artists at 25000 Evergreen between 10 Mile and 11 Mile.

■ COUNTY GALLERY

To July 29 — A Joint Oriental brush painting show by the famous Liang's Trio Artists and the Midwest Oriental Art Club continues, coordinated by Yu-Ping Yang and Jack Liang. The exhibit is part of an established partnership with the Birmingham Bloomfield Art Association to enhance the cultural exchange and public awareness of Oriental arts and philosophy. Hours are 8:30 a.m. to 5 p.m. Monday-Friday in the Executive Office Building at 1200 N. Telegraph in Pontiac, 858-0415.

■ SANDRA COLLINS

Through July 31 — In celebration of the Year of American Craft, the gallery presents "Made in the USA: Work by Gallery Artists." The gallery is at 470 N. Woodward in Birmingham. Call 642-4795.

Bonsai art shown

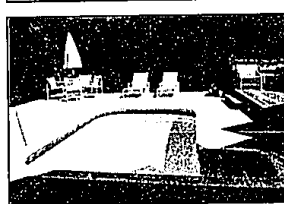
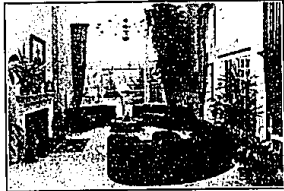
The Four Seasons Bonsai Club of Michigan will have a general meeting 2-4:30 p.m. Sunday, July 25, in the second floor Community Room at Summit Place Mall, Elizabeth Lake Road and Telegraph in Pontiac.

Visiting artist Jerry Meislik will lecture on and demonstrate secondary styling and fine tuning. Light refreshments will be served. The Community Room is near Ruby Tuesday's restaurant. For more information, call secretary Marie Clayton at 667-0185 or Rosalind Evanoff at 354-6119.

HOMES OF QUALITY ARE OUR SPECIALTY!

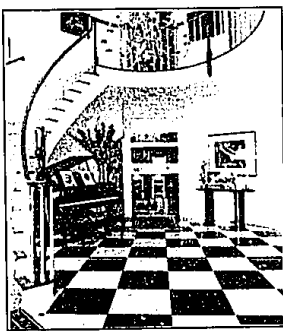


GREAT FAMILY NEIGHBORHOOD
 Owner transfer forces the sale of this great Troy home. Professionally landscaped with private cul-de-sac setting. Newer central air \$137,900 B-13654



Magnificent French Chateau built in 1886 with beautifully landscaped grounds. Elevated setting. Spectacular foyer with 306 degree winding staircase, sparkling brass chandelier and marble floor. Two-story great room with dramatic two-story palladian window. Exercise pool \$895,000 B-13251

Beautiful Home in Chestnut Run



FINE FAMILY HOME
 Spacious 5 bedroom home on over an acre. Two fireplaces, sun room, breakfast room with bay, finished rec room. Large bedrooms. Birmingham schools. \$365,000 B-12989



PINE KNOLLS
 Elegant condo in premium location. Private back yard. Library, plantation shutters, bright kitchen, master with vaulted ceiling, great room. \$169,900 B-06629



LAKE PRIVILEGES
 Picturesque setting plus lake privileges. Quality features in hardwood floors, 2 fireplaces, lots of recessed lighting, updated kitchen and more. \$245,000 B-13577



MOVE-IN CONDITION
 Beautifully maintained in a great location! Lots of recent updates including roof, sprinkler system, landscaping, large deck. Two baths first floor. \$174,900 B-13720



BETTER THAN NEW
 Beautiful Moon Lake condo in perfect condition! Great all white kitchen and breakfast area with oak floor. Spectacular walk-out level. \$145,500. B-13829



Hannett, Inc. Realtors
 2511 w. maple at cranbrook 646-6200 bloomfield hills, mi 48301
 open monday through friday 8:30-8:30 p.m., saturday 9-6 p.m. and sunday 10-6 p.m.

