

HOMES OF QUALITY ARE OUR SPECIALTY!



ORCHARD LAKE

Stately elevated setting with premium 183 ft. frontage. Open in design for ease of living and entertaining. Hardwood floors, island kitchen, walls of windows lakeside. \$1,195,000 B-12091



LAKE ANGELUS

Best kept lakefront secret! Beautiful Nantucket Cape Cod on sandy shores of Lake Angelus. Just minutes from downtown Birmingham. Spectacular elevated setting. Bathhouse. \$789,000 B-13917



LOWER LONG LAKE FRONTAGE

A retreat... the perfect place for professionals to recharge their batteries. Magnificent lake views with ideal southern exposure. Designed for good living and entertaining. \$895,000 B-11419



NATURE LOVER'S PARADISE

Magnificent ravine setting with pond and stream backing to nature preserve of 10 acres. Five level living with lots of wall space for the collector of fine art. Open floor plan perfect for entertaining. \$687,000 B-10478



DEER LAKE

All sports lake frontage plus spectacular elevated setting with beautiful sunset views. Nice sandy beach too. Four-Five bedrooms, 5 baths, two-story great room. Northern Michigan atmosphere. \$545,000 B-05813



CITY OF BLOOMFIELD HILLS

Lots of acreage in a prestigious area! Park-like 4.3 acres with many trees, stream and pond. Open in design with updated kitchen, main level bedrooms with baths, master with whirlpool, 2 fireplaces. \$895,000 B-00845



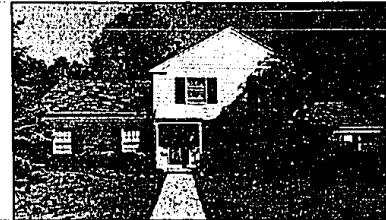
GREAT AREA

Desirable Hickory Heights area... great for families! Beautiful private elevated setting with sports court to rear. Freshly painted. Neutral decor. Lots of room for versatile living. \$269,500 B-13810



BREATHTAKING

Better than new! Totally updated free standing condo on premium site. White Farmica kitchen, custom woodwork throughout. Great room, library, 3 bedrooms and more. \$224,900 B-14008



LOCATION LOCATION

Premium Bloomfield Village plus beautifully landscaped setting! Just decorated with classic style throughout. Superior updating. All appliances stay. Could have first floor master suite. \$479,500 B-13968



LAKEFRONT LIVING

Fabulous contemporary rebuilt in 1991. Designer's home with elegant decor. Marble tile, skylights, recessed lighting, lots of windows and doorways for great lake views. Decking plus hot tub. \$369,900 B-13263



BLOOMFIELD HILLS SCHOOLS

Custom quality walk-out ranch on a quiet cul-de-sac. Great open floor plan with great room, white Formica kitchen, large finished walk-out level. Beautifully landscaped. Lots of space! \$379,900 B-12831



PREMIUM AREA

Wonderful contemporary situated on nearly two acres of wooded grounds. Unusual open floor plan perfect for the professional couple. Large expanse of windows and walls for art. Ask about lease. \$498,000 B-08583



MOVE-IN CONDITION

Beautifully maintained in a great location! Lots of recent updates including roof, sprinkler system, landscaping, large deck. Two full baths first floor. Large great room \$174,900 B-13720



THE HEATHERS

Popular detached Newcastle model. First floor master, custom window treatments, mirrored doors, cathedral ceiling, Palladian windows, finished lower level. \$325,000 B-12142



GREAT FAMILY NEIGHBORHOOD

Contemporary with studio ceilings in master and family room, recessed lights, skylights, curved walls in entry and stairs. Master bath with steam shower, skylight. Finished rec room. \$195,000 B-10250



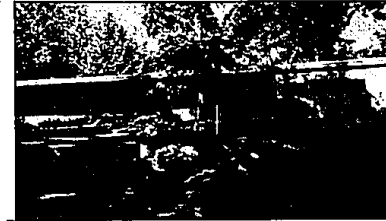
OPEN SUNDAY 1-5

Beautiful Moon Lake condo seldom open... don't miss this opportunity to see! Better than new with so many lovely quality features! Walk-out level. 3000 MOON LAKE (S of Long Lake & E of Orchard Lake) \$145,500 B-13829



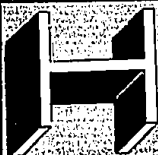
LATHRUP VILLAGE

A lot of house for the money in the middle of Lathrup Village. Fireplace and coveled ceiling in living room, 3-4 bedrooms, 2 baths. Appliances stay! Great starter home. \$105,000 B-13996



A BEAUTY

Prettiest ranch around! Open contemporary in a beautiful tree setting. Two fireplaces. Hardwood floor in foyer, living room, dining room. Dramatic sloped ceilings, white kitchen. \$219,000 B-14021



Hannett, Inc. Realtors

2511 W. Maple at Cranbrook

646-6200

Bloomfield Hills, MI 48301

open Monday through Friday 9:00-6:00 p.m., Saturday 9-6 p.m. and Sunday 10-6 p.m.

Estates Club

Member Since 1987

