

Honesty, Integrity,  
Personal Professional  
Real Estate Services!  
COUNSEL WITH  
CHAMBERLAIN!

SINCE 1948  
**Chamberlain,**  
REALTORS®

HOMEQUITY  
RELOCATION CENTER



**BIRMINGHAM**  
LOCATION - Spacious kitchen, fenced yard & 4 bedrooms are some of the features in this open floor plan Cape Cod. Walking distance to Midvale School.  
\$274,500 (W-498E) 647-6400



**BLOOMFIELD HILLS**  
SPECTACULAR CONTEMPORARY on wooded 2.1 acre lot near Cranbrook Community. His and her offices, indoor spa, media room, fantastic pool.  
\$1,090,000 (B-75E) 851-4400



**BIRMINGHAM**  
EXQUISITE TUDOR exterior with charming interior. 3-4 bedrooms, 2½ baths, family room with fireplace and screened porch overlooking private yard.  
\$299,000 (S-452E) 647-6400



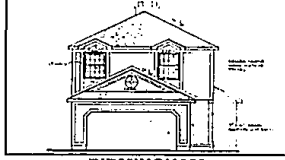
**BIRMINGHAM**  
WALK TO TOWN from this charming "flair upper" with tremendous potential. 3 bedrooms, 1½ baths, sun room and garage. Needs renovation & remodeling.  
\$149,900 (B-144E) 647-6400



**ORCHARD LAKE**  
CUSTOM CONTEMPORARY - Backing to lush woodlands. 4 bedrooms, great room, 2-story dining room, finished lower level. West Bloomfield schools.  
\$319,900 (C-449E) 851-4400



**BLOOMFIELD**  
LOVELY RANCH, completely renovated and is absolutely perfect in everyway. Special features include a great room, 5 bedrooms, library and pool.  
\$319,777 (P-717E) 647-6400



**BIRMINGHAM**  
NEW CONSTRUCTION! 3 bedrooms, 2½ baths, full basement, great room, 2 car attached garage and a fabulous master suite. Very spacious. Call for details.  
\$124,900 (F-148E) 647-6400



**BIRMINGHAM**  
CHARMING UPDATED RANCH located on broad lot. Many newer features include kitchen, furnace, central air, roofing and much more! Security system.  
\$124,500 (P-105E) 647-6400



**WEST BLOOMFIELD**  
HARD TO FIND end unit on cul-de-sac setting. Marble entry, great room with fireplace, spacious kitchen, attached garage, Simsbury Condo.  
\$209,900 (D-601E) 851-4400



**BLOOMFIELD**  
GORGEOUS redone 2 bedroom unit. Open floor plan, lower level walkout completely finished with rec room, kitchen and huge bath with jacuzzi. Adams Woods.  
\$189,500 (G-127E) 647-6400



**BLOOMFIELD**  
COLONIAL WITH LAKE PRIVILEGES on Upper Long Lake. Features 4 bedrooms, 2½ baths, quiet setting and gorgeous acre lot. This home is a must see!  
\$178,000 (M-105E) 647-6400



**TROY**  
EXCEPTIONAL two story home with 1st floor bedroom on 8/10 of an acre on wooded cul-de-sac. 3 car side entry garage with walk-out basement.  
\$239,000 (G-220E) 641-1660



**TROY**  
LOVELY! 3 bedroom brick ranch on large lot with mature trees. Neutral, well maintained, updated kitchen, security system.  
\$157,900 (H-657E) 641-1660



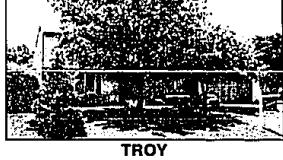
**HUNTINGTON WOODS**  
5 BEDROOM ENGLISH TUDOR with 4½ baths, gourmet kitchen, private stairs to nanny's quarters, Pella windows, den/6th bedroom with balcony.  
\$268,000 (Y-260E) 647-2000



**TROY**  
NEWER TUDOR 4 bedrooms, living room, formal dining room, den, sunny family room, kitchen overlooking wonderful wooded site, full basement.  
\$261,800 (J-111E) 641-1660



**OAKLAND TWP.**  
PEACEFUL SETTING on 1.97 acres, four bedrooms, family room, two fireplaces, country kitchen, walkout basement, dock, 80 ft. on Paint Creek Trail.  
\$169,900 (L-369E) 641-1660



**TROY**  
IMMEDIATE OCCUPANCY! 5 bedrooms, 2½ baths, updated kitchen, great neighborhood, well maintained, 2 year old furnace, now Troy High.  
\$139,900 (L-359E) 641-1660



**TROY**  
FABULOUS PARK-LIKE SETTING near end of dead-end street. 3 bedrooms, 2½ baths, updated kitchen cabinets, new windows, and freshly painted.  
\$144,500 (H-645E) 641-1660



**WEST BLOOMFIELD**  
PRESTIGIOUS BOURGEOIS ESTATES: Contemporary Quad on beautiful one acre setting. 4 bedrooms, spacious updated kitchen, multi-level deck.  
\$179,900 (S-577E) 851-4400



**WEST BLOOMFIELD**  
STOP - LOOK, at this ideal property for the hobbyist with a 26x35 heated and air conditioned outbuilding. Updated, 3 bedrooms, 2 baths and family room.  
\$185,777 (V-739E) 647-6400



**BEVERLY HILLS**  
GREAT STARTER HOME or empty nester with 2 bedrooms, fireplace in spacious living room, screened porch, finished basement and fenced yard.  
\$119,000 (B-171E) 647-6400



**COMMERCE**  
WONDERFUL SETTING WITH SPECTACULAR VIEWS! Four 4 bedroom Colonial. Professional decor, living room with fireplace, walk-out lower level.  
\$279,000 (B-354E) 851-4400



**BEVERLY HILLS**  
CHARMING AND DELIGHTFUL COLONIAL in "move-in condition". 3 bedrooms, 1½ baths, family room, rec room and 2 car garage. This one won't last!  
\$169,500 (K-161E) 647-6400



**SYLVAN LAKE**  
BUILDER'S OWN HOME listed below cost with many extras. Two master suites plus 3rd bedroom and bath. Euro style kitchen, cedar deck.  
\$179,825 (A-234E) 851-4400



**SOUTHFIELD**  
LARGE, CUSTOM 5 BEDROOM HOME. Super size family room, wet bar, full wall brick fireplace, marble foyer. Home warranty plan. Boll Road area.  
\$179,900 (B-227E) 851-4400



**FARMINGTON HILLS**  
ATTRACTIVE 4 BEDROOM COLONIAL in family oriented sub. 2½ baths, family room, private backyard, close to schools and expressways.  
\$162,900 (M-299E) 851-4400



**WEST BLOOMFIELD**  
CHARMING 3 BEDROOM RANCH on extra large lot with Walnut Lake privileges and Birmingham schools. Newer stone patio and enjoyed porch. Must see!  
\$159,900 (I-699E) 647-6400



**WEST BLOOMFIELD**  
AFFORDABLE 3 bedroom home with lake privileges on Walnut Lake. Move-in condition, double lot and lots of growth potential. Call today!  
\$109,700 (L-220E) 647-6400

**COUNSEL WITH CHAMBERLAIN!**

ROYAL OAK 547-2000    UTICA 739-1300    WARREN 755-5070    TROY ROCHESTER 641-1660    BIRMINGHAM 647-6400    WEST BLOOMFIELD 851-4400    BLOOMFIELD 540-6777