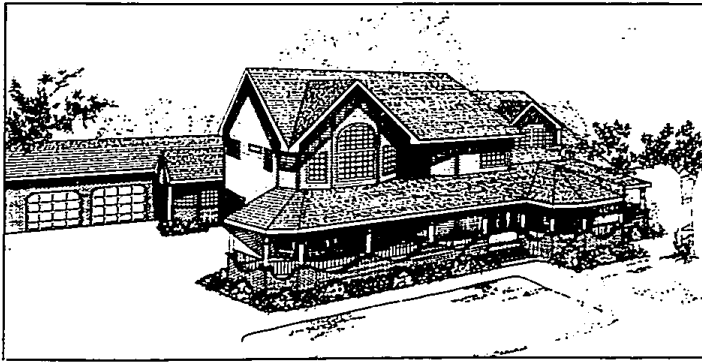


Diana: Part of her charm is her roof lines, wrap-around porch, pillars and brick wall. Another is her spacious and cleverly laid-out interior.



Landmark design has festive feel

Playful roof lines, a wrap-around porch and a uniquely shaped brick wall provide a permanent festive appearance to the Diana, a large country-style home designed by Landmark Designs of Eugene, Or.

A detailed sketch from Diana M. Smith, a U.S. Postal worker from Norfolk, Va., provided the inspiration for this design. Hence its name.

Before you enter, you have to notice the classy round pillars and the conversation bench. OK, now go inside.

Step into the grand foyer with a two-story ceiling. To the left, face-frame display cabinets nestle under a staircase that sweeps up to the second floor.

Elegant columns flank the opening to a sunken living room, two steps down from the entry. Windows in a curved bay fill this large space with light. Over there, across the room, is a corner wood stove with a two-level brick or stone hearth.

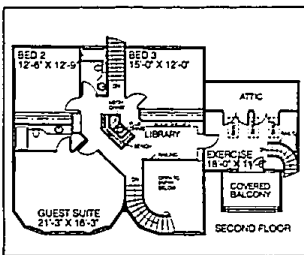
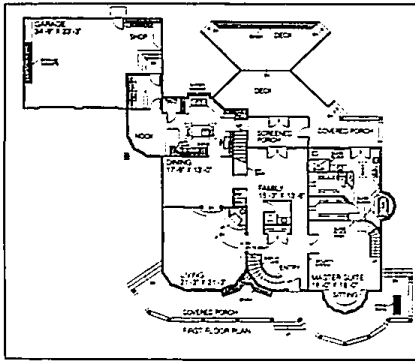
Hungry? Well, you have a couple of choices. Formal dining takes place in the spacious dining room. In the kitchen you can snack at the eating bar or have a coffee in the sunny bayed nook. If you want carry out, there's the

screened porch or the deck. If your job is cooking the meal, you are going to like the skylit kitchen with its walk-in pantry and three-section sink that faces the garden window, and its central work island with an additional veggie sink. There is space for a freezer directly across from the second set of stairs. Utilities and a pull-down ironing board are in a pass-through space which leads to a two-car garage with built-in work bench and storage cabinets.

The third stairway is in the master suite, which features a circular sitting bay and window seat, walk-in closets and a private bathroom that you get to by walking under a neat archway of glass blocks.

All right, let's go upstairs for a minute. There's a library or loft overlooking the entry. There are the two bedrooms, the guest suite and, over there, that's an exercise room with a covered balcony.

Nice, huh? To take a closer look at Diana (Plan No. 403-26), send \$9 to Landmark Designs, P.O. Box 2307-0E48, Eugene, Or. 97402. You have to specify the plan number and name. A collection of plan books is available for \$20.



Floor plan: Diana is a two-story country style design totaling 3,986 square feet, with 771 square feet of garage space.

CLARIFICATION

It was incorrectly stated in the July 29 Building Scene section that demand exceeds supply in the Troy office market. In fact, as the rest of the article indicated, supply far exceeds demand.

GIVE BLOOD, PLEASE.

American Red Cross

GRAND PREVIEW! A NEW LUXURY COMMUNITY OF DETACHED CONDOMINIUMS ON NATURAL WOODED LOTS

The Woods
OF NORTHVILLE

2 & 3 BEDROOM RANCH MODELS

FROM **\$179,900**

MODEL PHONE: 420-2500

Presented by Woods of Northville/Cherestean Partners
Quality construction since 1946

OPEN DAILY & WEEKENDS NOON TO 6:00 P.M. (CLOSED THURS.)

PHASE IV NOW OPEN

Salley Pointe
condominiums

FOUR PHASES HAVE SOLD QUICKLY! DON'T MISS PHASE IV
We can't be beat!

★ 1 Floor, 2 Bedroom, 2 Bath Models ★ FROM **\$69,900**

- 3 Floor Plans
- Private Entrances
- GE Appliances
- Cathedral Ceilings
- Carport

Open Daily 12-5 • Closed Thursday

981-6550
SALES BY CENTURY 21, CASTELLI

Social Security... You Get What You Pay For...

And More. An estimate of your future retirement benefits.

Your year-by-year earnings — make sure they're correct.

An estimate of survivors benefits for your family.

The disability insurance benefits you and your family could be eligible to receive.

You may not have thought about this before, but right now you are earning disability insurance, survivors benefits, a retirement program, and future Medicare coverage. It's all paid for by the Social Security taxes withheld from your paycheck—and matched dollar for dollar by your employer.

And now you can find out just what those taxes are earning for you. It's easy to do and it's free. Just call 1-800-772-1213 and ask for a

Personal Earnings and Benefit Estimate Statement. When you get it, you'll see a complete history of your earnings, the Social Security taxes you've paid, and estimates of what you and your family could receive in Social Security retirement, disability, and survivors benefits.

And if there's an error or omission in your earnings record, Social Security will help you correct it.

Social Security—the best deal in town.

U.S. Department of Health and Human Services
Social Security Administration

ANN ARBOR SCHOOLS
NEW 93 MODELS

Room To Grow. Space To Play.

For generations, families from far and wide have settled in the countryside surrounding Ann Arbor in search of a better life. Today, in Beacon Square, that promise is still available at a remarkably affordable price. With spacious 1/3-acre lots, large rooms for family gatherings, roomy kitchens and family rooms for casual times together...every Beacon Square home is built with dedication to the qualities that make up today's family. Look into Beacon Square built by Irvine Group today and discover what sets us apart.

- Low...low taxes
- Neighborhood sidewalks
- Wide choice of single family homes from **\$139,900**

BEACON SQUARE
Models & Sales Office
Open Daily Noon 11:30 pm
971-0600
Beaumont Walkway