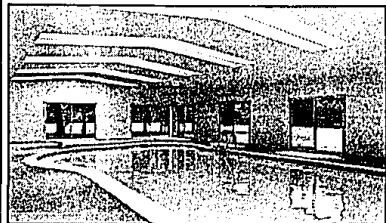
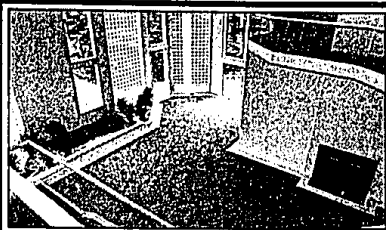
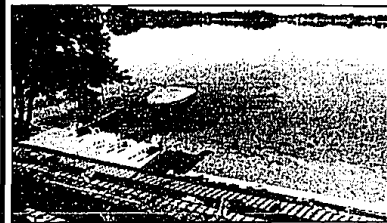


# HOMES OF QUALITY ARE OUR SPECIALTY!



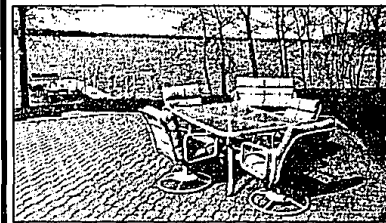
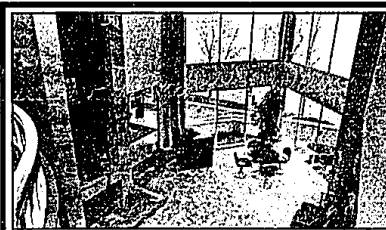
## NEW CONSTRUCTION

Dramatic contemporary on two acre estate with towering pines, private circular driveway and pillared entry. Spacious great room (80x20) features 38' ceiling, custom glass stairway. Six bedrooms, 8 baths, luxurious master suite. Designed and built by Summit Custom Homes. \$1,400,000 B-08988



## LAKE VORHEIS

Spectacular custom built contemporary on beautiful all sports lake. High ceilings and elevated sitting for panoramic views. Main level master suite with sumptuous bath. New kitchen with 7 foot island, large library, family room, rec room. Terraced grounds and decking. \$459,000 B-14192



## ORCHARD LAKE CONTEMPORARY

Spectacular custom home with 138 ft. frontage. Fantastic indoor pool with deck, glass elevator, 2 kitchens, two-story great room and dining room. Unique custom pool table and television screen in large entertainment area. Angled lakeside windows for panoramic views! \$4,500,000 B-11499



## A CHARMING HOME

Many custom features throughout. Great for entertaining and fine living. Close to Cass Lake's Dodge Park. Open main level has charming Victorian appeal. \$129,900 B-14350



## WONDERFUL FAMILY HOME

Beautiful wooded setting for this great 5 bedroom home with Bloomfield Hills schools. Numerous updates. Master bath with jacuzzi, first floor laundry. \$339,000 B-14109



## BLOOMFIELD VILLAGE

New contemporary interior. Beautiful bleached oak kitchen with adjoining skylit garden room to enjoy. Lovely wrought iron enclosed pool area. \$515,000 B-11354



## NOTTINGHAM FOREST

Custom built with lots of charm! Open floor plan for flexible use of area. Updated kitchen, first floor master suite with bath and library. Porch. \$269,000 B-11972



## BETTER THAN NEW

Premium area with doted Wing Lake privileges. Spacious designer kitchen, fabulous master suite, white washed oak flooring. Top of the line condo alternative. B-04254



## A CHARMER

Lorimer built Cape Cod with many updates throughout. 1990 roof, new furnace with air and air cleaner. New oak floor in many areas, 4 bedrooms, fireplace. \$225,000 B-14316



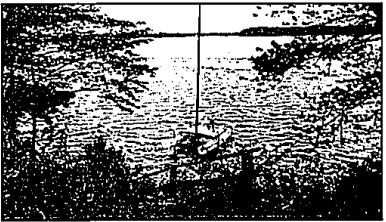
## NORTH WABEEK

End unit, 2-3 bedrooms, 3 baths, skylit ceramic foyer, dining room with hardwood floor, living room with cathedral ceiling and wet bar, finished lower level. \$204,500 B-13453



## BIRMINGHAM TOWNHOUSE

End unit with private yard with deck. Remodeled in 1988. All appliances stay. Easy walk to downtown shopping area. Lots of light! \$124,500 B-14333



## ORCHARD LAKE

Stately elevated setting with premium 183 ft. frontage. Open floor plan for ease of living and entertaining. Hardwood floors, upgraded island kitchen, walls of windows. \$1,195,000 B-12061



## WEST BLOOMFIELD

Great Maple Ridge condo in a beautiful wooded setting. Open floor plan with neutral decor. Separate bedroom suites with private baths. Decking. \$101,900 B-14135



## CLOISTER ON THE LAKE

Renovated townhouse in a popular location. New oak floors in foyer, kitchen, breakfast/dining room, living room and family room. Deck overlooks ravine! \$185,000 B-14186



## LAKE IN THE WOODS

Bright open contemporary features dramatic high ceilings, elegant black and white marble floor, bath with ceramic tile to the ceiling. White kitchen, first floor laundry. \$330,000 B-14294

# Hannett, Inc. Realtors

2511 W. Maple at Cranbrook

**646-6200**

Bloomfield Hills, MI 48301

open Monday through Friday 9:30-6:30 p.m., Saturday 9-6 p.m. and Sunday 10-6 p.m.

★ ★ ★ Estates Club

...club for the world's leading real estate firms

